

## **Severe Weather Advisory for the Caribbean - Hurricane Jose**

Issued on Sunday, 10<sup>th</sup> September 2017 at 04:50 local time.

### **Headline**

Powerful Category 4 Hurricane Jose gradually weakening as it continues to move away from the Northern Leeward Islands. There are no Hurricane watches across the Northern Leeward Islands at this time.

### **Discussion**

Hurricane Jose weakened somewhat in the last 3 hours with maximum sustained winds currently of 115KT (130mph). Jose remains a Category 4 hurricane. Jose was located around 110 miles N of the Northern Leeward Islands at 10/0300UTC (11pm local time). Jose is continuing to move NW at 14 mph taking the core of the storm well away and further from the northern Leeward Islands. Jose is then expected to slow down while moving northwesterly across the Western Atlantic, then turn more northerly in the next 3 days.

Jose remains a powerful storm with latest aircraft data supporting the current intensity and position. Some slight fluctuations in strength are likely, but Jose is expected to remain a Category 4 hurricane as it clears NW across the western Atlantic for much of today. This as sea temperature along its track remains warm enough to support an intense cyclone. The global models remain in very good agreement for this evolution and there is a high degree of confidence in this part of the forecast. The hurricane force winds extend some 35 miles from the "eye", but as this storm is well away from the Northern Leeward Islands this should not be an issue now. However tropical-storm-force winds extend outward up to 140 miles and may affect the northernmost islands in the next 3 to 6 hours.

Jose is expected to turn more north of northwest in the next few days and across the western Atlantic as is steered around the western flank of a mid-level ridge and weaken somewhat. This as shear increases and the storm tracks across cooler sea temperatures. . This as it moves into an environment of drier air and increased wind shear. Towards mid-week, the flow around the trough will result in a northward, then eastward turn around 26N. Thereafter, Jose forward motion should slow down as it is left within an area of weak steering current behind the trough, the do a "slow loop" well to the east of the Bahamas and over the open ocean.

Hurricane force (>74 mph) winds are now not expected across the northernmost islands of the Leeward Islands. However there remains a the risk (10-30%) of tropical storm force (>39mph) winds affecting the Barbuda to the British Virgin Islands for the next 3-6 hours as Jose pulls away northwest.

Although not too significant in themselves any strong winds and showery rain may hamper recovery efforts, and further damage infrastructure already weakened by Irma.

Latest information of track of Jose can be found here at [http://www.nhc.noaa.gov/graphics\\_at2.shtml?cone#contents](http://www.nhc.noaa.gov/graphics_at2.shtml?cone#contents) . The National Hurricane Centre is the official agency for issuing forecasts and warnings for tropical storms and hurricanes in the North Atlantic basin. Decision making should be based on these official forecasts.

**Impacts:** Tropical Storm Force winds are likely to further damage infrastructure already weakened by Irma. Populations will be living in temporary shelters which may be of poor quality and will be especially vulnerable. Locally rough seas and dangerous surf will gradually decay today, and showery rain may lead to a little flooding and maintain a landslide risk.

**This forecast may be amended at any time**

mailto: [GGU@metoffice.gov.uk](mailto:GGU@metoffice.gov.uk)

Phone Duty Forecaster, Global Guidance Unit (GGU), Operations Centre, Met Office, Fitzroy Road, Exeter  
VPN n6225 4319, BT 01392 884319

© Crown copyright 2021

**Winds:** Hurricane force winds are not expected across the Northern Leeward Islands. Tropical storm force winds extend some 120 to 140 miles from the centre of the storm and may affect the northernmost Leeward Islands for the next 3 to 6 hours.

**Storm Surge & Flooding:** Tidal levels over the northern Leeward Islands will continue gradually subside and are largely insignificant. Any showery rain may give a slight flood risk, especially as the ground pre-conditioned from Hurricane Irma.

**Rainfall:** Potentially 15 to 30mm in any showery rain could fall in the 24 hours in the coming days, mainly during Sunday.

## Context

Hurricane Jose may have impacted islands severely affected by the Category 5 hurricane Irma a few days ago, hampering the recovery and humanitarian efforts.

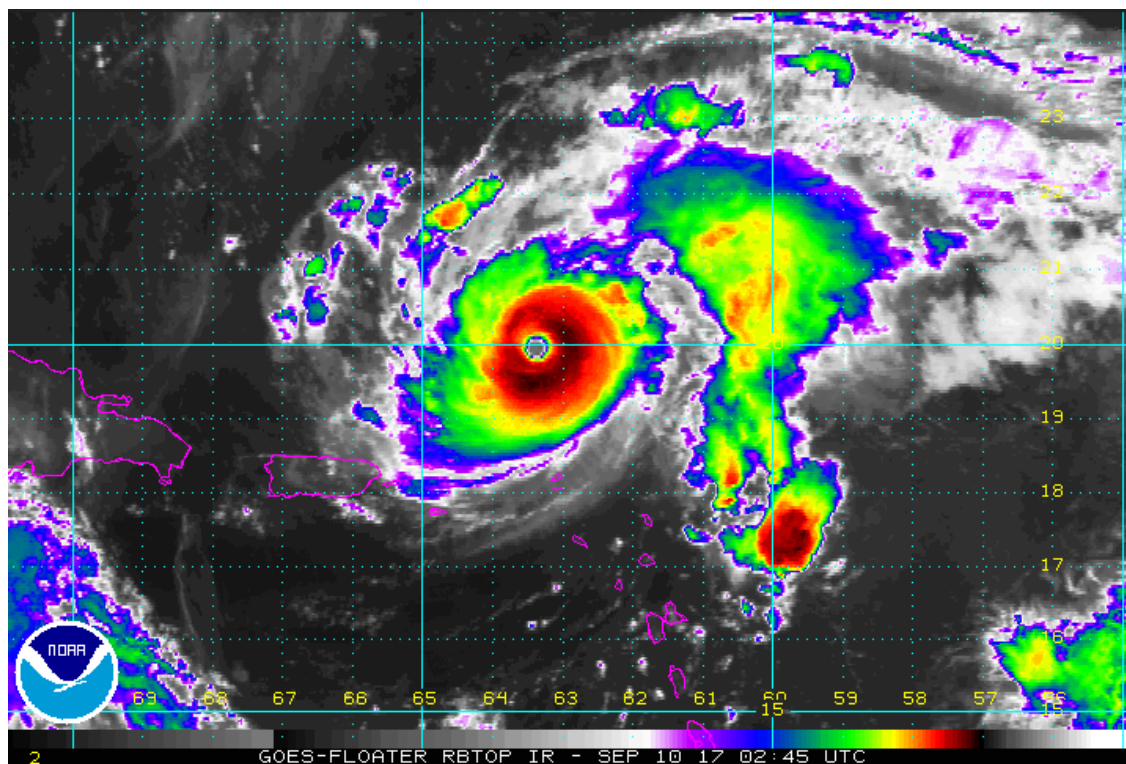


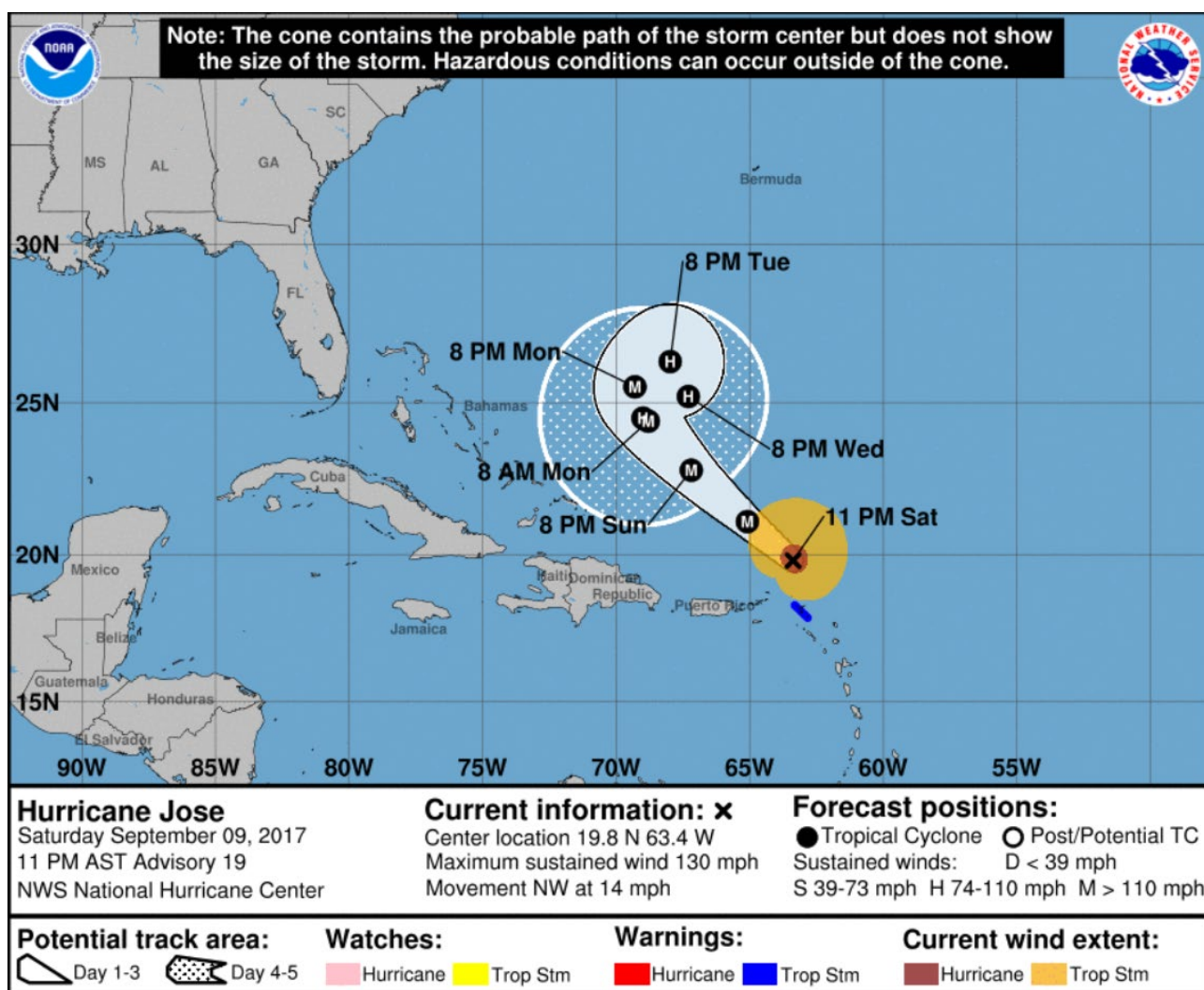
Figure 1: 10/02455 UTC IR satellite image.

This forecast may be amended at any time

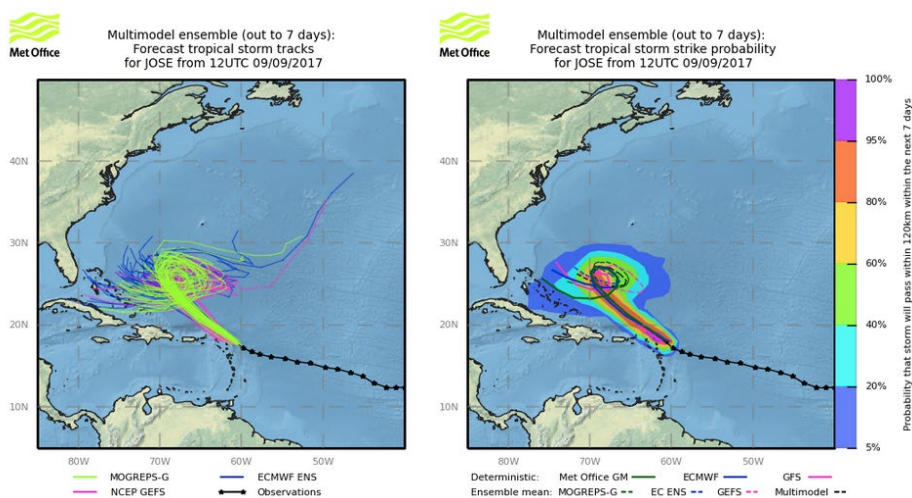
mailto: [GGU@metoffice.gov.uk](mailto:GGU@metoffice.gov.uk)

Phone Duty Forecaster, Global Guidance Unit (GGU), Operations Centre, Met Office, Fitzroy Road, Exeter  
VPN n6225 4319, BT 01392 884319

© Crown copyright 2021



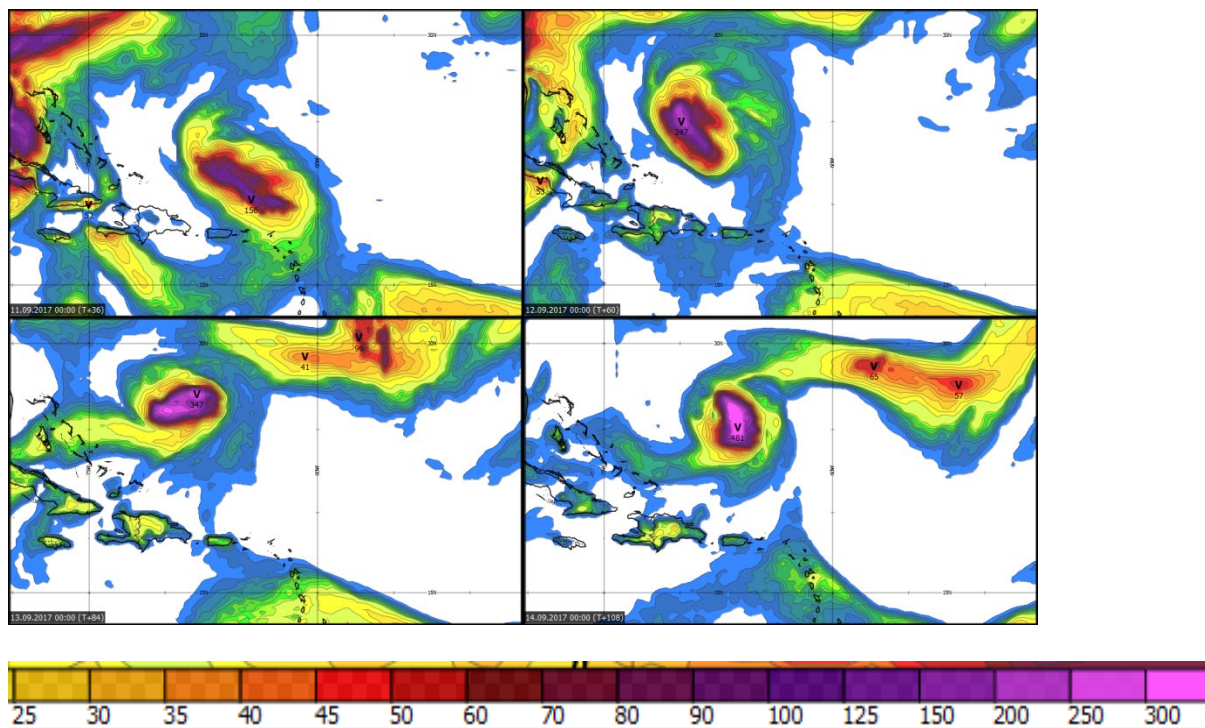
**Figure 2:** 10/0300UTC official forecast track and cone of uncertainty for Hurricane Jose from the National Hurricane Centre. Times on the graphic are in AST (UTC-4). **Note there are no Hurricane watches across the Northern Leeward Islands.**



**Figure 3:** Latest (09/12UTC) ensemble spread of tracks from the Met Office, ECMWF and NCEP.

*This shows the range of possibilities for the track of Jose during the next 7 days. This latest run is consistent with previous issues. Note the consistent tracks from the ensemble members for the next few days.*





**Figure 4:** 09/12Z UKGM 24 hour rainfall totals for the next 4 days in millimetres. Saturday (top left), Sunday (top right), Monday (bottom left) and Tuesday (bottom right).

*Note the risk of 150 to 250 millimetres along the track of Jose, but with significantly less to the southwest of the track.*

## Sources

NHC, UK Met Office, ECMWF, NCEP, and various media reports.

**Issued at:** 100350 Z      **Meteorologist:** Tony Wardle      **Global Guidance Unit**

**This forecast may be amended at any time**

mailto: [GGU@metoffice.gov.uk](mailto:GGU@metoffice.gov.uk)

Phone Duty Forecaster, Global Guidance Unit (GGU), Operations Centre, Met Office, Fitzroy Road, Exeter  
VPN n6225 4319, BT 01392 884319

© Crown copyright 2021