

The forecast presented here is for May and the average of the May-June-July period for the United Kingdom as a whole. The forecast for May will be superseded by the long-range information on the public weather forecast web page (www.metoffice.gov.uk/public/weather/forecast/#?tab=regionalForecast), starting from 2 May 2014.

This forecast is based on information from observations, several numerical models and expert judgement.

SUMMARY - PRECIPITATION:

Latest predictions for UK precipitation are largely indistinguishable from climatology for both May and May-June-July as a whole.

The probability that UK precipitation for May-June-July will fall into the driest of our five categories is between 20% and 25% and the probability that it will fall into the wettest category is close to 25% (the 1981-2010 probability for each of these categories is 20%).

CONTEXT:

Climatologically late spring and early summer are the driest parts of the year, as shown in Figure P1.

As discussed in the temperature section, no single forcing factor appears dominant and at the same time computer model signals are weak.

Given this lack of signal for any particular atmospheric circulation type, specific regional variation in forecast rainfall relative to average cannot be predicted. Over the 3-month period, May-June-July, the precipitation probabilities are largely indistinguishable from climatology, as indicated by the right-hand side graph in Figure P2. This means that the probability of the exceptionally wet conditions of

May-June-July 2012 are considered low (note how very few of the blue crosses on the right-hand panel of Figure P2 are as high as the grey cross labelled 2012). However, late spring and summer rainfall is often showery in nature so significant regional variability is often likely.

Fig P1

3-month UK outlook for precipitation in the context of the observed annual cycle

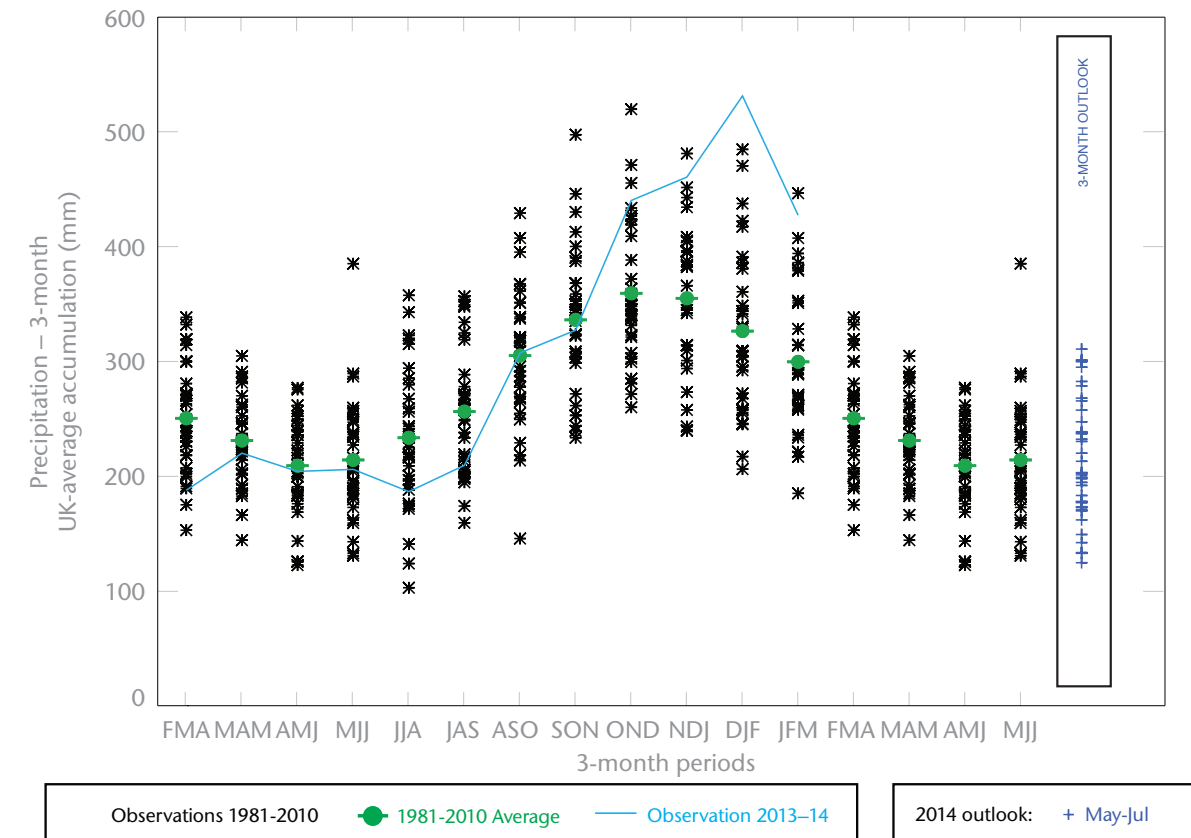


Fig P2

1-month and 3-month UK outlook for precipitation in the context of observed climatology

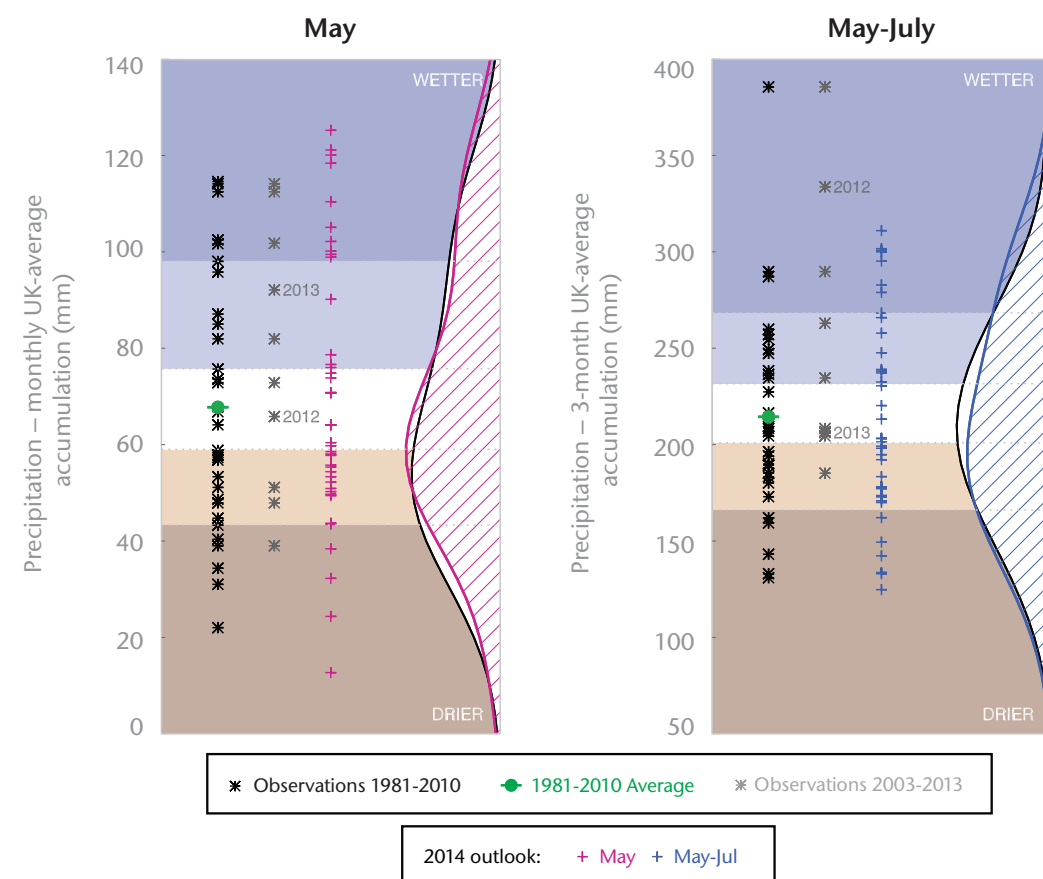
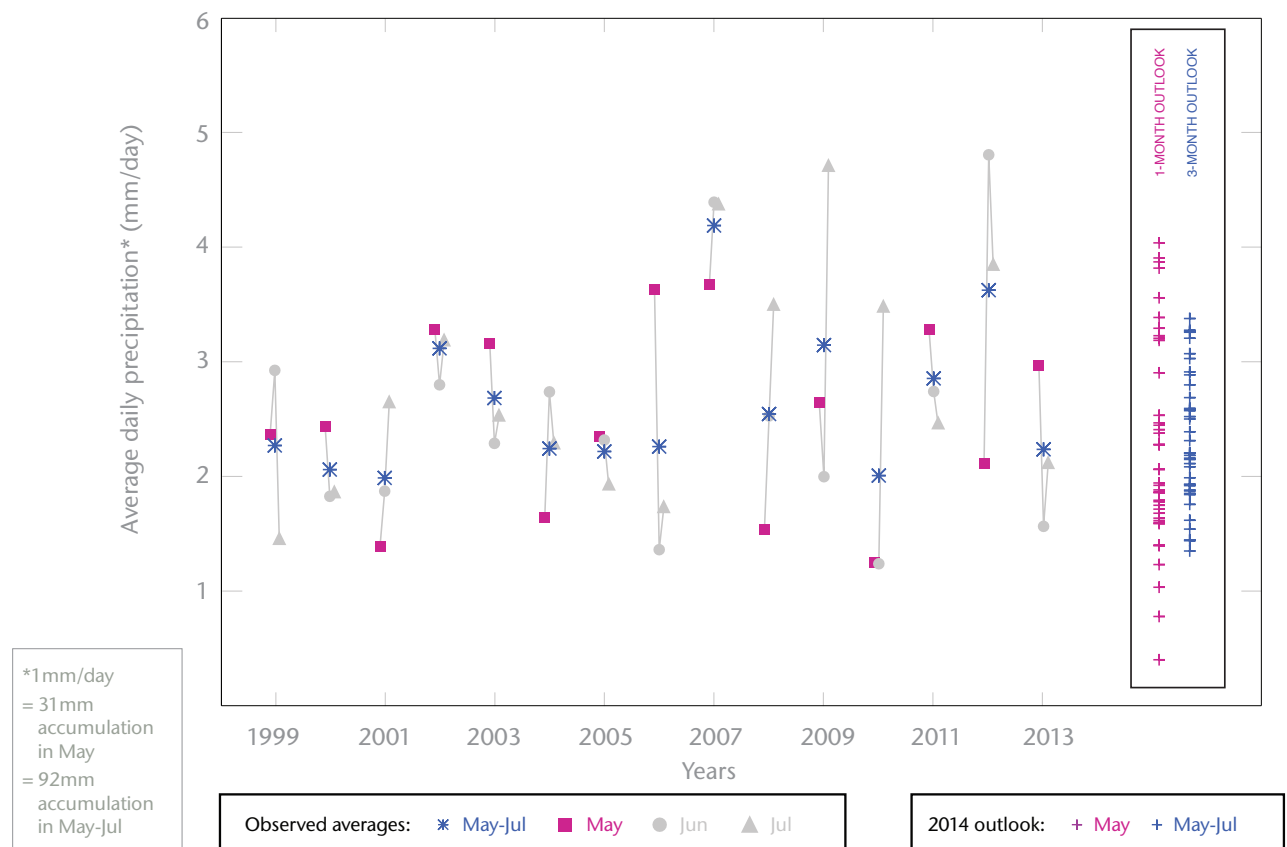


Fig P3

1-month and 3-month UK outlook for precipitation in the context of recent climatology: year-to-year and within-season variability



This Outlook provides an indication of possible temperature and rainfall conditions over the next 3 months. It is part of a suite of forecasts designed for contingency planners.

The Outlook should not be used in isolation but should be used with shorter-range and more detailed (30-day, 15-day and 1-to-5-day) forecasts and warnings available to the contingency planning community from the Met Office.