

Severe Weather Advisory for Bangladesh, India and Myanmar

Severe Cyclonic Storm Mora

Issued on Tuesday, 30th May 2017 at 08:55 local time.

Headline

Severe Cyclonic Storm Mora made landfall near but just south of Chittagong, Bangladesh overnight (UK time). The system will now weaken but continue to produce heavy rain and flooding.

Impacts

The main impact of the storm is expected to be heavy rain, with a further 100-200mm, locally 300mm, of rain falling over the next 24 hours. This is likely to result in further flash flooding. Emerging media reports this morning suggest there has been significant damage to refugee camps in Cox's Bazar, SE Bangladesh.

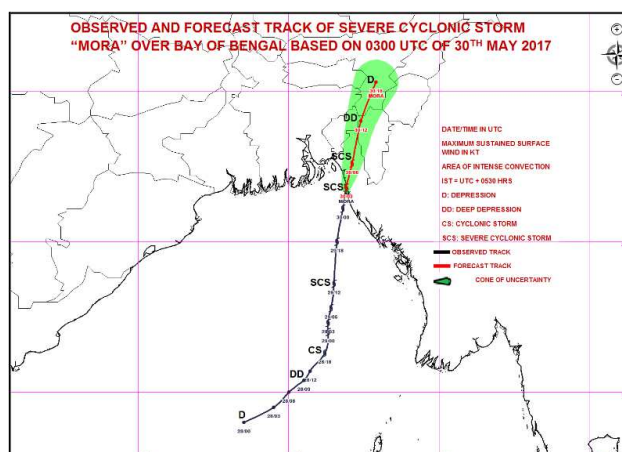
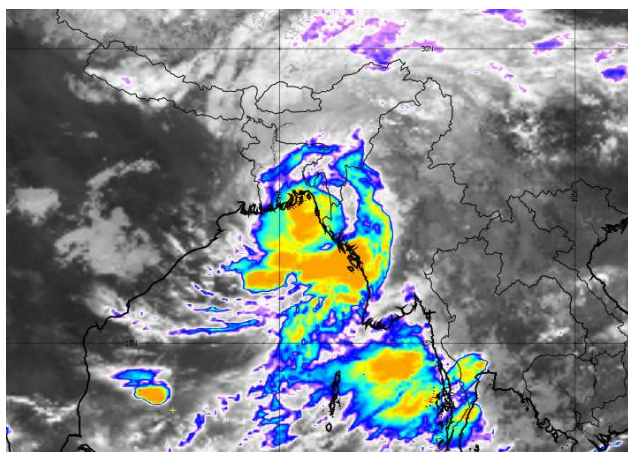
While tropical storm force winds were recorded in Chittagong, the system will now weaken as it moves inland meaning impacts from damaging winds are expected to become less likely with time. Low-lying coastal areas have also reported flooding from a combination of storm surge and 2 metre waves.

Discussion

A tropical storm – centred near 22N 91.9E at 0400 UK time on 30th May – made landfall around 20 miles south of Chittagong. Over the next 12-24 hours, the system is expected to quickly weaken as it moves inland.

In 6 hours to 0700 UK time, Chittagong recorded 56mm of rainfall, but data is relatively sparse in this area with higher amounts expected. Torrential rain and thunderstorms will continue to affect a wide area of SE Bangladesh, far NE India and far N Myanmar through the next 24 hours before easing from the southwest through Tuesday. Flash flooding will be the main hazard from this storm as it moves inland.

For comparison, the last tropical storm of similar magnitude to effect the region was Cyclonic Storm Akash in May 2007, which made landfall 70 miles south of Chittagong. Around 250 houses were reported as destroyed and there were 14 fatalities. No international response was required.



Sources

India Meteorological Department, Bangladesh Meteorological Department, Met Office UM, NCEP, ECMWF, Reuters.

Issued at: 300755Z

Meteorologist: Matthew Lewis

Global Guidance Unit

This forecast may be amended at any time

mailto: GGU@metoffice.gov.uk

Phone Duty Forecaster, Global Guidance Unit (GGU), Operations Centre, Met Office, Fitzroy Road, Exeter
VPN n6225 4319, BT 01392 884319

© Crown copyright 2017