

OUTLYING SCREEN

1912.

ARCHIBALD

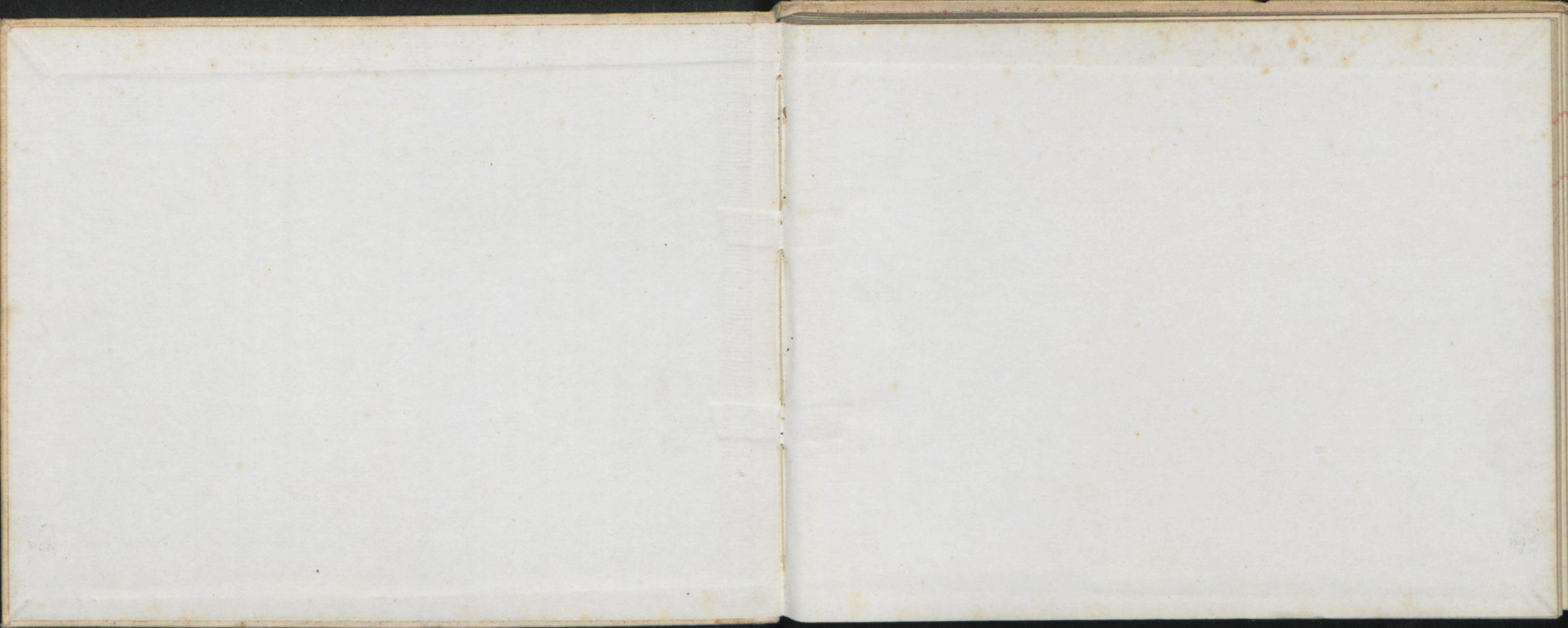
(N. Bay).

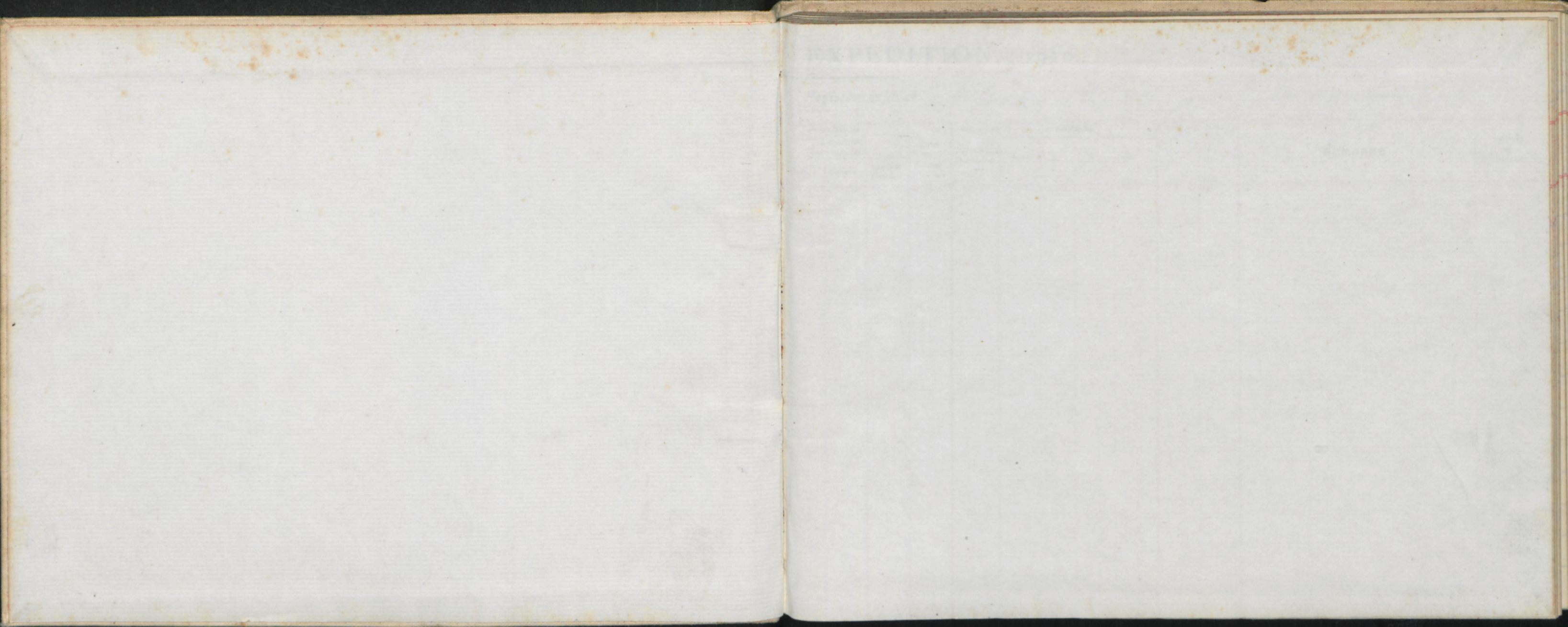
BERTHARD

(S. Bay)

MAY 8th - JULY 13th 1912

BAE 39





EXPEDITION, 1910.

191

Meteorological

Register kept at

[illegible]

BRITISH ANTARCTIC EXPEDITION, 1910.

Month of May.

1912.

Meteorological Register kept at Ramp. (Berland).

Day	Hour	Barometer No.	Attd. Ther. No.	THERMOMETERS				Solar Radn. No.	Terr. Radn. No.	WIND		ANEMOMETER		Weather	CLOUDS		CLOUDS		Rain or Snow	Hours Sunshine	AURORA				REMARKS	Initials of Observer
				Dry Bulb No.	Max. No.	Spirit Min. No.				Direction True	Force	Miles Read	3 Min. Later		Amount	Kind	Direction moving from	Erebus Smoke			N	E	S	W		
May 8 th	10.45			-6.	+14	-11.																				
9 th	3pm.			-17	+1	-20																				S.L.A.
10 th	11.30 am.			-21.		-25																				S.L.A.
11 th	11 am.			-11		-23																				"
12 th	11.30 am.			-7.		-17																				"
14 th	11.30			+2.		-18																				S.L.A.
15 th	11.30			-5.		-10.																				"
16 th	11 am.			-9		-15																				"
17 th	11.30			-12		-16																				"
18 th	11.30			-16		-20																				"
																										"
19 th	11.30			-25		-28																				"

Maximum
at end of year.

Thermometer.

No. 3452

Changed for.

3442 on

the 20th May.

All observations with 3452
70 fms low.

Erebus Smoke

Erebus Smoke ESE.

11 am KNE. 12. SE.

NW.

Not read 13th.

BRITISH ANTARCTIC EXPEDITION, 1910.

Month of May. - June, 1912.

Meteorologica Register kept at

Ramps. 191

[illegible]

EXPEDITION, 1910.

191

Meteorological

Register kept at

to show

[illegible]

