



Met Office

# Met Office 3-month Outlook

Period: May – July 2019 Issue date: 26.04.19

The forecast presented here is for May and the average of the May-June-July period for the United Kingdom as a whole. The forecast for May will be superseded by the long-range information on the public weather forecast web page ([www.metoffice.gov.uk/public/weather/forecast/#?tab=regionalForecast](http://www.metoffice.gov.uk/public/weather/forecast/#?tab=regionalForecast)), starting from 30 April 2019.

This forecast is based on information from observations, several numerical prediction systems and expert judgement.

## SUMMARY – TEMPERATURE:

For May and May-June-July as a whole, above-average temperatures are more likely than below-average temperatures.

Overall, the probability that the UK-average temperature for May-June-July will fall into the coldest of our five categories is around 5%, and the probability that it will fall into the warmest of our five categories is between 45% and 50% (the 1981-2010 probability for each of these categories is 20%).

## CONTEXT:

Borderline El Niño conditions persist in the Tropical Pacific Ocean, and appear likely to continue in the coming months. While historically El Niño slightly increases the likelihood of below-average pressure near the UK at this time of year, the overall effect is likely to be small. Meanwhile, in the North Atlantic Ocean, the current pattern of sea surface temperatures (SSTs) moderately increases the chances of higher-than-average pressure across Northern Europe. During spring and early summer, high pressure is usually associated with warmer-than-average conditions. In addition, SSTs close to the UK are

currently higher than normal, which also increases the chances of above-average temperatures. For both May and May-June-July, the Met Office long-range prediction system and systems from other prediction centres around the world show a small but consistent increase in the likelihood of high pressure near the UK. In addition, warming of climate has led to recent years tending to be warmer than the long-term average (see figure T2). These factors imply an increased likelihood of warmer-than-average conditions.

Fig T1

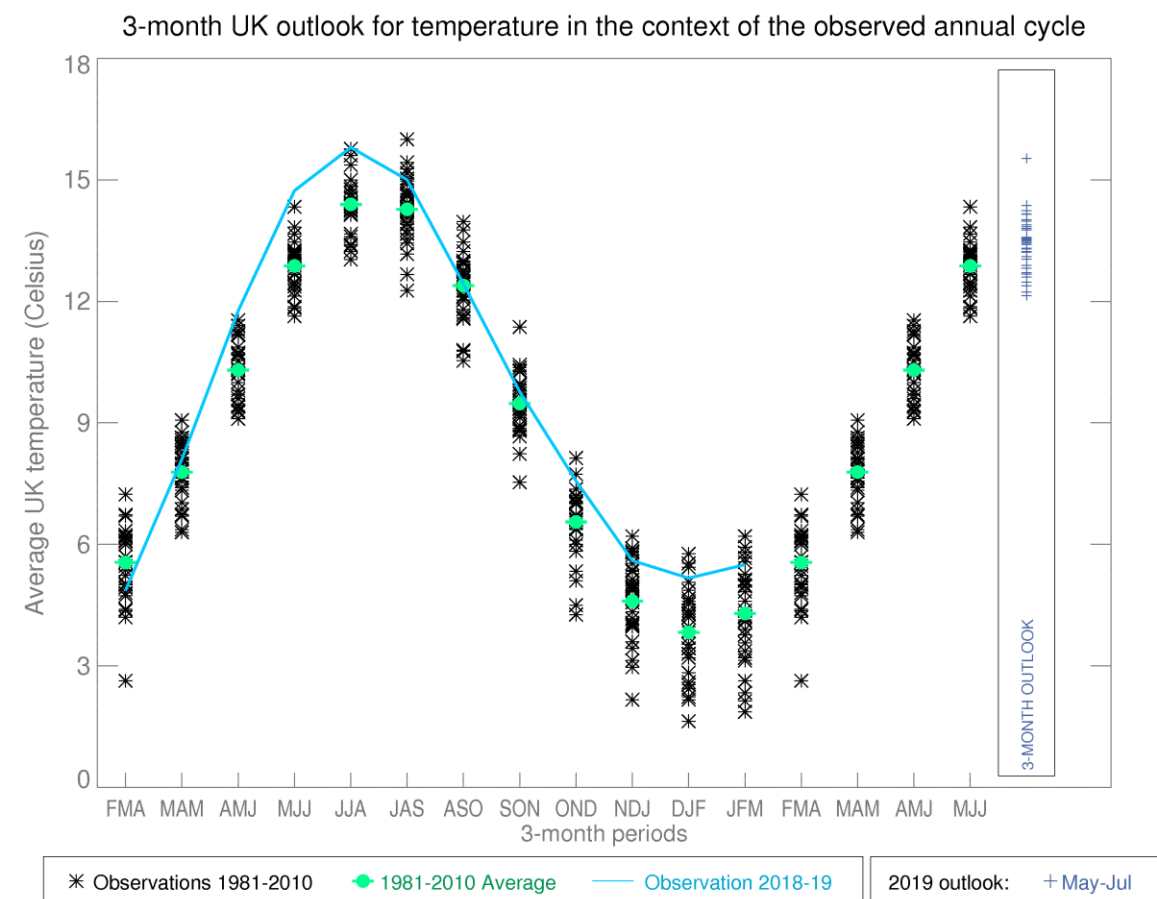


Fig T2

1-month and 3-month UK outlook for temperature in the context of observed climatology

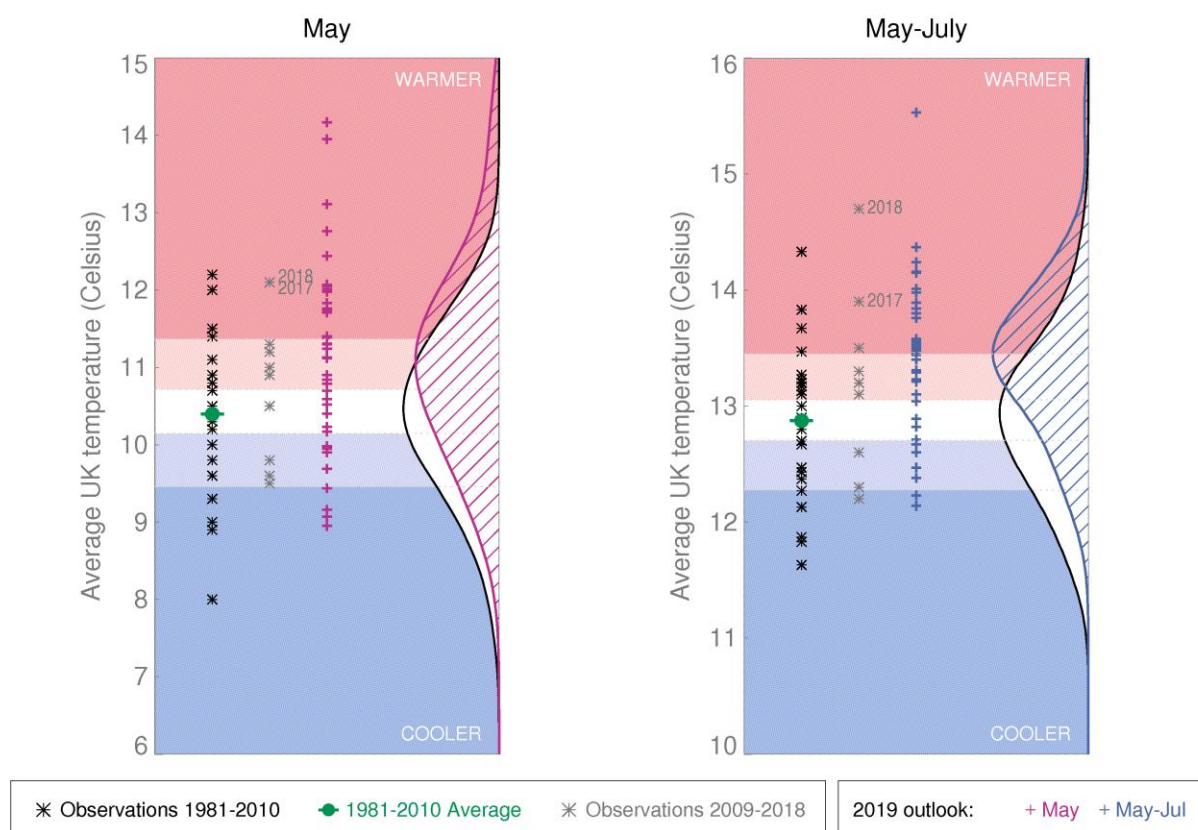
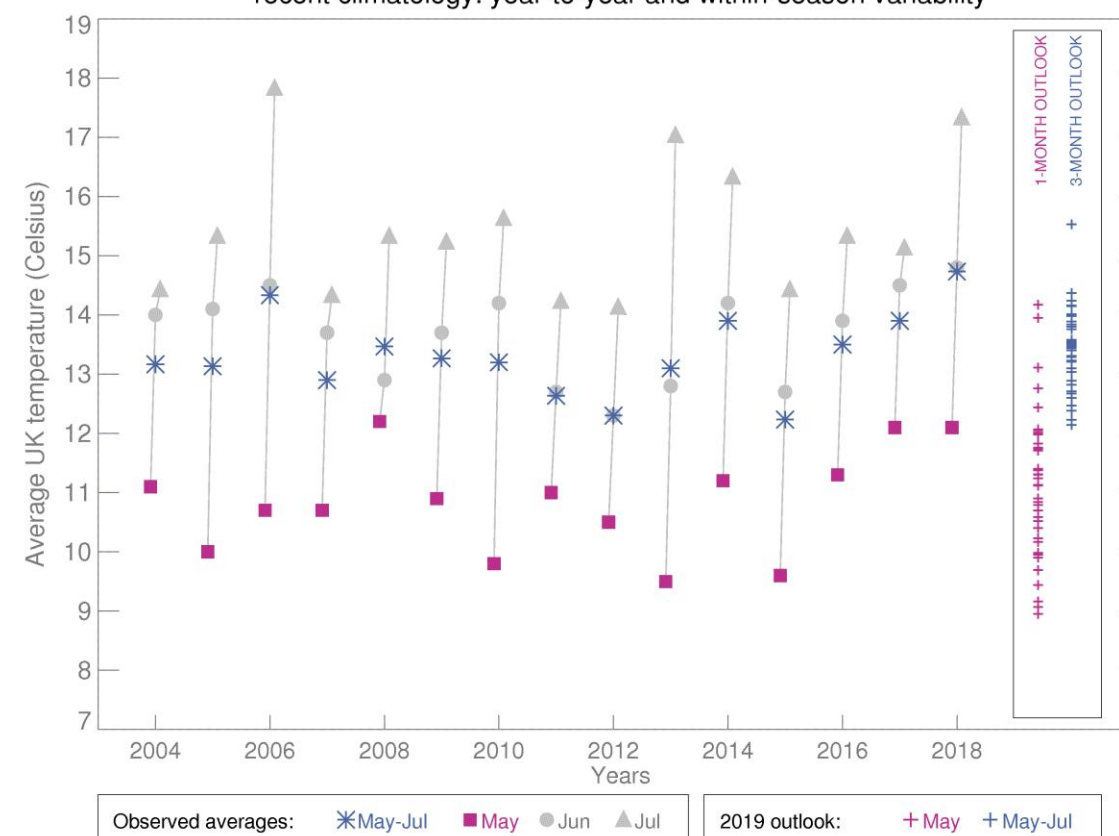


Fig T3

1-month and 3-month UK outlook for temperature in the context of recent climatology: year-to-year and within-season variability



This Outlook provides an indication of possible temperature and rainfall conditions over the next 3 months. It is part of a suite of forecasts designed for contingency planners.

The Outlook should not be used in isolation but should be used with shorter-range and more detailed (30-day, 15-day and 1-to-7-day) forecasts and warnings available to the contingency planning community from the Met Office.