

Observers. ERGR Evans  
EA Wilson  
G. Taylor  
T. Gran  
E. L. Atkinson  
C. S. Wright  
A. C. Garwood  
E. Nelson

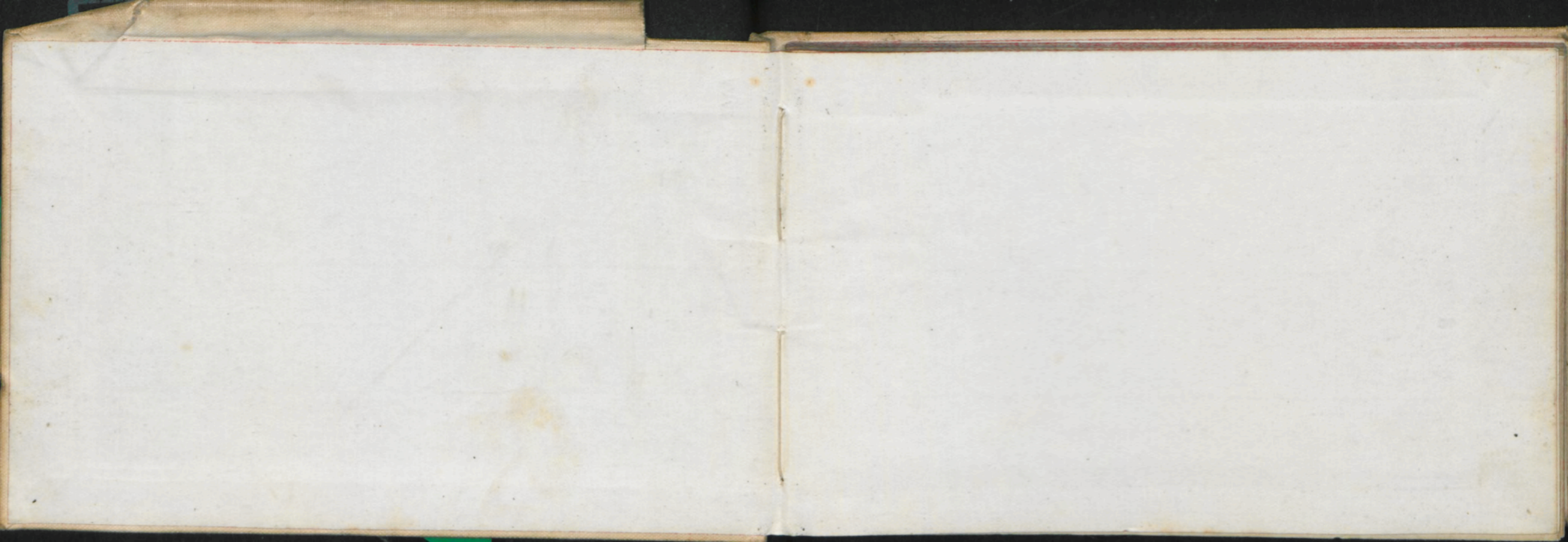
Outlying

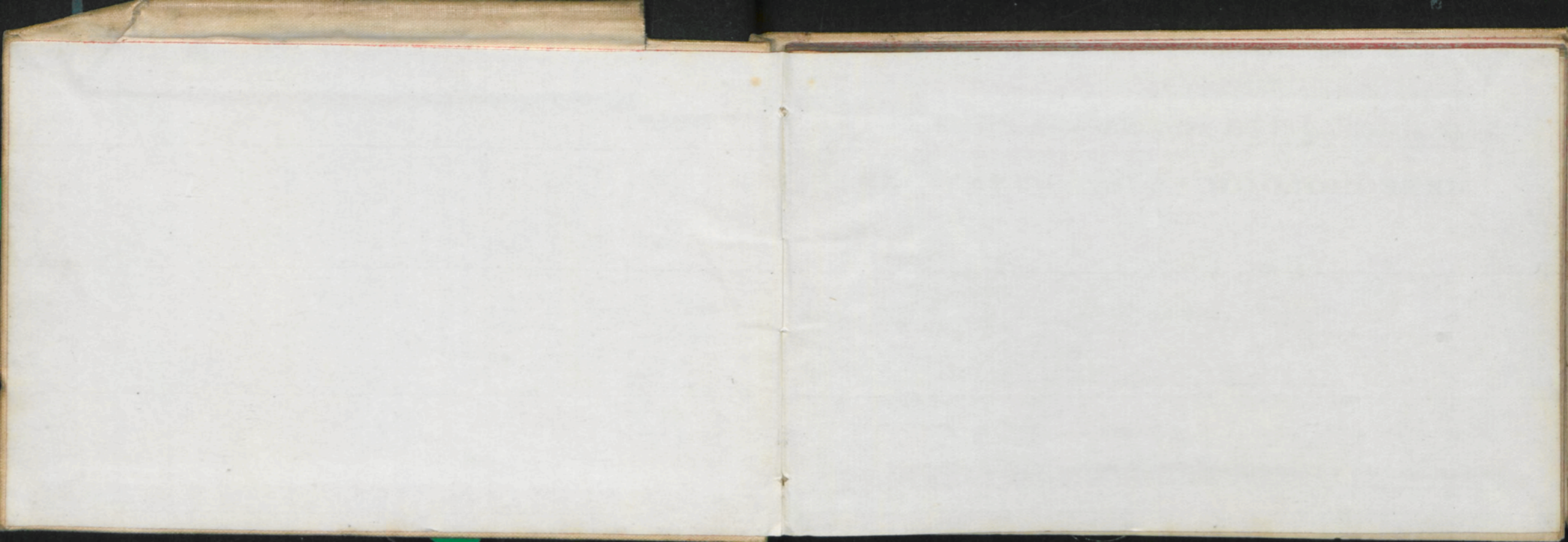
Screens

C. F. EVANS.

Winter 1911

MAY 8<sup>th</sup> 1911 - OCT. 16<sup>th</sup> 1911.  
BAE 38





BRITISH ATLANTIC EXPLORATION 1818  
INSTRUMENTS IN USE AND THEIR CORRECTIONS  
METEOROLOGICAL OBSERVATIONS

TAKEN AT

*Cape Evans Ross Island*

During 1818

By

Position of Station: Lat. Long.

Height of Barometer Cistern above Mean Sea Level

BRITISH ANTARCTIC EXPEDITION, 1910.

*Out-lying Screens —*

# METEOROLOGICAL OBSERVATIONS

TAKEN AT

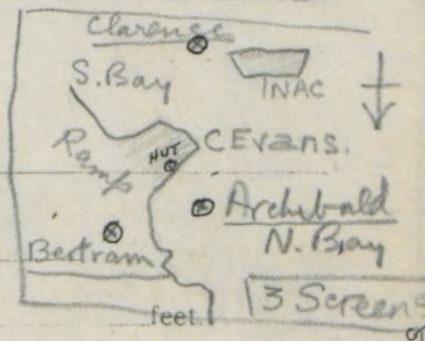
*Winter Quarters, Cape Evans, Ross Island.*

During 1911

By

Position of Station: Lat. \_\_\_\_\_ Long. \_\_\_\_\_

Height of Barometer Cistern above Mean Sea Level \_\_\_\_\_ feet.



## INSTRUMENTS IN USE, AND THEIR CORRECTIONS.

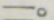



BAROMETER, No. \_\_\_\_\_ COMPARED WITH STANDARD at \_\_\_\_\_ in 19 \_\_\_\_\_

Correction  
required

### THERMOMETERS

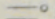
		-75	-50	-25	-12	+14	+32	
<i>RAMP.</i>	Max. <i>Dry Bulb.</i> No. _____							
	Min. <i>in Shade.</i> No. <i>89</i>	+1.5	+1.0	+0.5	+0.5	0.0	-1.0	
<i>South Bay</i>	Min. <i>in Shade.</i> No. _____							
	Max. <i>in Sun.</i> No. <i>34.35</i>							
<i>North Bay</i>	Min. <i>on Snow.</i> No. <i>34.48</i>							
	Max. <i>Dry Bulb.</i> No. <i>34.78</i>							
	No. <i>8482</i>							

**WEATHER.**—Initials of the Beaufort Notation and Symbols adopted by international agreement for recording phenomena of weather.

b.	blue sky	r.	● rain.	~	glazed frost.
c.	detached clouds.	p.	passing showers.		
o	overcast.	d.	drizzling rain.	☞	gale.
m.	 mist.	e.	wet air without rain falling.	q.	squally.
f.	 fog.	s.	* snow.		
g.	gloomy.	+	snow drift.	○	solar corona.
u.	ugly, threatening.	⊠	snow lying.*	⊕	solar halo.
z.	∞ dust haze or smoke.	←	ice crystals.	☾	lunar corona.
v.	unusual visibility.	h.	▲ hail.	☾	lunar halo.
t.	⊥ thunder.	Δ	soft-hail.		
l.	< lightning.	w.	 dew.	(	rainbow.
K	thunderstorm.	x.	 hoar frost.	☀	aurora.
		V	silver-thaw. rime.		

\* More than half the country in sight round the station covered with snow.

NOTE.—Do not use "h" for haze, nor "sh" for showers.

A line under an initial or the exponent "2," appended to a symbol, denotes intensity thus h or ▲<sup>2</sup> indicates heavy hail, <sup>o</sup> indicates light fog or mist.

**BEAUFORT WIND SCALE.**

Beaufort Number.	Description of Wind.	Equivalent velocity in miles per hour.
0	Calm.	0
1	} Light Breeze.	2
2		5
3		10
4	} Moderate Breeze.	15
5		21
6		27
7	} Strong Wind.	35
8		42
9	} Gale forces.	50
10		59
11	} Storm forces.	68
12		75
	Hurricane.	above 75

## INSTRUCTIONS.

**Barometer.**—The aneroid barometer should be lightly tapped before taking a reading.

**Hypsometer.**—Only pure water obtained from snow to be used. No water should be allowed to splash into the bulb of the thermometer during an observation.

**Thermometer.**—The aluminium sling thermometer should be allowed to remain in the open for at least ten minutes before a reading is taken in order that the bulb may acquire a temperature near that of the air. When an observation is to be made the thermometer should be opened and swung for a minute; the swinging must then be repeated until three readings have been obtained, each giving the same temperature. The final steady reading should then be entered in the note book.

**Wind.**—All wind directions must be "true" and not "magnetic."

**Clouds.**—The proportion of the sky covered by cloud should be indicated on a numerical scale running from 0, cloudless, to 10, completely overcast. The numbers given are to refer solely to the amount of the sky covered and not to the density, height or other quality of the cloud. Fog must be regarded as a cloud at ground level, and 10 must accordingly be entered for the amount of cloud on foggy days. If clouds can be seen through a thin mist, the amount of real cloud should be entered in the column and a note made under "Remarks."

## BRITISH ANTARCTIC EXPEDITION, 1910.

### REMARKS.

The following are the chief cloud forms:

Cirrus	...	(Ci)	...	} High.
Cirro-Stratus	...	(Ci-St)	...	
Cirro-Cumulus	...	(Ci-Cu)	...	
Alto-Cumulus	...	(A-Cu)	...	
Alto-Stratus	...	(A-St)	...	} Low.
Strato-Cumulus	...	(St-Cu)	...	
Cumulus	...	(Cu)	...	
Stratus	...	(St)	...	
Nimbus	...	(Nb)	...	

Enter cloud directions as you would wind directions, *i.e.*, the direction from which they are coming.

**Weather.**—The Beaufort notation given on page 3 should be used.

**Remarks.**—Haloes and any unusual phenomena should be noted. It is also desirable that general topographical notes should be added, as for instance, "In valley running N W.," "To-day's camp higher than yesterday's," etc.

BRITISH ANTARCTIC EXPEDITION, 1910.

REMARKS.

OBSERVER'S  
INITIALS.

DAY.	HOUR	POSITION.		Bar	Hyps- omet- er	Dry Bulb	Wind Dir. True	Wind Force	Weather	CLOUD.		
		Lat.	Long.							Amount	Kind	Direction from upper lower
8 <u>V</u> 1911		Time		Max	Min.		Temp.			Screen -		
"		11-7 am.		(X)	-3.7		-10			North Bay		
"		3.30 pm.		-8.5	-10.3		-8.8			do		
"		6.7 pm		-9.8	-12.0		-11			Ramp.		
9 <u>V</u> "		1.10 pm		-4.2	-12.5		-4.2			North B.		
"		3.40 pm		-9.5	-11.0		-11					
"		6.0 pm		-6.1	-15.0		-12.5			Ramp		
10 <u>V</u> "		3.15 pm.		(X)	-15.5		-10			North B.		
"		6.10 pm		-9.3	-18.0		-13.0			Ramp		

BRITISH ANTARCTIC EXPEDITION, 1910.										OBSERVER'S INITIALS.	
REMARKS.											
	Time	Max	Min	Temp.		Screen.					
11 <u>V</u> "	11.50 am	-9.7	-15	-10.5		North B.					
"	1.0 pm	-11.3°	-16°	-12.5		Ramp.					
"	3.45 pm	-10°	-15.5°	-14.2°		South B.					
"	5.55 pm	-11°	-16.2	-14.1		Ramp.					
12 <u>V</u> "	12.50 pm	-9.5°	-	-9.5°		North B.					
"	4.10 pm.	-7.0	-18°	-7.5°		Ramp.					
13 <u>V</u> "	11.20 a.m.	-	-21.2	-13		North Bay					
	4.30 pm.	-4.1	-18.5°	-13°		South Bay					
	5.26 pm.	-	-14	-13		North Bay					
	5.40 pm.	-	-16.3	-15.4		Ramp					

13° Station  
New Paper  
on  
Thermograph

DAY.	HOUR	POSITION.		Bar.	Hypsomet- er	Dry Bulb	Wind Dir. True	Wind Force	Weather	CLOUD.	
		Lat.	Long.							Amount	Direction from upper lower
Sunday				max		min.			Ramp		
14 <u>V</u> 1911		10.30 AM		-10.5		-19.5		-11.0°		North B.	{ No strikes Thermos
"		4.30 PM		-12.5		-21.3		-21.0°		Ramp	
"		5.30 PM		-11.4		-23.0		-22.5		South B.	
"		6.12 PM		-14.3		-23.2		-23.0		North B.	
15 <u>V</u> 1911				No obs.						South B.	
15 <u>V</u> 1911		11.10 AM		-13.5		-24.8		-15°		North B.	
"		5.0 PM		-12.8		-25.8		-14.5°		Ramp	
16. <u>V</u> 1911		6.15 PM		-11.4		-18.		-14.5		North Bay	
"		5.45 PM		-11.1		-21.6		-16.		Ramp	
"		4.5 PM		-10.5		-24.7		-15		South B.	

BRITISH ANTARCTIC EXPEDITION, 1910.							OBSERVER'S INITIALS.	
REMARKS.								
Date	Time	Max.	Min.	Temp.	Screen.			
17 <u>V</u> 11	5.40 PM	-	-	-3.8°	Ramp			
	6.20 PM	-0.7°	-17.0°	-7.2	North B.			
		-	No obs.		South B.			
18 <u>V</u>	5.50 PM	-0.3°	-8.4°	-7.5°	Ramp			
	6.25	Zero	-7.5°	-7.3°	North B.			
		-	No obs		South B.			
19 <u>V</u> 11	10.30 AM	-5.5	-15.5	-14	North B.			
"	Midday	-6.5	-16.8	-7°	Ramp			
"	1.15 PM	Zero	-25.8	-6.5°	South B.			
"	5.45 PM	-6.0	-16.0	-10.0	Ramp			
20 <u>V</u> 11	10.55 AM	-4	-19.5	-18	North			
	6.0 PM	-9	-25.5	-25°	Ramp			
		No obs			South B.			

Not  
re-set for  
2 days.



DAY.	HOUR	POSITION.		Bar Max	Hyps- omet- er	Dry Bulb Min	Wind Dir. True	Wind Force	Weather	CLOUD.	
		Lat.	Long.							Amount	Kind
			Time.						Temp.		Direction from upper/lower
28	V	11.	10.50 am.	-		-23°			-22.2		N. Bay.
"			1.10 pm	-5.9		-25°			-22.8		S. Bay (1)
"			1.45 "	-13.8		-23.2°			-14.2		N. Bay
"			6.5 -	-9.5		-22.5			-18.2		Ramp (0)
29	V	11.	11.50 am	-14.7		-24.7			-22		N. Bay.
			12.50 pm	-18.2		-27.0			-23.8°		S. Bay (2)
			6.15 pm	-214.1		-21.5			-15.6°		Ramp (1)
30	V	"	4.45 pm	-6.8							
			noon	-5.2		-24.7			-13.		North B
			1.0 pm	-4.0		-23.1			-8.3		South B (1)
			4.45 pm	-6.8		-11.8			-11.8		N. Bay (0)
			6.10 pm	-4.2		-15.5			-4.2		New Thaps Thins - Ramp (0)

# BRITISH ANTARCTIC EXPEDITION, 1910.

OBSERVER'S  
INITIALS.

		REMARKS.				INITIALS.
	Time	Max.	Min	Temp	Screen	
31	V II	11.40 a.m.	+16	-13	+15.7	N. Bay.
"	"		No Obs			S. Bay.
"	4.45 p.m.	+8	-4.5	+8	Ramp	
1	VI II		No Obs			N. Bay
1	VI II	6.0 p.m.	+12°	-6°	+4.5°	Ramp (5)
			No Obs			S. Bay. (7)
2	VI	5.45 p.m.	+2.8	-1°	+2.8°	Ramp (3)
	6.15 p.m.	+4°	-2.7°	+1.8°	N. Bay (3 to 4)	
		No Obs.				S. Bay
3	VI	7.3.15 p.m.	+7.5	-7	+5.2	N. Bay (4)
	1.0 p.m.	+15	-16.1	+5.9	S. Bay (4)	
	6.10 p.m.	+5.8	-15.3	+4.9	Ramp (4 to 5)	

DAY.	HOUR	POSITION.		Bar	Hyps- omet- er	Dry Bulb	Wind Dir. True	Wind Force	Weather	CLOUD.		
		Lat.	Long.							Amount	Kind	Direction from upper lower
		Time			max		min		Temp		Screen	
4 VI	1911	12 10 pm			+7		-7		-4.5		N. Bay-	
"		3.10 pm			+7.2		-8.2		-4.1		S. Bay	①
"		3.45 pm			+4.1		-6.8		-6.5		N. Bay.	①
"		6.10 pm			+7.5		-3.3		Zero		Ramp.	①
5 VI	"	12 10 pm			-3.5		-14.7		-4.7		N. Bay.	
		4.20 pm			+19.7		-7		+15.5		N. Bay.	
					No Obs						S. Bay	
		6.15 pm			+11.4		-8		+10.5		Ramp	
6 VI	"	4.20 pm			+19.7		-7.0		+15.5		N. Bay	
					No Obs						S. Bay	
		6.20 pm			+15.2		+9.5		+11.6		Ramp	

# BRITISH ANTARCTIC EXPEDITION, 1910.

OBSERVER'S  
INITIALS.

REMARKS.										Observer's Initials.
		Max	Min	Temp.						
7 VI	12.15 pm	+16.2	-4	-3.5					N. Bay	
"	1.25 pm	+18.0	-15.0	-7.3					S. Bay	
"	4.30 pm	-4.1	-12.0	-10.1					S. Bay	①
"	6.30 pm	-2.7	-3.5	-3.5					Ramp.	
8 VI	11.45 pm	-4.2	-13.7	-7					N. Bay.	
	1.20 pm	+10.0	-14.0	-13.4					N. Bay	②
	3.30 pm	-4.2	-15.0	-13.5					S. Bay	
	5.0 pm	-10.6	-10.6	-14.8					N. Bay	
	6.10 pm	-10.2	-10.2	-16.0					Ramp.	
9 VI	12.20 pm	-2.7	-14.7	-7					N. Bay.	①
	5.0 pm	-1.8	-14.2	-4.9					S. Bay.	①
	6.20 pm	-1.3	-15.1	-12.0					Ramp.	②

DAY.	HOUR	POSITION.		Bar	Hyps- omet- er	Dry Bulb	Wind Dir. True.	Wind Force	Weather	CLOUD.		
		Lat.	Long.							Amount	Kind	Direction from upper lower
10. VI '11		Time			No Obs						Screen	
					do							
					do							
11. VI '11	11.40 am				+7	-13	-4		North B.			
	12.15 pm				+6.6	-5.8	-3.5		South B.			
	6.10 pm.				-3.8	-7	-5.5		Ramp.			
12. VI '11	1.15 pm.				-0.8	-9	-6		South B.			
	6.10 pm.				-3	-13	-7		Ramp.			
13. VI '11	1.0 pm.				-5.8	-26.5	-22		South B.			
	3.30 pm				(+11.8)	-25.2	-25.2		North B.			
	4.15 pm.				-6.3	-23.5	-18.5		Ramp.			
	7.00 pm				-20.5	-26	-23.2		North B.			

BRITISH ANTARCTIC EXPEDITION, 1910.										OBSERVER'S INITIALS.	
REMARKS.											
		Time	Max.	Min.	Temp.	Screen					
14. VI '11	3.50 pm	-9°	-15.5°	-9°		By. Bay					
"	5.0 pm	-	-19.2	-6.0°		Ramp					
"		No Obs				S. Bay					
15. VI '11	5.00 pm	-	-16.8	-15.1		Ramp					
	6.30 pm.	-4	-17.2	-16.2		N. Bay.					
16. VI '11	11.50 am	-13	-24	-13		N. Bay					
	1.10 pm.	-4.2°	-29.5°	-15.2°		S. Bay					
	6.10 pm.	-13.6°	-20.8°	-17°		Ramp					
17. VI '11	3.45 pm.	-11	-	-11.6		N. Bay					
	6.15 pm.	-10.2	-20.1	-14.5°		Ramp					
		No Obs.				S. Bay					

DAY.	HOUR	POSITION.		Bar	Hyps- omet- er	Dry Bulb	Wind Dir. True	Wind Force	Weather	CLOUD.		
		Lat.	Long.							Amount	Kind	Direction from upper lower
18 VI					No Obs							
19 VI	4 pm.				-6		-26.7		-24		South Bay.	
	6.5 pm.				-8.7		-26.5		-24.5		Ramp.	
	5.40 pm.				-6		-26		-25.8		N. Bay.	
20 VI	12.20 pm.				-23°		-31.8°		-25.2		N. Bay.	
					No Obs						S. Bay	
											Ramp	
21 VI	12.20 pm.				-24.5		-33.5		-31.5		N. Bay	
					No Obs						S. Bay	
											Ramp	

BRITISH ANTARCTIC EXPEDITION, 1910.						OBSERVER'S INITIALS.
REMARKS.						
22 <u>VI</u>	Time 6.15 pm.	Max. -21.2	Min. -34.5	Temp. 31.2	Screen N. Bay.	
		No obs			S. Bay	
		No obs			Ramp.	
23 <u>VI</u>		-			N. Bay (Re wound Thermog)	
	1.0 pm	-22.0	-36.8	-22.0	S. Bay ①	
	6.10 pm.	-20.2	-35.0	-21.5	Ramp ①	
	12.00 noon.	-15	-24.2	-23.2	N. Bay	
24 <u>VI</u>	1.20 pm	-11.5	-25.3	-23.0	S. Bay ①	
	6.10 pm.	-14.1	-25.3	-23.0	Ramp.	
25 <u>VI</u>						
	1.00 pm	-7.8	-23.5	-14.5	S. Bay ②	
	3.30 pm	-13.5	-28.2	-17.5	Ramp.	
	4.50 pm.	-10.7	-26.0	-14.2	N. Bay.	

DAY.	HOUR	POSITION.		Bar	Hyps- omet- er	Dry Bulb	Wind Dir. True	Wind Force	Weather	CLOUD.		
		Lat.	Long.							Amount	Kind	Direction from upper lower
26 June		Time			Max			min		Temp	Screen	
-		12.10			-14			-28		-28	N Bay	
-		1.00			-13.5			-29		-26.5	S Bay.	
27 June		Time			Max.			min		Temp		
		12.30			-13			-33		-29	Ramp	
		1 pm			-18			-31		-31	N Bay	
28 June		11.45 am			-3°			-32		-27.5	N. Bay	W.
-		12.30			-5°			-35.7		-26.5	S Bay	T.G.
		11.15			-10.5			-33		-25	Ramp	
29 June		1.00			-16			-33.5		-22	S. Bay	Ty
		11.45			-13			-33		-23	Ramp.	
		1.30			-11			-31.8		-26.2	N Bay.	

BRITISH ANTARCTIC EXPEDITION, 1910.						OBSERVER'S INITIALS.
REMARKS.						
Date	Time	Max	Min	Temp	Screen	
30	1.00	-22	-37	-34.5	S Bay	B.

DAY.	HOUR	POSITION.		Bar	Hyps- omet- er	Dry Bulb	Wind Dir. True	Wind Force	Weather	CLOUD.			
		Lat.	Long.							Amount	Kind	Direction from	
												upper	lower
30 Jun	11.10	<u>Time</u> 11.10 am			<u>Max</u> -20			<u>Min</u> -37		<u>Temp</u> -27	<u>Loc</u> Ramp Gt		
—		11.50			—			-35		-34	N. Bay	EE	
July 1	12.0	12.0 Noon			—			-35.2		-33.5	N. Bay	EE	
1	11.40				-23			—		-33	Ramp		
1	1.00	1.0 pm			-22			-37.5		-34.5	S. Bay	T.G.	
2	11.30	11.30 am			-24			-36.6		-30.5	N. Bay.	2L	
2	Noon				-29			-39.5		-37	Ramp.	Chil Bo.	
2	1 pm				-28			-38		-34.5	S. Bay		
July 3 <sup>rd</sup>	11.45				-25			-38		-33	Ramp.		
"	5 pm				—			-36		-30	N. Bay.		
"	5.10				-28			-37.8		-30	S. Bay	T.G.	
July 4	5.15 pm				-25			-38		-25	Ramp		

# BRITISH ANTARCTIC EXPEDITION, 1910.

OBSERVER'S  
INITIALS.

REMARKS.

Clear to north, Hazy to South, light variable E wind.  
Max Not Registering

Min had shaken down. So not taken.

Min Not registering.

Some drift.

G. Y.

DAY.	HOUR	POSITION.		Bar	Hypsomet- er	Dry Bulb	Wind Dir. True	Wind Force	Weather	CLOUD.		
		Lat.	Long.							Amount	Kind	Direction from upper lower
July 4	23.15 (offshore)				max -18.0			min -36.0		24.0	N Bay	
5	3.40				-21			-36		?	Ramp	
5.3	5.00				-21.5			-37		-33.5	S Bay	
-6	12.30				-20			=		-39	Ramp	
-	1.00				-35.5			-45.7		-43	S Bay	
-	8.40 am		(since 4 <sup>th</sup> 23.15)		-18			-42.5		-40.5	N Bay	
7	12.30				-33			-46		-33	Ramp	
7	11 am				Not Recording			-46		-42.5	N. Bay	
8 <sup>E</sup>	8.20 am				-28.5°			-40.5		-36.6	N. Bay	
13 <sup>th</sup>	3 pm				+6.5 WIND			-40.0		-12	Ramp	
13 <sup>th</sup>	3.20 m				+8.5			-44.0		-13	S. Bay	

# BRITISH ANTARCTIC EXPEDITION, 1910.

REMARKS.	OBSERVER'S INITIALS.
(W/B Atkinson lost observing N. Bay)	
Cdnt see temp reading	G.Y.
Yesterday no observations according blizz & la	T.G.
moon not taken. Cleared screen re-	G.Y.
Calm and all together a lovely day.	T.G.
Very clear, Cd see Discovery Mt &c No wind	G.Y.
Perfectly clear towards the South but skies coming up from the north. Another blizz -	T.G.

DAY.	HOUR	POSITION.		Bar	Hyps- omet- er	Dry Bulb	Wind Dir. True	Wind Force	Weather	CLOUD.		
		Lat.	Long.							Amount	Kind	Direction from upper lower
Date	Time			Max		Min				Present		Station
14 July	11.30			+ 10		- 10				+ 5		Ramp.
"	12.15			+ 17.5		- 52				0		N. Bay
15	12.30			- 2		- 17				- 12		S. Bay
15	12.30			- 6		- 16				- 13		Ramp.
15	13.00			+ 17(?)		- 15.3				- 13.3		N. Bay
16	11.30			- 8.6		- 19.7				- 18.6		Ramp.
16	12.15			+ 3.8		- 21.8	21.8			- 22.2		N. Bay
16	15.10			- 7.0		- 23.0				- 20.0		S. Bay
17 July	8.20			- 8.5		- 23.5				- 23.5		N. Bay
17 July	11.25			- 13.8		- 28				- 16		Ramp
17	14.00			- 13.0		- 24.5				- 17		S. Bay

# BRITISH ANTARCTIC EXPEDITION, 1910.

OBSERVER'S  
INITIALS.

REMARKS.

Not been read since July 8<sup>th</sup>

Max in N.B., evidently N.E. Therm. trace put on 12.15 -

Drifting 15 fathoms high.

Fairly Clear, Cold wind from South.

Calm Gloomy and partly overcast.

15

15

15

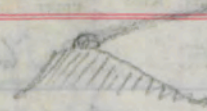
15

DAY.	HOUR	POSITION.		Bar	Hyps- omet- er	Dry Bulb	Wind Dir. True	Wind Force	Weather	CLOUD.			
		Lat.	Long.							Amount	Kind	Direction from	
												upper	lower
18 <sup>th</sup> Jul	11.15	—	—	max	—	—	min	—	—	Present	Ramp		
				-13.8			-26			-25			
	norm }			-13			-27½			-26	N Bay		
18 <sup>th</sup> Jul	4½ am			-16			-28			-26	S Bay		
19 July	8.30 am.			-23			-32			-31	N. Bay		
19 July	11.10 am			-22½			-35			-28	Ramp		
19 "	4.20 pm			-26.5			-34			-33.5	S Bay		
20 <sup>th</sup> "	8.30 am			-15			-34			-29	N. Bay		
20 <sup>th</sup> "	11.10 A.M.			-13			-29			-19	Ramp		
20 "	12.45 pm			-20			-36			-28	S Bay		
21 July	11.10 am			-21			-35			-29	Ramp		
21 July	12.45			-21.5			-37.5			-31	S Bay		

# BRITISH ANTARCTIC EXPEDITION, 1910.

OBSERVER'S  
INITIALS.

## REMARKS.



Strong cloud-streak over Erebus, going South. G.S.

Colored sky to North. Erebus cloud partly to SW: over 90° azim

Slight purple of cloud over Erebus

Light enough today to take the readings without artificial  
Very clear. Slight wind from North. (no Erebus cloud) means  
clouds coming up from the SE

J. E. G.

T. G.

T. G.

DAY.	HOUR	POSITION.		Bar	Hyps- omet- er	Dry Bulb	Wind Dir. True	Wind Force	Weather	CLOUD.			
		Lat.	Long.							Amount	Kind	Direction from	
												upper	lower
				<u>max</u>			<u>min</u>	<u>Present</u>				<u>Station</u>	
July 21	11.50			—			-34	-31				North Bay	
" 24	12.20			+9			-33	-6				South Bay.	
" 24	10.45			+7?			-39.5	-8.8				N. Bay	
24	11.15			+7.5			-36	-2				Ramp	
July 25	8.25 am			-5			-19.5	-17.3				N. Bay	
July 25	12 noon			-6			-23	-12				S. Bay	
" "	11 A.M.			0			-20	-10				Ramp	
26 <sup>th</sup>	12.30			-6.5			-19	-15				Ramp	
* 26 <sup>th</sup>	1.0 P.M.			-4.8			-19	-16.2				N. Bay.	
26	1.30 P.M.			-6.0			-22	-16.5				S. Bay	
* all these Readings by daylight.													

# BRITISH ANTARCTIC EXPEDITION, 1910.

OBSERVER'S  
INITIALS.

## REMARKS.

} Three days interval. No cloud on Pebrus.

} Beautiful clear calm day - Return of Daylight -  
 } Pebrus + smoke apparently drifted to  
 } north (low down) before rising above mt.

}

J.B.B.  
 E2  
 E2  
 G.J.  
 E2  
 T.G.

DAY.	HOUR	POSITION.		Bar	Hyps- omet- er	Dry Bulb	Wind Dir. True	Wind Force	Weather	CLOUD.		
		Lat.	Long.							Amount	Kind	Direction from upper lower
27 July	11.20			max		max			Present	-27	Lo	Ramp
—				-14.3		-27.5				-25.5	S. B.	
—	1.15 PM			-14.5		-27				-27.8	N. Bay	
28 July	10.55			-12.7		-25				-20	Ramp	
—	Noon			-19		-30				-30	S. Bay	
—	3.0			-25.5		33.5				-23.8	N. Bay	
29 <sup>th</sup>	11.30			-18		-28.3				-16	Ramp	
	12.10			-12 <sup>1</sup> / <sub>2</sub>		-26				-12.5	N. Bay	
	5 pm			-12.5 <sup>+</sup> 5?		-29				-19	S. Bay	
30 <sup>th</sup>	11.30			-11		-30.5				-35.3	S. Bay	
—	Noon			-17.3		-34.0				-32.6	N. Bay	
—	12.30			-11.6		-29.6				-29	Ramp.	
				-15		-25						

# BRITISH ANTARCTIC EXPEDITION, 1910.

OBSERVER'S  
INITIALS.

## REMARKS.


rather high Pyramid of snow over E. at 11 am. G.T.  
 Griffiths Pyramid was not visible. 1/2 Blizz. Tg  
 Slightly Drift. Inaccessible I nearly hidden. E2  
 Eriks with large cloud like a top-hat: calm. G.T.  
 The golden point of the approaching day, has forced the gloomy night  
 away - and lefty lay the western mountains. Tg  
 Very strong wind on Ramp, twice (?) that on Cape (Eriks snow low) G.T.  
 (max doubtful) Eriks <sup>seen</sup> apparently going N. G.T.  
 Strong southerly wind and occasionally drift - Aurora to the SE Tg  
 Clear. ELA  
 Note: Present Temp by spirit = 29.1° 22.  
 ELA.

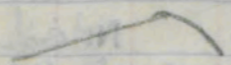
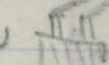
DAY.	HOUR	POSITION.		Bar	Hyps- omet- er	Dry Bulb	Wind Dir. True	Wind Force	Weather	CLOUD.		
		Lat.	Long.							Amount	Kind	Direction from upper lower
31 July	11:30			<u>max</u> -21.5			<u>Present</u> -26		<u>min</u> -34.5		<u>Loc</u> Ramp	
31 —	12:30			-28			33.5		32.2		N.B.	
31	12:00			-28			34.0		36.0		S Bay	
Aug 1 <sup>st</sup>	8:20			-25			-28.8		-28.6		N.B.	
1 <sup>st</sup>	11:40			-20			-30		-30		Ramp	
1 <sup>st</sup>	12:30			-24			-36		-36		S Bay	
Aug 2 <sup>nd</sup>	8:25 <sup>am</sup>			-13			-28.8		-28.6		N. Bay	
2	11:45 am			-14			-23.5		-30		Ramp	
2	12 3/4			-14.7			-32		-35			
3	8:20 <sup>am</sup>			-22.2			-26		-28.2		N. Bay	
4	11:30 <sup>am</sup>			-5.5	checked		-22		-21.5		—	
3	11 am			-11 1/2			-11 1/2		-34		Ramp	

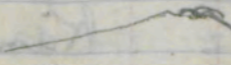
# BRITISH ANTARCTIC EXPEDITION, 1910.


OBSERVER'S  
INITIALS.

## REMARKS.

 Helix cloud flowing down slope S  
Changed Barograph Paper.

 slight cloud going NW. <sup>smoke</sup> at that looking W 

 Two very low pimple of cloud over E

 G. Ramp <sup>Temp</sup> { Helix smoke indicating }  
11 am on 3<sup>rd</sup> { uniform wind to NW }

G.T.  
E2

E2  
G.T.  
Tg

G.T.  
E2

E2  
E2  
G.T.

DAY.	HOUR	POSITION.		Bar	Hypsomet- er	Dry Bulb	Wind Dir. True	Wind Force	Weather	CLOUD.			
		Lat.	Long.							Amount	Kind	Direction from	
												upper	lower
4 <sup>th</sup> Aug				Max			Present	Min				Place	
	11.30			-7			-14	-16				Ramp	
4 -	1.00			-11			-19.5	-33				S Bay	
5 Aug.	10.45			-14			-28	-32				Ramp	
5 Aug	12.0			-16.4			-31.5	-27				N. Bay	
5 Aug	12.15			-19.5			-32 (26)	-26 33.5				S Bay	
6 Aug	8.30			-9.2			-16.3 (10.5)	-26				N. Bay	
6 <sup>th</sup> Aug	11.20			-9.5			-12	-32				Ramp	
-	4 pm			+1.5			-16	-				N Bay	
-	6 pm			-9.5			-19.5	-32				S Bay	
7 <sup>th</sup> Aug	8.30			-15.0			-25.0	-26				N Bay	

# BRITISH ANTARCTIC EXPEDITION, 1910.

OBSERVER'S  
INITIALS.

## REMARKS.

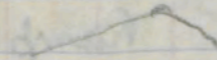
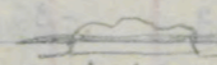
Erebus covered in cloud. Some snow. Ranges barely visible G.T.  
The temperatures have not been read yesterday T.G.  
at 10.30, blowing W (long & low) G.T.  
Misty. E.S.  
Min therm found to have air bubble between bulb & index  
Wind low, very hazy, Erebus invisible, Snow in night G.T.  
Present Vump read on min. C.S.  
B. Ahl N. Bay

DAY.	HOUR	POSITION.		Bar	Hyps- omet- er	Dry Bulb	Wind Dir. True	Wind Force	Weather	CLOUD.		
		Lat.	Long.							Amount	Kind	Direction from upper lower
1911	Time			Max			Min		Present Temp			
7 <sup>th</sup> Aug	1.15 pm			-8.5		-24.0		-21.4			Ramp	
7 -	12.40 pm			-14.8		-28.0		-26.5			S Bay	
8 Aug	8.30			-22		-33.6		-34			N. Bay.	
	12.50			-30		-36		-30			N. Bay.	
	1.00			-24		-38		-32			S Bay.	
8 Aug	1.20			-17		-33.6		-28			Ramp	
9 Aug	8.20			-22.5		-31.7		-26.7			N. Bay	
9 Aug	1.15			-23.5		-35.5		-34.5			Ramp	
9 Aug	1.15			-24.		-36.		34.8			S Bay.	
9 Aug	1.00			-25		-35		34.5			N. Bay	

# BRITISH ANTARCTIC EXPEDITION, 1910.

OBSERVER'S  
INITIALS.

## REMARKS.


slight cloudy. (Wind SE<sub>2</sub>) Corona on Mon (Dyfling) G7  
E2  
Slight purple on E.  Curious low level cloud on Inace } G7  
Beautiful verdant cloud to N. extending to Castle Rock also }  
R5

DAY.	HOUR	POSITION.		Bar Max	Hyps- omet- er	Dry Bulb	Wind Dir. True	Wind Force	Weather	CLOUD.		
		Lat.	Long.							Amount	Kind	Direction from upper lower
Aug. 10.	8.30			-22			-35		-23.5		N Bay	
-	12			-22			-35		-24		Ramp	
-	12			-23			-35		-24		S Bay	
Aug 12 <sup>E</sup>	12 <sup>E</sup> 8.30			-11			-31.8		-24.8		N. Bay	
12	11.15			-13			-34		-29		Ramp	
13	8.30			-25.5			-37.5		-38		N. Bay	
13	11.15			-33.4			-41.3		-39.0		S Bay	Can.
13	2.15			-29			-33.3		-31		Ramp	
13	12.0			+ + 9			-48		-39		Cape Royal	

# BRITISH ANTARCTIC EXPEDITION, 1910.

OBSERVER'S  
INITIALS.

## REMARKS.

Drift on Ramp, strong wind (W) Pies visible  
Drift from the South.  
Misty.

frost smoke visible to north  
12.30 yellow light from sunlight on clouds  
at 4.30 pm

Slight S<sup>W</sup> breeze

The instruments reset. Calm. Clear sky

DAY.	HOUR	POSITION.		Bar	Hypsomet- er	Dry Bulb	Wind Dir. True	Wind Force	Weather	CLOUD.		
		Lat.	Long.							Amount	Kind	Direction from upper lower
	Time	Place			Max:				Min:		Present	
Aug 14 <sup>th</sup>	8.30	N. Bay			-34.5				-38.7°		-37.7°	
	1.15	Ramp			-28				-34.5		-31	
	1.15	S. Bay			-34.4				-40.2		-38.2	
Aug 15 <sup>th</sup>	8.25	N. Bay			-34.4				-38.0		-37.0	
	3.30	Ramp			-27.5				-35.5		-28.5	
	3.45	S. Bay			-24.5				-40.0		-31.5	
Aug 16 <sup>th</sup>	8.30	N. Bay			-23.8°				-37.8		-33	
	3.30	Ramp			-23				-33		-28	
Aug 17 <sup>th</sup>	8.30	N. Bay			-26.5°				-38.6		-36	
	4.00	S. Bay			-29.5				-41.0		-37	
17	11.30 am	Ramp			-24				-34		-28	

# BRITISH ANTARCTIC EXPEDITION, 1910.

OBSERVER'S  
INITIALS.

## REMARKS.



Rebus active, cloud rising 400 paces. G.T.

Smalls Willy Waas by Seal Rock, due N wind.

Was not near yesterday.

Shifted Thermo. Paper.



Sinking Smoke to East



Calm

Low haze along Western shore.

Sun light very striking on cloud, but not apparently lighting Rebus.

El.

El.

G.T.

VS

El.

GT

El.

VS

El.


G.T.

DAY.	HOUR	POSITION.		Bar	Hypsomet- er	Dry Bulb	Wind Dir. True	Wind Force	Weather	CLOUD.			
		Lat.	Long.							Amount	Kind	Direction from	
		<u>Place</u>										upper	lower
					<u>max</u>			<u>Present</u>			<u>min.</u>		
Wed 18	8.20	N. Bay			-29°			-36.6°			-38°		
— 18	12.00	S Bay			-32.5			-37.0			-40.5		
—	1.30	Ramp			-24			-27			-32		
Sun 20	11.15	N. Bay			+3.4			zero			-46.6°		
	noon	Ramp			+ .1/2			-5 1/2			-32°		
Sa 20	1.m	S Bay			+1. 1/2			-4 1/2			-42		
	6.p.m	Ramp			+0.7"			+0.7			-13.0°		
Monday 21	12.10	S Bay			-0.5			-16. 1/2			-22.5		
	6.P.m	Ramp			+1.0°			-8.0°			-15°		

# BRITISH ANTARCTIC EXPEDITION, 1910.

OBSERVER'S  
INITIALS.

## REMARKS.

Calm and clear  
 Eubus little smoke drifting to SE. Cirrus vertical  
 cloud  at chance of slope  
 Not taken during Blizzard Eubus small purple  
 Not taken since the 18<sup>th</sup>

E.L.  
 IG  
 GT  
 S.S.  
 GT  
 IG  
 F.S.

DAY.	HOUR	POSITION.		Bar	Hypsomet- er	Dry Bulb	Wind Dir. True	Wind Force	Weather	CLOUD.		
		Lat.	Long.							Amount	Kind	Direction from upper lower
<i>Date</i>	<i>Time</i>			<i>Max</i>		<i>Min</i>			<i>Pressure Temp</i>		<i>Screen</i>	
Aug 25	12.50			+11		-20		+6			Ramp	
	12.			+15		-35		+9			S Bay	
	3.45 am			+15		-25		+3			N Bay	
	5.20 pm.			+4.5		± 0.0		± 0.0			Ramp.	
Aug 26	1 pm			+3.5		-7		-6			Ramp	
	3 pm			+7.5		-15.3		-12			S. Bay	
	5.50 pm.			-4.5		-8.6		-4.5			Ramp.	
27	11.10 am			-3		-20		-19			Ramp	
27	6.0 pm			-15.2		-15.0		-12.5			Ramp	
28	12.30 am			+7.8		-23.2		-19.8			N. Bay	
28	3.30			-6		-32		-11			S Bay	
28	11.30			-11		-23.5		-19			Ramp	
28	6 pm			-12		-24		-12			Ramp	

# BRITISH ANTARCTIC EXPEDITION, 1910.

OBSERVER'S  
INITIALS.

## REMARKS.

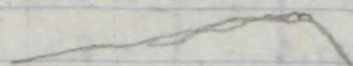
Strong  
SE wind



Slight steam to NW  
Heavy clouds billows to S.  
Strong SE Wind

G.T.  
TG

SE. 2



short cloud going NW

E.a.w.  
GT

SE. 1. Erebus summit clouded over.

Strong SE wind (3) Erebus almost obscured

E.a.w.

28<sup>E</sup> 12.30 shifted Thermograph Papers

GT  
E.S.  
A

DAY.	HOUR	POSITION.		Bar	Hyps-ometer	Dry Bulb	Wind Dir. True	Wind Force	Weather	CLOUD.		
		Lat.	Long.							Amount	Kind	Direction from upper lower
Aug 29	8.20			Max -17.2			Min -29°			Present		Screen
	4 pm			-17.5			-31			-30	Rain	N. Bay
Aug 30	4 pm			Max -6			-36			-28	S. Bay	
	4 pm			-2.2			-33			-28	Rain	
	3.15 pm			-22.3			-32.6			-25	N. Bay	
Aug 31	12.45 pm			-20			-28			-28	S. Bay	
	3.15 P.M.			-19.5			-27.5 -26.2			-26.2	N. Bay	
Sept. 2	8.15			-9.3			-32.0			-27.6	N. Bay	
Sept. 2	12.45			-6			-28			-19	S. Bay	
" 2	11.30 AM			-18.0			-32°			-32°	S. Bay	

# BRITISH ANTARCTIC EXPEDITION, 1910.

REMARKS.

OBSERVER'S INITIALS.

Heavis clouding over

E.L.

GT

S.L.A.

GT.

SE

S.L.A.

SE

S.L.A.

SE

S.L.A.

DAY.	HOUR	POSITION.		Bar Max.	Hyps- omet- er	Dry Bulb	Wind Dir. True	Wind Force	Weather Present	CLOUD.		
		Lat.	Long.							Amount	Kind	Direction from upper lower
Sept 2	5.25 pm.			-11.7		-33		-21.5			Ramp.	
Sept 3	1.0 P.M.			-25		-32.5		-28.5			N. Bay.	
—	Norm			-23°		-34.8		-27.5			S. Bay.	
Sept 4	4.20			-24.2°		-28		-25.2			N. Bay.	
Sept 5	8.20			-24.3°		-35.5°		-34			N. Bay.	
5	3 pm			-20.5		-39.0		-26			Ramp	
7	4			-1		-34		-3			Ramp	
8	3.30			-2		-22		-21			Ramp	
9	2.00 Pm			+15		-41		-20			Cape Royds	

# BRITISH ANTARCTIC EXPEDITION, 1910.

OBSERVER'S  
INITIALS.

## REMARKS.

Erebus smoke large & rising considerably.

Erebus completely obscured. Very strong mirage to NW. Power air gunner in pt.

Erebus completely obscured. Slight snow, heavy clouds to S (snowing)

\*Hals falling

A.C.G.

E.E.

G.T.

G.T.

DAY.	HOUR	POSITION.		Bar	Hypsomet- er	Dry Bulb	Wind Dir. True	Wind Force	Weather	CLOUD.		
		Lat.	Long.							Amount	Kind	Direction from upper lower
8 IX	4 pm			0°		-34.2°		-26.5°				S. Bay.
9 IX	11.30 AM			-20°		-25.5°		-22.0°				S. Bay.
9 IX	1 pm			-18°		-24.8°		-17.5°				Ramp. Saw.
10 IX	12.45 pm.			-19°		-26.5°		-22.5°				Ramp. Saw.
11 IX	5.20 pm			—		-43		-29				N Bay S. a
10 IX	11.0 am			-18.2		-26°		-22°				S Bay
11 IX	4.0 pm,			-17°		-41.8		-30				S Bay
"	5.15 pm			-18.5		-36.0		-28				Ramp
12 IX	11.30 am			-24.5		-32.7		-28.5				S Bay All.
	5.30 pm			—		-32		-9.2				N Bay S. a
13 IX	12.10 pm	↑		—		-32		-24				N Bay S. a.
	11.30 am	↓		-8.4		-31.5		-21				S Bay All.
	12.30 pm			-10.		-25.6		-17.3				Ramp. Saw.

# BRITISH ANTARCTIC EXPEDITION, 1910.

OBSERVER'S  
INITIALS.

## REMARKS.

E. NE airs.

Snowing - E. NE 1-2.

NE 1/2 airs - 1

DAY.	HOUR	POSITION.		Bar	Hyps- omet- er	Dry Bulb	Wind Dir. True	Wind Force	Weather	CLOUD.		
		Lat.	Long.							Amount	Kind	Direction from upper lower
				<u>Max</u>			<u>Min</u>		<u>Pres</u>			<u>Screen</u>
14 IX. 11	12.30 pm.			—			-32		-29			S Bay S.A.
14 IX. 11	5.30 pm.			-11.5			-29.6		-29.6			Ramp. Saw.
14 IX. 11	3.45 pm.			-9.2			-33		-26.5			S Bay All.
15 IX. 11	11.30 pm.			—			-41.2		-33			S Bay All.
15 IX. 11	noon pm.			—			-39		-35			N Bay S.A.
15 IX. 11	12.45 pm.			-23.6			-34.5		-27.5			Ramp. Saw.
16 IX. 11	12 noon						-35.5		-23			N Bay S.A.
16 IX. 11	11.30 am			-23.5			-37.7		-27.5			S Bay All.
16 IX. 11	12.45 pm.			-2.7			-27.3		-4.0			Ramp. Saw.
17 IX. 11	12.30 pm						-24		-9			N Bay S.A.
17 IX. 11	11.45 am			zero			-27		-3			S Bay All.
17 IX. 11	12.45 pm			+0.6			-11.0		-1.0			Ramp. Saw.
18 IX. 11	11.30 am.			+3			-20.0		-20.0			S Bay All.

# BRITISH ANTARCTIC EXPEDITION, 1910.

OBSERVER'S  
INITIALS.

## REMARKS.

N.E. 1-2 Present Temp. checked on both thermometers. Note diff. of about 20° on Ramp & on floor.

WIND N. 3.

Lt. NE by air.

DAY.	HOUR	POSITION.		Bar	Hyps- omet- er	Dry Bulb	Wind Dir. True	Wind Force	Weather	CLOUD.			BRITISH ANTARCTIC EXPEDITION, 1910.		OBSERVER'S INITIALS.
		Lat.	Long.							Amount	Kind	Direction from upper lower	REMARKS.		
				Max.			Min.		Pns.T.			Screen.			
18. ix. 11	12.45 p.m.			+3.7			-18.5		-13.0			Ramp. Saw	Calm.		
19. ix. 11	11.15 am						-24		-23.5			N Bay S/LA			
19. ix. 11	12.50 pm.			-5.8			-22.5		-21.0			Ramp	Calm.		
20. ix. 11	11.30 am.			-6.2			-9.7		-9.2			S. Bay. N/LA	Wind NW. 2-3.	Blizzard blowing on Erebus and at the Bluff.	
11. 11. 11	1 pm						-23		-13			N Bay S/LA			
20. ix. 11	12.55 pm			-0.6			-20.7		-8.5			Ramp. Saw	Calm.		
22. Sep 11	3.40 pm			+9			-9		-6			Ramp	Calm & Sunny	Erebus scarcely obscured.	G.T.
	5.10 pm						-14		-9			N Bay S/LA			
23. Sep. 11	8.20 am			+11.8			-16		-12			N Bay S/LA			
23. ix. 11.	4.45 pm.			+11.3			-13.2		-2.5			Ramp. Saw	Eastly wind 3.		
24. Sep 11	12.30 pm						-22		-14.8			N Bay S/LA			
24. ix. 11	12.55 pm.			+3.5			-22.5		-3.6			Ramp. Saw	Lt. Ely air.		
25. ix. 11	12.30 pm.						-15		-5			N Bay S/LA			
25. ix. 11	1 pm.			+0.9			-14		-3.5			Ramp. Saw	Snowing. Lt. NNEly air.		

DAY.	HOUR	POSITION.		Bar	Hyps- omet- er	Dry Bulb	Wind Dir. True	Wind Force	Weather	CLOUD.		
		Lat.	Long.							Amount	Kind	Direction from upper lower
29. ix. 11	4 pm			Max. +8.3			Min. -17.5		Pers. T. -3.7			Screen. Ramp saw
do.	4.45			+10.0			-16.0		-10.5			S. Bay Clarend
30. ix. 11	11.45 a.m.			+3.0			-15.0		+2.0			Ramp.
30. ix. 11	12 noon						-23		+4			N Bay S L A
1. x. 11	12 noon			(+10.6)			-9.2		+4.5			N Bay H R D
1. x. 11	Noon 45.			Hg in upper bulb.			-0.8		+11			Ramp saw
1. x. 11	12.30 pm						-6		-4			N Bay S L A
5. x. 11	12.45 pm.			+5			-7		+4.5			Ramp saw
8. x. 11	1 pm						-21		-4			N Bay S L A
8. x. 11.	5. P.M.			+10			-23		-6.5			Ramp saw
11. x. 11.	12.45 P.M.						-21		-11			N Bay S L A
12. x. 11	4.45 pm						-17		-3			N Bay S L A
12. x. 11	11 am.											S Bay S R W
12. x. 11	1 pm.											Ramp S A W

# BRITISH ANTARCTIC EXPEDITION, 1910.

OBSERVER'S

INITIALS.

## REMARKS.

Calm.

Calm

E. 4-5. No drift.

N. 2-3.

E. very light.

GT

DAY.	HOUR	POSITION.		Bar	Hyps- omet- er	Dry Bulb	Wind Dir. True	Wind Force	Weather	CLOUD.		
		Lat.	Long.							Amount	Kind	Direction from upper lower
14-X-11	3.30 pm				<u>Max</u>		<u>Min</u>		<u>Pres</u>			N Bay S.L.A.
16-X-11	12.45				+12.5		-13.0		-6.8			Ramp. c. 10 S.E.
17-X	11.0 AM				+12.4		-26.1		-12.0			S. Bay.
16-X-11	5.30 pm						-14		-8			N Bay S.L.A.

# BRITISH ANTARCTIC EXPEDITION, 1910.

REMARKS.

OBSERVER'S  
INITIALS.

DAY.

HOURLY

POSITION.

Lat.

Long.

Bar

Hyps-  
omet-  
er

Dry  
Bulb

Wind  
Dir.  
True

Wind  
Force

Weather

CLOUD.

Amount

Kind

Direction from  
upper lower

BRITISH ANTARCTIC EXPEDITION, 1910.

REMARKS.

OBSERVER'S  
INITIALS.

OBSERVER'S  
DAY.

HOUR

POSITION.

Lat.

Long.

Bar

Hyps-  
omet-  
erDry  
BulbWind  
Dir.  
TrueWind  
Force

Weather

CLOUD.

Amount

Kind

Direction from  
upper lower

BRITISH ANTAR

