



Met Office

Met Office 3-month Outlook

Period: April – June 2019 Issue date: 21.03.19

The forecast presented here is for April and the average of the April-May-June period for the United Kingdom as a whole. The forecast for April will be superseded by the long-range information on the public weather forecast web page (www.metoffice.gov.uk/public/weather/forecast/#?tab=regionalForecast), starting from 29 March 2019.

This forecast is based on information from observations, several numerical prediction systems and expert judgement.

SUMMARY – TEMPERATURE:

For April and April-May-June as a whole, above-average temperatures are more likely than below-average temperatures.

Overall, the probability that the UK-average temperature for April-May-June will fall into the coldest of our five categories is 5%, and the probability that it will fall into the warmest of our five categories is 45% (the 1981-2010 probability for each of these categories is 20%).

CONTEXT:

Weak El Niño conditions in the tropical Pacific Ocean are predicted to continue in the coming months. Nevertheless, the effect of this on weather patterns over the UK is likely to be small. Historically, El Niño slightly increases the likelihood of low-pressure patterns over Northern Europe, which would increase the chances of colder-than-average conditions for the UK during this 3-month period. Meanwhile, in the Atlantic Ocean, predicted patterns of tropical rainfall are consistent with moderately increased chances of above-average sea level pressure across Northern Europe. In addition, below-average sea surface temperatures in mid-latitudes increase the likelihood of high pressure across Northern Europe later in the

outlook period. During spring and early summer, high pressure is usually associated with warmer-than-average conditions. Furthermore, sea temperatures close to the UK are currently higher than normal, which increases the chances of above-average temperatures in April. For both April and April-May-June, the Met Office long-range prediction system, and systems from other centres around the world, shows small but consistent signals of an increase in the likelihood of high pressure. This, along with the tendency for higher UK temperatures seen in the last 10 years (see figure T2), leads to an increased chance of warmer-than-average conditions.

Fig T1

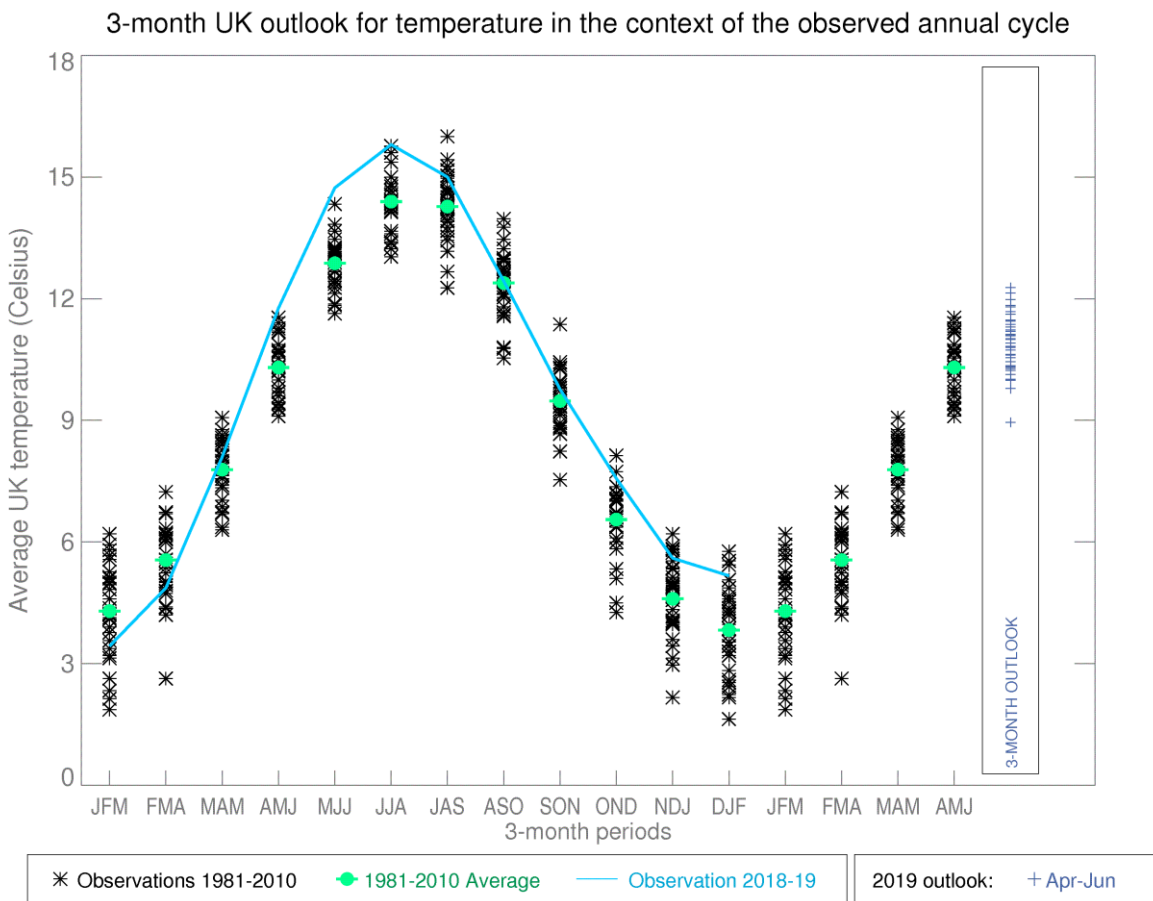


Fig T2

1-month and 3-month UK outlook for temperature in the context of observed climatology

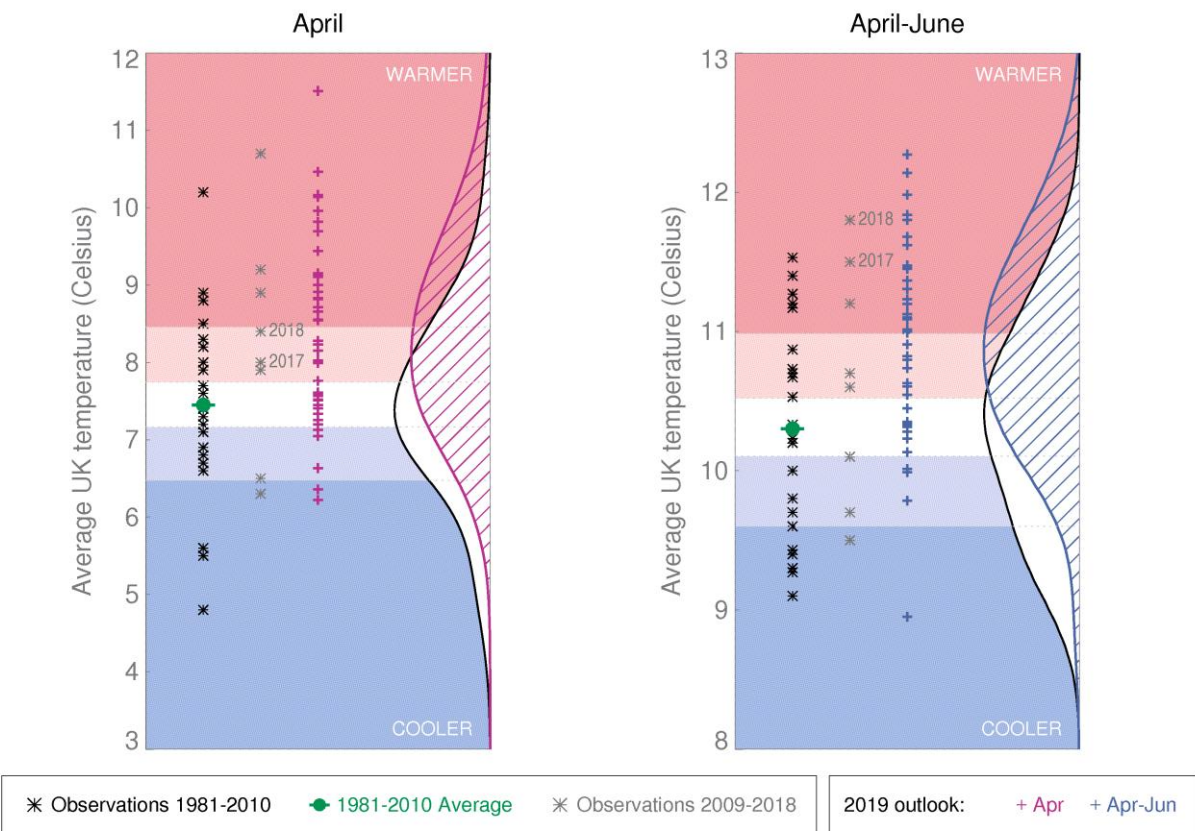
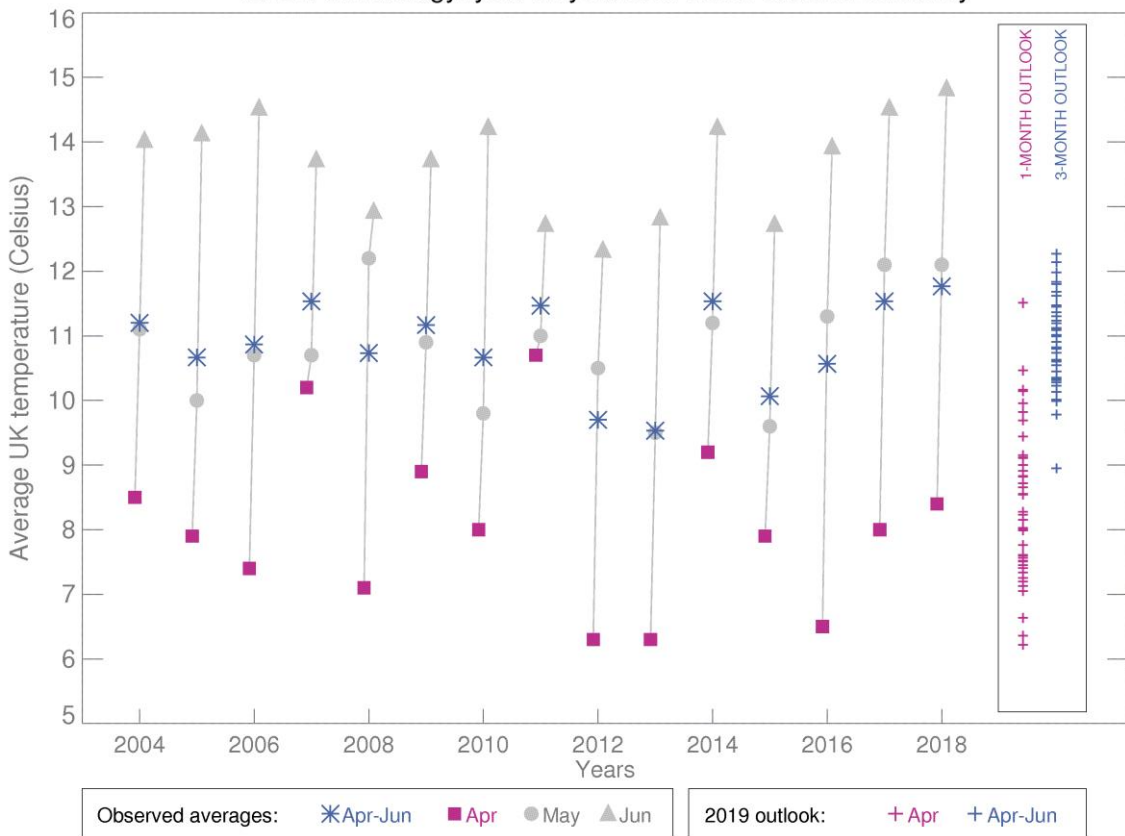


Fig T3

1-month and 3-month UK outlook for temperature in the context of recent climatology: year-to-year and within-season variability



This Outlook provides an indication of possible temperature and rainfall conditions over the next 3 months. It is part of a suite of forecasts designed for contingency planners. The Outlook should not be used in isolation but should be used with shorter-range and more detailed (30-day, 15-day and 1-to-7-day) forecasts and warnings available to the contingency planning community from the Met Office.