



Met Office

Met Office 3-month Outlook

Period: March – May 2019 Issue date: 21.02.19

The forecast presented here is for March and the average of the March-April-May period for the United Kingdom as a whole. The forecast for March will be superseded by the long-range information on the public weather forecast web page (www.metoffice.gov.uk/public/weather/forecast/#?tab=regionalForecast), starting from 1st March 2019.

This forecast is based on information from observations, several numerical prediction systems and expert judgement.

SUMMARY – PRECIPITATION:

For March, and March-April-May as a whole, the chances of above- and below-average precipitation are similar.

The probability that UK-average precipitation for March-April-May will fall into the driest of our five categories is around 20% and the probability that it will fall into the wettest of our five categories is between 20 and 25% (the 1981-2010 probability for each of these categories is 20%).

CONTEXT:

As discussed in the temperature section, for both March and March-April-May long-range prediction systems show a moderate increase in the probability of the positive phase of the North Atlantic Oscillation (NAO). This increases the likelihood of above-average precipitation. Nevertheless, some long-range prediction systems indicate an increased chance of high pressure to the south of the UK

in addition to a westerly tendency. This additional feature would act to decrease the chances of above-average rainfall, countering the effect of more frequent westerly winds. Taking these differences into account, the probabilities of above- and below-average precipitation are close to normal (see figure P2).

Fig P2

1-month and 3-month UK outlook for precipitation in the context of observed climatology

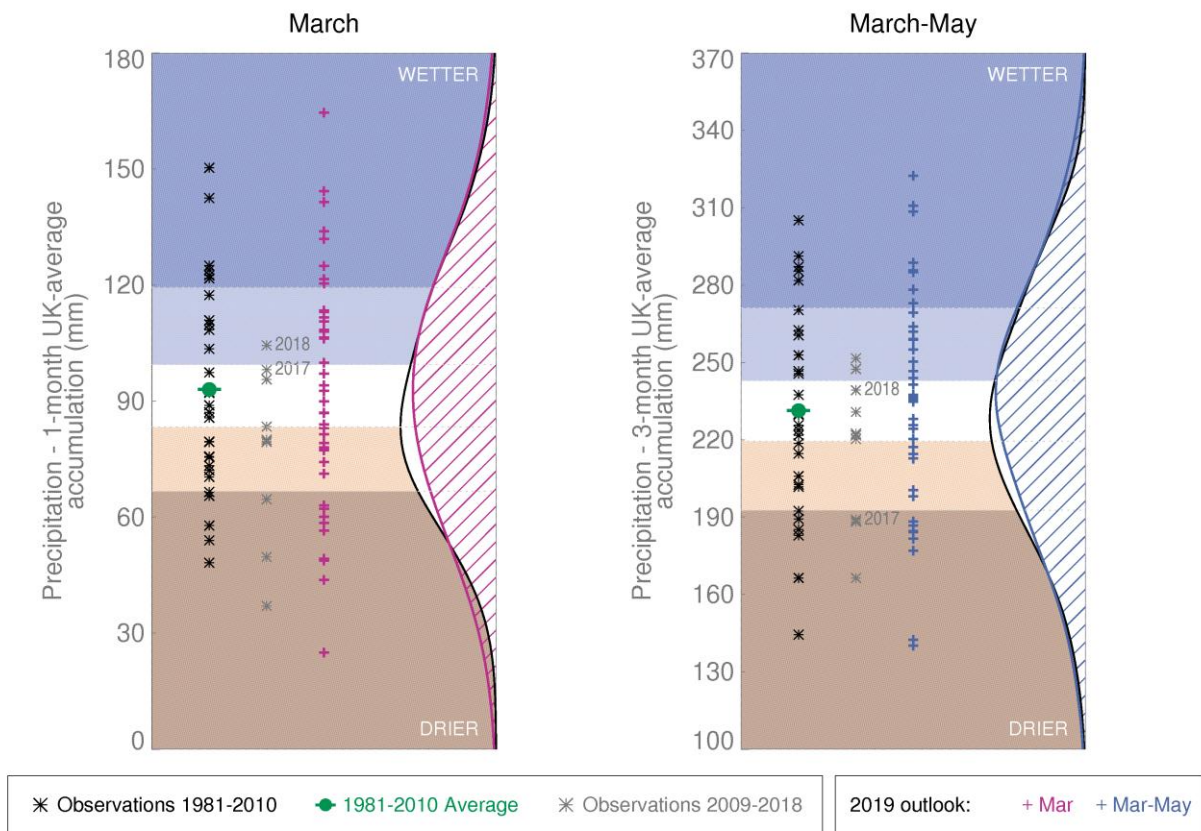


Fig P1

3-month UK outlook for precipitation in the context of the observed annual cycle

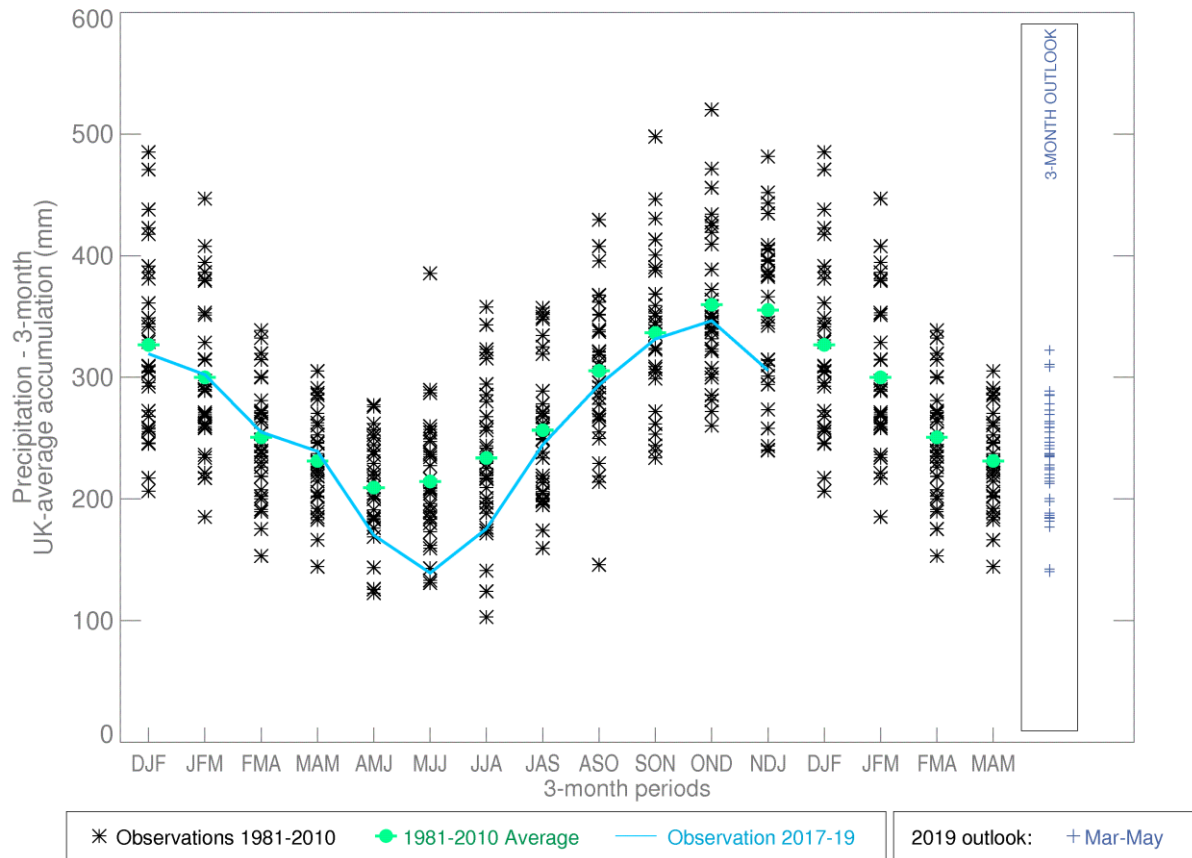
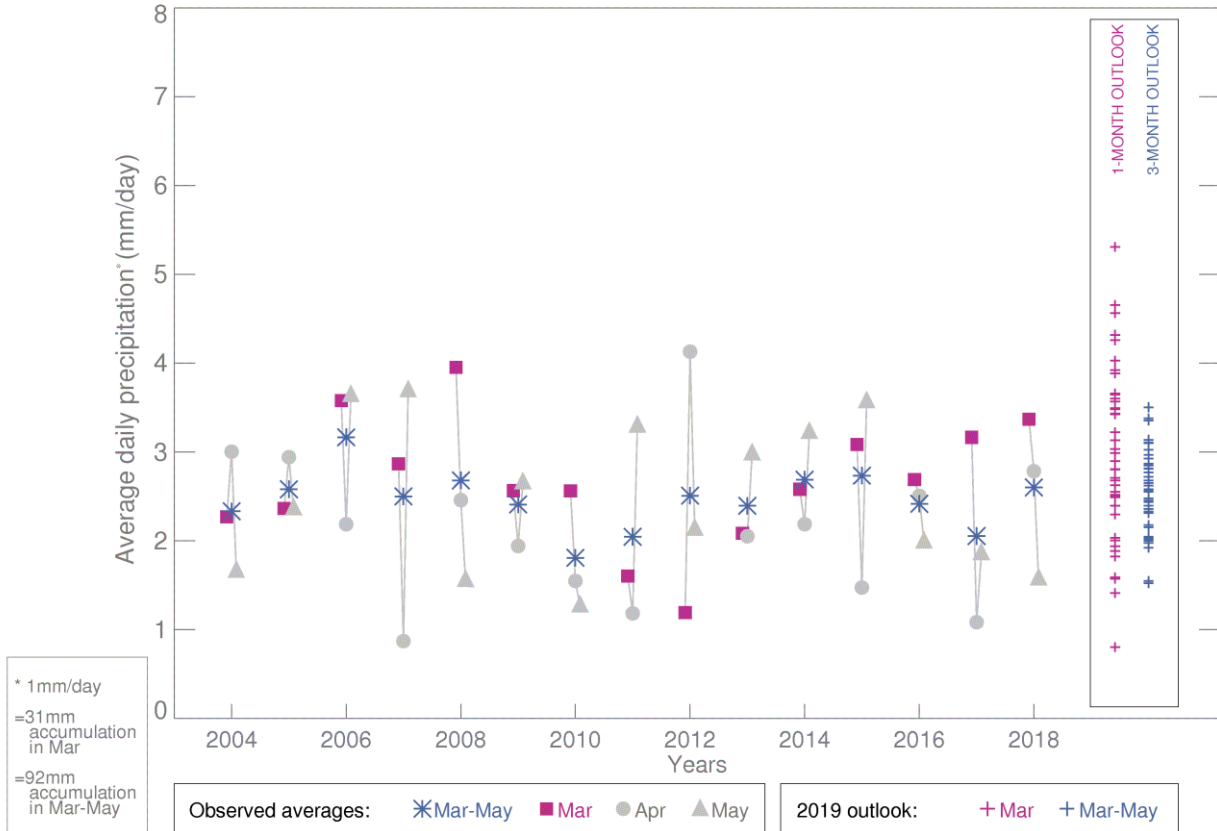


Fig P3

1-month and 3-month UK outlook for precipitation in the context of recent climatology: year-to-year and within-season variability



This Outlook provides an indication of possible temperature and rainfall conditions over the next 3 months. It is part of a suite of forecasts designed for contingency planners. The Outlook should not be used in isolation but should be used with shorter-range and more detailed (30-day, 15-day and 1-to-7-day) forecasts and warnings available to the contingency planning community from the Met Office.