

## Severe Weather Advisory for Bangladesh and Myanmar

### Severe Cyclonic Storm Mora

Issued on Monday, 29<sup>th</sup> May 2017 at 18:45 local time.

#### Headline

Severe Cyclonic Storm Mora is expected to intensify slightly more before making landfall near Chittagong, Bangladesh overnight (UK time). Primary hazard from the storm continues to be heavy rain and flooding.

#### Impacts

The main impact of the storm is expected to be torrential rain, with up to 500mm falling in 24-36hrs, bringing inevitable flash flooding; this amount of rain combined with a modest storm surge (1 to 1.5m) leads to the potential for significant coastal flooding.

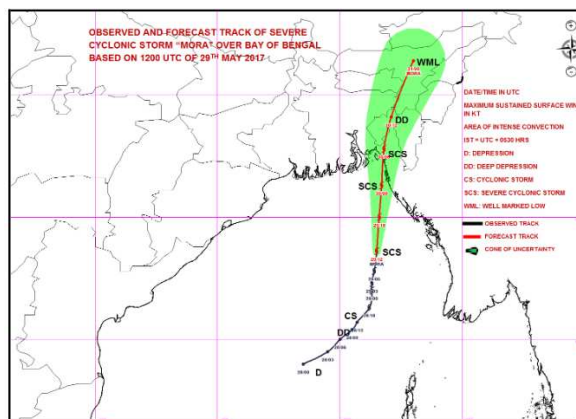
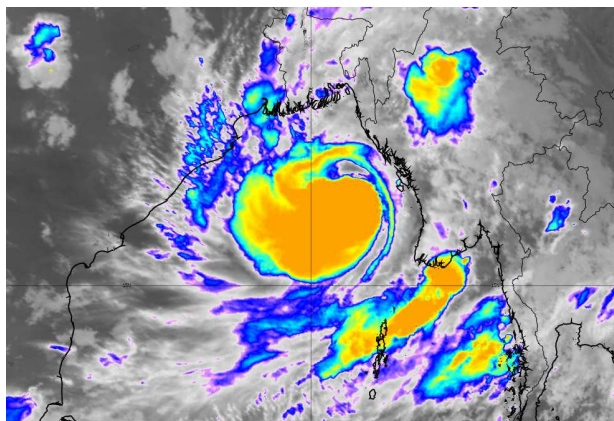
Whilst there is a risk of Mora reaching hurricane force, the system is not expected to be particularly intense and the radius of damaging winds is likely to be fairly small. Damaging storm force winds are possible, but are still considered to be of a lesser impact than the expected rainfall.

#### Discussion

A tropical storm – centred near 18N 92E at 1200UTC on 29<sup>th</sup> May in the Bay of Bengal – may intensify slightly more, whilst tracking north towards Bangladesh, making landfall early Tuesday (UK time) between the cities of Chittagong and Cox's Bazar.

Even at this short lead time, there remains some uncertainty with the precise track of the storm, although there is growing evidence to suggest this will be in SE Bangladesh rather than Myanmar. Regardless of the precise location of eventual landfall, torrential rain will affect a wide areas of SE Bangladesh and the far north of Myanmar. Flooding, aided by a modest storm surge remains the main hazard from this storm.

For comparison, the last tropical storm of similar magnitude to effect the region was Cyclonic Storm Akash in May 2007, which made landfall 115km south of Chittagong. Around 250 houses were reported as destroyed and there were 14 fatalities. No international response was required.



#### Sources

Met Office Global model and ensemble, ECMWF, Indian Met. Dept and NCEP.

**Issued at:** 291745Z      **Meteorologist:** Brent Walker      **Global Guidance Unit**

**This forecast may be amended at any time**

mailto: [GGU@metoffice.gov.uk](mailto:GGU@metoffice.gov.uk)

Phone Duty Forecaster, Global Guidance Unit (GGU), Operations Centre, Met Office, Fitzroy Road, Exeter  
VPN n6225 4319, BT 01392 884319

© Crown copyright 2017