



Met Office

Met Office 3-month Outlook

Period: December 2018 – February 2019 Issue date: 23.11.18

The forecast presented here is for December and the average of the December-January-February period for the United Kingdom as a whole. The forecast for December will be superseded by the long-range information on the public weather forecast web page (www.metoffice.gov.uk/public/weather/forecast/#?tab=regionalForecast), starting from 3rd December 2018.

This forecast is based on information from observations, several numerical prediction systems and expert judgement.

SUMMARY – PRECIPITATION:

For December and December-January-February as a whole, the chances of above- or below-average precipitation are approximately similar.

The probability that UK-average precipitation for December-January-February will fall into the driest of our five categories is between 20% and 25% and the probability that it will fall into the wettest of our five categories is between 20% and 25% (the 1981-2010 probability for each of these categories is 20%).

CONTEXT:

As discussed in the temperature section, signals for December from long-range prediction systems show a wide range of possible weather patterns. This is reflected in the left-hand graph of figure P2 which shows that the probabilities of above- and below-average precipitation are approximately equal.

For December-January-February as a whole, there is a moderate increase in the chances of a negative NAO pattern. Conventionally, this would be associated with an increase in the likelihood of a drier-

than-average winter in the UK, as moisture-bearing Atlantic depressions deviate towards Southern Europe. This winter, the extent of this deviation is predicted to be less extreme, however, with an increased likelihood of weather systems moving over France and giving precipitation over the southern half of the UK. This results in more balanced probabilities of above- and below- average precipitation for the UK overall (see right-hand graph of figure P2).

Fig P1

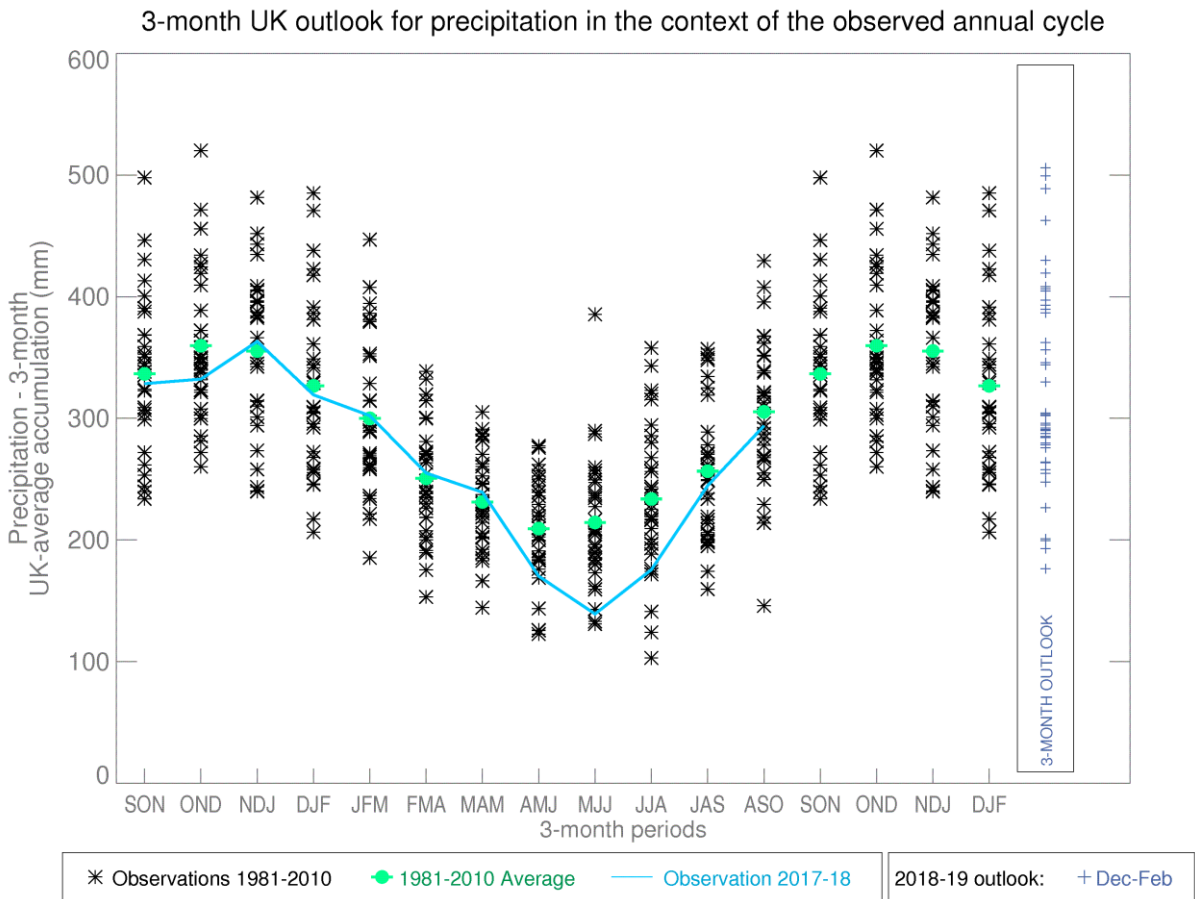


Fig P2

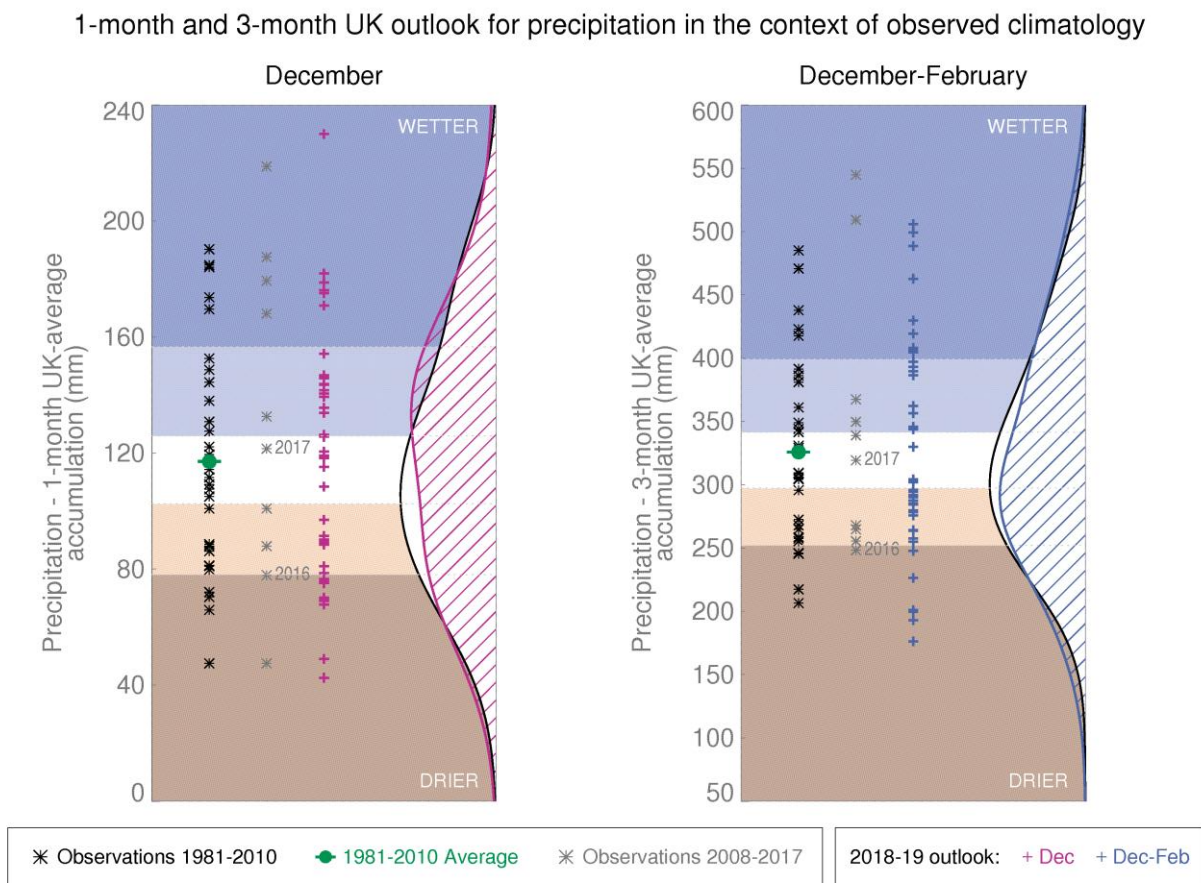
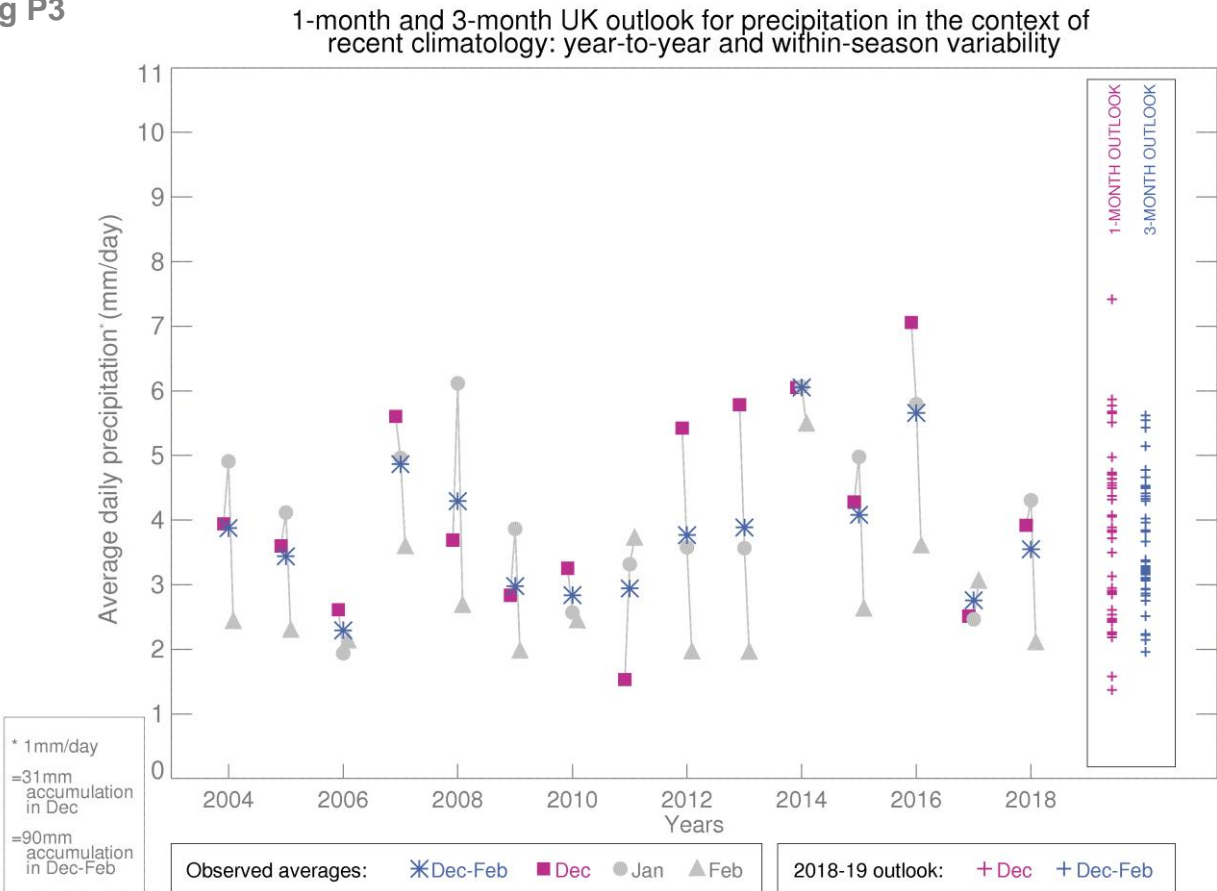


Fig P3



This Outlook provides an indication of possible temperature and rainfall conditions over the next 3 months. It is part of a suite of forecasts designed for contingency planners. The Outlook should not be used in isolation but should be used with shorter-range and more detailed (30-day, 15-day and 1-to-5-day) forecasts and warnings available to the contingency planning community from the Met Office.