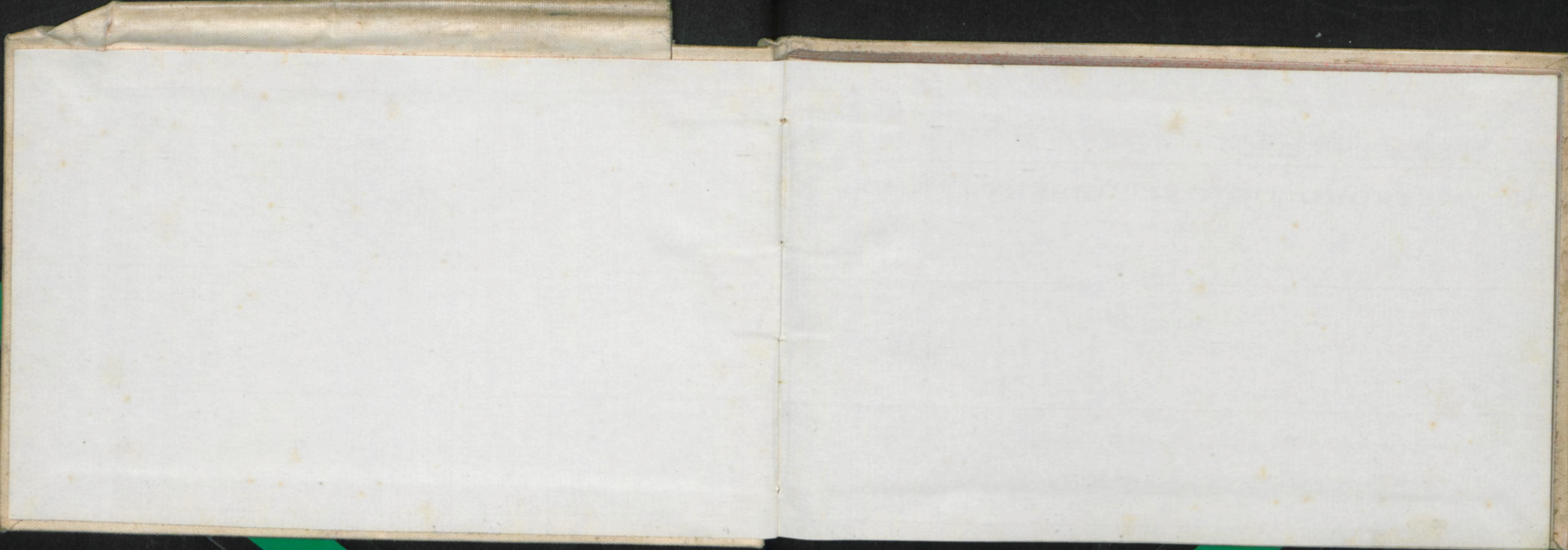


1912  
Rony I

OCT 31<sup>ST</sup> - DEC 23<sup>RD</sup> 1912  
B.A.E 37







BRITISH ANTARCTIC EXPEDITION 1845-46  
INSTRUMENTS IN USE, AND THEIR CORRECTIONS

METEOROLOGICAL OBSERVATIONS

TAKEN AT

Corrected  
Barometer

30.00 reduced to 29.7 at 0.00

During 19

Barometer

By

of

of

of

of

of

of

Height of Barometer Cistern above Mean Sea Level

Position of Station: Lat

Long



BRITISH ANTARCTIC EXPEDITION, 1910.

# METEOROLOGICAL OBSERVATIONS

TAKEN AT

During 19

By

Position of Station: Lat. \_\_\_\_\_ Long. \_\_\_\_\_

Height of Barometer Cistern above Mean Sea Level \_\_\_\_\_ feet.

## INSTRUMENTS IN USE, AND THEIR CORRECTIONS.

BAROMETER, No. 756 COMPARED WITH STANDARD at 1157 C. Evans in 19 12 Oct.

Correction  
required

-0.500 to reduce to 1157 at 0°C.									
----------------------------------	--	--	--	--	--	--	--	--	--

### THERMOMETERS

VII

Dry Bulb. No. ....

Max. in Shade. No. ....

Min. in Shade. No. ....

Max. in Sun. No. ....

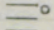
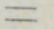
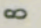


Min. on Snow. No. ....

No. ....

No. ....

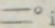


# WEATHER.—Initials of the Beaufort Notation and Symbols adopted by international agreement for recording phenomena of weather.

b.	blue sky	r.	● rain.	~	glazed frost.
c.	detached clouds.	p.	passing showers.		
o.	overcast.	d.	drizzling rain.	☙	gale.
m.	 mist.	e.	wet air without rain falling.	q.	squally.
f.	 fog.	s.	* snow.		
g.	gloomy.	+	snow drift.	○	solar corona.
u.	ugly, threatening.	⊠	snow lying.*	⊕	solar halo.
z.	 dust haze or smoke.	←	ice crystals.	☾	lunar corona.
v.	unusual visibility.	h.	▲ hail.	☾	lunar halo.
t.	⊥ thunder.	Δ	soft-hail.		
l.	< lightning.	w.	 dew.	☾	rainbow.
⌘	thunderstorm.	x.	 hoar frost.	☾	aurora.
		V	silver-thaw. rime.		

\* More than half the country in sight round the station covered with snow.

NOTE.—Do not use "h" for haze, nor "sh" for showers.

A line under an initial or the exponent "2," appended to a symbol, denotes intensity thus h or ▲<sup>2</sup> indicates heavy hail,  indicates light fog or mist.

## BEAUFORT WIND SCALE.

Beaufort Number.	Description of Wind.	Equivalent velocity in miles per hour.
0	Calm.	0
1	} Light Breeze.	2
2		5
3		10
4	} Moderate Breeze.	15
5		21
6	} Strong Wind.	27
7		35
8		42
9	} Gale forces.	50
10		59
11	} Storm forces.	68
12		above 75
	Hurricane.	



# INSTRUCTIONS.

**Barometer.**—The aneroid barometer should be lightly tapped before taking a reading.

**Hypsometer.**—Only pure water obtained from snow to be used. No water should be allowed to splash into the bulb of the thermometer during an observation.

**Thermometer.**—The aluminium sling thermometer should be allowed to remain in the open for at least ten minutes before a reading is taken in order that the bulb may acquire a temperature near that of the air. When an observation is to be made the thermometer should be opened and swung for a minute; the swinging must then be repeated until three readings have been obtained, each giving the same temperature. The final steady reading should then be entered in the note book.

**Wind.**—All wind directions must be "true" and not "magnetic."

**Clouds.**—The proportion of the sky covered by cloud should be indicated on a numerical scale running from 0, cloudless, to 10, completely overcast. The numbers given are to refer solely to the amount of the sky covered and not to the density, height or other quality of the cloud. Fog must be regarded as a cloud at ground level, and 10 must accordingly be entered for the amount of cloud on foggy days. If clouds can be seen through a thin mist, the amount of real cloud should be entered in the column and a note made under "Remarks."

## BRITISH ANTARCTIC EXPEDITION, 1910.

### REMARKS.

The following are the chief cloud forms:

Cirrus	...	(Ci)	...	} High.
Cirro-Stratus	...	(Ci-St)	...	
Cirro-Cumulus	...	(Ci-Cu)	...	
Alto-Cumulus	...	(A-Cu)	...	
Alto-Stratus	...	(A-St)	...	} Low.
Strato-Cumulus	...	(St-Cu)	...	
Cumulus	...	(Cu)	...	
Stratus	...	(St)	...	
Nimbus	...	(Nb)	...	

Enter cloud directions as you would wind directions, *i.e.*, the direction from which they are coming.

**Weather.**—The Beaufort notation given on page 3 should be used.

**Remarks.**—Haloes and any unusual phenomena should be noted. It is also desirable that general topographical notes should be added, as for instance, "In valley running N.W.," "To-day's camp higher than yesterday's," etc.







DAY.	HOUR	POSITION		Bar	Hyps- omet- er	Dry Bulb	Wind Dir. True	Wind Force	Weather	CLOUD		
		Lat.	Long.							Amount	Kind	Direction from upper lower
Oct 31	4.0			29.115		-5.0			light air	10		
	19 hrs.			29.165		-4.2			light air	10	*	
Nov 1	0.30			29.178		-2.5			do	10	st *	
do	6.00	0 87	30	29.245		(2)			do	9	st.	
					19.30	-11.0						
	19.30			29.260	20.30	-16.5	mi.	-14.0	do	0		
Nov 2	1.0			29.22		-22.5			do	Co st 8		

# BRITISH ANTARCTIC EXPEDITION, 1910.

REMARKS.

OBSERVER'S  
INITIALS.

Very slightly snowing during day & wind force 4-5

Slightly snowing Rotten light

Clearing

Overcasting very quick



DAY.	HOUR	POSITION.		Bar	Hyps- omet- er	Dry Bulb	Wind Dir. True	Wind Force	Weather	CLOUD.		
		Lat.	Long.							Amount	Kind	Direction from upper lower
Nov 2	9 1/2	Corned.		29.12		-16	light	W		3	St.	
— 2	19.30	do		29.105		-15	S	2-3	0	10	St.	
— 3	0.45	7 <sup>th</sup>		29.165		-30	S	4	0	10	St.	
— 3	8.0	11 <sup>th</sup> Den. Camp		29.24		-16	S	7-8	—	0		
3.	19.0	Den. Camp		29.415	-11	-6		6	+	3	St.	
4.	1.15	lunch		29.465		-6		5	+	10	St.	

# BRITISH ANTARCTIC EXPEDITION, 1910.

REMARKS.

OBSERVER'S  
INITIALS.

During the interval considerable sun at times.

few flakes of snow Past S100W.  
Slight surf

Mod. Surf

During day heavy surf

Slight surf



DAY.	HOUR	POSITION.		Bar	Hyps- omet- er	Dry Bulb	Wind Dir. True	Wind Force	Weather	CLOUD.		
		Lat.	Long.							Amount	Kind	Direction from upper lower

Therm VI  
used hereafter  
but same bar

# BRITISH ANTARCTIC EXPEDITION, 1910.

REMARKS.

OBSERVER'S  
INITIALS.



DAY.	HOUR	POSITION.		Bar	Hyps- omet- er	Dry Bulb	Wind Dir. True	Wind Force	Weather	CLOUD.		
		Lat.	Long.							Amount	Kind	Direction from upper lower
Dec 9.	14.25			29.105		31.0	Hair.	1.		3	Bd Sh	+ Cu.
	15.00			28.525						7	do	
	20.30			29.08	+ 21.5		L <sup>+</sup> S	Bd Sh.		2	Cu.	
Dec 10	8.15			29.07		25.0	St S	Hair.		9	St	
	12.15			29.205			N	2-3		8	As <sup>+</sup> /St	
	14.50			29.295								
	20.00			29.130		28.00	N	20 <sup>+</sup> -15 <sup>+</sup>		7	As <sup>+</sup>	
Dec 11	8.00			29.02-			N	15 <sup>m</sup>		10	St	

# BRITISH ANTARCTIC EXPEDITION, 1910.

OBSERVER'S  
INITIALS.

## REMARKS.

1700 ft. Camp. in C. Barne moraine  
2270

+ 127 min

Camp above C. Royds

Cape Royds Hut

Camp above C. Royds

+ 22.5 min

Camp above C. Royds

C. Royds Hut

1660 } 680 ft Δ level.  
665 ft. back

670 ft



DAY.	HOUR	POSITION.		Bar	Hyps- omet- er	Dry Bulb	Wind Dir. True	Wind Force	Weather	CLOUD.	
		Lat.	Long.							Amount	Kind
Dec 12	9.15			29.53	+	29.0	N.	20 <sup>m</sup>		2	asl
	13.30			29.49		31.5	N.	10-15 <sup>m</sup>		8	asl
	20.30			29.48		26.5	S.	15-20 <sup>m</sup>		1	asl
Dec 13	9.0			29.58		27.0	W	10 <sup>m</sup>		3	Derst - asl
	20.30			29.59		29.5	S	10 <sup>m</sup>		7	asl
Dec 14	14.30			29.50		27.0	S	20-25 <sup>m</sup>	*	10	st
Dec 15	8.10			29.38		27.5	S	10		9	asl
	21.30			29.36		25.1	lt air	5 <sup>m</sup>		8	asl
Dec 16	8.30 AM			29.37		27.4	S	35 <sup>m</sup>		10	st

BRITISH ANTARCTIC EXPEDITION, 1910.										OBSERVER'S INITIALS.	
REMARKS.											
22.3 min.											
22.0 min. Slight snowing.											
24.0 min. do											



DAY.	HOUR	POSITION.		Bar	Hyps- omet- er	Dry Bulb	Wind Dir. True	Wind Force	Weather	CLOUD.		
		Lat.	Long.							Amount	Kind	Direction from upper lower
Dec 16	60 <sup>P</sup>	P. Royds.		29.35		+28.0	SE	25 <sup>m</sup>		9	Sh.	
	17 9.0 A	do		29.29		+27.5	SE	20 <sup>m</sup>		10	St	
	12.30	do		29.37		21.5	SE	20		10	St*	
Dec 18	7.30	do		29.50		24.5	N.	0-5	*	10	St	
	20.30	do		29.46		26.5	N	15-20		23	St (H)	
Dec 19	9.0	do		29.53		28.0	N	15 <sup>m</sup>		0	—	
	13.0	do		29.55		29.5	N	15 <sup>m</sup>		0	—	
	20.0	do		29.60		30.0	N	etavia		10	Cist	Et. Smoke - N. W.
Dec 20	9.0	do		29.645		28.8	NW	etavia		0	—	
	14.0	do		29.65		29	NW	10 <sup>m</sup>		0	—	
	20.10	do		29.675		29.2	NW	10-15 <sup>m</sup>		3	Gst	

# BRITISH ANTARCTIC EXPEDITION, 1910.

OBSERVER'S  
INITIALS.

## REMARKS.

+22° 8' Min. 4" \* fell with some wind during Pk  
Started to snow 10 hrs. very soft drifts in lee of all  
peaks.

Min 19°

{ Pack on Horizon

Min 23.

Strong drift of loose ice from N.

Pack closing in loose stuff level with Horseshoe Bay. Little SW

Min 27.5 Pack closing in } Et Smoke - N.

Strong N drift much ice  
now rounded







DAY.	HOUR	POSITION.		Bar	Hyps- omet- er	Dry Bulb	Wind Dir. True	Wind Force	Weather	CLOUD.			
		Lat.	Long.							Amount	Kind	Direction from upper lower	

# BRITISH ANTARCTIC EXPEDITION, 1910.

OBSERVER'S  
INITIALS.

REMARKS.



DAY.	HOUR	POSITION.		Bar	Hyps- omet- er	Dry Bulb	Wind Dir. True	Wind Force	Weather	CLOUD.			
		Lat.	Long.							Amount	Kind	Direction from upper lower	

# BRITISH ANTARCTIC EXPEDITION, 1910.

REMARKS.

OBSERVER'S  
INITIALS.







[illegible]

QUO







