

The forecast presented here is for December and the average of the December-January-February period for the United Kingdom as a whole. The forecast for December will be superseded by the long-range information on the public weather forecast web page (www.metoffice.gov.uk/public/weather/forecast/#?tab=regionalForecast), starting from 30 November 2014.

This forecast is based on information from observations, several numerical models and expert judgement.

SUMMARY - PRECIPITATION:

Latest predictions for UK-mean precipitation favour near-to or above-average rainfall for December and for the December-January-February period as a whole.

The probability that UK precipitation for December-January-February will fall into the driest of our five categories is between 10% and 15% and the probability that it will fall into the wettest category is around 25% (the 1981-2010 probability for each of these categories is 20%).

CONTEXT:

As already mentioned in the temperature section, there is a consistent signal from computer models for a positive phase of the North Atlantic Oscillation (NAO), at least during the first half of this winter period. In a positive phase of the NAO, precipitation is more likely to be above average than below average. Although above-average precipitation is favoured, uncertainty is still large; this is highlighted in figure P2, where there is a broad range of outcomes, but also a clear shift

towards more likely wetter than average conditions. The atmospheric patterns which favour above-average precipitation also tend to increase the frequency of cyclonic weather systems crossing the UK and thus spells of wet and windy weather may be more frequent than is typical, particularly in the early and middle parts of the winter period. However there is only a small chance of winter precipitation reaching the values seen during winter 2013-14.

Fig P1 3-month UK outlook for precipitation in the context of the observed annual cycle

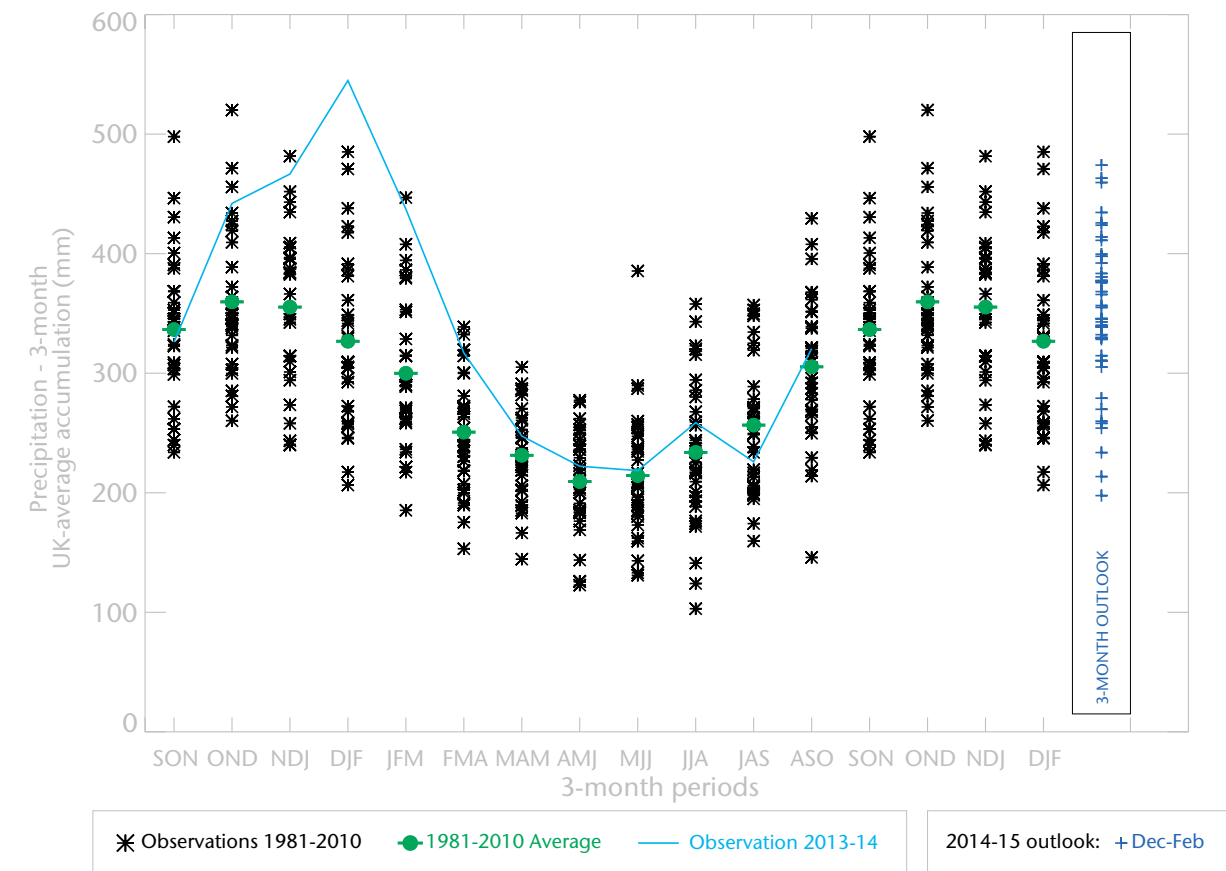


Fig P2 1-month and 3-month UK outlook for precipitation in the context of observed climatology

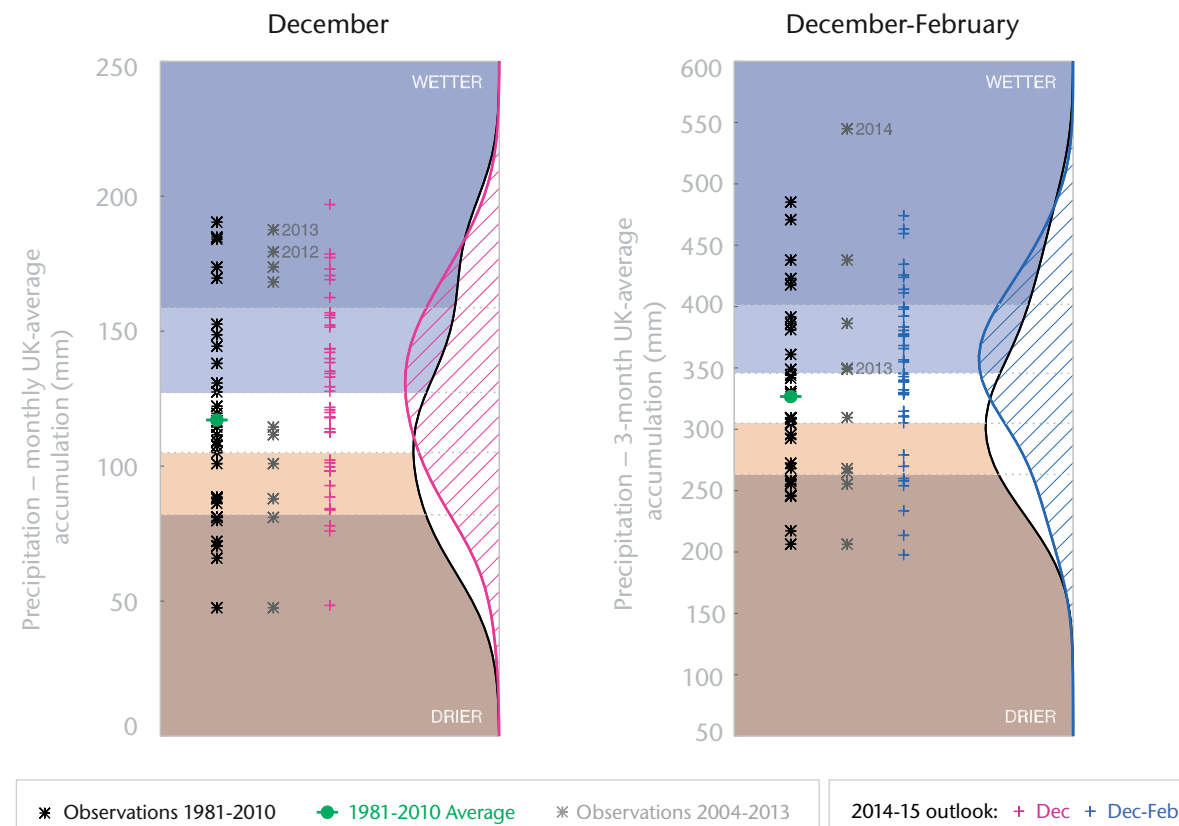
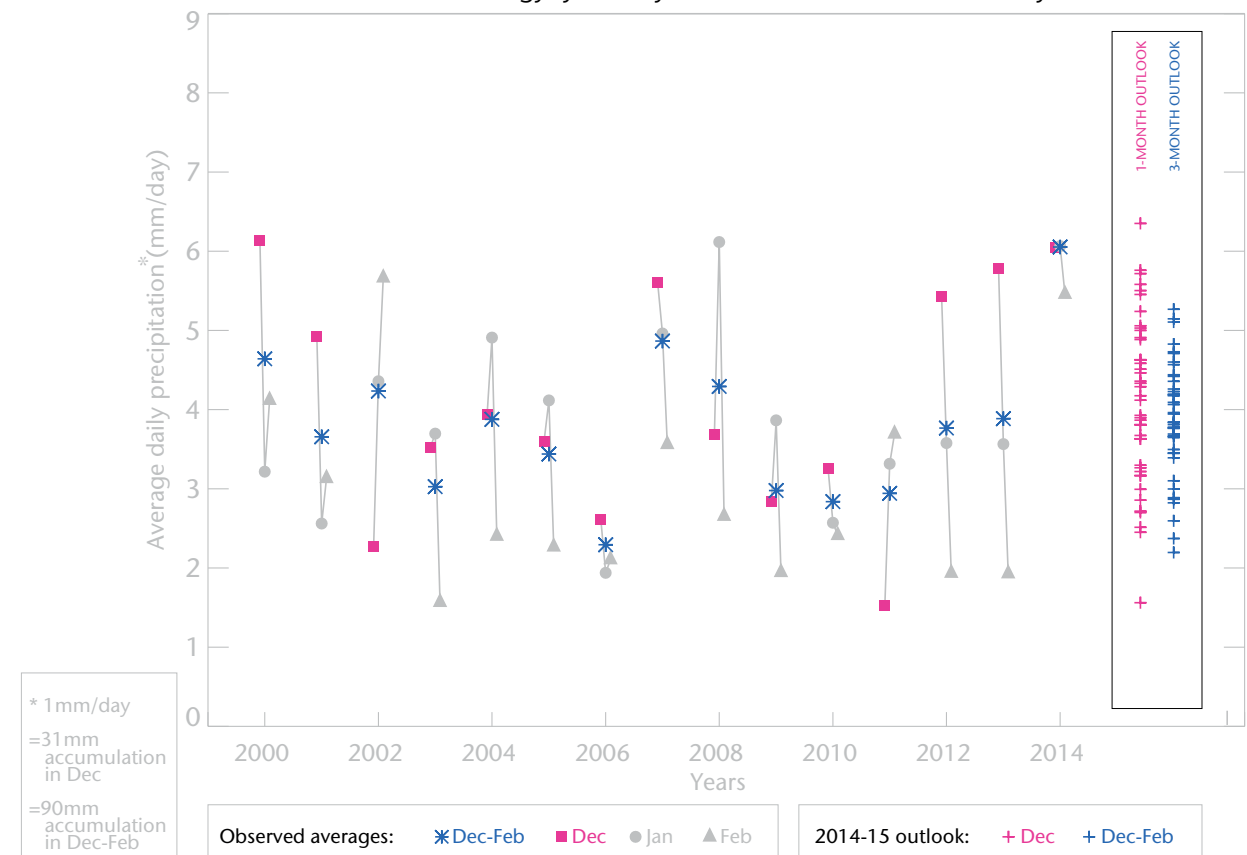


Fig P3 1-month and 3-month UK outlook for precipitation in the context of recent climatology: year-to-year and within-season variability



This Outlook provides an indication of possible temperature and rainfall conditions over the next 3 months. It is part of a suite of forecasts designed for contingency planners. The Outlook should not be used in isolation but should be used with shorter-range and more detailed (30-day, 15-day and 1-to-5-day) forecasts and warnings available to the contingency planning community from the Met Office.