



Met Office

Met Office 3-month Outlook

Period: November 2017 –January 2018 Issue date: 26.10.17

The forecast presented here is for November and the average of the November-December-January period for the United Kingdom as a whole. The forecast for November will be superseded by the long-range information on the public weather forecast web page (www.metoffice.gov.uk/public/weather/forecast/#?tab=regionalForecast), starting from 6 November 2017.

This forecast is based on information from observations, several numerical prediction systems and expert judgement.

SUMMARY – PRECIPITATION:

For November and November-December-January above-average precipitation is considered more probable than below-average precipitation.

The probability that UK-average precipitation for November-December-January will fall into the driest of our five categories is around 15% and the probability that it will fall into the wettest of our five categories is between 25% and 30% (the 1981-2010 probability for each of these categories is 20%).

CONTEXT:

Autumn is a season when it is usual for Atlantic depressions to become more intense. These systems bring large amounts of moisture, often making it one of the stormiest and wettest parts of the year (see figure P1). As discussed in the temperature section, signals from the Met Office long-range prediction system and other systems from prediction centres around the world broadly show an increased likelihood of westerly or cyclonic weather patterns during the outlook period. Some systems suggest a greater likelihood of high-pressure patterns over the North Atlantic Ocean, however, and there are global factors

that favour weather patterns bringing colder and drier weather (see temperature section). Overall, the outlook for both November and November-December-January shows slightly increased chances of above-average rainfall compared to normal (see figure P2). The outlook also implies that the risk of impacts from high rainfall and strong winds is moderately greater than usual. Despite this, the likelihood of dry conditions, of concern for some parts of the UK following last winter's low rainfall, remains only slightly less than normal.

Fig P2

1-month and 3-month UK outlook for precipitation in the context of observed climatology

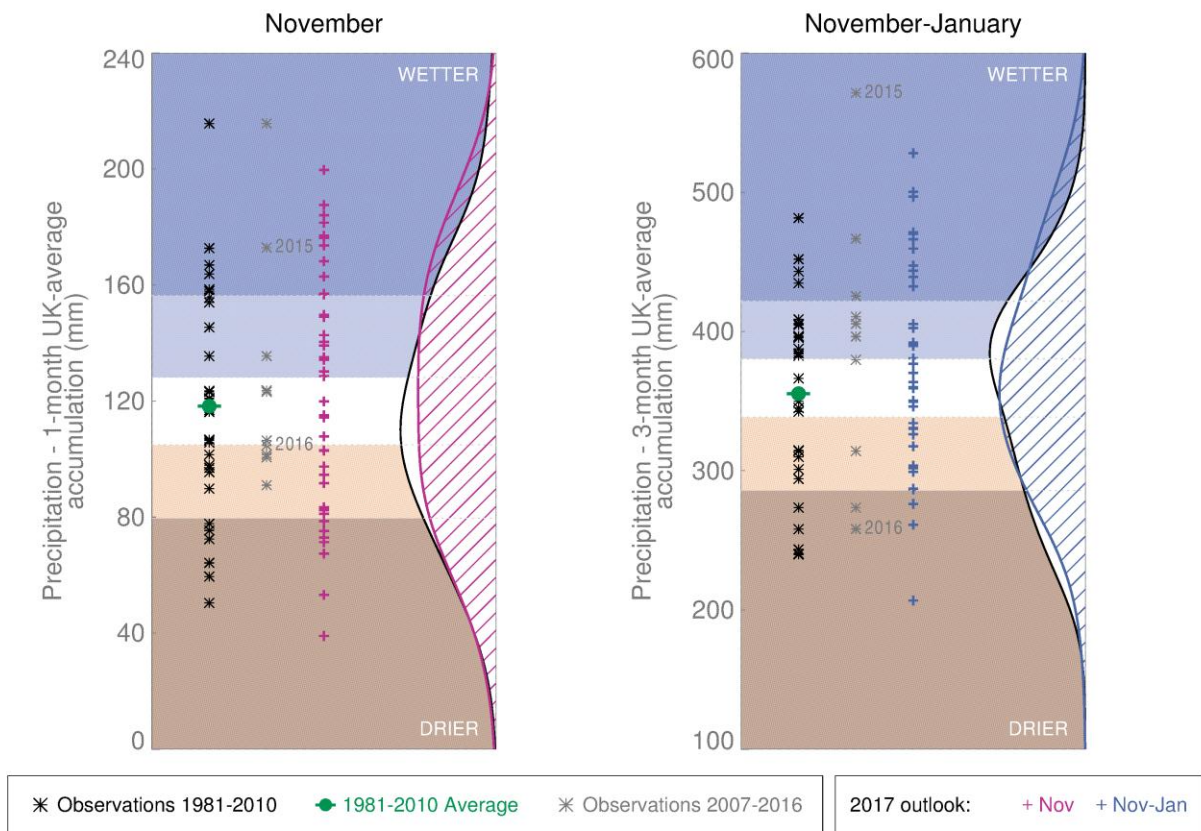


Fig P1

3-month UK outlook for precipitation in the context of the observed annual cycle

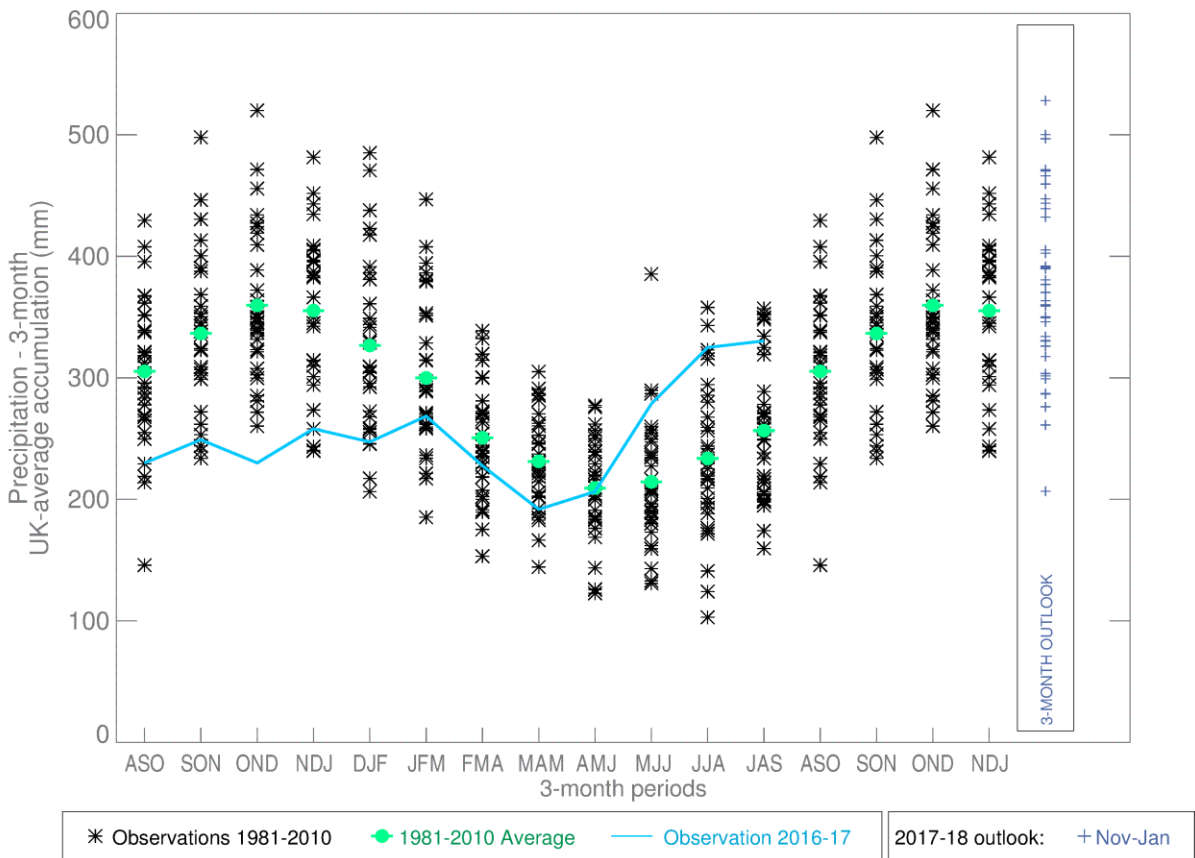
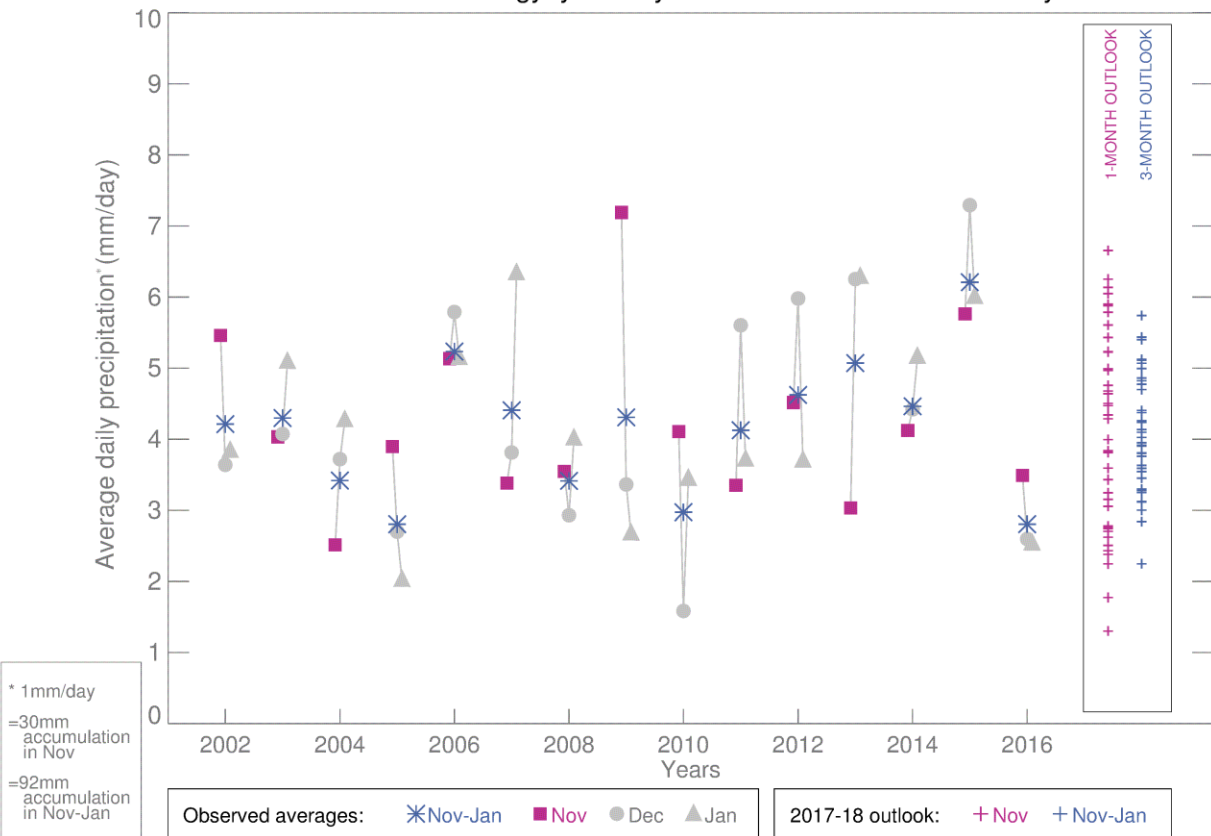


Fig P3

1-month and 3-month UK outlook for precipitation in the context of recent climatology: year-to-year and within-season variability



This Outlook provides an indication of possible temperature and rainfall conditions over the next 3 months. It is part of a suite of forecasts designed for contingency planners. The Outlook should not be used in isolation but should be used with shorter-range and more detailed (30-day, 15-day and 1-to-5-day) forecasts and warnings available to the contingency planning community from the Met Office.