



Met Office

# Met Office 3-month Outlook

Period: June – August 2017 Issue date: 25.05.17

The forecast presented here is for June and the average of the June-July-August period for the United Kingdom as a whole. The forecast for June will be superseded by the long-range information on the public weather forecast web page ([www.metoffice.gov.uk/public/weather/forecast/#?tab=regionalForecast](http://www.metoffice.gov.uk/public/weather/forecast/#?tab=regionalForecast)), starting from 2 June 2017.

This forecast is based on information from observations, several numerical forecast systems and expert judgement.

## SUMMARY – PRECIPITATION:

For June, above-average precipitation is moderately more likely than below-average precipitation. For June-July-August the chances of above- and below-average precipitation are fairly balanced.

The probability that UK-average precipitation for June-July-August will fall into the driest of our five categories is between 15% and 20% and the probability that it will fall into the wettest of our five categories is around 20% (the 1981-2010 probability for each of these categories is 20%).

## CONTEXT:

Climatologically, June-July-August is wetter than late spring (see figure P1). The season is characterised by more localised convective rainfall than in autumn and winter when large-scale storm systems are more prevalent.

For June, long-range prediction systems suggest that on balance there is likely to be slightly more influence on the UK from low pressure systems from the North Atlantic than from high pressure systems. This leads to a moderately increased chance of wetter-than-average conditions compared to normal (see the left-hand graph of figure P2).

For June-July-August, the Met Office long-range prediction system, and systems from other centres around the world, shows only small changes in the chances of wetter- and drier-than-average conditions. This can be seen in the right-hand graph in figure P2 which shows that this year's probability (hatched) only deviates a little from the probability based on past climate (in black). This balanced outlook implies there remains a normal chance of drier-than-average conditions, which would exacerbate the large rainfall deficits that have accrued in some parts of the country since last autumn.

Fig P1

3-month UK outlook for precipitation in the context of the observed annual cycle

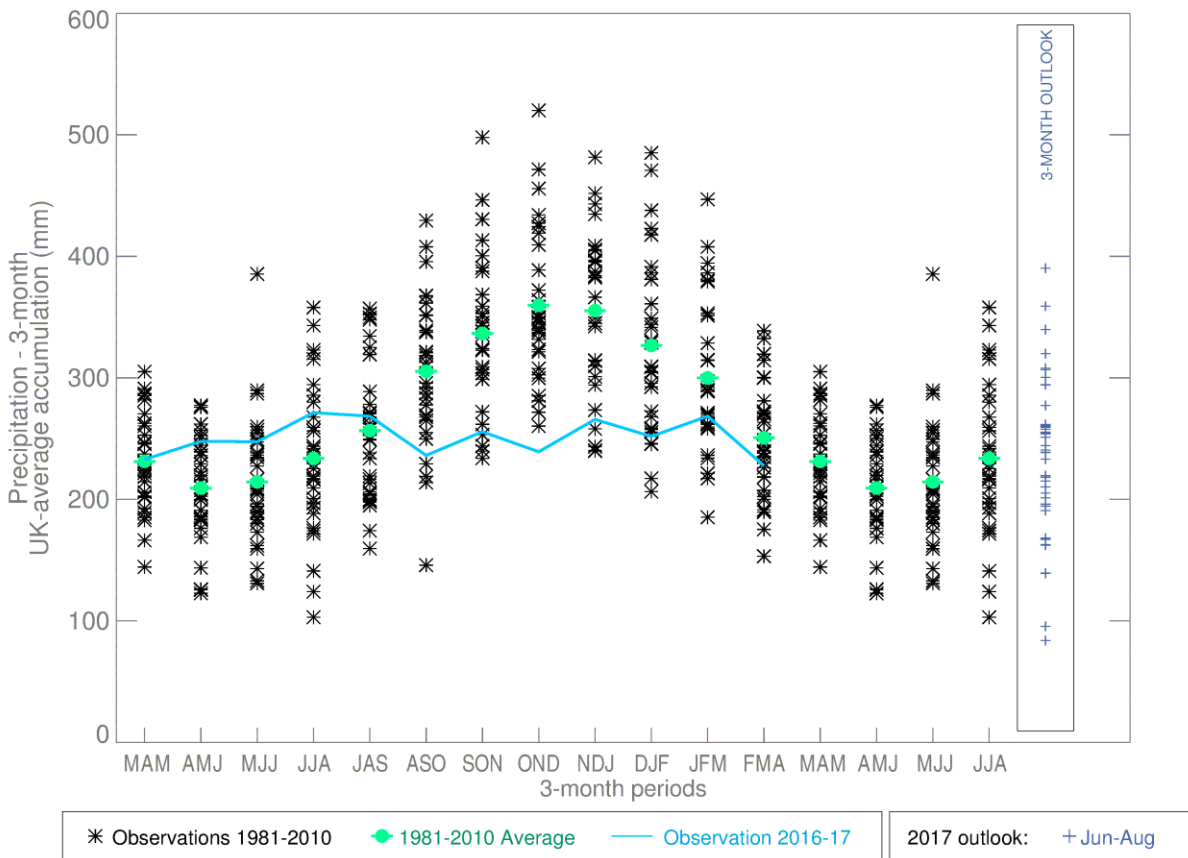


Fig P2

1-month and 3-month UK outlook for precipitation in the context of observed climatology

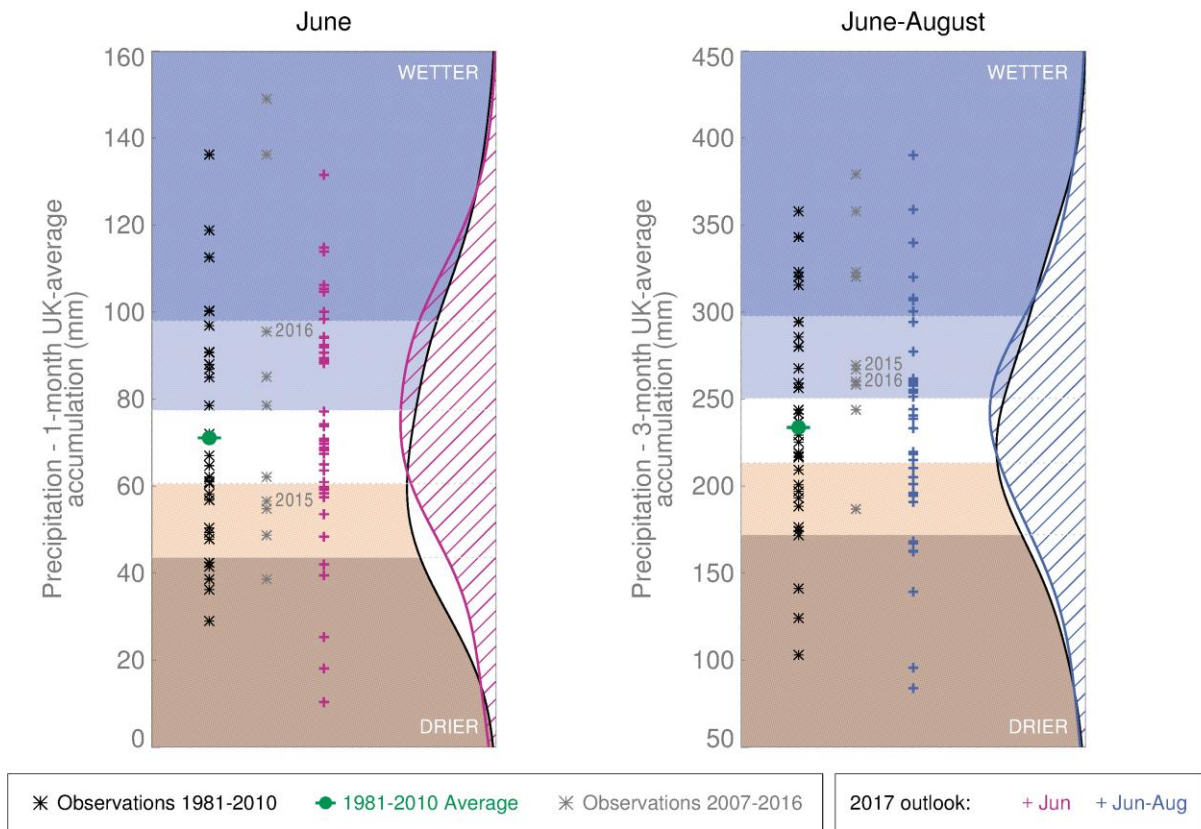
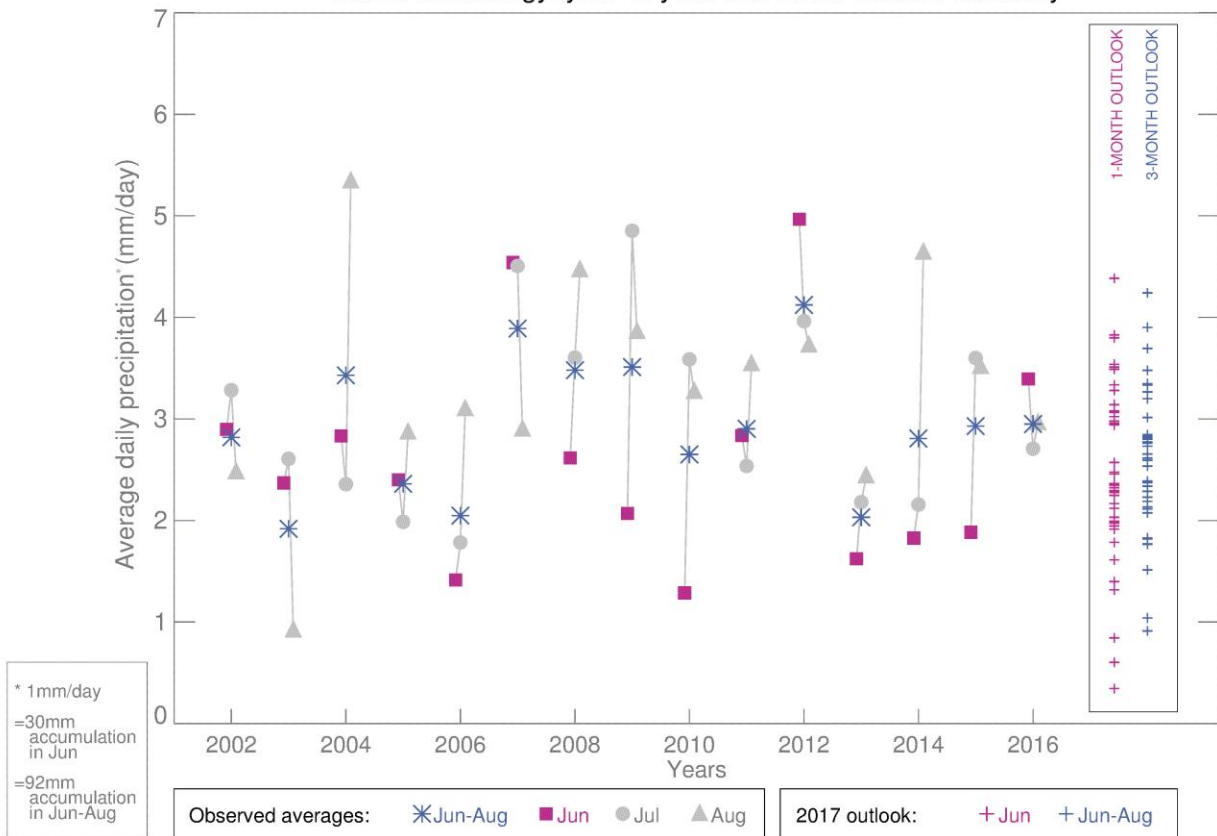


Fig P3

1-month and 3-month UK outlook for precipitation in the context of recent climatology: year-to-year and within-season variability



This Outlook provides an indication of possible temperature and rainfall conditions over the next 3 months. It is part of a suite of forecasts designed for contingency planners. The Outlook should not be used in isolation but should be used with shorter-range and more detailed (30-day, 15-day and 1-to-5-day) forecasts and warnings available to the contingency planning community from the Met Office.