



Met Office

# Met Office 3-month Outlook

Period: June – August 2018 Issue date: 24.05.18

The forecast presented here is for June and the average of the June-July-August period for the United Kingdom as a whole. The forecast for June will be superseded by the long-range information on the public weather forecast web page ([www.metoffice.gov.uk/public/weather/forecast/#?tab=regionalForecast](http://www.metoffice.gov.uk/public/weather/forecast/#?tab=regionalForecast)), starting from 4 June 2018.

This forecast is based on information from observations, several numerical prediction systems and expert judgement.

## SUMMARY – PRECIPITATION:

For both June and June-July-August as a whole, below-average precipitation is more likely than above-average precipitation.

The probability that UK-average precipitation for June-July-August will fall into the driest of our five categories is 25% and the probability that it will fall into the wettest of our five categories is 10% (the 1981-2010 probability for each of these categories is 20%).

## CONTEXT:

The summer period is one of the driest times of year across the UK (see figure P1), with more showery and localised precipitation. This often leads to more regional variability. The predictability of UK precipitation is thought to be lower than in winter because there are generally few large-scale global factors that influence weather patterns across Northern Europe in summer. As stated in the temperature outlook, no specific type of weather pattern appears more likely than usual across the UK in June. As a result, long-range prediction systems give fairly balanced probabilities of above- and below-average rainfall for June, with only

a slight increase in the likelihood of drier-than-average conditions (see left-hand graph of figure P2). For June-July-August, the Met Office long-range prediction system, along with systems from other prediction centres, shows an increased likelihood of high pressure compared to normal. As a result, below-average precipitation is moderately more likely than above-average precipitation (see right-hand graph of figure P2). Nevertheless, a wet summer, while less probable than usual, remains a realistic possibility.

Fig P1

3-month UK outlook for precipitation in the context of the observed annual cycle

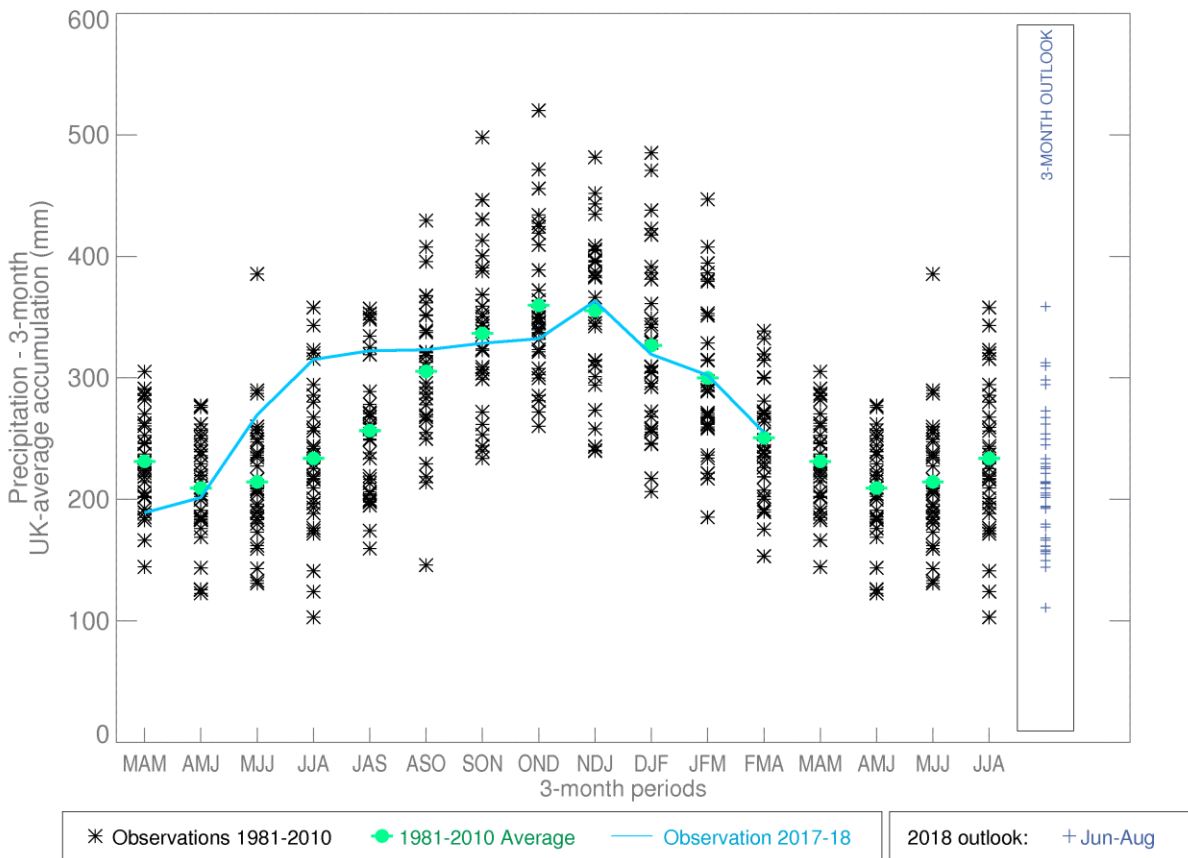


Fig P2

1-month and 3-month UK outlook for precipitation in the context of observed climatology

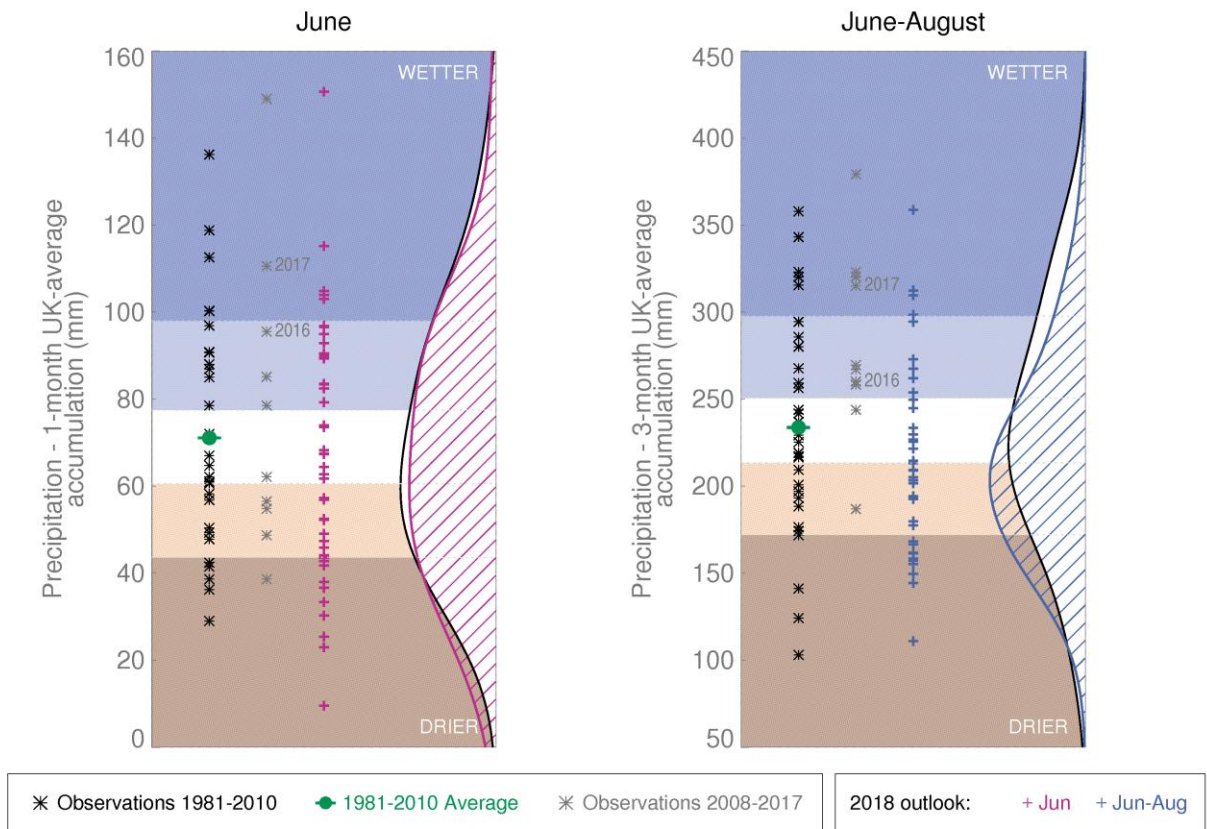
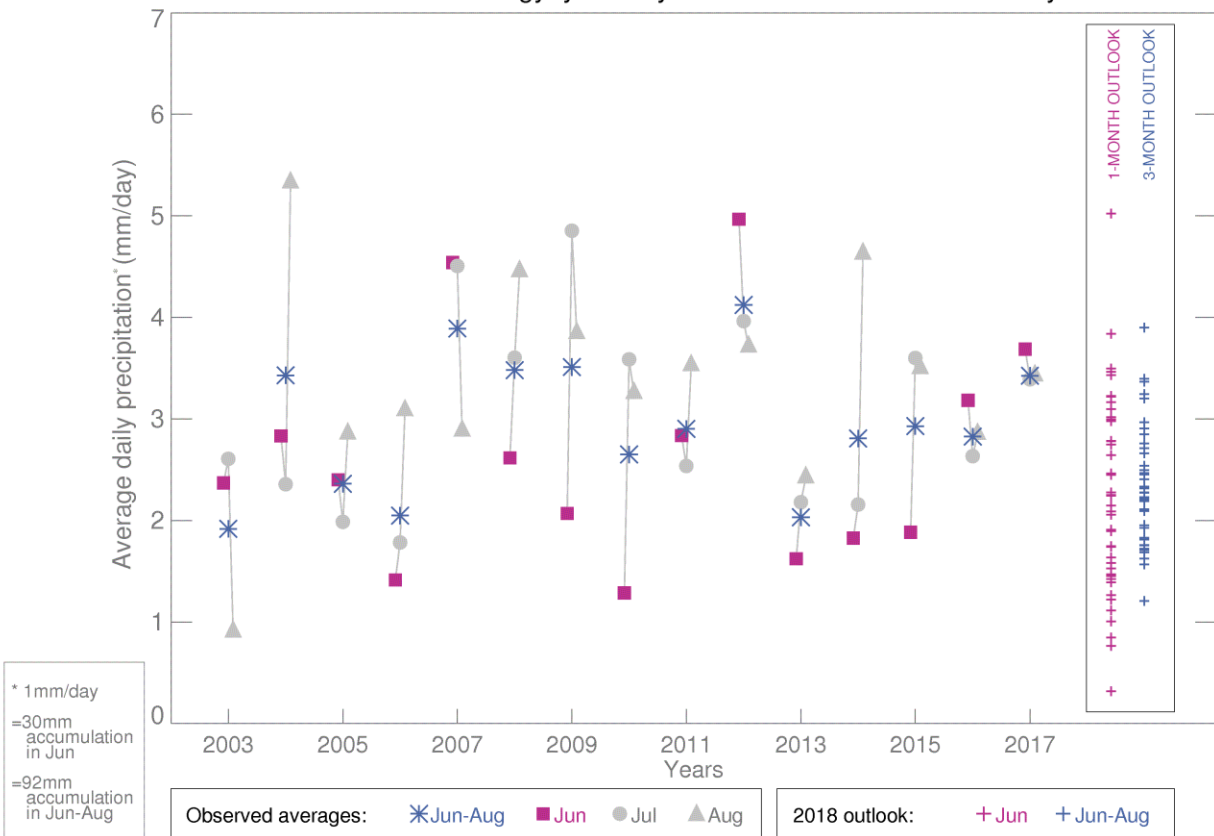


Fig P3

1-month and 3-month UK outlook for precipitation in the context of recent climatology: year-to-year and within-season variability



This Outlook provides an indication of possible temperature and rainfall conditions over the next 3 months. It is part of a suite of forecasts designed for contingency planners. The Outlook should not be used in isolation but should be used with shorter-range and more detailed (30-day, 15-day and 1-to-5-day) forecasts and warnings available to the contingency planning community from the Met Office.