



Met Office

Met Office 3-month Outlook

Period: June – August 2020 Issue date: 21.05.20

The forecast presented here is for June and the average of the June-July-August period for the United Kingdom as a whole. The forecast for June will be superseded by the long-range information on the public weather forecast web page (www.metoffice.gov.uk/public/weather/forecast/#?tab=regionalForecast), starting from 29th May 2020.

This forecast is based on information from observations, several numerical prediction systems and expert judgement.

SUMMARY – PRECIPITATION:

For June, below-average precipitation is more likely than above-average precipitation. For June-July-August as a whole, below-average precipitation is slightly more likely than above-average precipitation.

The probability that UK-average precipitation for June-July-August will fall into the driest of our five categories is 25% and the probability that it will fall into the wettest of our five categories is between 15% and 20% (the 1981-2010 probability for each of these categories is 20%).

CONTEXT:

As stated in the temperature Outlook, there is a relative lack of global drivers of UK weather patterns at this time of year, which causes predictability of precipitation amounts to be lower. This means there are typically only small shifts in the likelihood of above- and below-average precipitation.

Despite that, agreement between long-range systems from global prediction centres is higher than normal for June. There is a signal for a greater-than-usual chance of high pressure near the UK, and therefore an increased likelihood of drier-than-normal conditions (see left-hand graph of figure P2).

For June-July-August as a whole, signals are weak, with only a slightly greater-than-normal chance of high pressure near the UK. This results in a modest increase in the likelihood of below-average rainfall (see right-hand graph of figure P2). The chances of above-average rainfall, however, are only marginally less than usual. Spells of more unsettled, wet and windy weather are not precluded even if the Outlook period turns out to be drier-than-normal overall.

Fig P2

1-month and 3-month UK outlook for precipitation in the context of observed climatology

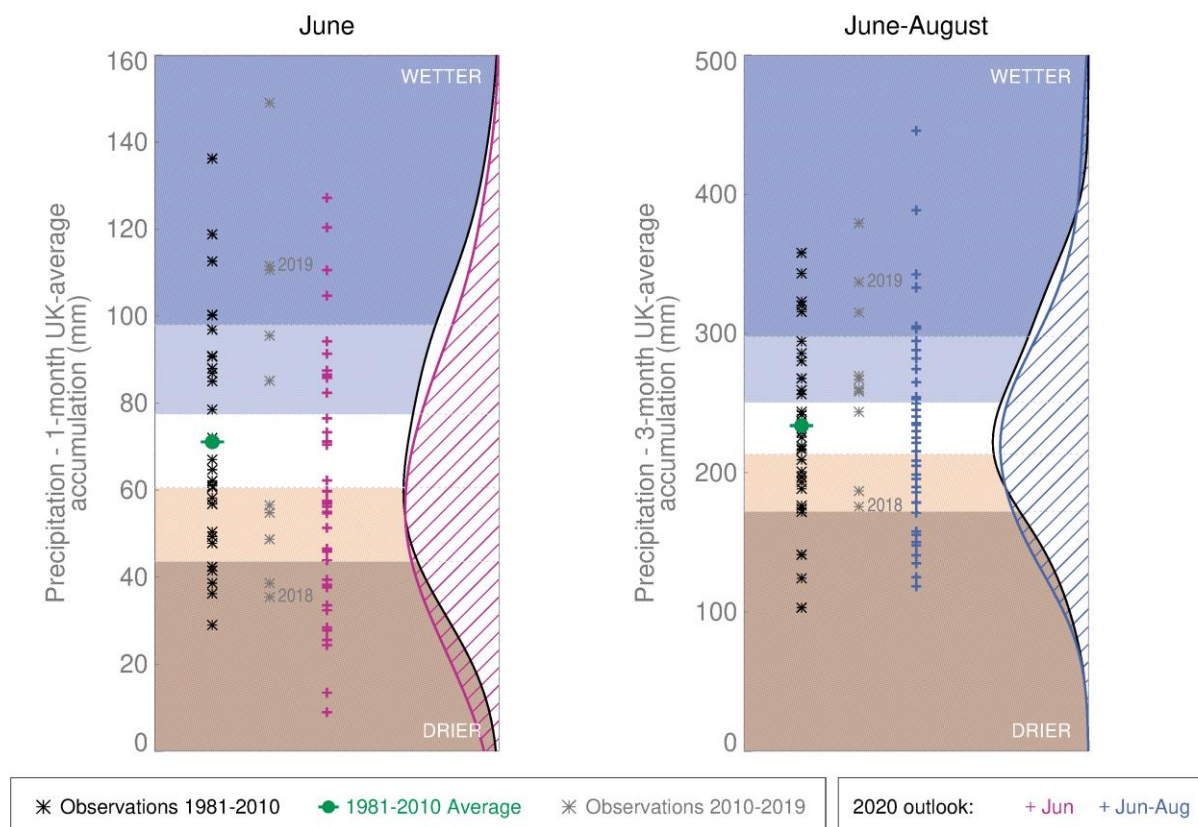


Fig P1

3-month UK outlook for precipitation in the context of the observed annual cycle

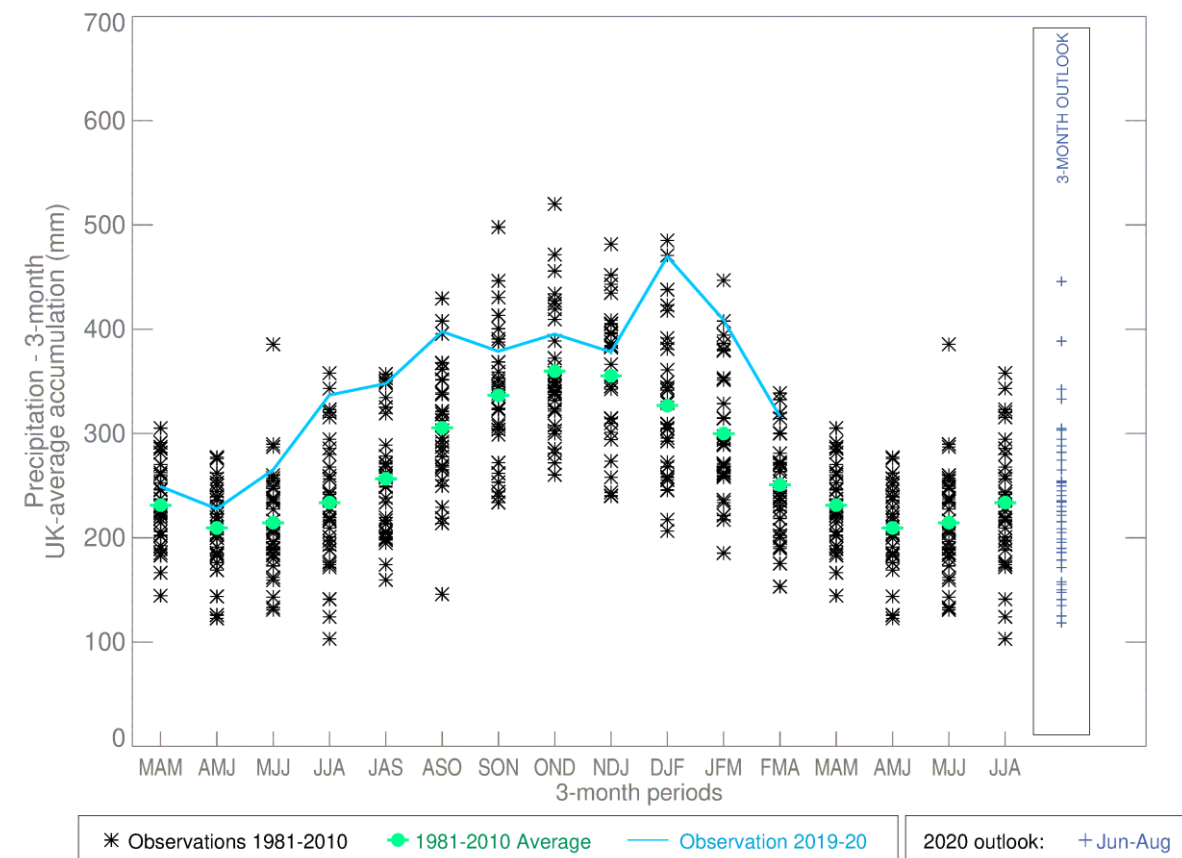
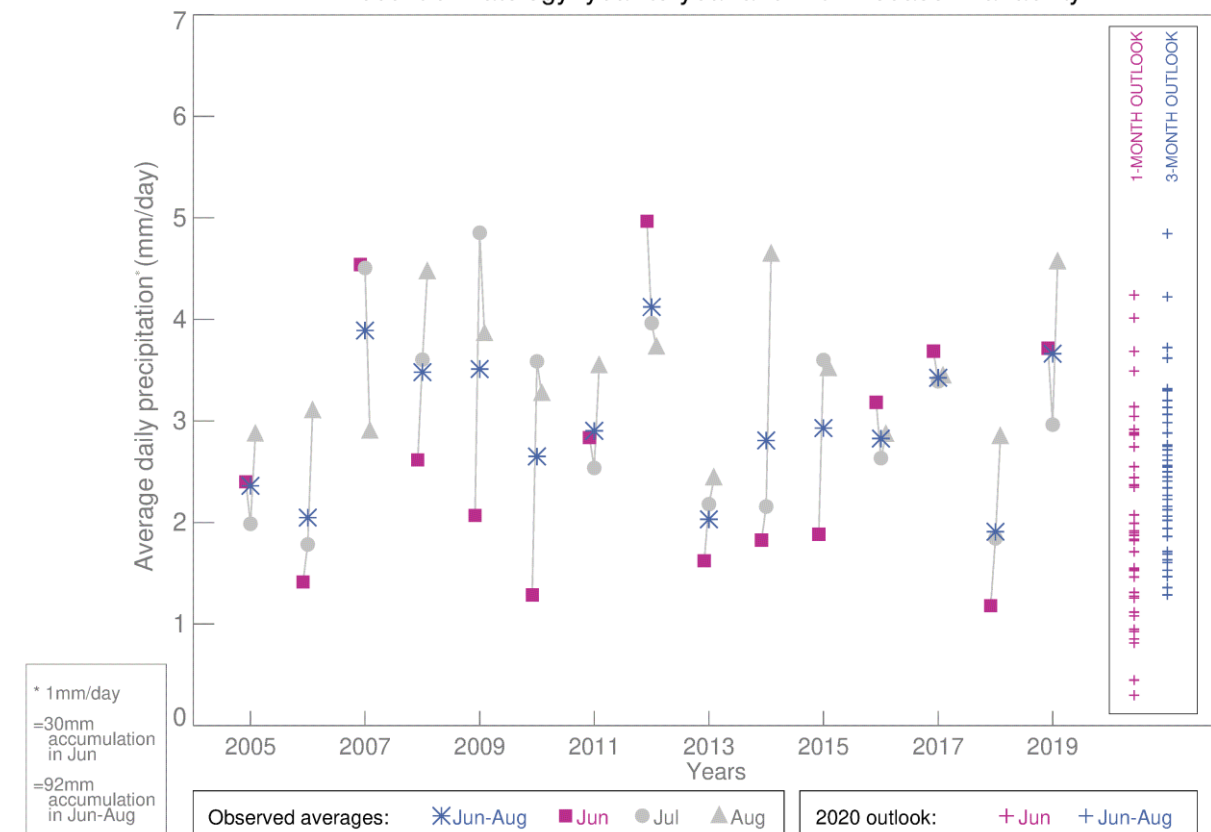


Fig P3

1-month and 3-month UK outlook for precipitation in the context of recent climatology: year-to-year and within-season variability



This Outlook provides an indication of possible temperature and rainfall conditions over the next 3 months. It is part of a suite of forecasts designed for contingency planners.

The Outlook should not be used in isolation but should be used with shorter-range and more detailed (30-day, 15-day and 1-to-7-day) forecasts and warnings available to the contingency planning community from the Met Office.