

22ND DEC 1911 - 26TH JAN 1912

REGISTER OF

1ST RETURN PARTY

SUMMER

1911 - 1912

BAR 757

SLING
THERM

III

B.A.E.
28

Lunch at.

\$5.25

Chances the Day After Lunch

\$3.30.

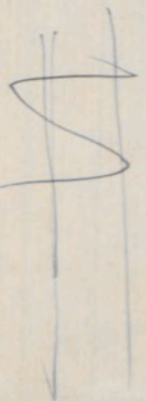
mule

29 1/4.

3 3/4

31

124



Dec 22nd Mr Darwin
 25- Clondmaher
 29 10' Reddy Depot
 Jan 16 One Lon Depot

BRITISH ANTARCTIC EXPEDITION, 1899
 METEOROLOGICAL OBSERVATIONS
 INSTRUMENTS IN USE, AND THEIR CORRECTIONS

By *Dr. Robert Frost*
 Position of Station: *Lat. 66° 45' S. Long. 150° 15' W.*
 Height of Barometer Cistern above Mean Sea Level: *100 feet*
 Date: *During 1901-1902*
 Taken at: *McMurdo Station*

BRITISH ANTARCTIC EXPEDITION, 1910.

METEOROLOGICAL OBSERVATIONS

TAKEN AT

On the Barrier

During 1911-12.

By 1st return party.

Position of Station: Lat. _____ Long. _____

Height of Barometer Cistern above Mean Sea Level _____ feet.

INSTRUMENTS IN USE, AND THEIR CORRECTIONS.

BAROMETER, No. 757. COMPARED WITH STANDARD at Cape Evans in 1911.

Correction
required

*Barometer set to agree
with standard with
all correction included
gravity applied.*

G - return

- .09.

*Correction applied therefore
~~-.05~~ - .09*

THERMOMETERS

-77 -50 -32 -10 +10 +32.

Sling III
Dry Bulb.

No. 92

0.0 0.0 +0.5 -0.5 -0.5 -1.0.

Max. in Shade. No. _____

Min. in Shade. No. _____

Max. in Sun. No. _____

Min. on Snow. No. _____




No. _____

No. _____

Correction applied

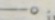
- 0.5.

WEATHER.—Initials of the Beaufort Notation and Symbols adopted by international agreement for recording phenomena of weather.

b.	blue sky	r.	● rain.	~	glazed frost.
c.	detached clouds.	p.	passing showers.		
o	overcast.	d.	drizzling rain.	☂	gale.
m.	 mist.	e.	wet air without rain falling.	q.	squally.
f.	 fog.	s.	* snow.		
g.	gloomy.	+	snow drift.	○	solar corona.
u.	ugly, threatening.	⊗	snow lying.*	⊕	solar halo.
z.	 dust haze or smoke.	←	ice crystals.	☾	lunar corona.
v.	unusual visibility.	h.	▲ hail.	☾	lunar halo.
t.	⊥ thunder.	Δ	soft-hail.		
l.	< lightning.	w.	☾ dew.	(rainbow.
K	thunderstorm.	x.	⊥ hoar frost.	☄	aurora.
		V	silver-thaw. rime.		

* More than half the country in sight round the station covered with snow.

NOTE.—Do not use "h" for haze, nor "sh" for showers.

A line under an initial or the exponent "2," appended to a symbol, denotes intensity thus h or ▲² indicates heavy hail,  indicates light fog or mist.

BEAUFORT WIND SCALE.

Beaufort Number.	Description of Wind.	Equivalent velocity in miles per hour.
0	Calm.	0
1	} Light Breeze.	2
2		5
3		10
4	} Moderate Breeze.	15
5		21
6	} Strong Wind.	27
7		35
8		42
9	} Gale forces.	50
10		59
11	} Storm forces.	68
12		75
	Hurricane.	above

WEATHER.—Initials of the Beaufort Notation and Symbols

INSTRUCTIONS.

Barometer.—The aneroid barometer should be lightly tapped before taking a reading.

Hypsometer.—Only pure water obtained from snow to be used. No water should be allowed to splash into the bulb of the thermometer during an observation.

Thermometer.—The aluminium sling thermometer should be allowed to remain in the open for at least ten minutes before a reading is taken in order that the bulb may acquire a temperature near that of the air. When an observation is to be made the thermometer should be opened and swung for a minute; the swinging must then be repeated until three readings have been obtained, each giving the same temperature. The final steady reading should then be entered in the note book.

Wind.—All wind directions must be "true" and not "magnetic."

Clouds.—The proportion of the sky covered by cloud should be indicated on a numerical scale running from 0, cloudless, to 10, completely overcast. The numbers given are to refer solely to the amount of the sky covered and not to the density, height or other quality of the cloud. Fog must be regarded as a cloud at ground level, and 10 must accordingly be entered for the amount of cloud on foggy days. If clouds can be seen through a thin mist, the amount of real cloud should be entered in the column and a note made under "Remarks."

BRITISH ANTARCTIC EXPEDITION. 1910.

REMARKS.

The following are the chief cloud forms:

Cirrus	...	(Ci)	...	} High.
Cirro-Stratus	...	(Ci-St)	...	
Cirro-Cumulus	...	(Ci-Cu)	...	
Alto-Cumulus	...	(A-Cu)	...	
Alto-Stratus	...	(A-St)	...	
Strato-Cumulus	...	(St-Cu)	...	} Low.
Cumulus	...	(Cu)	...	
Stratus	...	(St)	...	
Nimbus	...	(Nb)	...	

Enter cloud directions as you would wind directions, *i.e.*, the direction from which they are coming.

Weather.—The Beaufort notation given on page 3 should be used.

Remarks.—Haloes and any unusual phenomena should be noted. It is also desirable that general topographical notes should be added, as for instance, "In valley running N W.," "To-day's camp higher than yesterday's," etc.

BRITISH ANTARCTIC EXPEDITION, 1910.

OBSERVER'S
INITIALS.

REMARKS.

DAY.	HOUR	POSITION.		Bar	Hyps- omet- er	Dry Bulb	Wind Dir. True	Wind Force	Weather	CLOUD.		
		Lat.	Long.							Amount	Kind	Direction from upper lower
Dec 22	8.30	Am. Mc Davis		abt. 9000 ft								
22	14.20	Buckley Id.		23.790		+0.7	light air			2	Cu over land	
22	19.40			24.100		+8.0	light air			0	"	

BRITISH ANTARCTIC EXPEDITION, 1910.

REMARKS.

OBSERVER'S
INITIALS.

* part of am. then cleared (fluff back)

DAY.	HOUR	POSITION.		Bar	Hyps- omet- er	Dry Bulb	Wind Dir. True	Wind Force	Weather	CLOUD.		
		Lat.	Long.							Amount	Kind	Direction from upper lower
Dec 23	6:30A			24.100		+6	Calm	b.		0	0	
Dec 23.	13:15			24.59		+9	Calm	b.		0	0	
Dec 23.	19:45			25.050		+13	Calm	b		0	0	

BRITISH ANTARCTIC EXPEDITION, 1910.

REMARKS.

OBSERVER'S
INITIALS.

Cumulus over mts

DAY.	HOUR	POSITION.		Bar	Hyps- omet- er	Dry Bulb	Wind Dir. True	Wind Force	Weather	CLOUD.		
		Lat.	Long.							Amount	Kind	Direction from upper lower
Dec 24	8:30.			25.04		+13	SW	² 6		0		
- 24	13:30			25.59		+15.5	SW	1	b.	0.		
- 24	22 hrs			26.32			light air	b.		0		

BRITISH ANTARCTIC EXPEDITION, 1910.

REMARKS.

OBSERVER'S
INITIALS.

DAY.

HOUR

POSITION:

Lat. Long.

Bar

Hyps-
omet-
erDry
BulbWind
Dir.
TrueWind
Force

Weather

CLOUD.

Amount

Kind

Direction from
upper lower

BRITISH ANTARCTIC EXPEDITION, 1910.

REMARKS.

OBSERVER'S
INITIALS.

Dec 25 8 hrs Cloud Dept 26.28 413 419 Sw. 07 6 0

Dec 25 2600 26.97 413 419 Sw. 07 6 0

Clear

Clear all day

DAY.

HOURL

POSITION

Lat.

Long.

Bar

Hyps-
omet-
er

Dry
Bulb

Wind
Dir.
True

Wind
Force

Weather

CLOUD.

Amount

Kind

Direction from
upper lower

Dec 26

8

26.97

+17

SE

2

3

Cl

26 13.30

27.37

+23.

light Air

3

Cl

26. 21.15

27.855

+23

N, 1

7

Cl

BRITISH ANTARCTIC EXPEDITION, 1910.

REMARKS.

OBSERVER'S
INITIALS.

Cl St 8 All Pul.

DAY. HOUR POSITION. Bar Hyps-omet-er Dry Bulb Wind Dir. True Wind Force Weather CLOUD. Amount Kind Direction from upper lower

Dec 27. 8. 22 light air Cst 9

Dec 27 14 hrs 28.42 126 light air Sls Cst 1

27. 19 hrs 28.92 126 " " "

BRITISH ANTARCTIC EXPEDITION, 1910.

REMARKS.

OBSERVER'S INITIALS.

DAY. HOUR POSITION. Lat. Long. Bar Hyps-ometer Dry Bulb Wind Dir. True Wind Force Weather CLOUD. Amount Kind Direction from upper lower

Dec 20 7. 29.79 130.2 0 10 04

30th 1845 29.74 120 Calm 0.5 3 14

BRITISH ANTARCTIC EXPEDITION, 1910.

REMARKS.

Overcast

OBSERVER'S INITIALS.

OBSERVER'S
 DAY. HOUR POSITION. Lat. Long. Bar Hyps-ometer Dry Bulb Wind Dir. True Wind Force Weather CLOUD. Amount Kind Direction from upper lower

Dec 31 7. 29.73 10.3 Calm 6. None

1911 13h 29.70 +20 Calm 6. None

3d 19h 29.63 +17 0-1 N 30W. None

BRITISH ANTARCTIC EXPEDITION, 1910.

OBSERVER'S INITIALS.

REMARKS.

App^y going up here all day.

OBSERVER'S DAY.	HOUR	POSITION.		Bar	Hyps- omet- er	Dry Bulb	Wind Dir. True	Wind Force	Weather	CLOUD.		
		Lat.	Long.							Amount	Kind	Direction from upper lower

Jan 7				29.56	+10	hw	0-1	0	* 10	Sh			
-------	--	--	--	-------	-----	----	-----	---	------	----	--	--	--

2 nd 13 1/2				29.525	+14	light drizzle	0	*	10	Sh			
------------------------	--	--	--	--------	-----	---------------	---	---	----	----	--	--	--

2 nd 19				29.44	+13.	hw	0-1	3	0-1				
--------------------	--	--	--	-------	------	----	-----	---	-----	--	--	--	--

BRITISH ANTARCTIC EXPEDITION, 1910.

OBSERVER'S
INITIALS.

REMARKS.

Fog depositing scale on window side of ropes etc.

Fog bow incomplete at 12 from sun 150° + 210° (30° wide)
at 6.30 PM C.E.T.

DAY.	HOUR	POSITION.		Bar	Hyps- omet- er	Dry Bulb	Wind Dir. True	Wind Force	Weather	CLOUD.		
		Lat.	Long.							Amount	Kind	Direction from upper lower

Jan 3	630			29.33	+5	NW	2	0	10	fog			
-------	-----	--	--	-------	----	----	---	---	----	-----	--	--	--

	13:30			29.30	+13	NW ^E	2	6	0				
--	-------	--	--	-------	-----	-----------------	---	---	---	--	--	--	--

	18:45			29.29	+12	NW ^E	1-2	0*	10	h			
--	-------	--	--	-------	-----	-----------------	-----	----	----	---	--	--	--

BRITISH ANTARCTIC EXPEDITION, 1910.

OBSERVER'S
INITIALS.

REMARKS.

Fog Xals deposited during night

Cloud on horizon in forenoon
Wind uncloudy
force all march

DAY.	HOUR	POSITION.		Bar	Hyps- omet- er	Dry Bulb	Wind Dir. True	Wind Force	Weather	CLOUD.		
		Lat.	Long.							Amount	Kind	Direction from upper lower

Jan 4 7 29.37 +16 6/10 0*10

1330 29.41 +20 2-3 S 30 E 6 3 Cu SK

19 29.42 +21 4.5 S 30 E 0 10 H

BRITISH ANTARCTIC EXPEDITION, 1910.

REMARKS.

OBSERVER'S
INITIALS.

DAY. HOUR POSITION. Lat. Long. Bar Hyps-omet-er Dry Bulb Wind Dir. True Wind Force Weather CLOUD. Amount Kind Direction from upper lower

7 29.44 +16 light air 0*10 SL

12 29.43 +23 SW³ 2 0 10 SL

13 1/2 29.45 17.5⁺ +17 light air 0*10 SL

BRITISH ANTARCTIC EXPEDITION, 1910.

REMARKS.

OBSERVER'S INITIALS.

DAY.	HOUR	POSITION.		Bar	Hyps- omet- er	Dry Bulb	Wind Dir. True	Wind Force	Weather	CLOUD.		
		Lat.	Long.							Amount	Kind	Direction from upper lower

Jan 6	8			29.42	+17	NW	0-1	0	* 10	St.		
-------	---	--	--	-------	-----	----	-----	---	------	-----	--	--

	12 ^h			29.41	+21	SE	0-3	0	* 10	St.		
--	-----------------	--	--	-------	-----	----	-----	---	------	-----	--	--

	19			29.34	+17	N ^h	1	0	* 10	St.		
--	----	--	--	-------	-----	----------------	---	---	------	-----	--	--

BRITISH ANTARCTIC EXPEDITION, 1910.

OBSERVER'S
INITIALS.

REMARKS.

At am. wind from all directions

(0-3)
In Pm. Wind & drifting from all points of compass
light & snow from all points of horizon

Fine summer weather on the Barrow

DAY.

HOUR

POSITION.

Lat.

Long.

Bar

Hyps-
omet-
erDry
BulbWind
Dir.
TrueWind
Force

Weather

CLOUD.

Amount

Kind

Direction from
upper lower

BRITISH ANTARCTIC EXPEDITION, 1910.

REMARKS.

OBSERVER'S
INITIALS.

Jan 7

7

29.36

+ 15

SE

1

0 *

10

St

11 1/2

29.26

High Air

0 *

10

18

29.20

+ 18

High Air

0 *

10

DAY.	HOUR	POSITION.		Bar	Hyps- omet- er	Dry Bulb	Wind Dir. True	Wind Force	Weather	CLOUD.			
		Lat.	Long.							Amount	Kind	Direction from upper lower	

Jan 8	7			29.07	+13	72.0	3	0*	10				
	13 hr			29.02	+15	72.0	3-4	0*	10				
	18			28.98	+15	72.0	3-4	0	10	01'			

BRITISH ANTARCTIC EXPEDITION, 1910.

REMARKS.

OBSERVER'S
INITIALS.

OBSERVER'S
DAY.

HOUR

POSITION.

Lat.

Long.

Bar

Hyps-
omet-
erDry
BulbWind
Dir.
TrueWind
Force

Weather

CLOUD.

Amount

Kind

Direction from
upper lower

BRITISH ANTARCTIC EXPEDITION, 1910.

OBSERVER'S
INITIALS.

REMARKS.

Jan 9. 7 29.16 + 18 72° 0-1 0* 10

11 29.17 + 19.5 E 134 0* 10

19/2 29.17 + 18 72.5 2 0* 10

DAY.	HOUR	POSITION.		Bar	Hyps- omet- er	Dry Bulb	Wind Dir. True	Wind Force	Weather	CLOUD.		
		Lat.	Long.							Amount	Kind	Direction from upper lower
Jan 10	7			29.27	+	18	light air	0*	10			
	12			29.30	+	18	SE	1	0	10	St	
	19			29.33			light air	0.		10	St	

BRITISH ANTARCTIC EXPEDITION, 1910.

REMARKS.

OBSERVER'S
INITIALS.

DAY.	HOUR	POSITION.		Bar	Hyps- omet- er	Dry Bulb	Wind Dir. True	Wind Force	Weather	CLOUD.			
		Lat.	Long.							Amount	Kind	Direction from	
											upper	lower	

Jan 11	7			29.22	+	10	W	4	0	10	St		
--------	---	--	--	-------	---	----	---	---	---	----	----	--	--

	13			29.29	+	15	S 60° W	4	0	10	St		
--	----	--	--	-------	---	----	---------	---	---	----	----	--	--

	19			29.24	+	15	W	2	0	10	St		
--	----	--	--	-------	---	----	---	---	---	----	----	--	--

BRITISH ANTARCTIC EXPEDITION, 1910.

REMARKS.

OBSERVER'S
INITIALS.

Saw blue sky today for first time in a week or more.

Hope to see the sun some day this month.

OBSERVER'S DAY.	HOUR	POSITION.		Bar	Hyps- omet- er	Dry Bulb	Wind Dir. True	Wind Force	Weather	CLOUD.			
		Lat.	Long.							Amount	Kind	Direction from	
												upper	lower
	12 6 ¹ / ₄			29.05	+12	light	air	00	10	A.S.			
	12			29.04	+13	light	air	00	7	PR			
	19			28.99	+13.5	light	air	00	5	0			

BRITISH ANTARCTIC EXPEDITION, 1910.

OBSERVER'S
INITIALS.

REMARKS.

DAY.	HOUR	POSITION.		Bar	Hyps- omet- er	Dry Bulb	Wind Dir. True	Wind Force	Weather	CLOUD.			
		Lat.	Long.							Amount	Kind	Direction from	
												upper	lower
Jan 14	6 1/2			29.06	+	8	S 30 W	2	ob.	3	sk.		
	13 1/2			29.18	+	15.5	SSW	2	b.	1	sk.		
	19			29.27	+	15	lighter N by E mod	6	0				

BRITISH ANTARCTIC EXPEDITION, 1910.

OBSERVER'S
INITIALS.

REMARKS.

Undulating here

DAY.

HOUR

POSITION.

Lat.

Long.

Bar

Hyps-
omet-
erDry
BulbWind
Dir.
TrueWind
Force

Weather

CLOUD.

Amount

Kind

Direction from
upper lower

BRITISH ANTARCTIC EXPEDITION, 1910.

REMARKS.

OBSERVER'S

INITIALS.

12 6 1/2 29.32 + 8 8 1. ob 0

13 29.32 + 24 W 1 b. 1 A.S.

19 1/2 + 16 light b. 0

incomplete for 6000 9000 10000 11000 12000 13000 14000 15000 16000 17000 18000 19000 20000 21000 22000 23000 24000 25000 26000 27000 28000 29000 30000 31000 32000 33000 34000 35000 36000 37000 38000 39000 40000 41000 42000 43000 44000 45000 46000 47000 48000 49000 50000 51000 52000 53000 54000 55000 56000 57000 58000 59000 60000 61000 62000 63000 64000 65000 66000 67000 68000 69000 70000 71000 72000 73000 74000 75000 76000 77000 78000 79000 80000 81000 82000 83000 84000 85000 86000 87000 88000 89000 90000 91000 92000 93000 94000 95000 96000 97000 98000 99000 100000

DAY.

HOUR

POSITION.

Lat.

Long.

Bar

Hyps-
omet-
erDry
BulbWind
Dir.
TrueWind
Force

Weather

CLOUD.

Amount

Kind

Direction from
upper lower

BRITISH ANTARCTIC EXPEDITION, 1910.

REMARKS.

OBSERVER'S

INITIALS.

Jan. 17 6 1/2

29.29

-2 +3

+15

light

06

if

13

29.28

+15.5 NE 2-3 60* 10

19 1/2

29.32

13. SW 3 0* 10

fog. Starts on ship. fog breaks alt. that opens at 6.10. C. 2. 10.

DAY.

HOUR

POSITION.

Lat.

Long.

Bar

Hyps-
omet-
er

Dry
Bulb

Wind
Dir.
True

Wind
Force

Weather

CLOUD.

Amount

Kind

Direction from
upper lower

BRITISH ANTARCTIC EXPEDITION, 1910.

REMARKS.

OBSERVER'S
INITIALS.

Jan 19. 6 1/2

29.37 +8 +11 S 2-3 0 * 10

10 3/4

29.37 +12 Snow 2 0 * 10

20 1/2

29.41 +12 Snow 2-3 0 * 10

feather X 10

DAY.

HOUR

POSITION.

Lat. Long.

Bar

Hyps-
omet-
erDry
BulbWind
Dir.
TrueWind
Force

Weather

CLOUD.

Amount Kind

Direction from
upper lower

BRITISH ANTARCTIC EXPEDITION, 1910.

REMARKS.

OBSERVER'S
INITIALS.

Jan 19 7⁴⁵ 29.41 +8 40 SW 1 0 0

13 29.43 +13 75⁰ 1 0 0

19 29.38 +12 75⁰ 1 0 0

DAY.

HOUR

POSITION.

Lat. Long.

Bar

Hyps-
omet-
erDry
BulbWind
Dir.
TrueWind
Force

Weather

CLOUD.

Amount Kind

Direction from
upper lower

BRITISH ANTARCTIC EXPEDITION, 1910.

REMARKS.

OBSERVER'S
INITIALS.

Jan 20	8 1/2			29.30	+12.5	light	dir	ob	3	St.		
	11			29.32	+14	5 ⁰	1-2		4	St		
	17 1/2			29.31	+17.5	light	dir	ob	3	St	to Nord	

fog Xlat

DAY.	HOUR	POSITION.		Bar	Hyps- omet- er	Dry Bulb	Wind Dir. True	Wind Force	Weather	CLOUD.		
		Lat.	Long.							Amount	Kind	Direction from upper lower

Jan 2	6 1/2			29.27	-2	+9	7 1/2	1	b.	0		
	13			29.28		+19	7	1	b	0		
	17			29.30		+19 1/2	7	1	b	0		

BRITISH ANTARCTIC EXPEDITION, 1910.

REMARKS.

OBSERVER'S
INITIALS.

DAY. HOUR POSITION. Lat. Long. Bar Hyps-omet-er Dry Bulb Wind Dir. True Wind Force Weather CLOUD. Amount Kind Direction from upper lower

Jan 22 7 29.35 +19 S 300 5 0 7 10 Cl

7-8

19 29.52 +11 S 300 7 0 7 10 Cl

BRITISH ANTARCTIC EXPEDITION, 1910.

REMARKS.

OBSERVER'S INITIALS.

DAY. HOUR POSITION. Lat. Long. Bar Hyps-omet-er Dry Bulb Wind Dir. True Wind Force Weather CLOUD. Amount Kind Direction from upper lower

Jan 24	8			29.65	-3	13.2	light air	b.	0				
	13 1/2			29.63			30.8	2	b.	3	st		
	15 1/2					17							
	18			29.62		14	light air	b.	0				

BRITISH ANTARCTIC EXPEDITION, 1910.

REMARKS.

OBSERVER'S INITIALS.

OBSERVER'S DAY.	HOUR	POSITION.		Bar	Hyps- omet- er	Dry Bulb	Wind Dir. True	Wind Force	Weather	CLOUD.		
		Lat.	Long.							Amount	Kind	Direction from upper lower

Jan 25	7			29.56	+ 2 1/2		Calm	6	0			
--------	---	--	--	-------	---------	--	------	---	---	--	--	--

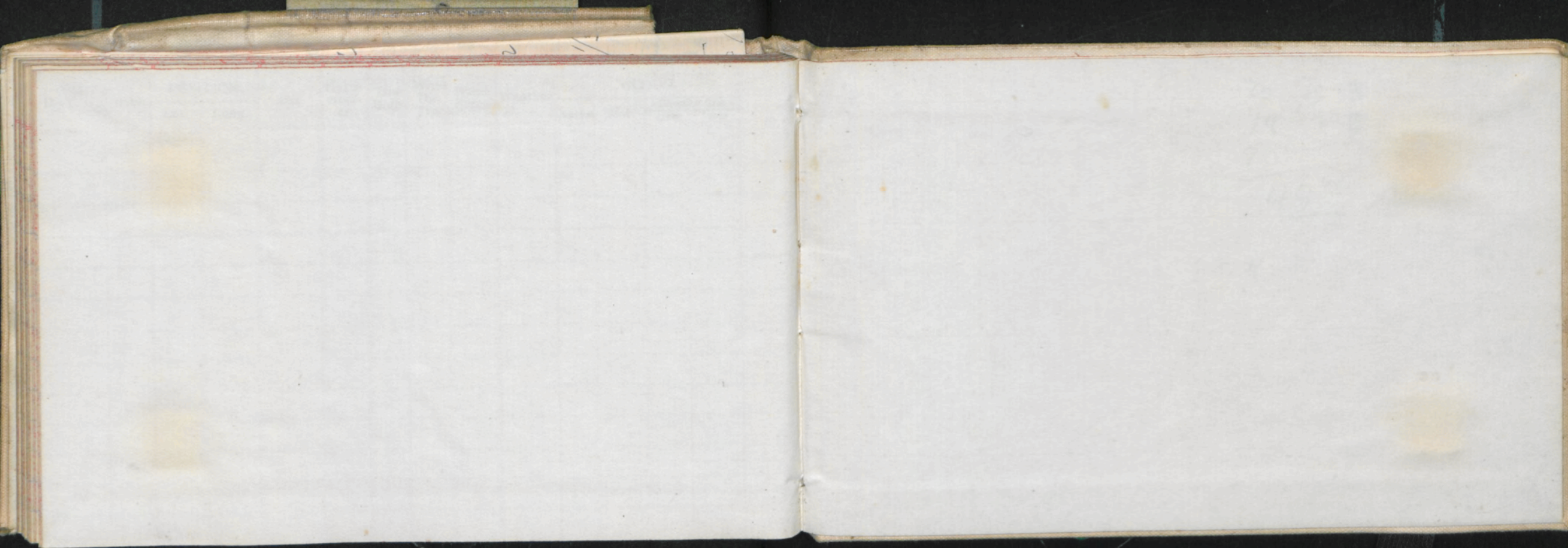
	13				+ 9	S	12	6	0			
--	----	--	--	--	-----	---	----	---	---	--	--	--

	19			29.56	+ 11		light drizzle	6	0			
--	----	--	--	-------	------	--	------------------	---	---	--	--	--

BRITISH ANTARCTIC EXPEDITION, 1910.

REMARKS.

OBSERVER'S
INITIALS.



$$\begin{array}{r} 36 \\ 10\frac{1}{2}p \\ \hline 8\frac{1}{2} \\ 5\frac{1}{2} \\ 10\frac{1}{2} \\ 13 \\ \hline \end{array}$$
 Jan 19
 Jan 20

20 $\frac{4}{3}$.3
 18 . 8
 10
49^m

19.800.

