

Log

# Western Journey

Apr / 12

13<sup>th</sup> APR 1912 - 23.4.1912.

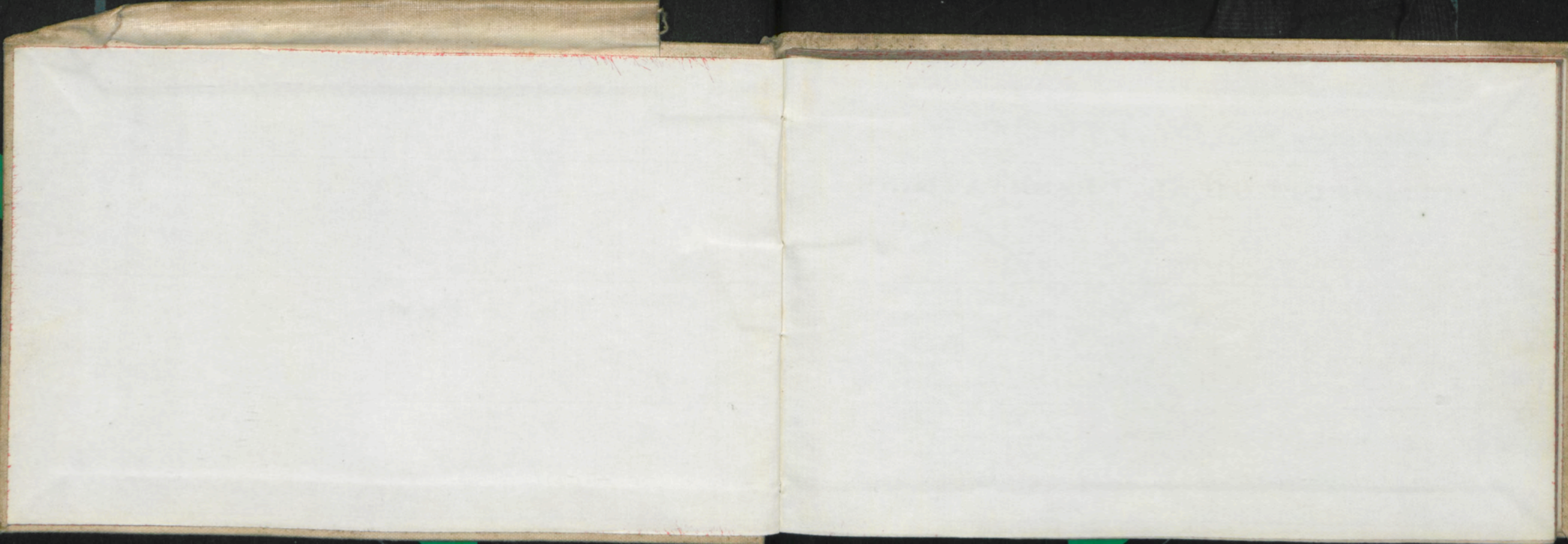
Late Autumn

BEA

32







## METEOROLOGICAL OBSERVATIONS



BRITISH ANTARCTIC EXPEDITION, 1910.

## METEOROLOGICAL OBSERVATIONS

TAKEN AT

During 19

By

Position of Station: Lat. \_\_\_\_\_ Long. \_\_\_\_\_

Height of Barometer Cistern above Mean Sea Level \_\_\_\_\_ feet.

## WEATHER—Initials of the Baromet Notation and Symbols INSTRUMENTS IN USE, AND THEIR CORRECTIONS.

BAROMETER, No. \_\_\_\_\_ COMPARED WITH STANDARD at \_\_\_\_\_ in 19 \_\_\_\_\_

Correction  
required

### THERMOMETERS

Dry Bulb. No. \_\_\_\_\_

Max. in Shade. No. \_\_\_\_\_

Min. in Shade. No. \_\_\_\_\_

Max. in Sun. No. \_\_\_\_\_

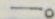
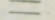

Min. on Snow. No. \_\_\_\_\_

No. \_\_\_\_\_

No. \_\_\_\_\_



**WEATHER.**—Initials of the Beaufort Notation and Symbols adopted by international agreement for recording phenomena of weather.

b.	blue sky	r.	● rain.	~	glazed frost.
c.	detached clouds.	p.	passing showers.		
o	overcast.	d.	drizzling rain.	↘	gale.
m.	 mist.	e.	wet air without rain falling.	q.	squally.
f.	 fog.	s.	* snow.		
g.	gloomy.	+	snow drift.	○	solar corona.
u.	ugly, threatening.	⊠	snow lying.*	⊕	solar halo.
z.	 dust haze or smoke.	←	ice crystals.	☾	lunar corona.
v.	unusual visibility.	h.	▲ hail.	☾	lunar halo.
t.	T thunder.	Δ	soft-hail.		
l.	< lightning.	w.	☾ dew.	(	rainbow.
K	thunderstorm.	x.	⊥ hoar frost.	☄	aurora.
		V	silver-thaw. rime.		

\* More than half the country in sight round the station covered with snow.

NOTE.—Do not use "h" for haze, nor "sh" for showers.

A line under an initial or the exponent "2," appended to a symbol, denotes intensity thus h or ▲<sup>2</sup> indicates heavy hail, —<sup>o</sup> indicates light fog or mist.

**BEAUFORT WIND SCALE.**

Beaufort Number.	Description of Wind.	Equivalent velocity in miles per hour.
0	Calm.	0
1	Light Breeze.	2
2		5
3		10
4	Moderate Breeze.	15
5		21
6	Strong Wind.	27
7		35
8	Gale forces.	42
9		50
10	Storm forces	59
11		68
12	Hurricane.	75



# INSTRUCTIONS.

**Barometer.**—The aneroid barometer should be lightly tapped before taking a reading.

**Hypsometer.**—Only pure water obtained from snow to be used. No water should be allowed to splash into the bulb of the thermometer during an observation.

**Thermometer.**—The aluminium sling thermometer should be allowed to remain in the open for at least ten minutes before a reading is taken in order that the bulb may acquire a temperature near that of the air. When an observation is to be made the thermometer should be opened and swung for a minute; the swinging must then be repeated until three readings have been obtained, each giving the same temperature. The final steady reading should then be entered in the note book.

**Wind.**—All wind directions must be "true" and not "magnetic."

**Clouds.**—The proportion of the sky covered by cloud should be indicated on a numerical scale running from 0, cloudless, to 10, completely overcast. The numbers given are to refer solely to the amount of the sky covered and not to the density, height or other quality of the cloud. Fog must be regarded as a cloud at ground level, and 10 must accordingly be entered for the amount of cloud on foggy days. If clouds can be seen through a thin mist, the amount of real cloud should be entered in the column and a note made under "Remarks."

## BRITISH ANTARCTIC EXPEDITION, 1910.

### REMARKS.

The following are the chief cloud forms:

Cirrus	...	(Ci)	...	} High.
Cirro-Stratus	...	(Ci-St)	...	
Cirro-Cumulus	...	(Ci-Cu)	...	
Alto-Cumulus	...	(A-Cu)	...	
Alto-Stratus	...	(A-St)	...	
Strato-Cumulus	...	(St-Cu)	...	} Low.
Cumulus	...	(Cu)	...	
Stratus	...	(St)	...	
Nimbus	...	(Nb)	...	

Enter cloud directions as you would wind directions, *i.e.*, the direction from which they are coming.

**Weather.**—The Beaufort notation given on page 3 should be used.

**Remarks.**—Haloes and any unusual phenomena should be noted. It is also desirable that general topographical notes should be added, as for instance, "In valley running N W.," "To-day's camp higher than yesterday's," etc.



## BRITISH ANTARCTIC EXPEDITION, 1910.

OBSERVER'S  
INITIALS.

REMARKS.



DAY.	HOUR	POSITION.		Bar	Hyps- omet- er	Dry Bulb	Wind Dir. True	Wind Force	Weather	CLOUD.		
		Lat.	Long.							Amount	Kind	Direction from upper lower
Apr 13	16	Gettongue				-11.2	06.	23 <sup>rd</sup>	slight ↓	10	Bl.	
14	8	Gettongue West				-27	-23	Cal		0		
14.	noon	2 <sup>nd</sup> Crater				-20	N <sup>th</sup>	2	High fog	10		

# BRITISH ANTARCTIC EXPEDITION, 1910.

OBSERVER'S  
INITIALS.

## REMARKS.

light snow fluff balls imperfect patches in







DAY.	HOUR	POSITION.		Bar	Hyps- omet- er	Dry Bulb	Wind Dir. True	Wind Force	Weather	CLOUD.		
		Lat.	Long.							Amount	Kind	Direction from upper lower
Apr 18	12.45	mileage 20	28.92			-31.			Calu	5	St	
	14.					-39						
Apr 18	18.00	mileage 25	28.97			-38			high air	1	St	
		2 <sup>nd</sup> from Blue Sea.										
Apr 19	7	do.	29.07			-45 -15			St. 4.	10	St	

# BRITISH ANTARCTIC EXPEDITION, 1910.

OBSERVER'S  
INITIALS.

REMARKS.



DAY.

HOUR

POSITION.

Lat.

Long.

Bar

Hyps-  
omet-  
erDry  
BulbWind  
Dir.  
TrueWind  
Force.

Weather

CLOUD.

Amount

Kind

Direction from  
upper lower

BRITISH ANTARCTIC EXPEDITION, 1910.

OBSERVER'S  
INITIALS.

REMARKS.

Apr 19 13. 28.50 -15 W. 4 10 Sh

17 2<sup>3</sup> miles  
from B.P.L. 28.74 = 0 6 ↗ 10 Sh  
deposition  
Bulwer Pt.  
mileage 34

20. 9.00 - do - 28.56. -10 -5 high air 10 Sh

Slight Surf. ↗



DAY.	HOUR	POSITION.		Bar	Hyps- omet- er	Dry Bulb	Wind Dir. True	Wind Force	Weather	CLOUD.		
		Lat.	Long.							Amount	Kind	Direction from upper lower

Apr 20	12	B.P. depot		28.62		0	N.	2	0	10	St	
--------	----	------------	--	-------	--	---	----	---	---	----	----	--

	18	on return (off Eskers)		28.57		-5				light air	9	St
		new.										

April	9	do.		28.73	-12	-12				do		
-------	---	-----	--	-------	-----	-----	--	--	--	----	--	--

# BRITISH ANTARCTIC EXPEDITION, 1910.

REMARKS.

OBSERVER'S  
INITIALS.







OBSERVER'S  
DAY.

HOUR

POSITION.

Lat.

Long.

Bar

Hyps-  
omet-  
erDry  
BulbWind  
Dir.  
TrueWind  
Force

Weather

CLOUD.

Amount

Kind

Direction from  
upper lower

BRITISH ANTARCTIC EXPEDITION, 1910.

REMARKS.

OBSERVER'S  
INITIALS.

Apr 22. 12.30

28.90

SE 4 + X

-25 -22 SE 6 +

Apr 23 12.30

29.59

-22 SE 7 +

Slight Snow +



[illegible]

## BRITISH ANTARCTIC EXPEDITION, 1910.

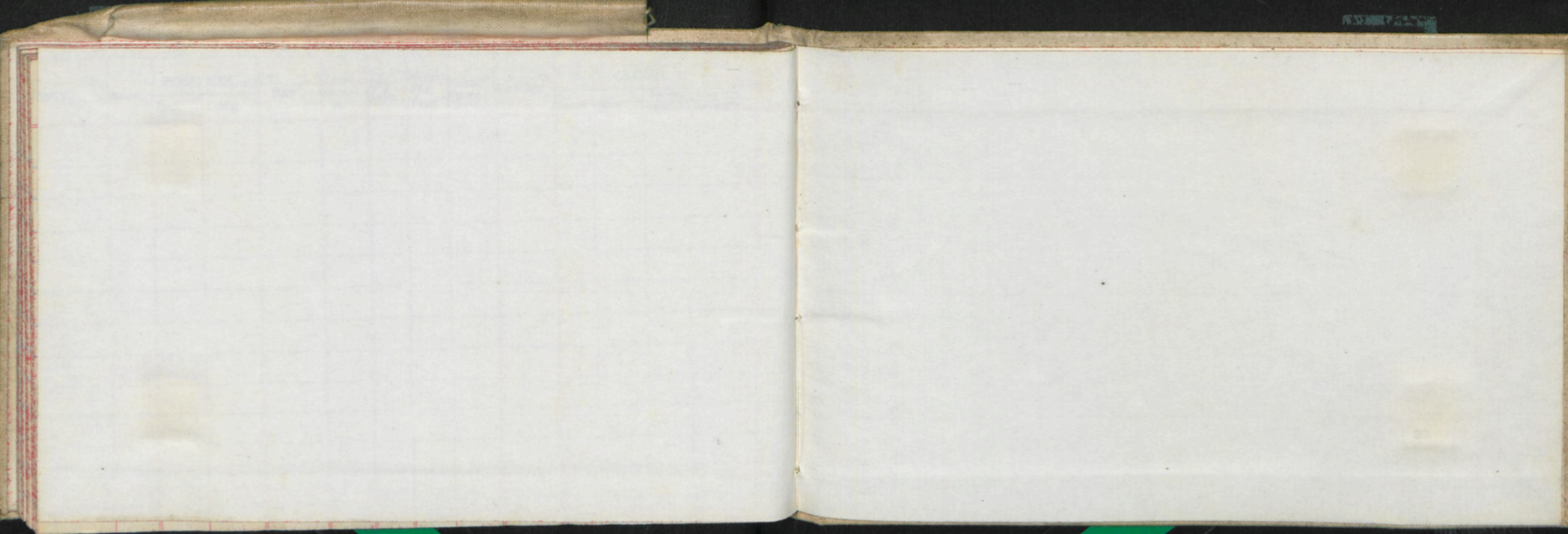
OBSERVER'S  
INITIALS.

REMARKS.











Apr 17, PM, 13<sup>th</sup> (1<sup>st</sup> from former  
 ice (near side), old sea ice 800 ft  
 away, nearly all trees  
 Apr 18, last night 80 ft old ice - 43  
 down cold. Part of new ice 1" deep  
 in all places under foot.





