

4 JAN 1912 — 9<sup>\*</sup> FEB 1912

REGISTER OF

2<sup>ND</sup> RETURN PARTY

SUMMER

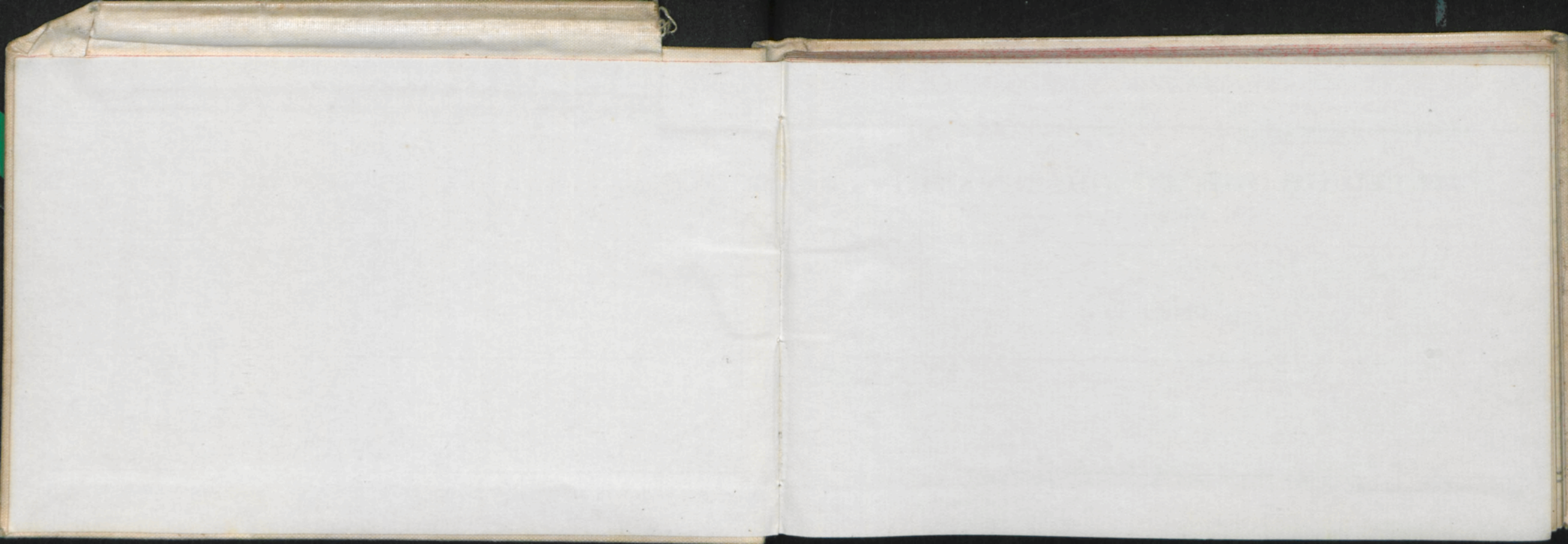
1911 - 1912

BAR 762.  
SLING  
TERM. II

BEA.  
30







BRITISH ANTARCTIC EXPEDITION 1901-1904  
 METEOROLOGICAL OBSERVATIONS  
 INSTRUMENTS IN USE AND TESTS

TAKEN AT		On the 13th March 1912	
DURING		During 1912	
BY		By Lt. Robert Scott	
POSITION OF STATION		East	
HEIGHT OF BAROMETER		Height of Barometer	
HEIGHT OF STATION		Height of Station	
TEMPERATURE		Temperature	
WIND		Wind	
CLOUDS		Clouds	
PRECIPITATION		Precipitation	
HUMIDITY		Humidity	
FROST		Frost	
SUNSHINE		Sunshine	
MOON		Moon	
STARS		Stars	
PLANETS		Planets	
COMETS		Comets	
AURORA		Aurora	
MAGNETISM		Magnetism	
ELECTRICITY		Electricity	
OTHER		Other	



BRITISH ANTARCTIC EXPEDITION, 1910.

## METEOROLOGICAL OBSERVATIONS

TAKEN AT

On the Barrier.

1912  
During ~~1911~~

By 2nd Return Party.

Lieut.  
ERGR EVANS  
Observer.

Position of Station: Lat. \_\_\_\_\_ Long. \_\_\_\_\_

Height of Barometer Cistern above Mean Sea Level \_\_\_\_\_ feet.

## INSTRUMENTS IN USE, AND THEIR CORRECTIONS.

BAROMETER, No. 762, COMPARED WITH STANDARD at Cape Evans in 1910 Oct 21 '11

Correction  
required

Bar was adjusted to agree  
with standard with all  
corrections including gravity  
applied.

### THERMOMETERS

Shing II

Dry Bulb, No. <u>91</u>	<u>+1.0</u>	<u>+0.5</u>	<u>+0.5</u>	<u>0.0</u>	<u>-0.5</u>	<u>-1.0</u>
Max. in Shade, No. _____						
Min. in Shade, No. _____						
Max. in Sun, No. _____						
Min. on Snow, No. _____						
No. _____						
No. _____						

Correction applied

< 0. 0.0

> 0. -0.5



**WEATHER.**—Initials of the Beaufort Notation and Symbols adopted by international agreement for recording phenomena of weather.

b.	blue sky	r.	● rain.	~	glazed frost.
c.	detached clouds.	p.	passing showers.		
o	overcast.	d.	drizzling rain.	☞	gale.
m.	☰ <sup>o</sup> mist.	e.	wet air without rain falling.	q.	squally.
f.	☰ fog.	s.	* snow.		
g.	gloomy.	+	snow drift.	○	solar corona.
u.	ugly, threatening.	☒	snow lying.*	⊕	solar halo.
z.	∞ dust haze or smoke.	←	ice crystals.	☾	lunar corona.
v.	unusual visibility.	h.	▲ hail.	☾	lunar halo.
t.	⊥ thunder.	Δ	soft-hail.		
l.	< lightning.	w.	☾ dew.	(	rainbow.
K	thunderstorm.	x.	⊥ hoar frost.	☰	aurora.
		V	silver-thaw. rime.		

\* More than half the country in sight round the station covered with snow.

NOTE.—Do not use "h" for haze, nor "sh" for showers.

A line under an initial or the exponent "2," appended to a symbol, denotes intensity thus h or ▲<sup>2</sup> indicates heavy hail, ☰<sup>o</sup> indicates light fog or mist.

**BEAUFORT WIND SCALE.**

Beaufort Number.	Description of Wind.	Equivalent velocity in miles per hour.
0	Calm.	0
1	} Light Breeze.	2
2		5
3		10
4	} Moderate Breeze.	15
5		21
6		27
7	} Strong Wind.	35
8		42
9		50
10	} Storm forces	59
11		68
12	Hurricane.	above 75



# INSTRUCTIONS.

**Barometer.**—The aneroid barometer should be lightly tapped before taking a reading.

**Hypsometer.**—Only pure water obtained from snow to be used. No water should be allowed to splash into the bulb of the thermometer during an observation.

**Thermometer.**—The aluminium sling thermometer should be allowed to remain in the open for at least ten minutes before a reading is taken in order that the bulb may acquire a temperature near that of the air. When an observation is to be made the thermometer should be opened and swung for a minute; the swinging must then be repeated until three readings have been obtained, each giving the same temperature. The final steady reading should then be entered in the note book.

**Wind.**—All wind directions must be "true" and not "magnetic."

**Clouds.**—The proportion of the sky covered by cloud should be indicated on a numerical scale running from 0, cloudless, to 10, completely overcast. The numbers given are to refer solely to the amount of the sky covered and not to the density, height or other quality of the cloud. Fog must be regarded as a cloud at ground level, and 10 must accordingly be entered for the amount of cloud on foggy days. If clouds can be seen through a thin mist, the amount of real cloud should be entered in the column and a note made under "Remarks."

## BRITISH ANTARCTIC EXPEDITION, 1910.

### REMARKS.

The following are the chief cloud forms:

Cirrus	...	(Ci)	...	} High.
Cirro-Stratus	...	(Ci-St)	...	
Cirro-Cumulus	...	(Ci-Cu)	...	
Alto-Cumulus	...	(A-Cu)	...	
Alto-Stratus	...	(A-St)	...	} Low.
Strato-Cumulus	...	(St-Cu)	...	
Cumulus	...	(Cu)	...	
Stratus	...	(St)	...	
Nimbus	...	(Nb)	...	

Enter cloud directions as you would wind directions, *i.e.*, the direction from which they are coming.

**Weather.**—The Beaufort notation given on page 3 should be used.

**Remarks.**—Haloes and any unusual phenomena should be noted. It is also desirable that general topographical notes should be added, as for instance, "In valley running N W.," "To-day's camp higher than yesterday's," etc.



BRITISH ANTARCTIC EXPEDITION, 1910.

OBSERVER'S  
INITIALS.

REMARKS.







DAY.	HOUR	POSITION.		Bar	Hyps-ometer	Dry Bulb	Wind Dir. True	Wind Force	Weather	CLOUD.			
		Lat.	Long.							Amount	Kind	Direction from upper lower	
8 Jan	8 PM	86° 17'	161° 0'	—	—	-2°	SE	6	0 <del>X</del> *	10	st	—	SE
9 Jan	8 AM	86° 17'	161°	—	—	+2°	SE	6	0 <del>X</del> *	10	st	—	SE
	1 PM	86° 10'	161° 0'	—	—	+4°	ESE	6	bc <del>X</del> *	5	ci	ESE	ESE
	8 PM	86° 3'	161° 0'	—	—	+3°	ESE	5	0 <del>X</del> *	10	st	—	ESE
10 Jan	7 AM	86° 3'	161° 0'	—	—	+1°	ESE	4	0 *	10	st	—	ESE
	1 P.M.	86° 0'	160° 20'	—	—	+2°	ESE	4	0 <del>X</del> *	10	st	—	ESE
	8 PM	85° 52'	161° 0'	—	—	+1°	E	3	0 <del>X</del> *	10	st	—	—
11 Jan	7 AM	85° 52'	161° 0'	—	—	+4°	ENE	3	0	10	st	—	—
	1 PM	85° 45'	161° 10' E	—	—	-2°	NE	2	0	10	st	—	—
	8 PM	85° 38'	161° 20' E	—	—	-8°	S	2	bc	1	ci-st	—	—
12 Jan	7 AM	85° 38'	161° 20' E	—	—	-11°	SSE	2-3	bc	3	ci-st	—	—
	1 PM	85° 24'	162° 0' E	—	—	-10°	SSE	4	bc	4	ci-st	—	—

# BRITISH ANTARCTIC EXPEDITION, 1910.

OBSERVER'S  
INITIALS.

## REMARKS.

Blizzard commenced about 7 P.M.

Blizzard

10.0 am sky breaking. Cirrus ~~SE~~ ESE.

Blizzard throughout afternoon. { Minimum not recorded as this drifted up. }  
Weather cleared at 3 am but after that became thick.

2 sky occasionally breaking in patches.

8.0 am Patchy.

Min Temp - 4.8°

small patch of blue sky to S.

Low bank of ci-st round horizon.

Min Temp - 16.2°



DAY.	HOUR	POSITION.		Bar	Hyps- omet- er	Dry Bulb	Wind Dir. True	Wind Force	Weather	CLOUD.			
		Lat.	Long.							Amount	Kind	Direction from	
												upper	lower
12 Jan	8 PM	85° 20'	163° 0'	—	—	-8.2	SSE	3	bc	4	ci-st	—	—
13 Jan	7 AM	85° 20'	163° 0'	—	—	-8.5	SSE	3-4	bc	4	ci-st	SSE	—
	1 PM	85° 15'	163° 30'	—	—	-6.0	SSE	3	bc	5	ci-st	—	—
	8:30 PM	85° 16'	163° 30'	—	—	-3.5	SSE	4	bc	5	ci-st	—	—
14 Jan	7 AM	85° 10'	163° 30'	—	—	-1.5	SSE	5	bc →	5	ci-st	SSE	—
Depart	3 PM	85° 47'	163° 4'	—	—	+3.5	SSE	1	bc	6	ci-st	SSE	S
	8 PM	85° 2'	164° 0'	—	—	+1.0	SSE	1-2	0	10	ci-st	ENE	—
15 Jan	6 AM	85° 2'	164° 0'	—	—	-6.5	SSE	3-4	bc	3	ci-st	—	—
	1 PM	84° 57'	164° 20'	—	—	+6.0	S	4	bc	1	ci-st	S	SW
	8 PM	84° 49'	165° 0'	—	—	+14.5	Calm	0	bc	2	ci-st	—	—
16 Jan	6 AM	84° 45'	165° 0'	—	—	+1.5	SSE	2	bc	1	st	—	—
—	1 PM	84° 40'	165° 20'	—	—	—	SSE	1	bc	1	st	—	—

# BRITISH ANTARCTIC EXPEDITION, 1910.

OBSERVER'S  
INITIALS.

## REMARKS.

Min Temp -10.5°	EL
Min Temp -8.5°	EL
Small patch of blue sky visible down glacier	EL
Min Temp -7.2°	EL
at 9 am - wind in force 6 with drift, but decreased by 10-30	EL
Roll cumulus over Dominion Range	EL
Min Temp -0.5°	EL



DAY.	HOUR	POSITION.		Bar	Hyps- omet- er	Dry Bulb	Wind Dir. True	Wind Force	Weather	CLOUD.			
		Lat.	Long.							Amount	Kind	Direction from upper lower	
Jan 16	8 PM	84° 23'	167° 6' E	—	—	+15.6	SE	6	bq	4	ci	S	3
Jan 17	6 AM	84° 33'	167° 6'	—	—	+1.5	SE	6	bq	—	—	—	—
	1 PM	84° 29'	168° 0'	—	—	+7.5	SSE	6	bq	1	ci-st	—	—
	10 PM	84° 28'	169° 0'	—	—	+8.5	SSE	6-7	bq	3	st	—	—
Jan 18	6 AM	84° 28'	170° 0'	—	—	+3.5	SSE	7	bq	3	st	—	—
	1 P.M.	84° 25'	170° 10'	—	—	+13.5	SSE	6-7	bq	1	st	—	—
Mid.	<del>6 AM</del>	84° 24'	170° 23'	—	—	+13	SE	5	bc	1	st	—	—
Jan 19	6 AM	—	—	—	—	+13.5	SE	5-6	bc	1	ci-st	—	—
	1.30 PM	84° 19'	170° 30'	—	—	+18	st air	1	bc	1	ci-st	S	—
<div style="text-align: center;"> <p>+11</p> <p>Too Snow Blind To observe</p> </div>													

BRITISH ANTARCTIC EXPEDITION, 1910.		OBSERVER'S INITIALS.
REMARKS.		
Min. Temp $-1.5^{\circ}$		EL
Clear cloud hanging in the valleys of the Beardmore		EL
Min Temp $+3.5^{\circ}$		EL
Very strong squalls during forenoon.		EL
Min Temp $+8.5^{\circ}$		EL







DAY.	HOUR	POSITION.		Bar	Hyps- omet- er	Dry Bulb	Wind Dir. True	Wind Force	Weather	CLOUD.			
		Lat.	Long.							Amount	Kind	Direction from	
												upper	lower
Jan 26	8 AM	82° 24' S	170° 31' E			+28.5	S	5-6	bcy	9	ci ci-an st ci-st	E	S
27	1 PM	82° 25'	170° 31'			+23	S	2-1	bc	3	ci ci-st	S	-
	9 PM	82° 20'	170° 30'			+17	Calm	0	bm	-	-	-	-
Jan 28	7 AM	82° 20'	170° 30'			+19	1 <sup>st</sup> Var. gins		bc	1	ci-st	-	-
28	1 PM	82° 14'	170° 30'			+15	S	2 <sup>1-2</sup>	b	-	-	-	-
	9 PM	82° 8'	170° 29'			+10	S	3	b	-	-	-	-
Jan 29	8 AM	-	-			+15	S	3	bm	1	st	-	S
	1 PM	81° 57'	170° 28'			+20	SSE	3	bc	5	ci-an ci-st	NW	
	9 PM	81° 49'	170° 28'			+18	SSE	3	bc	3	ci-an ci-st	NW	S
Jan 30	6 AM	81° 49'	170° 28'			+19	SSE	5	om	10	st	-	S
	1 PM	81° 42'	170° 25'			+18	SSE	3	om	10	st	-	-
	9 PM	81° 36'	170° 13'			+20	SSE	1	o	10	st	-	-

# BRITISH ANTARCTIC EXPEDITION, 1910.

OBSERVER'S

INITIALS.

## REMARKS.

Mist Hanging over the land.  
Min Temp +15°

Min Temp +10°

Min Temp +9°

E2

E2

E2

E2

E2

E2

E2

E2

E2

E2

E2

E2



DAY.	HOUR	POSITION.		Bar	Hyps- omet- er	Dry Bulb	Wind Dir. True	Wind Force	Weather	CLOUD.			
		Lat.	Long.							Amount	Kind	Direction from	
												upper	lower
Jan 31 <sup>st</sup>	7 <sup>am</sup>	81° 36'	170° 13'			+ 23.5	L <sup>5</sup> S <sup>5</sup> air		og	10	st	-	-
	1 P.M.	81° 29'	170° 10'			+ 22	Sky E	2	og	10	st	-	-
	8 P.M.	81° 23'	170° 10'			+ 15	Calm	0	bnc	3	cu-st	-	NW
Feb 1 <sup>st</sup>	6 A.M.	-	-			+ 3.8	SSW	3	bc	1	ci-st	-	-
	0.30 <sup>pm</sup>	81° 16'	170° 1'			+ 12.5	SW	1-2	bc	1	ci-st	-	WSW
	7.0	81° 9'	170° 0'			+ 9	SW	1-2	bc	1	st	-	SW
Feb 2	6.0 <sup>am</sup>	-	-			0	Calm	0	bc	3	st	-	-
	1.0 <sup>pm</sup>	81° 3'	169° 45'			+ 15	SE	1-2	o*	10	st	-	NW
	7.0	80° 57'	169° 40'			+ 14	S	1-2	o*	10	st	-	NW
Feb 3	6.0 <sup>am</sup>	-	-			+ 13.5	WSW	4	o	10	st	-	WSW
	1 P.M.	80° 52'	169° 32'			+ 15	WSW	4-5	o*	10	st	-	-
	8 P.M.	80° 45'	169° 30'			+ 16.5	WSW	5-7	og*	10	st	-	-

# BRITISH ANTARCTIC EXPEDITION, 1910.

OBSERVER'S  
INITIALS.

## REMARKS.

Min Temp +16.5°	82.
Sky occasionally breaking to SE! & E!	81.
3.0 Sky breaking to NW. Cu-st moving from NW.	82.
Min Temp + 2.8°	82.
{ During forenoon A-st clouds working over sky from WSW	82.
{ Ice crystals falling.	82.
Low mist hanging round horizon. Min. Temp -3°	82.
Min. Temp + 12°	82.
Driving snow throughout afternoon	82.
Blizzard.	82.



DAY.	HOUR	POSITION.		Bar	Hyps- omet- er	Dry Bulb	Wind Dir. True	Wind Force	Weather	CLOUD.			
		Lat.	Long.							Amount	Kind	Direction from	
												upper	lower
Feb 4 <sup>E</sup>	6 AM	80° 45'	169° 30'			+ 12.5	WSW	3	o*	10	st	—	—
	1 PM	80° 40'	169° 23'			+ 16	lt. WSW	ain	bc	1	st	—	NW
	9 PM	80° 32'	169° 23'			+ 4	NW	1-2	bm	1	st	—	—
Feb 5 <sup>E</sup>	6 AM	—	—			+ 4.2	NW	1-2	bm	1	st	—	—
	1 PM	80° 26'	169° 22'			+ 2.5	SW	3	bc	5	st ci-st	—	WSW
	7 PM	80° 20'	169° 22'			+ 2.5	Calm	0	b	—	—	—	—
Feb 6 <sup>E</sup>	6 AM	—	—			+ 9.5	S	3-4	omx	st	10	—	—
	1 PM	80° 13'	169° 22'			+ 6.0	SSW	2	bc	ci-st	1	N	—
	7 PM	80° 5'	169° 22'			+ 6.3	Calm	0	b	—	—	—	—
Feb 7 <sup>E</sup>	6 A.M.	—	—			+ 3	Calm	0	b	—	—	—	—
	1 P.M.	79° 59'	169° 22'			+ 8.0	Calm	0	bc	—	—	—	—
	7 PM	79° 52'	169° 22'			+ 1.8	SW	1-2	b	—	—	—	—

# BRITISH ANTARCTIC EXPEDITION, 1910.

OBSERVER'S  
INITIALS.

## REMARKS.

Min Temp + 9.5 Wind and drift decreased 4.30 am. E2

9 am. sky breaking. 10.0 sky clear except for stratus 2 to SE E2

1 W. E2

Min Temp - 3. Low mist on horizon. E2

Thin Stratus moving rapidly across sky from WSW, alt. forecast. E2

Low mist E S W! 3.0 PM Particular S W! E2

Min Temp - 1° E2

Cloud rapidly dispersed between 7 am & 9 am & sky cleared. E2

E2

Mr. Discovery in sight. E2

Small patch of ci-st to NW. E2

— — — E2



DAY.	HOUR	POSITION.		Bar	Hyps- omet- er	Dry Bulb	Wind Dir. True	Wind Force	Weather	CLOUD.			
		Lat.	Long.							Amount	Kind	Direction from	
												upper	lower
Feb 8 1/2	3 AM	79° 52'	169° 22'	—		+6°	WNW	1-2	b	0	—	—	—
	1 PM	79° 46'	169° 22'	—		+10°	SW <sup>h</sup> W	2	bc	2	ci ci-st	SW <sup>h</sup> W	—
	7 PM	79° 40'	169° 22'	—		+13°	SW <sup>h</sup> W	2-3	bc	8	cu-st ci-st ci-cu	SW	SW
Feb 9 <sup>th</sup>	6 AM	—	—	—		+3°	L.W <sup>h</sup> air	—	bc	6	cu-st	WSW	—
	1 PM	79° 33'	169° 22'	—		+12°	W	1-2	bc	3	alt-st	WSW	—

# BRITISH ANTARCTIC EXPEDITION, 1910.

## REMARKS.

OBSERVER'S  
INITIALS.

Min Temp -4°

Clouds radiating from SW

Min Temp -10°

Observer too bad with sneezing to continue observations - sorry!

EL







DAY. HOUR POSITION  
 Lat. Long. Bar Hyps-  
 omet- Dry  
 er Bulb Wind  
 Dir. True Wind  
 Force Weather  
 CLOUD.  
 Amount Kind Direction from  
 upper lower

BRITISH ANTARCTIC EXPEDITION, 1910.

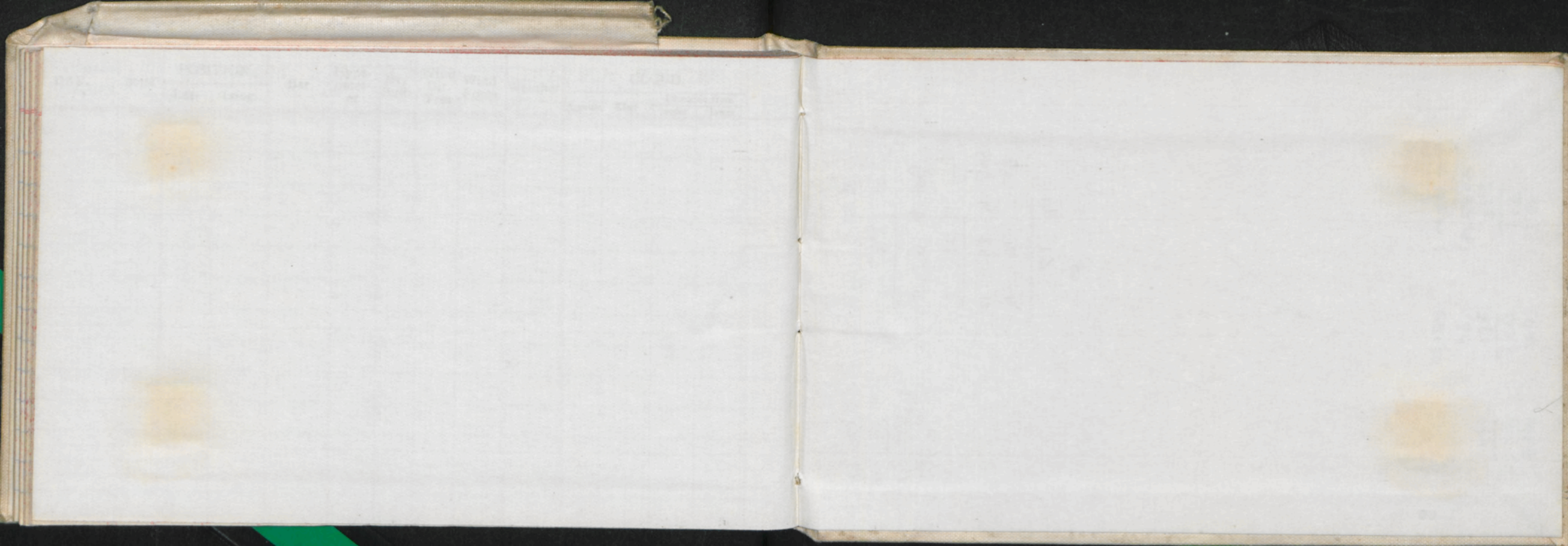
REMARKS.

OBSERVER'S  
INITIALS.



[illegible]







$\begin{array}{r} 64\frac{1}{2} \\ 170\frac{1}{2} \\ \hline 235 \end{array}$   
 N 125 W  
 S 55 W }

$\begin{array}{r} 904 \\ 170\frac{1}{2} \\ \hline 261 \\ 99 \\ \hline 360 \end{array}$   
 S 81 W

$\begin{array}{r} 195\frac{3}{4} \\ 170\frac{1}{2} \\ \hline 366 \end{array}$

Ch 8 0 0  
 Er 6 0 0  
 Gmt 8 6 0

$\begin{array}{r} 170 \\ 48 \\ \hline 122 \\ 1123 \\ \hline 1248 \end{array}$

Long 11 23 12

Smt 19 29 12  
 ET 12 16-

19 17  
 43-



