



Met Office

Met Office 3-month Outlook

Period: February –April 2018 Issue date: 26.01.18

The forecast presented here is for February and the average of the February-March-April period for the United Kingdom as a whole. The forecast for February will be superseded by the long-range information on the public weather forecast web page (www.metoffice.gov.uk/public/weather/forecast/#?tab=regionalForecast), starting from 2 February 2018.

This forecast is based on information from observations, several numerical prediction systems and expert judgement.

SUMMARY – PRECIPITATION:

For February, below-average precipitation is more likely than above-average precipitation. For February-March-April as a whole, the chances of above- and below-average precipitation are close to normal.

The probability that UK-average precipitation for February-March-April will fall into the driest of our five categories is 20% and the probability that it will fall into the wettest of our five categories is between 15% and 20% (the 1981-2010 probability for each of these categories is 20%).

CONTEXT:

As discussed in the temperature section, there are competing global influences on UK weather in February. Overall, however, seasonal prediction systems show an increased likelihood of weather patterns that reduce the normal progress of moist Atlantic air across the UK, resulting in an increased chance of drier-than-normal conditions (see

left-hand graph in figure P2). Over the February-March-April period, forecast systems show a more usual range of potential weather patterns, resulting in chances of above- and below-average precipitation that are close to normal (see right-hand graph in figure P2).

Fig P1

3-month UK outlook for precipitation in the context of the observed annual cycle

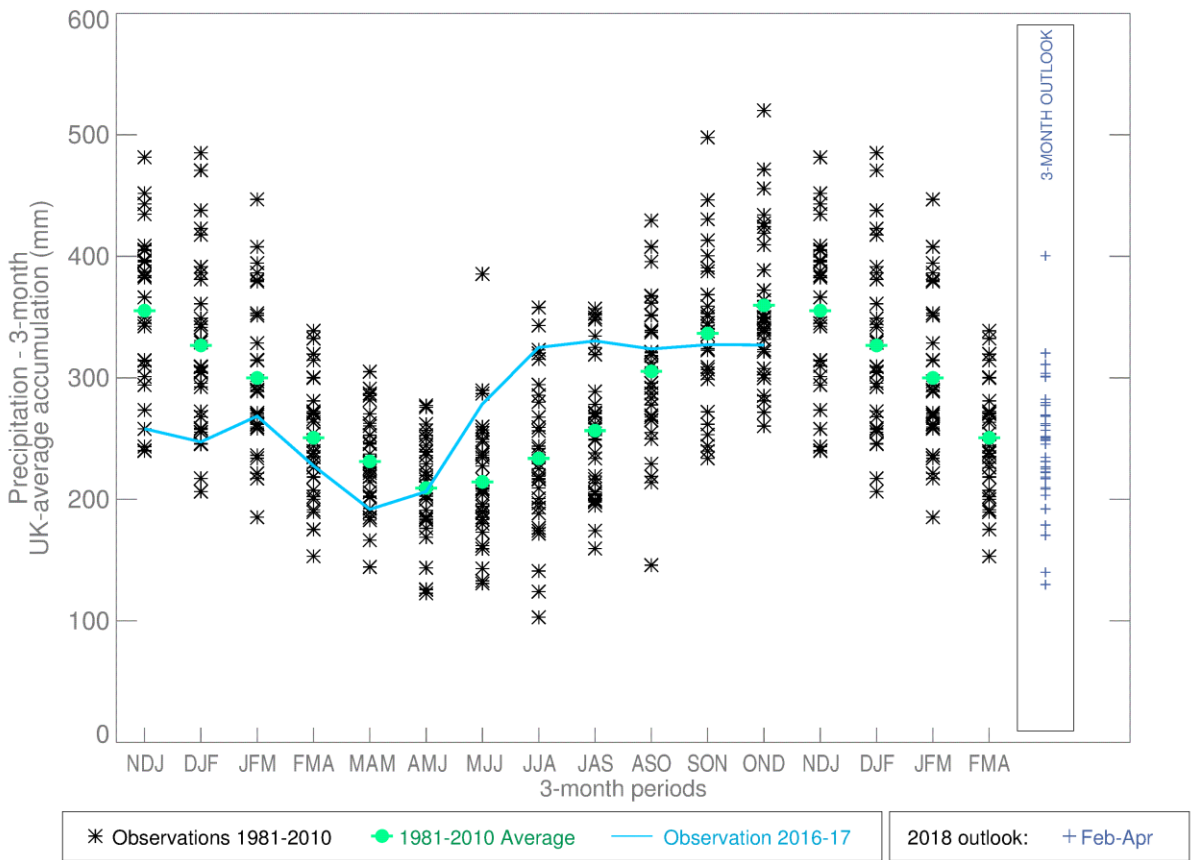


Fig P2

1-month and 3-month UK outlook for precipitation in the context of observed climatology

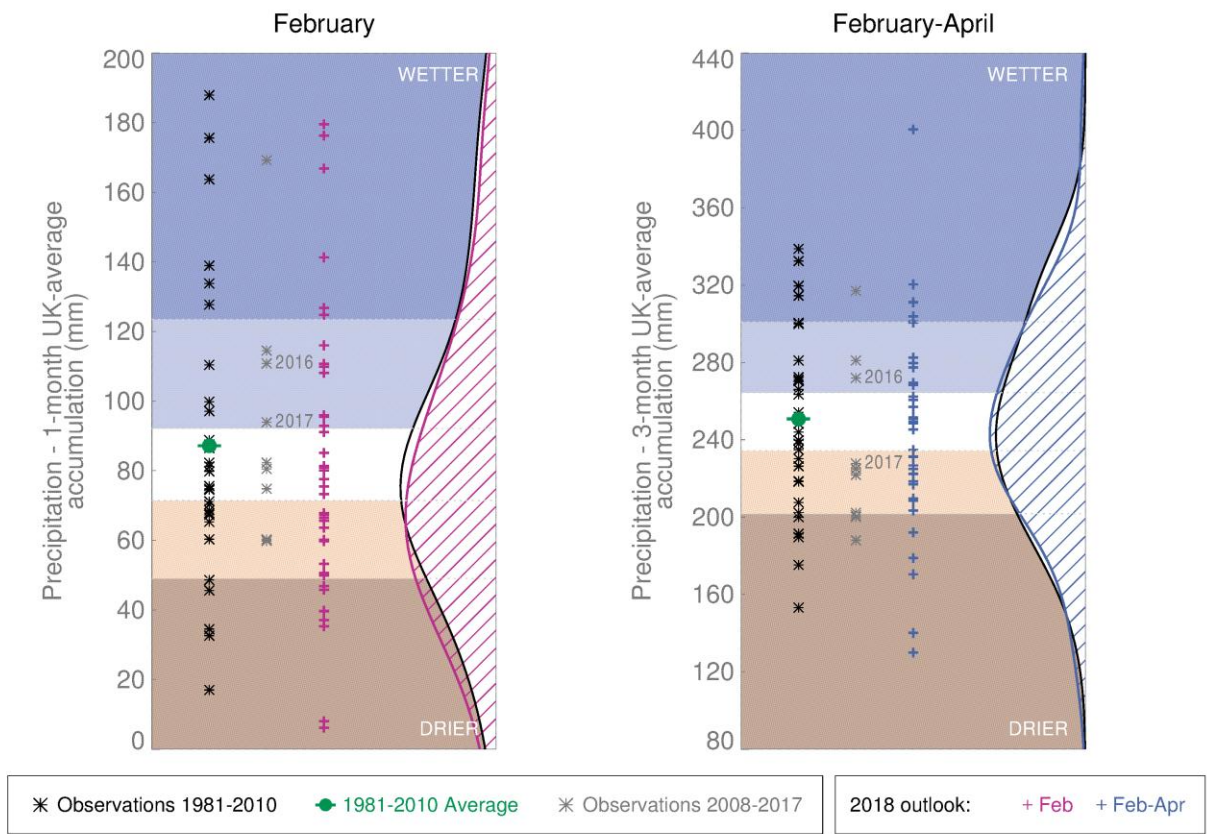
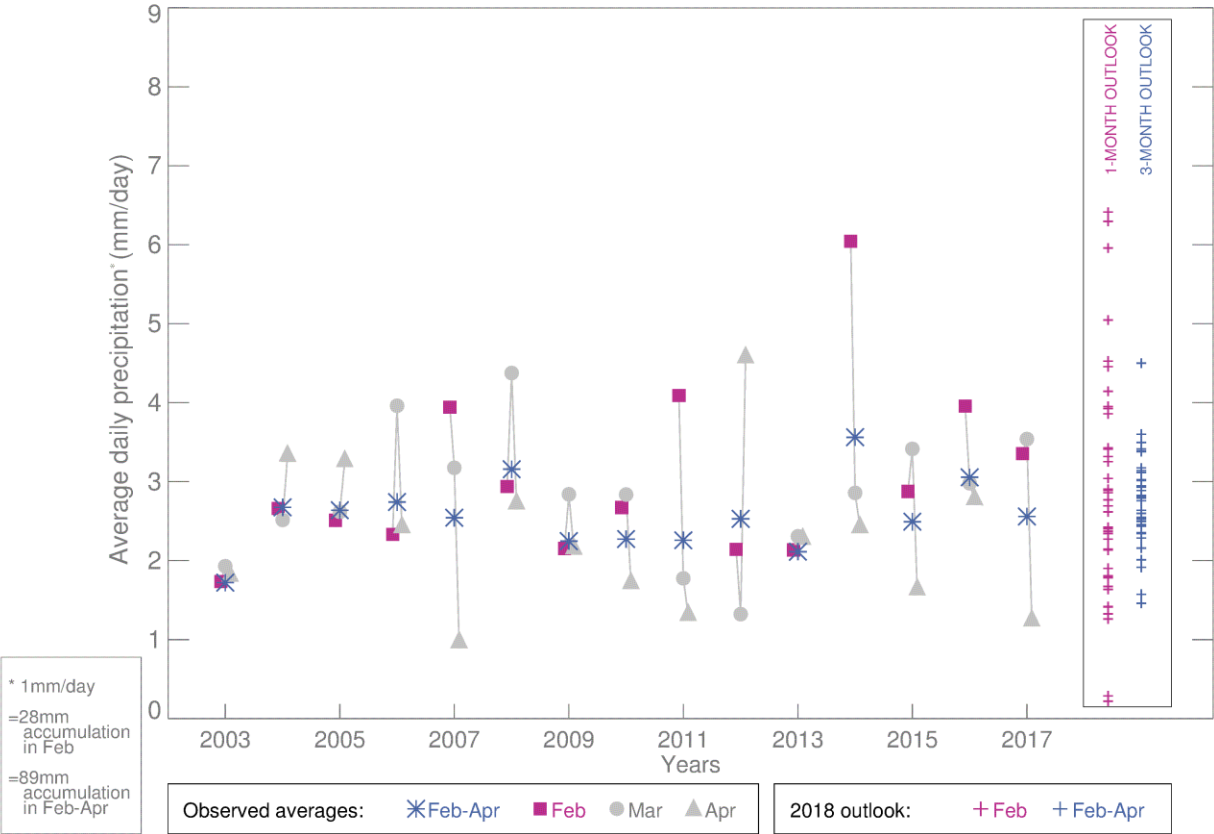


Fig P3

1-month and 3-month UK outlook for precipitation in the context of recent climatology: year-to-year and within-season variability



This Outlook provides an indication of possible temperature and rainfall conditions over the next 3 months. It is part of a suite of forecasts designed for contingency planners. The Outlook should not be used in isolation but should be used with shorter-range and more detailed (30-day, 15-day and 1-to-5-day) forecasts and warnings available to the contingency planning community from the Met Office.