

RAINFALL AT *Allenheads*

Lat..... Lon..... County of *Northumberland*
Rain Gauge, by..... Observer *Matthew Varty Esq.*

Diameter8										
Height9 π			π	4	7	.4				
Altitude	1369		1360	1353			1360		1353		
YEAR	1870	1871	1872	1873	1874	1875	1876	1877	1878	1879	MEANS.
January.....	4.46	3.17	6.21	6.32	4.56	6.08	1.95	7.89	5.05	1.28	4.697
February.....	4.76	4.49	4.94	1.53	2.59	2.61	6.87	4.76	1.82	5.09	3.946
March.....	2.08	2.59	5.44	3.10	4.09	1.47	6.67	6.10	2.32	3.33	3.719
April.....	1.79	3.05	5.13	1.26	2.75	1.68	4.35	4.47	3.05	2.24	2.977
May	3.14	1.52	3.91	2.64	2.32	3.03	2.38	3.65	4.68	2.33	2.960
June.....	2.03	3.68	4.20	1.89	1.54	2.53	3.19	2.21	2.72	5.35	2.934
July82	4.30	4.14	2.34	1.88	6.02	2.04	5.51	1.48	7.05	3.558
August.....	2.39	2.34	3.44	4.05	4.80	1.99	3.26	10.35	6.66	4.70	4.398
September.....	3.08	6.76	6.02	3.11	4.31	4.20	5.42	2.18	4.49	1.36	4.093
October.....	9.97	4.29	8.08	3.68	5.72	6.24	2.20	4.78	4.49	1.93	5.138
November.....	2.42	3.00	7.39	3.51	4.52	7.78	5.16	6.26	5.91	1.32	4.727
December.....	7.33	3.46	6.96	3.21	6.76	5.15	10.60	3.77	5.05	1.11	5.340
TOTALS	44.27	42.65	65.86	36.64	45.84	48.78	54.09	67.93	47.72	37.09	48.487

1874 "The gauge is in a back yard surrounded by houses & a wall 9ft high" which is 6ft distant

St. Peter's church Allenheads 2 miles N.W.

Sta. No. 015338. Cannot be reckoned as Homogeneous with Sta. No. 015339

Daily available Jan & Feb 1879

low

RAINFALL AT *Shotley House*

70

Lat.

Lon.

County of *Northumberland*

Rain Gauge, by

Observer *M^r R Inglis*

α

Diameter								5	.		
Height								2	2.6		
Altitude									340		
Year	1870	1871	1872	1873	1874	1875	1876	1877	1878	1879	MEANS.
January								5.41	2.18		
February								1.77	.97		
March								4.40	.58		
April								5.37	3.19		
May								2.71	3.82		
June								1.30	2.46		
July								4.31	.57		
August								7.03	5.65		
September ..								1.43	1.53		
October								2.88	1.98		
November ..								2.02	5.75		
December ..								1.61	1.94	#	
TOTALS ..								40.24	30.62		

1877 High trees 12 yds to N wall Fenyard N.W.

Whitfield Northern Ireland

70

RAINFALL AT Whitfield Haydon Bridge
2

Lat..... Lon..... County of Northern Ireland

..... Rain Gauge, by..... Observer Rev. J. M. Mason.....

Diameter											
Height											
Altitude											
YEAR	1870	1871	1872	1873	1874	1875	1876	1877	1878	1879	MEANS.
January.....	2.31										
February											
March											
April.....											
May											
June											
July											
August											
September.....											
October.....											
November.....											
December.....											
TOTALS											

C

RAINFALL AT *Allenheads*

Lat..... Lon..... County of...*Northumberland*
.....Rain Gauge, by..... Observer *Matthew Varty Esq.*

Diameter	/										
Height	<i>6 9/16</i>										
Altitude	<i>1374</i>		<i>1360</i>								
YEAR	1870	1871	1872	1873	1874	1875	1876	1877	1878	1879	MEANS.
January.....	<i>4.38</i>		<i>7.80</i>								
February.....	<i>5.05</i>		<i>5.66</i>								
March	<i>2.13</i>		<i>5.07</i>								
April.....	<i>1.90</i>		<i>5.90</i>								
May	<i>3.37</i>		<i>4.43</i>								
June.....	<i>2.04</i>		<i>4.37</i>								
July	<i>2.86</i>		<i>4.41</i>								
August.....	<i>2.53</i>		<i>3.65</i>								
September.....	<i>3.42</i>		<i>6.55</i>								
October.....	<i>+ 10.73</i>		<i>8.84</i>								
November.....	<i>2.47</i>		<i>8.58</i>								
December.....	<i>7.64</i>		<i>7.86</i>								
TOTALS	<i>46.52</i>		<i>73.12</i>								

1873 Gauge out of order.

RAINFALL AT *Baywell*

Lat.....

Lon.....

County of.....

Northernumberland

Rain Gauge, by.....

Observer

Mr. John Dawson

Diameter8										
Height6										
Altitude	87.										
YEAR	1870	1871	1872	1873	1874	1875	1876	1877	1878	1879	MEANS.
January.....	1.53	1.50	4.30	2.14	2.65	2.58	.74	4.50	4.00	1.58	2.552
February.....	1.89	2.46	3.72	1.65	2.28	1.83	2.07	1.90	1.24	3.28	2.232
March.....	1.16	1.20	4.60	2.18	1.47	.98	2.68	4.78	1.32	1.99	2.236
April.....	.64	3.40	3.80	1.01	1.61	1.09	3.14	4.61	2.87	2.43	2.460
May30	.90	1.73	2.86	2.85	1.21	1.76	3.29	3.73	2.04	2.117
June.....	1.61	3.60	2.57	1.62	1.01	2.11	2.98	1.37	3.15	4.48	2.450
July71	4.40	4.60	2.22	1.72	4.21	1.82	3.65	.50	3.84	2.767
August.....	2.17	.77	4.18	2.49	2.60	4.19	2.01	7.71	5.21	4.01	3.534
September.....	1.52	6.48	5.20	2.19	2.63	2.92	3.67	1.33	1.79	1.07	2.880
October.....	5.18	3.30	5.83	2.85	2.18	5.44	1.55	3.17	1.58	1.05	3.213
November.....	2.44	3.28	5.13	2.07	4.28	6.03	4.10	2.11	5.99	2.41	3.784
December.....	6.19	2.24	5.50	.72	5.06	2.06	9.11	2.50	3.62	.66	3.766
TOTALS	25.84	33.53	57.16	24.00	30.34	34.65	35.63	40.92	35.00	28.84	3.991

1878 Trees 25ft high & 20 yds distant

1879 Apple trees 15ft high 36 ft. N & S.

Wall 6 " " 60 " S E.

Hedge 4 " " 40 " W.

St. Peters church 300 yds W.

RAINFALL AT *Wylam Hall*

Lat.

Lon.

County of *Northumberland*

Rain Gauge, by..... Observer *Geo. C. Atkinson Esq.*

Diameter	<input checked="" type="checkbox"/>										
Height	<i>4</i>	<i>0</i>	<i>5</i>	<i>0</i>	<i>4</i>						
Altitude	<i>96</i>										
YEAR	1870	1871	1872	1873	1874	1875	1876	1877	1878	1879	MEANS.
January.....	<i>1.55</i>	<i>1.26</i>	<i>3.16</i>	<i>1.27</i>	<i>1.41</i>						
February.....	<i>1.94</i>	<i>1.54</i>	<i>2.42</i>	<i>1.27</i>	<i>1.36</i>						
March.....	<i>1.35</i>	<i>.88</i>	<i>3.48</i>	<i>1.59</i>	<i>.79</i>						
April.....	<i>1.01</i>	<i>3.61</i>	<i>3.36</i>	<i>.50</i>	<i>1.72</i>	<i>#</i>					
May	<i>72</i>	<i>.88</i>	<i>1.63</i>	<i>2.40</i>							
June.....	<i>1.40</i>	<i>3.13</i>	<i>2.08</i>	<i>2.55</i>							
July	<i>.63</i>	<i>2.85</i>	<i>4.61</i>	<i>1.67</i>							
August.....	<i>2.39</i>	<i>.87</i>	<i>4.52</i>	<i>1.74</i>							
September.....	<i>1.07</i>	<i>5.28</i>	<i>3.91</i>	<i>1.47</i>							
October.....	<i>4.81</i>	<i>2.78</i>	<i>5.39</i>	<i>2.54</i>							
November.....	<i>2.73</i>	<i>2.11</i>	<i>4.88</i>	<i>1.80</i>							
December.....	<i>4.83</i>	<i>1.50</i>	<i>5.20</i>	<i>.36</i>							
TOTALS	<i>24.43</i>	<i>26.69</i>	<i>44.64</i>	<i>19.16</i>							

C C C

RAINFALL AT *Haltwhistle Unthank Hall*

70

Lat.....

Lon.....

County of.....

Northumberland

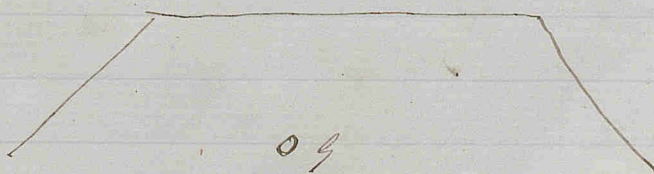
.....Rain Gauge, by.....

Observer

Bar^d Lion Brown

Diameter5										
Height9										
Altitude	380.										
YEAR	1870	1871	1872	1873	1874	1875	1876	1877	1878	1879	MEANS.
January.....	3.22	2.33	3.75	6.34	3.48	4.58	.84	6.20	3.99	.67	3.540
February.....	2.38	2.17	2.60	.61	1.77	1.59	3.85	3.38	2.89	2.52	2.376
March.....	1.29	1.63	2.86	1.86	3.82	.81	5.14	3.43	1.94	2.55	2.533
April.....	.83	3.45	2.79	.68	2.75	1.23	2.65	3.30	2.49	2.00	2.217
May	1.50	1.27	2.82	1.95	1.95	2.48	1.00	1.88	4.35	2.28	2.148
June.....	2.49	2.27	3.52	1.40	1.68	2.29	2.04	2.56	3.52	4.28	2.605
July.....	1.46	4.63	4.25	1.81	2.48	4.41	1.34	3.77	1.70	4.51	3.036
August.....	1.35	2.34	4.54	4.61	5.02	1.97	3.26	9.47	6.57	4.54	4.367
September.....	2.32	4.40	4.87	2.56	3.96	3.79	2.83	1.78	3.57	1.53	3.161
October.....	5.14	2.78	5.47	4.02	4.77	2.86	2.99	4.37	3.01	1.77	3.718
November.....	1.80	1.81	4.77	2.44	4.73	5.52	3.19	5.03	3.53	1.78	3.460
December.....	3.12	3.93	4.05	1.89	3.13	2.55	7.28	2.63	2.59	2.33	3.350
TOTALS	26.90	33.01	46.29	30.17	39.54	34.08	36.41	47.80	40.15	30.76	36.511

1871 g stands in an acre of enclosed ground quite free from trees or walls



Kilnery 10ft high 33ft N.W.

Haltwhistle church 2 miles N.W.

70

County of Northumberland

Observer

[illegible]

RAINFALL AT *Shotton Hall*

Lat.

Lon.

County of *Northumberland*

Rain Gauge, by

Observer

Mr. J. Coulson

Diameter5
Height3	7	.3	.9	.5	.
Altitude	312	.	315 ⁺
YEAR	1870	1871	1872	1873	1874	1875	1876	1877	1878	1879	MEANS.
January.....	1.75	1.11	3.96	2.05	1.58	2.34	.75	5.12	2.70	1.36	.
February.....	2.06	1.89	2.79	1.95	1.78	1.74	2.60	2.14	1.35	2.60	.
March.....	1.66	1.30	3.68	2.55	1.35	.63	2.87	5.04	.86	1.57	.
April.....	-.70	2.72	2.95	.86	1.62	1.28	3.57	5.96	3.45	2.61	.
May	1.03	1.14	1.55	2.88	2.87	1.26	.	2.48	4.40	2.29	.
June.....	1.58	2.40	2.61	1.80	1.14	2.70	.	1.81	2.57	4.42	.
July75	2.91	6.49	1.38	1.64	4.62	.	4.78	.66	3.96	.
August.....	2.06	.82	3.55	1.95	2.74	3.06	3.12	8.27	6.73	3.63	.
September.....	.88	5.98	3.15	2.02	2.48	3.79	2.91	1.74	1.55	.62	.
October.....	4.60	2.54	5.85	1.94	2.08	6.27	1.83	3.26	1.98	.81	.
November.....	2.33	2.25	5.43	1.80	4.24	6.96	5.03	2.51	5.75	2.42	.
December.....	⁺ 5.98	1.90	6.02	.51	(4.71)	2.03	10.97	2.48	1.94	.84	.
TOTALS	25.38	26.96	48.03	21.69	(28.23)	36.68	.	45.59	33.94	27.13	.

1874 Dec? gauge bottle broken by frost amount computed by differentiation

1875 "On the morning of the 13th Nov? the gauge was quite full but no appearance of it having overflowed"

RAINFALL AT Corbridge on Tyne Lauder Grange

Lat.

Lon.

County of

Northumberland

Rain Gauge, by

Observer

J. Hurst Jun^r

Diameter					5				.5		
Height					7				.8	.7	
Altitude					275				270	275	
Year	1870	1871	1872	1873	1874	1875	1876	1877	1878	1879	MEANS.
January						1.80	.54	3.85	3.32	.83	
February. ..						1.35	1.89	1.61	.84	2.08	
March55	2.01	3.58	.80	1.39	
April68	2.41	3.92	2.42	2.30	
May						1.12	1.72	2.61	3.08	1.77	
June						1.70	4.53	1.48	2.79	4.09	
July						4.50	1.59	3.06	.72	3.17	
August						3.48	2.43	7.88	6.31	3.68	
September ..						2.77	3.30	1.27	1.48	.82	
October						4.33	1.46	2.72	1.36	.76	
November ..						5.13	2.96	1.66	3.18	1.71	
December ..						2.23	7.02	1.38	2.26	1.18	
TOTALS ..					16.26	29.64	31.86	35.02	28.56	23.78	

1879 A wall 6 ft high 24 ft S.

Corbridge ch. 1 mile N.

RAINFALL AT Newcastle on Tyne Phil. Society

Lat.....

Lon.....

County of.....

Northumberland

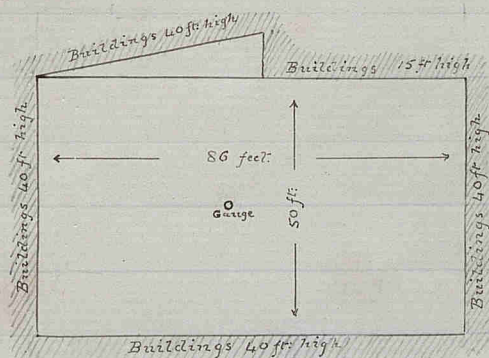
Rain Gauge, by.....

Observer

Wm. Syall Esq.

Diameter8
Height	1.5	1.7	.	1.5	.	1.7	.
Altitude	105.	.	106 ^π	.	105	.	.	106	103	.	.
YEAR	1870	1871	1872	1873	1874	1875	1876	1877	1878	1879	MEANS.
January.....	1.43	.30	2.45	1.00	1.49	1.00	.91	1.96	3.46	.85	1.485
February.....	2.35	.37	1.86	2.00	1.16	.86	2.84	2.28	1.11	2.96	1.779
March.....	1.49	.77	3.32	2.08	1.27	.48	3.01	3.76	1.30	.82	1.830
April.....	.83	2.04	2.30	.60	.56	.72	3.05	6.08	2.17	1.91	2.026
May	1.08	.60	1.98	2.19	3.21	1.30	1.35	2.78	3.62	1.82	1.993
June.....	1.79	1.87	3.12	4.38	.25	1.90	1.27	1.44	2.15	3.64	1.962
July67	2.00	3.16	2.69	2.40	6.20	2.22	3.21	.13	3.54	2.622
August.....	1.88	.87	2.10	2.31	1.16	4.12	1.66	7.64	6.16	3.06	3.096
September.....	1.40	4.68	4.82	.93	1.70	3.36	3.98	.98	1.44	.87	2.416
October.....	4.40	2.91	5.63	1.29	.76	4.36	1.26	2.74	1.32	.66	2.493
November.....	2.64	1.67	5.12	1.18	2.66	5.87	2.99	1.40	7.31	2.84	3.368
December.....	4.02	2.83	5.47	.56	5.80	2.02	7.73	2.41	4.69	1.26	3.679
TOTALS	23.58	20.91	41.33	19.02	22.42	32.19	32.27	36.68	34.86	24.23	28.749

1875 Gauge sheltered by buildings



St John's church 200 yds N.N.W.

RAINFALL AT Newcastle Crawhall Terrace

Lat. _____ Lon. _____ County of Northumberland

Rain Gauge, by _____ Observer _____

Diameter						2					
Height						6.0					
Altitude						82					
Year	1870	1871	1872	1873	1874	1875	1876	1877	1878	1879	MEANS.
January						2.30	.68				
February						1.20	2.15				
March53	2.53				
April80	2.89				
May						1.01	1.12				
June						1.95	1.24				
July						6.60	2.79				
August						3.37	1.50				
September ..						1.99	3.70				
October						2.52	2.09				
November ..						6.01	3.40				
December ..						1.95	8.28	#			
TOTALS ..						30.23	32.37				

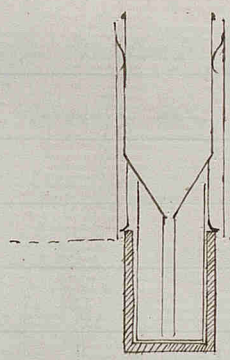
1877 Gauge moved to Gladstone Terrace

RAINFALL AT Newcastle on Tyne Bays Hill

Lat. 54° 58' N Lon. 1° 38' W County of Northumberland

Rain Gauge, by Observer Robt. Foster

Diameter					8							
Height	1	6					1.2	1.6	1.2			
Altitude	200					220		200	220			
YEAR	1870	1871	1872	1873	1874	1875	1876	1877	1878	1879	MEANS.	
January	1.53	1.28	2.47	1.07	1.38	2.10	.64	3.18	3.17	1.58	1.840	
February	1.90	1.50	1.90	2.07	.77	1.56	2.06	2.14	1.09	2.59	1.758	
March	1.14	.68	3.36	1.80	.74	.58	2.40	3.13	1.01	.89	1.573	
April	.64	3.12	2.24	.75	.86	.91	2.63	4.49	1.83	2.34	1.981	
May	1.09	1.46	1.59	2.60	3.10	.96	1.48	2.89	2.60	2.13	1.990	
June	1.59	2.98	2.87	1.67	.52	1.87	1.31	1.28	1.95	3.43	1.947	
July	- 47	2.58	2.84	2.34	1.94	5.38	1.90	2.97	.35	4.05	2.482	
August	1.70	.79	3.72	2.77	1.42	3.54	1.08	8.68	5.88	2.96	3.254	
September	1.05	4.74	4.30	1.70	2.26	1.49	3.28	.55	1.57	.62	2.156	
October	3.94	2.57	6.94	1.76	1.03	4.34	1.40	2.31	1.15	.65	2.609	
November	2.36	1.97	4.44	1.51	3.67	4.68	3.35	1.51	7.30	2.64	3.343	
December	4.99	1.78	4.89	.39	3.71	1.81	7.06	1.97	4.04	.52	3.116	
TOTALS	22.40	25.45	41.56	20.43	21.40	29.22	28.59	35.10	31.94	24.40	28.049	



1878 Hedge & low trees considerably further off than their height

1870 Daily Jan - Mar

RAINFALL AT Newcastle on Tyne Gladstone Terrace

Lat.

Lon.

County of Northumberland.

Rain Gauge, by

Observer W. Smurthwaite

Diameter								2	.	.	
Height6	.	.	
Altitude								150	.	.	
Year	1870	1871	1872	1873	1874	1875	1876	1877	1878	1879	MEANS.
January								# 3.22	3.02	1.13	
February ...								1.48	1.03	2.18	
March								3.52	1.25	.72	
April								4.84	2.00	2.08	
May								2.76	2.49	1.97	
June								1.63	1.91	3.28	
July								3.66	.28	4.38	
August								9.14	7.00	2.90	
September ..								.77	1.91	.68	
October								2.42	1.80	.63	
November ..								1.11	5.57	2.59	
December ..								2.05	2.67	1.39	
TOTALS ..								36.60	30.93	23.93	

1877 Gauge moved from Brawhall Terrace

House wall on W 24ft high + 12 ft distant

RAINFALL AT *Newcastle West Parade*

Lat.

Lon.

County of *Northumberland*

Rain Gauge, by

Observer *Wm. J. Wheeler*

Diameter5										
Height10										
Altitude											
YEAR	1870	1871	1872	1873	1874	1875	1876	1877	1878	1879	MEANS.
January.....	1.28										
February.....	2.00										
March.....	1.51										
April.....	1.13										
May	1.20										
June.....	2.00										
July49										
August.....	2.42										
September.....	.97										
October.....	4.15										
November.....	2.46										
December.....	4.34										
TOTALS	23.95										

C

RAINFALL AT Newcastle Town Moor (Deaf & Dumb Institution)

Lat.....

Lon.....

County of Northumberland

Rain Gauge, by.....

Observer

Mr. Wm. Miles

Diameter5
Height6
Altitude	201	.	200 ^m
YEAR	1870	1871	1872	1873	1874	1875	1876	1877	1878	1879	MEANS.
January.....	1.55	1.35	2.88	.98	1.45	2.91	.87	3.53	3.38	1.73	2.063
February.....	2.33	1.70	2.05	1.79	1.16	1.52	2.23	2.06	1.23	2.95	1.902
March.....	1.42	.83	3.42	1.96	.97	.69	2.92	3.17	1.14	1.26	1.778
April.....	1.13	3.31	2.46	.96	.74	1.06	2.82	4.58	1.92	2.26	2.124
May	1.17	1.53	1.65	2.49	2.85	1.04	1.34	3.03	2.62	2.05	1.977
June.....	2.26	2.82	2.98	1.71	.63	2.20	1.25	1.47	2.02	4.87	2.221
July	- 45	2.77	2.91	1.72	2.67	5.97	1.91	3.53	.27	4.99	2.719
August.....	2.32	.97	3.97	3.01	1.93	3.19	1.86	8.86	6.58	3.05	3.574
September.....	.99	4.57	4.29	2.16	1.96	2.48	4.21	1.19	1.68	.75	2.428
October.....	3.92	2.55	5.43	1.89	1.28	4.44	1.68	2.60	1.25	.63	2.567
November.....	2.88	1.91	4.58	1.29	3.64	5.48	3.20	1.61	6.99	3.01	3.459
December.....	4.68	1.85	4.87	.39	5.54	1.95	7.18	2.08	4.46	.74	3.374
TOTALS	25.10	26.16	41.49	20.35	24.82	32.93	31.47	37.71	33.54	28.29	30.186

1871 In open part of Garden

1878 A Hedge^s & wallⁿ 6 ft high both 50 ft from gaugeJeosmond church $\frac{1}{2}$ mile S.E.

RAINFALL AT *N. Shields Hallstead*

Lat.....

Lon.....

County of *Northumberland*

Rain Gauge, by.....

Observer

J. W. Lees Esq.

Diameter	10	.									
Height	6	.									
Altitude	100	.			100 ^π						
YEAR	1870	1871	1872	1873	1874	1875	1876	1877	1878	1879	MEANS.
January.....	1.50	1.10	2.82	.69	1.39	2.51	.57	3.00	3.12	1.72	1.850
February.....	1.81	1.80	2.01	2.05	1.01	1.45	2.03	1.38	1.05	2.80	1.747
March.....	1.23	.67	2.64	1.82	.71	.44	2.67	3.06	1.07	.88	1.519
April.....	.87	3.73	2.41	1.00	1.13	.85	1.98	4.24	1.84	2.32	2.037
May	1.47	1.36	1.51	2.73	2.21	.88	2.41	2.19	2.51	1.90	1.917
June.....	2.00	2.63	2.47	1.44	.69	.84	1.60	1.55	1.91	3.38	1.851
July79	3.34	2.62	2.52	2.81	6.86	2.31	3.52	.25	4.00	2.902
August.....	2.10	.89	3.00	2.23	1.49	3.54	1.66	7.00	6.55	2.95	3.141
September.....	.49	4.28	4.95	1.82	1.87	2.23	2.94	1.29	1.60	.93	2.240
October.....	3.63	2.37	5.46	2.56	1.46	4.46	1.74	2.46	1.20	.59	2.593
November.....	2.78	1.78	4.43	1.15	3.57	5.33	3.69	1.47	6.50	2.54	3.324
December.....	5.23 ⁺	1.76	4.91	.38	4.98	1.61	6.60	1.84	4.46	1.16	3.293
TOTALS	23.90	25.87	39.23	20.39	23.32	31.00	30.20	33.00	32.06	25.17	28.414

1871 *g* on lawn a large Chestnut tree about 60 ft. distant
 1878 Gauge is surrounded by trees but none nearer than
 50 ft

St Peters Church $\frac{3}{4}$ mile E. by S.

RAINFALL AT

Shields N. Post office

70

Lat.

Lon.

County of *Northumberland*

Rain Gauge, by

Observer *The Met. Council*

Diameter....								.8			
Height								1.4			
Altitude								100			
Year	1870	1871	1872	1873	1874	1875	1876	1877	1878	1879	MEANS.
January								3.68	2.49	1.22	
February. . .								1.85	.76	2.94	
March								2.54	1.23	.63	
April								3.89	1.85	2.26	
May								1.96	2.07	1.76	
June								1.09	1.69	3.41	
July								2.73	.55	3.95	
August								5.74	4.44	3.23	
September . .								1.60	1.62	.65	
October								2.42	1.48	.82	
November . .								1.23	5.47	3.46	
December . .								1.72	3.12	.95	
TOTALS . . .								30.45	26.77	25.28	

RAINFALL AT N. Shields Rosella Place

Lat..... Lon..... County of... Northumberland
 Rain Gauge, by..... Observer Robert Spruce Esq.

Diameter.....	8											
Height.....	1								1.6			
Altitude.....	124		126 ^π						124			
YEAR.....	1870	1871	1872	1873	1874	1875	1876	1877	1878	1879	MEANS.	
January.....	1.60	1.13	2.78	1.02	1.50	2.33	.70	3.08	2.99	1.29	1.842	
February.....	1.95	1.97	2.39	1.91	.95	1.21	2.42	1.58	.96	3.04	1.838	
March.....	1.21	.69	3.45	1.86	1.04	.51	2.02	1.70	1.17	.80	1.445	1.845
April.....	- .73	3.79	1.94	1.05	.72	.76	3.21	3.53	1.88	2.35	2.001	1.828
May.....	1.40	1.59	1.96	3.03	2.30	.72	.99	2.23	1.95	2.28	1.845	1.845
June.....	2.44	2.54	2.95	1.43	1.00	1.57	2.03	1.09	1.62	3.64	2.031	2.001
July.....	.55	3.79	2.39	2.27	1.47	5.38	2.74	2.45	.13	4.35	2.552	1.845
August.....	2.12	.96	3.71	3.47	1.55	3.41	1.28	6.32	4.71	3.42	3.095	2.031
September.....	.99	4.01	4.79	2.16	1.76	2.59	2.74	1.75	1.68	.73	2.320	2.552
October.....	3.47	1.97	5.96	2.24	1.65	3.26	1.78	2.61	1.50	.69	2.513	3.095
November.....	3.50	1.84	4.11	1.30	3.30	5.81	2.96	1.42	6.40	3.82	3.446	3.320
December.....	5.21	1.90	4.46	.29	3.79	1.44	6.14	2.15	4.82	.68	3.088	
TOTALS.....	25.22	26.18	40.89	22.03	21.03	28.99	29.01	29.91	29.81	27.09	28.016	

C C C

Tynemouth church 300 yds E.

RAINFALL AT *N. Shields Low Lights*

Lat.....

Lon.....

County of...

Northumberland

Rain Gauge, by.....

Observer

J. N. Prater Esq.

Diameter8
Height	3.1	.	3.4
Altitude	22
YEAR	1870	1871	1872	1873	1874	1875	1876	1877	1878	1879	MEANS.
January.....	1.47	1.00	2.71	.86	1.58	2.56	.74	3.20	2.80	1.15	1.807
February.....	1.69	1.84	2.02	1.67	.67	1.65	2.36	1.96	.99	3.09	1.794
March.....	1.01	.53	3.16	1.71	.97	.59	1.96	2.77	1.10	.67	1.447
April.....	.72	3.49	1.75	1.08	.63	.70	3.18	4.13	1.94	2.21	1.983
May	1.20	1.44	1.59	2.78	2.37	1.06	1.02	1.90	2.45	1.73	1.754
June.....	2.51	2.71	2.67	1.27	.86	1.88	1.97	1.15	1.94	3.77	2.073
July50	3.17	2.27	2.32	1.73	5.14	2.89	2.89	.66	4.07	2.564
August.....	1.97	.94	3.27	2.78	1.62	3.12	1.37	6.21	4.33	3.41	2.902
September.....	.70	3.92	4.83	1.69	1.77	3.20	2.82	1.23	1.59	.82	2.257
October.....	3.42	1.80	4.95	2.26	1.67	3.36	1.76	2.54	1.82	.60	2.418
November.....	3.55	1.68	3.78	1.17	3.13	5.62	3.07	1.46	6.72	3.88	3.406
December.....	4.91	1.59	4.35	.26	4.16	1.31	6.32	2.20	4.59	.90	3.059
TOTALS	23.65	24.11	37.35	19.85	21.16	30.19	29.46	31.64	30.93	26.30	27.464

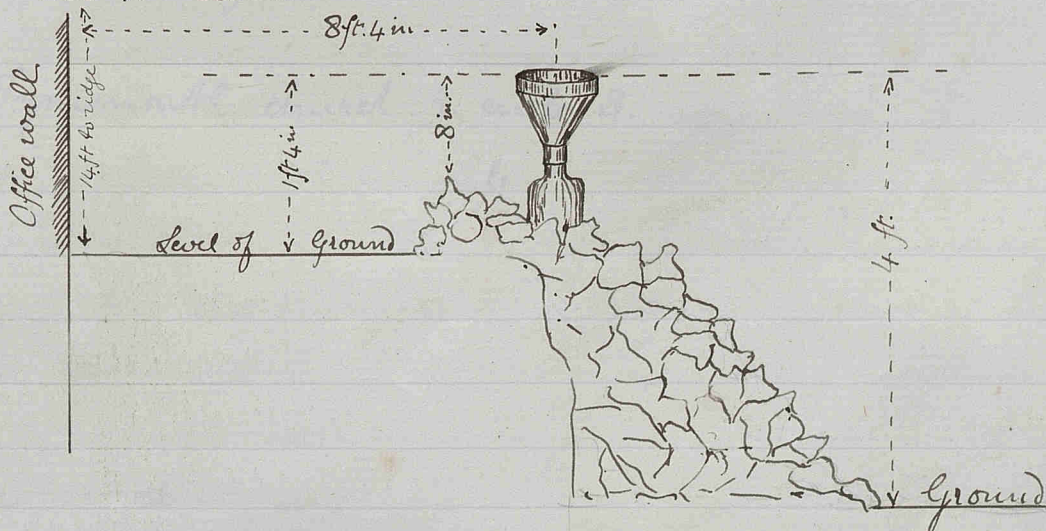
1871 Surrounded by rapidly rising ground on 3 sides, with trees at no great distance on the other.

RAINFALL AT N. Shields Tyne-mouth

Lat..... Lon..... County of Northumberland
 Rain Gauge, by..... Observer P. J. Mappin Esq.

Diameter5										
Height	1.2				2.8						
Altitude	62.		65.								
YEAR	1870	1871	1872	1873	1874	1875	1876	1877	1878	1879	MEANS.
January.....	1.29	.66	2.37	.74	1.28	2.20	.57	2.93	2.82	.85	1.571
February.....	1.89	1.85	1.97	1.45	.71	.99	2.20	1.73	.82	2.75	1.636
March.....	1.08	.54	2.78	1.80	.89	.44	1.66	2.47	1.10	.64	1.340
April.....	.75	3.32	1.68	1.00	.58	.61	2.83	3.82	1.73	2.20	1.852
May	1.14	1.19	1.79	2.79	2.16	.90	.92	2.06	2.22	1.95	1.712
June.....	2.59	2.92	2.43	1.29	.88	1.75	1.79	1.25	1.82	3.76	2.043
July43	3.49	2.64	2.40	1.68	5.04	2.33	2.82	.59	3.77	2.519
August.....	1.82	.44	3.36	2.82	1.63	3.15	1.13	5.97	4.08	3.19	2.809
September.....	.75	4.74	4.36	1.70	1.50	2.54	2.73	1.79	1.61	.72	2.244
October.....	3.28	1.83	5.45	2.11	1.32	2.78	1.61	2.33	1.49	.58	2.278
November.....	3.30	1.68	3.66	.99	3.23	5.09	2.61	1.26	6.69	3.38	3.189
December.....	5.01	1.66	4.06	.21	3.74	1.23	6.07	1.98	4.04	1.01	2.901
TOTALS	23.33	24.82	36.55	19.30	19.55	26.72	26.45	38.41	29.01	24.80	26.094

1875 Gauge partially sheltered by buildings on the N side



Holy Saviour church Tyne-mouth 847 yd N.W. 1/2 N.

RAINFALL AT *N. Shields Clemethorpe*

Lat..... Lon..... County of *Northumberland*
 Rain Gauge, by..... Observer *J. H. Proctor Esq.*

Diameter	5	.										
Height	/	.										
Altitude	150	.			155	150	.		.	.		
YEAR	1870	1871	1872	1873	1874	1875	1876	1877	1878	1879	MEANS.	
January.....	1.30	.93	2.52	.80	1.54	2.29	.68	3.02	2.88	1.13	1.709	
February.....	1.52	1.59	2.13	1.58	.93	1.05	2.41	1.95	.95	3.10	1.721	
March.....	96	.44	3.05	1.61	.83	.49	1.99	2.58	.98	.71	1.364	
April.....	77	3.51	1.83	.91	.69	.64	3.15	4.30	1.78	2.38	1.996	
May	1.21	1.50	1.57	2.80	2.28	1.02	.96	2.30	2.47	2.10	1.815	
June.....	2.38	2.38	2.54	1.24	1.24	1.79	1.91	1.21	2.04	3.60	2.033	
July	41	3.34	2.21	2.15	1.70	5.29	2.69	2.99	.52	4.17	2.547	
August.....	1.79	.95	3.58	2.78	1.54	3.27	1.30	6.21	4.66	3.34	2.942	
September.....	75	3.99	4.07	1.82	1.67	2.55	2.84	1.67	1.50	.78	2.164	
October.....	3.16	1.77	5.30	2.15	1.49	3.51	1.76	2.45	1.63	.61	2.383	
November.....	3.19	1.43	3.70	1.14	3.31	5.37	3.06	1.44	6.11	3.21	3.196	
December.....	4.60	1.57	3.93	.22	3.75	1.33	6.16	2.02	4.95	.80	2.933	
TOTALS	22.04	23.40	36.37	19.20	20.97	28.60	28.91	32.14	30.47	25.93	26.803	

*by an open lawn about 15 yards from a house
 two stories high*

Tynemouth church 1/2 mile S.

RAINFALL AT North Shields Billy Mill Res.

Lat.

Lon.

County of Northumberland

Rain Gauge, by

Observer J. Milnes Favell

Diameter5	
Height						6	.	.	.70	.6	
Altitude						197	
Year	1870	1871	1872	1873	1874	1875	1876	1877	1878	1879	MEANS.
January						2.34	.40	2.30	1.95	.70	
February73	2.35	1.38	.85	2.40	
March57	1.29	2.13	.82	.70	
April59	3.25	3.98	1.90	2.20	
May						1.08	.80	2.59	2.45	2.24	
June						1.11	1.96	.87	2.15	3.76	
July						5.74	2.37	2.80	.20	4.30	
August						3.12	.85	6.80	5.80	3.59	
September ..						2.98	2.62	1.45	1.65	.78	
October						2.60	1.85	2.25	.60	.50	
November ...						4.75	3.10	1.05	4.46	2.48	
December ..						.90	4.51	2.05	3.20	.24	
TOTALS ..						26.51	25.35	29.65	26.03	23.89	

Tynemouth church 1 mile N.W.

RAINFALL AT *N. Shields Whitley Convalescent Home*

Lat.....

Lon.....

County of.....

Northumberland

.....Rain Gauge, by.....

Observer

Chas. Roope Esq

Diameter5									
Height	9	.10			1			.6			
Altitude	18	30.0		50?	38						
YEAR	1870	1871	1872	1873	1874	1875	1876	1877	1878	1879	MEANS.
January.....		1.04	2.93	.81	1.39	2.00	.53	3.07	2.09	1.01	
February		1.82	2.31	1.51	1.03	.65	2.48	1.98	.99	3.72	
March28	3.33	2.13	.71	.63	1.95	2.65	.60	.65	
April		3.52	1.73	.86	.44	.74	3.41	4.15	1.49	2.00	
May	1.02	1.08	1.78	2.55	2.21	.37	.84	2.23	2.29	1.99	1.636
June.....	2.05	2.23	1.92	1.34	1.26	2.07	1.60	1.46	1.75	3.64	1.932
July18	3.06	3.10	2.24	1.42	5.74	2.47	2.86	.60	4.30	2.597
August.....	1.57	1.23	2.25	3.24	2.02	3.59	1.34	7.31	4.01	3.26	2.982
September.....	.61	3.17	4.65	1.58	1.84	2.88	2.88	1.67	2.05	.91	2.224
October.....	3.88	1.82	4.85	2.91	1.69	3.06	1.97	2.87	1.42	.54	2.501
November.....	2.51	1.35	3.10	1.11	3.56	4.97	2.67	1.51	5.42	3.51	2.971
December.....	3.30	1.85	3.77	.59	3.69	1.39	5.96	2.14	2.32	.86	2.587
TOTALS		22.45	35.72	20.87	21.26	28.09	28.10	33.90	25.03	26.39	

S. Pauls church 1 mile S.

RAINFALL AT *N. Shields Whitley Vicarage*

70

Lat.....

Lon.....

County of

Northumberland

Rain Gauge, by.....

Observer

Rev. R. J. Whitley

Diameter	5				5						
Height	2	1			3		2	3			
Altitude	83		82								
YEAR	1870	1871	1872	1873	1874	1875	1876	1877	1878	1879	MEANS.
January.....	1.47	1.04	2.78	1.04	1.30	2.34	.51	2.50			
February.....	2.07	1.96	2.52	1.44	.83	.73	1.21	1.94			
March.....	1.16	.29	3.24	2.07	.36	.57	.84	2.58			
April.....	.74	3.53	1.83	1.01	.45	.59	2.57	3.91			
May.....	1.18	1.14	1.90	2.76	1.36	1.08	2.00	1.90			
June.....	2.66	2.63	2.36	1.21	1.48	1.11	1.72	1.31			
July.....	.32	3.32	2.14	2.45	1.41	4.65	2.21	2.46			
August.....	1.94	1.23	3.51	2.67	2.00	3.43	1.03	7.09			
September.....	.81	3.17	5.27	1.86	1.96	2.92	2.51	1.59			
October.....	3.21	2.12	5.51	2.19	1.55	2.83	1.77	2.69			
November.....	1.28	1.71	4.40	1.00	2.45	5.99	2.76	1.64			
December.....	4.95	1.70	4.51	.17	3.14	1.91	5.96	2.13			
TOTALS	21.79	23.84	39.97	19.87	18.29	28.15	25.09	31.74	—		

C C C

1878 observations not properly kept

RAINFALL AT *N. Shields Whitley Vicarage Roof*

Lat.....

Lon.....

County of...*Northumberland*

Rain Gauge, by..... Observer *R. N. J. Whitley*

Diameter	<i>.5</i>										
Height	<i>42</i>										
Altitude	<i>124</i>										
YEAR	1870	1871	1872	1873	1874	1875	1876	1877	1878	1879	MEANS.
January.....	<i>85</i>										
February	<i>44</i>										
March	<i>1.30</i>										
April.....	<i>.65</i>										
May	<i>1.00</i>										
June.....	<i>2.15</i>										
July	<i>15</i>										
August.....	<i>1.40</i>										
September.....	<i>.40</i>										
October.....	<i>1.99</i>										
November.....	<i>2.22</i>										
December.....	<i>x .39</i>										
TOTALS											

*1870 * Dec^r Receiver broken by frost*

RAINFALL AT *N. Shields Earsdon*

Lat.....

Lon.....

County of.....

Northumberland

Rain Gauge, by.....

Observer

John Taylor Esq.

Diameter	5										
Height	2.6	2.10									
Altitude	105										
YEAR	1870	1871	1872	1873	1874	1875	1876	1877	1878	1879	MEANS.
January.....	1.45	1.06	2.75	.92	1.55	2.53	.45	2.84	3.55		
February.....	1.67	1.77	2.66	1.51	1.15	.79	1.89	1.72	.94		
March.....	.86	.48	2.78	2.24	.95	.76	1.85	2.56	.91		
April.....	.60	2.43	1.36	1.00	.80	.75	3.35	4.47	1.80		
May.....	1.31	1.49	1.96	2.62	2.17	1.08	.93	2.80	2.37		
June.....	2.25	2.41	2.63	1.32	.62	1.71	1.22	2.34	1.59		
July.....	.31	3.36	2.36	2.44	1.69	4.79	2.47	3.52	.48		
August.....	1.74	1.16	3.83	3.20	1.86	4.24	1.32	8.05	5.29		
September.....	.61	3.86	4.73	2.07	1.21	2.57	2.77	1.24	2.02		
October.....	3.18	1.64	5.37	2.62	1.53	3.61	1.96	2.95	1.32		
November.....	3.01	1.55	3.61	1.30	3.67	4.42	3.23	1.55	4.42		
December.....	4.05	2.13	3.82	.29	3.07	1.21	6.27	1.96	4.04		
TOTALS	21.04	23.34	37.86	21.53	26.27	28.46	27.71	36.00	28.73		

1879 observer dead.

RAINFALL AT *Heron's Haugh*

Lat.

Lon.

County of

Northumberland

Rain Gauge, by

Observer

Rev. Hugh Taylor

on list

70

Diameter			<i>.5</i>								
Height			<i>1.3</i>		<i>1.</i>						
Altitude				<i>230</i>		<i>286</i>					
Year	1870	1871	1872	1873	1874	1875	1876	1877	1878	1879	MEANS.
January				<i>2.45</i>	<i>2.26</i>	<i>3.85</i>	<i>1.25</i>				
February. . .				<i>.64</i>	<i>1.55</i>	<i>1.80</i>	<i>2.46</i>				
March				<i>1.92</i>	<i>1.93</i>	<i>.68</i>	<i>4.32</i>				
April				<i>.76</i>	<i>1.31</i>	<i>.67</i>	<i>2.72</i>				
May				<i>2.06</i>	<i>1.97</i>	<i>.83</i>	<i>1.01</i>				
June				<i>1.94</i>	<i>.87</i>	<i>2.10</i>	<i>3.92</i>				
July				<i>1.98</i>	<i>2.12</i>	<i>4.17</i>	<i>1.34</i>				
August			<i>2.65</i>	<i>3.55</i>	<i>3.80</i>	<i>2.24</i>	<i>2.18</i>				
September ..			<i>4.07</i>	<i>2.39</i>	<i>2.74</i>	<i>2.84</i>	<i>3.02</i>				
October			<i>5.08</i>	<i>2.86</i>	<i>2.45</i>	<i>3.95</i>	<i>1.67</i>				
November ..			<i>3.94</i>	<i>1.81</i>	<i>3.45</i>	<i>5.34</i>	<i>3.30</i>				
December ..			<i>3.25</i>	<i>1.00</i>	<i>4.08</i>	<i>1.78</i>	<i>7.96</i>				
TOTALS ..				<i>23.36</i>	<i>28.53</i>	<i>30.25</i>	<i>35.15</i>				

1872 August only part of month

1875 Gauge moved from the N. to the S.W. of House

1877 Monthly Glaishers gauge 4ft from this

RAINFALL AT *Humshaugh*

70

Lat.

Lon.

County of *Northumberland*

Rain Gauge, by

Observer *Rev Hugh Taylor*

Monthly Gauge

Diameter....								8			
Height								1	1.6		
Altitude								286			
Year	1870	1871	1872	1873	1874	1875	1876	1877	1878	1879	MEANS.
January							1.23	4.13	3.98	.87	
February. . .							2.42	2.30	1.12	2.16	
March							4.05	3.41	1.07	1.94	
April							2.54	4.07	2.57	2.19	
May89	1.90	2.99	1.98	
June							3.70	1.44	1.97	3.88	
July							1.17	3.20	1.16	3.86	
August							2.12	8.16	4.56	3.56	
September ..							2.87	1.31	2.06	.82	
October							1.56	3.82	1.71	.93	
November ..							3.30	2.83	4.16	1.98	
December ..							7.91	2.04	2.62	1.36	
TOTALS ..							33.76	38.63	29.97	25.53	

1877 Bushes about 4ft high 20ft off.

1879 Humshaugh church 250 yds S.W.

RAINFALL AT *Stamfordham*

Lat..... Lon..... County of *Northern Ireland*
..... Rain Gauge, by..... Observer *Rev. J. A. Biggs*

Diameter8									.5	
Height	1									1	
Altitude	400				445 ⁴⁰⁰						
YEAR	1870	1871	1872	1873	1874	1875	1876	1877	1878	1879	MEANS.
January.....	.81	1.25	2.89	1.90	1.80	3.30	.80	3.66	3.62	1.46	2.149
February.....	.77	2.20	2.45	1.35	1.51	1.71	2.44	2.18	1.08	1.34	1.703
March.....	5.34	.76	3.43	2.14	.64	.46	2.47	3.38	.80	1.33	2.075
April.....	.80	3.61	2.79	.45	2.10	.71	3.78	3.51	2.20	2.60	2.255
May92	.74	1.44	2.71	2.85	.76	1.25	3.35	2.59	2.62	1.923
June.....	1.71	3.25	2.53	2.03	.92	1.88	2.40	1.59	2.32	3.58	2.221
July54	3.55	4.67	2.47	1.21	3.74	1.08	2.87	.36	4.22	2.471
August.....	2.34	1.32	3.69	3.45	3.07	2.19	1.84	8.76	4.90	4.83	3.639
September.....	1.00	5.27	4.42	1.80	2.88	3.49	4.54	1.27	1.60	.99	2.726
October.....	3.90	.83	5.47	1.89	1.50	5.21	1.70	3.36	1.36	.88	2.610
November.....	2.60	2.27	4.63	1.96	1.90	5.23	3.59	2.15	5.42	2.73	3.248
December.....	5.42	1.46	4.66	.49	4.94	1.61	7.50	2.19	2.07	.46	3.080
TOTALS	26.15	26.51	43.07	22.64	25.32	30.29	33.39	38.27	28.32	27.04	30.100

1871 March ? whether the snow had been properly measured in the previous months.

RAINFALL AT *Bingfield House*

Lat.....

Lon.....

County of *Northumberland*.....Rain Gauge, by..... Observer *J. Topping*.....

Diameter.....					5						
Height					17						
Altitude.....					445						
Year.....	1870	1871	1872	1873	1874	1875	1876	1877	1878	1879	MEANS.
January.....					2.12	2.97	1.05	3.89	2.83	.81	
February.....					1.48	1.86	1.88	2.07	1.46	2.77	
March.....					1.42	.66	3.01	5.11	1.04	1.76	
April.....					1.94	.77	3.05	3.85	1.86	1.69	
May					2.08	.55	1.53	2.79	2.95	2.22	
June.....					.64	1.22	2.40	1.27	5.14	2.62	
July					1.64	5.15	.85	4.03	2.06	3.78	
August.....					2.49	2.26	1.47	7.89	2.68	2.96	
September.....					1.42	3.01	4.70	1.66	1.68	1.62	
October.....					2.76	5.45	2.10	2.64	1.69	.95	
November.....					3.33	6.46	3.79	1.80	3.71	1.90	
December.....					4.79	2.05	9.55	3.36	4.23	1.11	
TOTALS.....					26.11	32.41	35.38	40.36	31.33	24.19	

RAINFALL AT *Stamfordham Church Tower*

Lat.....

Lon.....

County of...

Northumberland

Rain Gauge, by.....

Observer

Rev. J. J. Bigge

Diameter	<input type="checkbox"/> 10										
Height	42										
Altitude	452										
YEAR	1870	1871	1872	1873	1874	1875	1876	1877	1878	1879	MEANS.
January.....	.60										
February.....	.57										
March.....	3.94										
April.....	.52										
May81										
June.....	1.36										
July58										
August.....	2.17										
September.....	.83										
October.....	3.21										
November.....	1.74										
December.....	3.74										
TOTALS	20.07										

1871 March 3 whether the snow had been properly measured in the previous months.

RAINFALL AT Newcastle & G. N. W. Hallington Fawcett

Lat..... Lon..... County of Northernumberland
..... Rain Gauge, by..... Observer Rev. R. J. Whicker

Diameter		6										
Height		3.0										
Altitude		⁷ 563										
YEAR	1870	1871	1872	1873	1874	1875	1876	1877	1878	1879	MEANS.	
January.....	2.28	1.69	2.86	2.25	2.03	4.26	.95	3.04	3.85	.90	2.411	
February	1.62	1.90	2.84	.88	1.11	1.57	1.79	2.70	1.61	1.75	1.777	
March	1.74	1.07	2.77	2.00	1.30	.80	2.45	4.40	.44	2.95	1.992	
April	1.16	3.41	2.15	.66	2.07	.54	1.75	2.40	1.69	1.55	1.738	
May98	.48	1.73	1.71	.97	.35	2.41	4.15	3.97	2.60	1.935	
June	1.68	2.17	2.05	1.85	1.23	1.72	3.31	1.39	2.82	5.39	2.361	
July	1.09	3.03	4.61	3.15	2.37	4.93	1.10	3.34	.35	3.69	2.766	
August	2.22	3.29	2.91	2.58	2.47	1.92	1.14	6.11	3.54	3.26	2.944	
September.....	1.43	4.29	4.08	2.16	2.90	2.58	3.98	3.16	1.98	1.65	2.821	
October	4.33	2.75	6.58	2.48	2.24	3.46	2.94	2.05	3.23	1.40	3.146	
November	1.40	1.72	3.26	1.56	2.30	4.54	3.80	4.07	4.78	2.19	2.962	
December	3.33	2.79	4.93	1.49	4.95	4.10	8.65	1.44	3.67	1.19	3.654	
TOTALS	23.26	28.59	40.77	22.77	25.94	30.77	34.27	38.25	31.93	28.52	30.507	

RAINFALL AT Newcastle & G. N. W. Whittle (Dean Res)

Lat.....

Lon.....

County of.....

Northumberland

.....Rain Gauge, by.....

Observer

Rev. R. J. Wheler

Diameter											
Height											
Altitude											
YEAR	1870	1871	1872	1873	1874	1875	1876	1877	1878	1879	MEANS.
January.....	1.55	.90	2.72	1.68	1.37	2.78	.56	2.65	3.29	.69	1.819
February91	1.42	2.43	.82	.86	1.06	1.74	2.71	.77	2.55	1.527
March	1.32	.98	2.35	1.69	1.21	.96	3.32	3.37	.57	1.02	1.679
April74	3.18	3.14	.44	2.05	.72	1.49	4.02	2.54	2.05	2.037
May74	.40	1.20	2.90	2.15	.66	2.43	2.54	2.72	1.70	1.744
June.....	1.36	4.07	2.10	1.61	.81	1.26	2.50	1.35	2.43	4.72	2.221
July68	3.18	4.17	2.66	2.00	4.31	.98	3.14	.25	3.53	2.490
August.....	1.69	2.40	3.44	2.65	2.20	2.27	1.76	7.40	3.97	4.39	3.217
September.....	1.24	3.87	3.88	2.35	2.82	3.20	3.52	1.69	2.26	.85	2.568
October.....	3.62	2.78	5.40	2.58	1.75	4.01	1.68	2.48	1.41	.81	2.652
November.....	1.60	2.46	3.96	1.54	1.98	4.27	3.64	2.25	3.63	2.10	2.743
December.....	3.93	1.36	4.61	.99	4.53	2.90	6.74	2.50	2.07	.85	3.048
TOTALS	19.38	27.00	39.40	21.91	23.73	28.40	30.36	36.10	25.91	25.26	27.745

C C

RAINFALL AT *Newcastle E. N. W. Swinburn Woodford*

Lat.....

Lon.....

County of.....

Northumberland

..... Rain Gauge, by.....

Observer

Rev. N. J. Whaler

Diameter		6	10								
Height		7	6								
Altitude		500									
YEAR	1870	1871	1872	1873	1874	1875	1876	1877	1878	1879	MEANS.
January.....	2.36	2.04	2.97	2.76	2.14	5.43	1.06	4.50	4.05	.94	2.825
February	1.47	1.78	2.61	1.17	1.12	1.45	1.90	3.24	1.39	2.23	1.836
March	2.84	1.27	4.54	2.11	1.53	2.24	2.87	4.35	.68	3.00	2.543
April	1.23	3.41	2.08	.75	2.36	.64	1.63	2.38	1.87	1.49	1.784
May	1.13	.51	2.03	1.90	1.20	.49	2.13	3.79	4.36	2.61	2.015
June.....	1.80	2.18	2.42	1.97	1.28	1.81	3.94	1.65	2.40	5.47	2.492
July	1.11	2.72	4.98	3.14	2.11	5.10	1.34	3.47	.56	3.46	2.799
August.....	2.32	3.77	2.88	2.54	2.40	1.77	1.08	5.54	3.51	3.49	2.930
September.....	1.35	3.85	4.13	2.58	3.49	2.58	4.23	4.13	2.08	1.77	3.019
October.....	4.36	2.89	6.87	2.62	2.54	3.39	2.86	2.01	3.06	1.54	3.214
November.....	1.72	1.76	3.42	1.41	2.70	4.20	3.32	4.27	5.06	2.16	3.002
December.....	3.87	3.13	5.12	1.82	4.93	5.06	7.73	1.49	3.14	1.37	3.766
TOTALS	25.56	29.31	44.05	24.77	27.80	34.16	34.09	40.82	32.16	29.53	32.225

RAINFALL AT *Newcastle E. N. N. N. Tyne Green Craig*

Lat.....

Lon.....

County of..

Northumberland

.....Rain Gauge, by.....

Observer

Rev. N. J. Wheeler

Diameter		6									
Height		6									
Altitude		800									
YEAR	1870	1871	1872	1873	1874	1875	1876	1877	1878	1879	MEANS.
January.....	2.89	1.69	2.97	2.98	3.05	5.65	1.35	3.84	4.26	.98	2.966
February	1.34	2.01	2.66	1.44	1.22	1.01	2.05	3.55	1.60	2.22	1.910
March	2.27	1.63	3.38	2.33	1.86	2.05	3.27	4.23	.84	3.38	2.524
April	1.38	3.66	1.71	.73	2.64	.76	1.95	2.72	2.12	1.45	1.912
May	1.23	.90	3.00	1.59	1.27	.73	2.71	4.19	5.27	2.62	2.337
June.....	2.11	2.32	2.56	1.91	1.17	2.23	4.82	1.84	2.39	5.73	2.708
July	1.17	3.12	5.17	3.41	2.61	4.49	1.38	3.82	.42	4.05	2.964
August.....	2.13	4.05	3.74	2.82	3.01	2.03	1.16	6.28	3.76	3.49	3.247
September.....	1.30	3.68	3.98	2.87	4.14	2.70	3.94	3.11	2.62	1.91	3.025
October.....	4.73	2.85	7.48	2.97	3.29	3.59	2.91	3.04	3.87	1.98	3.671
November.....	1.65	1.37	3.68	1.97	2.92	4.21	3.61	5.28	5.07	2.29	3.205
December.....	3.38	4.21	5.49	2.11	4.19	3.86	7.40	1.50	3.45	2.32	3.791
TOTALS	25.58	31.49	45.82	27.13	31.37	33.31	36.55	43.40	35.67	32.42	34.274

C C

RAINFALL AT *Newcastle + G. M. M. Gunnemerton Burn*
Lat..... Lon..... County of *Northern Ireland*
Rain Gauge, by..... Observer *Rev. R. J. Wheeler*

Diameter		6	10								
Height			6								
Altitude		676									
YEAR	1870	1871	1872	1873	1874	1875	1876	1877	1878	1879	MEANS.
January.....	2.58	1.78	2.94	2.73	2.25	5.16	1.14	3.72	4.19	1.01	2.750
February	1.64	1.85	2.72	1.23	1.19	1.22	2.15	3.24	1.51	1.95	1.870
March	2.59	1.38	3.73	2.09	1.47	2.26	3.05	3.71	.64	2.92	2.384
April	1.16	3.65	1.87	.59	2.48	.66	1.97	2.51	2.09	1.26	1.824
May	1.14	.67	2.59	1.97	1.15	.62	1.98	3.95	4.93	2.26	2.126
June	2.09	2.33	2.58	2.32	1.18	1.80	4.25	1.81	2.16	5.51	2.603
July	1.16	2.61	5.18	2.79	2.53	5.25	1.18	3.21	.57	3.80	2.828
August.....	1.90	3.75	3.92	2.56	2.67	1.92	1.13	6.04	3.42	3.37	3.068
September.....	1.16	3.58	3.63	2.92	3.55	2.62	4.46	2.87	2.45	1.74	2.898
October.....	4.05	2.71	6.82	2.77	2.61	3.59	3.15	2.68	3.34	1.74	3.346
November.....	1.46	1.52	3.44	1.55	2.53	4.21	3.54	4.47	5.43	1.95	3.016
December.....	3.91	3.41	5.15	1.73	4.42	4.05	7.34	1.50	3.10	1.49	3.610
TOTALS	24.84	29.24	44.57	25.25	28.03	33.36	35.34	39.71	33.83	29.00	32.317

RAINFALL AT Newcastle & G. N. R. N. Tyne Valley

Lat.....

Lon.....

County of...

Northumberland.....Rain Gauge, by..... Observer Rev. R. J. Whaler

Diameter			10									
Height			6									
Altitude			300									
YEAR	1870	1871	1872	1873	1874	1875	1876	1877	1878	1879	MEANS.	
January.....	2.53	1.90	3.07	1.72	2.39	5.11	1.21	3.48	4.04	.65	2.610	
February	1.06	1.61	2.57	.66	1.04	1.61	1.91	3.74	1.55	2.29	1.804	
March	1.94	1.24	3.04	1.89	1.33	.56	3.60	3.77	.69	2.75	2.081	
April	1.07	3.31	1.80	.50	2.29	.71	2.29	2.20	2.11	1.25	1.753	
May	1.05	.75	2.40	1.36	.76	.48	1.79	3.51	4.93	2.08	1.911	
June.....	1.84	2.38	2.54	2.18	1.11	1.25	4.01	1.53	1.90	4.92	2.366	
July	1.25	3.10	5.43	2.42	2.39	4.78	1.04	3.25	.71	4.16	2.853	
August.....	2.11	4.00	3.58	2.68	2.36	1.76	1.19	5.74	3.43	3.12	2.997	
September.....	1.38	3.07	3.60	3.33	3.41	2.54	3.94	3.07	2.15	1.94	2.843	
October.....	4.36	2.67	6.57	2.86	2.75	2.97	2.67	1.95	3.07	1.59	3.140	
November.....	1.19	1.80	3.30	1.34	2.26	3.93	3.05	5.54	5.14	1.97	2.952	
December.....	3.11	2.89	4.23	1.92	4.29	3.83	6.90	1.41	2.70	1.15	3.243	
TOTALS	22.89	28.72	42.07	22.86	26.38	29.53	33.60	39.19	32.42	27.87	30.553	

3573? No?

70

RAINFALL AT *Newcastle & G. N. R. Hallington Village*

Lat.....

Lon.....

County of *Northumberland*.....Rain Gauge, by..... Observer *Rev. R. J. Wheeler*.....

Diameter			10									
Height			6									
Altitude		469.0										
YEAR	1870	1871	1872	1873	1874	1875	1876	1877	1878	1879	MEANS.	
January.....	2.47	2.17	3.23	2.45	2.31	5.09	1.10	4.05	4.13	1.14	2.814	
February	1.64	2.16	3.16	1.56	1.16	2.02	1.91	3.31	1.81	2.19	2.092	
March	2.13	1.32	4.34	2.50	1.87	1.64	3.13	5.06	.67	3.08	2.574	
April	1.24	3.35	2.84	.72	2.64	.70	2.13	2.78	1.92	1.87	2.019	
May	1.09	.65	1.82	2.11	1.03	.36	2.83	4.64	3.95	2.45	2.093	
June.....	2.02	2.23	2.09	1.86	1.30	1.81	3.47	1.53	3.19	5.66	2.516	
July	1.12	3.13	4.51	3.18	2.45	4.37	1.11	3.38	.29	3.62	2.416	
August.....	2.20	3.22	2.99	2.57	2.16	1.85	1.12	6.17	3.47	3.55	2.930	
September.....	1.49	4.61	4.36	2.25	3.18	2.69	3.90	3.20	2.34	1.68	2.970	
October.....	4.56	2.82	7.03	2.53	2.36	3.64	2.98	2.05	3.24	1.45	3.266	
November.....	2.04	1.85	3.79	1.61	2.53	4.89	4.10	4.27	5.22	2.94	3.324	
December.....	4.19	3.11	5.76	1.93	5.71	5.80	9.90	1.83	3.66	1.91	4.380	
TOTALS	26.19	30.62	45.92	25.27	28.70	34.86	37.68	42.27	33.89	31.54	33.694	

C C

RAINFALL AT *Bellingham Hesteryside*

Lat.....

Lon.....

County of.....

Northumberland

Rain Gauge, by.....

Observer

W. H. Charlton Esq.

Diameter	<i>.10</i>	<i>.5</i>									
Height	<i>3.10</i>	<i>.8</i>	<i>1.</i>	<i>.8</i>							
Altitude	<i>420^p</i>	<i>373.0</i>	<i>373^π</i>								
YEAR	1870	1871	1872	1873	1874	1875	1876	1877	1878	1879	MEANS.
January.....	<i>3.90</i>	<i>2.06</i>	<i>3.67</i>	<i>5.05</i>	<i>3.86</i>	<i>5.46</i>	<i>2.47</i>	<i>6.48</i>	<i>4.70</i>	<i>.78</i>	<i>3.843</i>
February.....	<i>1.00</i>	<i>3.02</i>	<i>3.00</i>	<i>2.05</i>	<i>1.53</i>	<i>1.05</i>	<i>3.68</i>	<i>2.98</i>	<i>1.48</i>	<i>2.43</i>	<i>2.222</i>
March.....	<i>— .65</i>	<i>.97</i>	<i>3.04</i>	<i>1.96</i>	<i>3.18</i>	<i>1.65</i>	<i>3.90</i>	<i>3.89</i>	<i>1.23</i>	<i>3.05</i>	<i>2.352</i>
April.....	<i>2.18</i>	<i>3.98</i>	<i>3.52</i>	<i>.81</i>	<i>2.07</i>	<i>1.08</i>	<i>3.13</i>	<i>4.16</i>	<i>2.33</i>	<i>1.86</i>	<i>2.572</i>
May	<i>3.23</i>	<i>1.42</i>	<i>2.72</i>	<i>1.83</i>	<i>2.09</i>	<i>1.18</i>	<i>1.26</i>	<i>2.20</i>	<i>5.30</i>	<i>2.03</i>	<i>2.326</i>
June.....	<i>3.96</i>	<i>2.00</i>	<i>3.09</i>	<i>1.53</i>	<i>.65</i>	<i>2.26</i>	<i>3.64</i>	<i>2.39</i>	<i>3.02</i>	<i>4.32</i>	<i>2.686</i>
July	<i>1.09</i>	<i>4.69</i>	<i>6.01</i>	<i>2.94</i>	<i>2.21</i>	<i>3.68</i>	<i>1.09</i>	<i>3.51</i>	<i>1.68</i>	<i>4.60</i>	<i>3.150</i>
August.....	<i>1.70</i>	<i>2.07</i>	<i>3.65</i>	<i>3.96</i>	<i>4.70</i>	<i>2.64</i>	<i>2.21</i>	<i>8.52</i>	<i>5.20</i>	<i>4.21</i>	<i>3.886</i>
September.....	<i>2.36</i>	<i>2.53</i>	<i>5.56</i>	<i>2.46</i>	<i>3.15</i>	<i>3.60</i>	<i>4.01</i>	<i>1.88</i>	<i>3.24</i>	<i>1.67</i>	<i>3.046</i>
October.....	<i>8.11</i>	<i>3.85</i>	<i>6.43</i>	<i>4.43</i>	<i>5.65</i>	<i>3.00</i>	<i>2.66</i>	<i>5.06</i>	<i>3.35</i>	<i>1.41</i>	<i>4.395</i>
November.....	<i>1.53</i>	<i>1.66</i>	<i>6.86</i>	<i>3.20</i>	<i>3.79</i>	<i>4.88</i>	<i>3.53</i>	<i>4.68</i>	<i>5.69</i>	<i>2.43</i>	<i>3.825</i>
December.....	<i>2.28</i>	<i>4.21</i>	<i>6.21</i>	<i>1.59</i>	<i>3.24</i>	<i>3.17</i>	<i>9.05</i>	<i>2.58</i>	<i>2.52</i>	<i>2.26</i>	<i>3.711</i>
TOTALS	<i>31.99</i>	<i>32.46</i>	<i>53.76</i>	<i>31.81</i>	<i>36.12</i>	<i>33.65</i>	<i>40.63</i>	<i>48.33</i>	<i>39.74</i>	<i>31.05</i>	<i>37.954</i>

1870 *Sec.* has the snow been measured.

1871 From nearest wall 25 yards, from nearest tree 20 yards

RAINFALL AT *Harthorn Hallington*

Lat.....

Lon.....

County of *Northumberland*Rain Gauge, by..... Observer *Herbert Laws Esq. C.E.*
Mr. M^c Combie

Diameter5										
Height	/										
Altitude	398										
YEAR	1870	1871	1872	1873	1874	1875	1876	1877	1878	1879	MEANS.
January.....	2.66	1.54	3.32	2.61	2.44		1.07	5.38	3.99	1.34	
February.....	2.83	3.03	3.53	1.55	2.06		3.77	2.21	1.40	3.80	
March.....	1.17	1.07	4.15	2.90	2.15		2.77	4.89	1.11	2.00	
April.....	1.13	4.78	3.95	1.09	1.52		4.42	4.88	2.61	2.84	
May.....	1.69	.96	1.88	2.36	2.16		1.37	3.28	3.31	2.56	
June.....	1.97	2.83	2.56	2.18	1.35		1.86	1.35	2.77	5.24	
July.....	.65	3.29	4.36	3.08	2.49		1.35	3.31	.45	4.17	
August.....	2.23	1.87	3.85	4.21	4.11		1.51	9.03	6.46	3.12	
September.....	1.56	5.15	5.79	2.17	2.24	from 15	2.06	3.82	2.17	2.12	1.17
October.....	4.88	3.19	5.99	3.16	3.10	5.52	2.22	4.80	2.07	.53	
November.....	2.57	2.22	5.35	2.33	3.97	4.80	3.87	2.30	5.81	2.55	
December.....	5.49	2.26	6.10	.86	5.35	7.12	9.92	2.30	3.80	.91	
TOTALS	28.83	32.19	50.83	28.50	32.94		37.95	45.90	35.90	30.23	

Mr. M^c Combie came to the place in Nov. 75 and could only find the observations from Sept. 15th

RAINFALL AT Morpeth Meldon Park

Lat.....

Lon.....

County of Northumberland

Rain Gauge, by.....

Observer

John Dingley

Diameter		5										
Height		10	1									
Altitude												
YEAR	1870	1871	1872	1873	1874	1875	1876	1877	1878	1879	MEANS.	
January.....		^Δ (1.40)	2.70	2.03	2.00	3.48	.95	4.96	3.39	1.31		
February.....		2.82	3.28	1.69	1.93	2.29	3.28	1.90	1.63	3.58		
March.....		.68	4.23	2.67	1.60	.95	2.74	5.31	.94	1.32		
April.....		4.01	3.07	.93	1.50	.81	4.55	5.15	2.23	2.85		
May.....		1.02	2.21	2.10	2.30	.70	1.12	3.94	2.94	2.54		
June.....		3.00	2.40	1.80	1.21	1.86	1.76	1.40	2.83	3.88		
July.....		2.90	4.00	2.44	3.71	2.70	2.13	3.54	.44	4.07		
August.....		1.72	3.92	3.82	3.15	2.36	1.36	8.59	4.86	4.55		
September.....		5.04	4.62	2.46	2.05	3.34	4.19	1.48	2.01	1.24		
October.....		2.86	5.65	2.38	2.12	4.88	1.77	4.00	1.80	.60		
November.....		2.04	4.79	2.01	4.21	5.96	4.26	2.33	6.44	2.77		
December.....		1.82	6.01	.60	5.57	1.90	10.62	2.23	3.67	.94		
TOTALS	(27.25)	(29.31)	46.88	24.93	31.35	31.23	38.73	44.83	33.18	29.65	(33.734)	

Jan Red 419
This station is 1½ miles from Hartburn and 6½ from Morpeth

1870 computed from Hartburn Wallington + Morpeth, Cresswell

RAINFALL AT *Falstone*

Lat..... Lon..... County of *Northumberland*
 Rain Gauge, by..... Observer *Rev. R. J. Wheler*
W. M. Hedley

Diameter		5									
Height		3.0	2.								
Altitude											
YEAR	1870	1871	1872	1873	1874	1875	1876	1877	1878	1879	MEANS.
January.....	##	1.27	4.87	7.56							
February		2.99	3.12	5.7							
March		2.06	3.21	3.39							
April		4.00	3.29	1.30							
May		1.21	2.95	2.54							
June.....		2.21	3.22	1.73							
July		4.74	4.35	3.03							
August		2.49	3.87	5.64							
September.....		2.03	3.99	3.42							
October.....		3.99	3.35	4.91							
November.....		1.66	4.33	3.80							
December.....		5.90	4.96	3.03	##						
TOTALS		34.55	45.51	40.92							

C C

RAINFALL AT Morpeth Sheepwash

70

Lat.

Lon.

County of Northumberland

Rain Gauge, by

Observer Hon^{ble} & Res^d W. C. Ellis

d

Diameter									1.5	.	
Height									1.0	.	
Altitude									24	.	
Year	1870	1871	1872	1873	1874	1875	1876	1877	1878	1879	MEANS.
January								3.30	3.22	1.38	
February								1.85	1.07	3.33	
March								3.04	.89	.50	
April								4.57	1.76	2.98	
May								3.05	2.41	2.42	
June								1.19	1.84	3.83	
July								2.82	.43	4.42	
August								6.97	3.90	3.95	
September ..								1.54	1.52	.61	
October								3.38	1.25	.46	
November ..								1.58	7.37	3.10	
December ..								1.87	4.65	.59	
TOTALS ..								35.16	30.31	27.57	

Sheepwash is three miles from the sea; $3\frac{1}{2}$ miles E of Morpeth on the same river (the Wanbeck), 9 miles E of Melton & nearly 14 miles E of Wallington on
 1878 House 30ft high, distant 18ft N.W. tree 25ft high, 27ft E
 1879 Gauge moved a few feet further from the above house & tree
 1880 Gauge moved to Bothalhaugh about 1 mile W to a very similar position: a low sheltered valley

RAINFALL AT *Morpeth Cresswell*

Lat..... Lon..... County of *Northumberland*
..... Rain Gauge, by..... Observer *R. B. Wharton Esq.*
Rev J. E. Leese

Diameter					8	8					
Height		1.0			1.3	1		.10			
Altitude		96.0			90			95			
YEAR	1870	1871	1872	1873	1874	1875	1876	1877	1878	1879	MEANS.
January.....	(1.98)	1.24	2.17	1.50	1.59	2.62	.80	2.91	2.72	1.23	1.876
February.....	2.10	2.10	2.39	1.04	.98	.90	2.59	1.78	.90	3.03	1.781
March99	.46	2.57	1.85	.71	.57	1.97	2.92	1.00	.47	1.351
April.....	.50	3.47	1.70	.86	.93	.76	3.08	3.73	1.47	2.54	1.904
May	1.48	1.30	1.33	1.76	2.41	.79	1.25	2.36	2.34	2.50	1.752
June.....	.74	2.14	1.30	1.01	.70	1.07	2.21	1.17	1.77	3.66	1.577
July77	2.64	3.02	2.31	1.51	2.52	.98	2.86	.43	3.68	2.072
August.....	1.65	1.46	2.31	2.52	2.11	2.11	.72	6.74	3.50	2.96	2.608
September.....	1.44	4.06	4.71	2.27	1.38	2.56	2.62	1.67	1.25	.46	2.242
October.....	2.92	2.11	4.86	2.24	1.34	2.37	1.84	2.94	1.62	.43	2.267
November.....	2.69	1.69	3.64	1.12	2.50	3.53	3.08	1.41	(4.79)	1.87	2.632
December.....	3.29	1.09	3.53	.44	3.39	1.61	5.90	1.87	(.94)	.72	2.278
TOTALS	(20.55)	23.76	33.53	18.92	19.55	21.41	27.04	32.36	22.73	23.55	24.340

1870 Jan'y gauge out of order amount estimated
1874 Amount for November may be underrated.
The gauge having been for a few hours blown down.
1877 Part of my house is only 21ft distant from gauge
and about 25 ft high
1878 not printed the amounts for ~~the~~ Nov^r & Dec^r being too small

RAINFALL AT *Morpeth Earsdon*

70

Lat. Lon. County of *Northumberland*
Rain Gauge, by Observer *T. J. Murday*

Diameter.						<i>6</i>					
Height.						<i>1. 3</i>					
Altitude.						<i>600</i>					
Year	1870	1871	1872	1873	1874	1875	1876	1877	1878	1879	MEANS.
January						<i>3.16</i>	<i>1.20</i>	<i>5.10</i>	<i>3.36</i>	<i>1.10</i>	
February.						<i>2.18</i>	<i>3.12</i>	<i>2.26</i>	<i>1.24</i>	<i>3.67</i>	
March						<i>1.08</i>	<i>2.86</i>	<i>5.12</i>	<i>.62</i>	<i>1.46</i>	
April						<i>.63</i>	<i>5.10</i>	<i>4.87</i>	<i>2.17</i>	<i>2.57</i>	
May						<i>.87</i>	<i>1.32</i>	<i>3.76</i>	<i>2.83</i>	<i>2.31</i>	
June						<i>1.97</i>	<i>1.50</i>	<i>1.20</i>	<i>2.71</i>	<i>4.01</i>	
July						<i>2.64</i>	<i>2.68</i>	<i>3.68</i>	<i>.51</i>	<i>3.98</i>	
August						<i>2.48</i>	<i>1.43</i>	<i>8.15</i>	<i>5.07</i>	<i>4.57</i>	
September....						<i>2.87</i>	<i>4.16</i>	<i>1.32</i>	<i>1.79</i>	<i>1.53</i>	
October						<i>5.13</i>	<i>1.53</i>	<i>3.92</i>	<i>1.88</i>	<i>.58</i>	
November						<i>5.68</i>	<i>4.63</i>	<i>2.86</i>	<i>6.32</i>	<i>2.97</i>	
December						<i>1.96</i>	<i>10.45</i>	<i>1.81</i>	<i>3.56</i>	<i>1.03</i>	
TOTALS						<i>30.65</i>	<i>39.98</i>	<i>44.05</i>	<i>32.06</i>	<i>29.78</i>	

RAINFALL AT Heilder

Lat.....

Lon.....

County of.....

Northumberland

Rain Gauge, by.....

Observer

W. W. Spence

Diameter5									
Height		1.6									
Altitude		600 [?]	673 ^π								
YEAR	1870	1871	1872	1873	1874	1875	1876	1877	1878	1879	MEANS.
January.....		2.24	6.60	11.21							
February		3.62	4.93	1.30							
March		2.98	4.07	2.30							
April		4.15	3.85	.78							
May		1.53	3.62	2.38							
June		2.46	4.44	2.40							
July		5.26	6.88	4.44							
August		3.16	4.60	4.50							
September.....		2.72	4.73	3.60							
October.....		4.35	7.39	5.57							
November.....		4.04	6.80	3.86							
December.....		7.16	6.76	3.40 [#]							
TOTALS		43.67	64.67	45.74							

RAINFALL AT Deanhead

70

Lat.

Lon.

County of Northumberland

Rain Gauge, by

Observer Rev R. F. Wheeler

No 1

Diameter . . .											
Height . . .											
Altitude . . .			800 ⁷								
Year . . .	1870	1871	1872	1873	1874	1875	1876	1877	1878	1879	MEANS.
January . . .			3.33								
February . . .			3.23								
March			5.41								
April			4.20								
May			3.45								
June			2.67								
July			4.31								
August			3.53								
September . .			2.97								
October			2.77								
November . .			7.39								
December . .			6.80 [#]								
TOTALS . . .			50.06								

C

RAINFALL AT Deanhead

Lat..... Lon..... County of Northumberland

.....Rain Gauge, by..... Observer Rev. R. F. Wheeler

No 2

Diameter			5								
Height			1								
Altitude			800 ^{ft}								
YEAR	1870	1871	1872	1873	1874	1875	1876	1877	1878	1879	MEANS.
January.....			2.90								
February.....			3.22								
March			5.38								
April.....			4.25								
May			3.47								
June.....			2.80								
July			4.33								
August.....			3.50								
September.....			3.04								
October.....			2.69								
November.....			7.42								
December.....			6.87								
TOTALS			49.87								

C

RAINFALL AT *Rothbury Breckburn Priory*

Lat.....

Lon.....

County of *Northumberland*Rain Gauge, by..... Observer *L. H. Hodgson Esq.*

Diameter5					5.8	.8	.	.	.	
Height	/						1.2	.	1.	.	
Altitude	300	250	300	250	300		
YEAR	1870	1871	1872	1873	1874	1875	1876	1877	1878	1879	MEANS.
January.....	2.20	1.32	3.00	2.28	2.12	3.38	.93	4.72	3.71	1.47	2.508
February.....	3.07	3.03	3.52	1.78	1.77	2.67	3.48	1.80	1.27	4.16	2.705
March.....	1.41	.91	4.02	2.98	1.61	1.21	3.14	5.11	.85	1.26	2.250
April.....	.88	4.45	3.27	1.27	1.79	.94	5.41	6.00	2.29	3.19	2.949
May	1.75	1.01	2.17	2.28	2.32	1.98	1.04	3.79	2.75	2.58	2.167
June.....	1.66	2.86	2.54	1.30	2.16	2.04	2.66	1.45	2.50	4.30	2.347
July62	3.25	3.43	2.46	1.69	2.00	1.27	3.29	.52	4.88	2.347
August.....	1.84	.29	3.63	3.96	3.71	1.88	1.45	7.98	4.00	4.34	3.308
September.....	1.26	4.69	5.61	1.87	2.51	3.19	4.45	1.96	2.30	1.06	2.890
October.....	4.81	4.58	6.19	2.66	1.95	5.37	1.93	4.32	2.43	.69	3.493
November.....	3.76	2.93	5.38	2.15	3.65	6.22	4.71	3.66	7.15	4.19	4.380
December.....	5.54	1.90	6.16	.74	4.49	2.25	11.07	1.93	4.43	1.28	3.979
TOTALS	29.36	31.22	48.92	25.73	29.77	33.08	41.54	46.01	34.20	33.40	35.523

1875 New gauge substituted in June the old one being worn out.

Garden wall 13ft high 20ft distant

RAINFALL AT Rothbury Cragside

Lat..... Lon..... County of..... *Northumberland*
Sir W G Ansell Bart
 Rain Gauge, by..... Observer *Rev. A. J. Wheeler*

Diameter8
Height	1
Altitude	400.
YEAR	1870	1871	1872	1873	1874	1875	1876	1877	1878	1879	MEANS.
January.....	2.37	1.95	2.96	2.28	1.91	3.08	.81	4.47	3.25	3.10	
February.....	3.20	4.07	3.53	1.78	1.45	3.15	3.86	3.23	1.70	1.55	
March.....	.35	.95	5.05	2.98	1.23	.96	2.60	5.60	1.17	1.42	
April.....	.98	4.25	5.62	1.27	1.25	1.13	6.21	4.96	2.19	3.19	
May.....	1.42	1.01	2.97	2.28	1.55	1.15	1.43	5.00	3.19	2.29	
June.....	1.31	2.79	1.83	1.30	2.50	1.64	.98	1.69	2.79	4.10	
July.....	1.46	1.14	3.64	2.46	3.30	1.51	.60	2.73	.32	6.42	
August.....	1.87	1.40	4.02	3.96	5.63	1.12	2.89	8.34	5.74	3.51	
September.....	.91	3.92	5.40	1.87	2.58	3.74	4.17	2.75	2.69	1.37	
October.....	4.35	3.00	6.53	2.66	2.35	5.88	1.89	4.09	2.70	1.02	
November.....	3.62	2.33	5.56	2.15	5.68	3.65	5.43	2.50	6.13	1.60	
December.....	5.40	2.58	7.92	.74	3.60	4.71	12.64	2.01	3.30	1.43	
TOTALS	27.24	29.39	53.03	25.73	33.03	31.72	43.51	47.37	35.17	31.00	(35.919)

C C C

1878 Wall 12ft high 45ft distant + a few low bushes
 1879 " 9ft " 40 " " N.W.

Rothbury church 1 mile S.W.

1873 = Brinkburn Priory

RAINFALL AT *Deadwater*

Lat.....

Lon.....

County of.....

Northumberland

Rain Gauge, by.....

Observer.....

Mr. Scott

Diameter3
Height	1	.6
Altitude	2000.	1000	2000	.	.
YEAR	1870	1871	1872	1873	1874	1875	1876	1877	1878	1879	MEANS.
January.....	5.40	2.20	9.00	12.00	4.40	11.00	5.00	10.00	5.00	10.00	7.400
February.....	3.00	4.40	8.00	8.00	4.00	3.00	5.40	6.20	2.60	3.00	4.460
March.....	2.00	2.40	5.00	5.00	4.00	2.40	5.20	4.00	4.00	3.60	3.460
April.....	7.00	4.40	3.00	2.00	5.00	2.30	6.00	4.20	3.00	2.40	3.380
May	4.00	2.00	4.30	2.30	3.00	2.00	4.00	4.00	4.00	3.00	3.260
June.....	2.40	3.00	4.00	4.00	2.00	5.00	3.00	3.40	3.40	4.00	3.420
July	7.00	4.00	6.00	5.00	3.00	4.00	2.00	5.00	2.50	5.00	3.750
August.....	1.50	3.00	8.00	5.00	5.00	5.00	3.00	7.40	4.00	5.40	4.730
September.....	2.00	3.00	9.00	5.00	4.50	6.00	7.00	4.00	5.40	4.00	4.990
October.....	8.00	4.00	9.20	4.40	8.00	7.20	6.00	7.00	5.00	3.00	6.180
November.....	4.00	3.40	8.00	5.00	6.00	6.00	5.00	9.00	7.00	3.60	5.400
December.....	3.20	7.00	9.20	5.30	3.00	9.00	11.00	6.00	3.00	6.00	6.240
TOTALS	37.50	42.80	82.70	63.00	51.90	62.90	62.60	70.20	48.90	53.00	57.550

1878 a plantation 40 yd to N. of gauge

RAINFALL AT *Rochester Bayness*

Lat..... Lon..... County of..... *Northumberland*
Rev J Nicholson
Rain Gauge, by..... Observer *Rev J Nicholson*

Diameter	<i>10</i>				<i>5</i>						
Height	<i>2</i>				<i>10</i>		<i>1</i>		<i>6</i>		
Altitude	<i>700</i>		<i>700</i>								
YEAR	1870	1871	1872	1873	1874	1875	1876	1877	1878	1879	MEANS.
January.....	<i>3.97</i>		<i>5.10</i>		<i>(2.69)</i>		<i>3.21</i>	<i>4.63</i>			
February.....	<i>2.39</i>		<i>4.16</i>		<i>1.75</i>		<i>5.03</i>	<i>3.27</i>			
March.....	<i>6.0</i>		<i>2.48</i>		<i>1.96</i>		<i>2.21</i>	<i>5.04</i>			
April.....	<i>74</i>		<i>3.36</i>		<i>2.19</i>		<i>3.96</i>	<i>4.69</i>			
May	<i>2.72</i>		<i>2.68</i>		<i>2.92</i>		<i>1.26</i>	<i>3.88</i>			
June.....	<i>2.14</i>		<i>3.32</i>		<i>1.24</i>		<i>2.56</i>	<i>2.75</i>			
July	<i>69</i>		<i>5.96</i>		<i>2.33</i>		<i>1.65</i>	<i>4.03</i>		<i>6.85</i>	
August.....	<i>1.74</i>		<i>2.08</i>		<i>5.15</i>		<i>2.55</i>	<i>8.05</i>		<i>2.70</i>	
September.....	<i>2.17</i>		<i>6.66</i>		<i>3.65</i>		<i>3.93</i>	<i>3.05</i>		<i>3.30</i>	
October.....	<i>4.90</i>		<i>6.60</i>		<i>7.68</i>		<i>2.62</i>	<i>3.90</i>		<i>1.42</i>	
November.....	<i>1.75</i>		<i>6.06</i>		<i>1.80</i>		<i>3.90</i>	<i>1.75</i>		<i>2.70</i>	
December.....	<i>4.31</i>		<i>5.75</i>		<i>5.50</i>		<i>9.55</i>	<i>2.12</i>		<i>4.42</i>	
TOTALS	<i>28.12</i>		<i>57.21</i>		<i>38.86</i>		<i>42.43</i>	<i>47.16</i>	<i>—</i>		

1878 No observations

RAINFALL AT *Bellingham Otterburn*

Lat..... Lon..... County of *Northumberland*
..... Rain Gauge, by..... Observer *Messrs J. Waring*

Diameter	<i>1 1/2</i>										
Height	<i>1</i>			<i>6</i>	<i>1</i>						
Altitude	<i>500</i>										
YEAR	1870	1871	1872	1873	1874	1875	1876	1877	1878	1879	MEANS.
January.....	<i>2.90</i>			<i>3.56</i>		<i>2.90</i>	<i>1.74</i>	<i>5.10</i>			
February.....	<i>3.07</i>			<i>1.74</i>		<i>1.62</i>	<i>3.60</i>	<i>3.27</i>			
March.....	<i>1.09</i>			<i>1.75</i>		<i>1.68</i>	<i>3.50</i>	<i>4.30</i>			
April.....	<i>1.12</i>			<i>.60</i>		<i>1.23</i>	<i>3.40</i>	<i>3.60</i>			
May	<i>1.82</i>			<i>2.12</i>		<i>1.20</i>	<i>1.45</i>	<i>3.25</i>			
June.....	<i>1.80</i>			<i>.68</i>		<i>1.95</i>	<i>2.55</i>	<i>2.04</i>			
July	<i>1.78</i>			<i>4.27</i>		<i>2.23</i>	<i>.95</i>	<i>2.77</i>			
August.....	<i>2.20</i>			<i>.91</i>		<i>2.55</i>	<i>2.55</i>	<i>6.68</i>			
September.....	<i>1.25</i>			<i>2.70</i>		<i>2.70</i>	<i>3.55</i>	<i>3.62</i>			
October.....	<i>4.55</i>			<i>2.48</i>		<i>4.88</i>	<i>2.30</i>	<i>4.40</i>			
November.....	<i>1.67</i>			<i>2.22</i>		<i>2.88</i>	<i>3.55</i>	<i>1.38</i>			
December.....	<i>4.20</i>			<i>1.07</i>		<i>2.20</i>	<i>9.90</i>	<i>1.95</i>			
TOTALS	<i>26.45</i>			<i>24.10</i>		<i>28.02</i>	<i>39.04</i>	<i>42.36</i>			

1874 return imp
1875 gauge slightly sheltered
70 no reply

RAINFALL AT Hexham Park End

Lat.....

Lon.....

County of Northumberland

Rain Gauge, by.....

Observer

Math A. Ridley Esq.

Diameter	<input type="checkbox"/> 10										
Height	4										
Altitude	276										
YEAR	1870	1871	1872	1873	1874	1875	1876	1877	1878	1879	MEANS.
January.....	2.98		3.63								
February.....	2.67		2.79								
March	2.82		2.35								
April.....	1.49		2.70								
May	1.37		2.13								
June.....	2.10		3.30								
July87		4.89								
August.....	2.04		3.74								
September.....	1.52		4.52								
October.....	⁺ 4.40		5.85								
November.....	1.80		4.85								
December.....	3.10		3.57 [#]								
TOTALS	25.16		44.32								

C

C

RAINFALL AT Rothbury White House Tower

Lat.....

Lon.....

County of Northumberland

Rain Gauge, by.....

Observer... Rev. D. Ainger

Diameter.....						5					
Height				1	1.4	1					
Altitude.....			400	410							
Year.....	1870	1871	1872	1873	1874	1875	1876	1877	1878	1879	MEANS.
January.....					2.18	3.69	1.20	5.47	3.68	2.27	
February.....					2.08	2.22	3.75	1.81	1.47	5.09	
March.....				# 2.89	1.58	1.18	2.33	5.26	1.02	1.45	
April.....				74	1.66	1.09	5.44	6.51	2.70	3.16	
May				2.39	2.22	1.19	1.15	4.59	3.20	2.24	
June.....				1.70	76	1.09	1.56	1.79	2.90	3.88	
July				2.50	2.79	2.32	.90	3.61	.60	5.48	
August.....				3.80	4.16	1.91	2.66	9.21	4.49	3.75	
September.....				2.51	2.72	3.52	3.75	2.49	2.40	1.09	
October.....				2.61	2.27	5.82	2.16	6.30	2.79	.55	
November.....				2.67	4.82	6.22	4.64	2.67	7.56	3.34	
December.....				.62	5.69	2.42	14.09	2.03	5.80	1.85	
TOTALS.....					32.93	32.67	43.63	51.74	38.61	34.15	

1878 The end of a wall 6ft high 10ft to E.

RAINFALL AT Alwinton, Harbottle

Lat..... Lon..... County of Northumberland

Rain Gauge, by..... Observer

Diameter		5									
Height		1.0									
Altitude		500			500						
YEAR	1870	1871	1872	1873	1874	1875	1876	1877	1878	1879	MEANS.
January.....			3.79	3.70	2.21	5.25	1.44	4.44	2.57	1.27	
February.....			3.33	1.92	1.84	1.09	3.73	2.26	1.40	3.44	
March.....			3.79	2.63	1.70	2.08	4.21	4.19	1.41	1.86	
April.....		# 1.79	4.25	.85	2.42	.92	3.75	5.14	3.00	2.59	
May		1.12	2.16	2.11	1.93	1.39	1.53	2.55	3.56	1.76	
June.....		2.03	3.45	1.66	.37	1.92	1.89	4.60	2.79	4.84	
July		2.98	4.77	2.97	2.81	2.36	1.18	3.49	.74	4.65	
August.....		1.37	3.06	3.73	4.45	1.93	1.42	8.45	4.56	3.96	
September.....		3.76	6.57	2.10	2.51	3.81	4.27	2.16	2.85	1.32	
October.....		3.58	7.17	3.05	3.19	4.62	2.56	4.69	3.02	.69	
November.....		2.54	5.88	2.56	3.99	5.50	4.45	2.87	6.54	2.30	
December.....		3.00	7.11	.82	4.53	2.47	10.84	1.82	2.47	1.66	
TOTALS			55.33	28.10	31.95	33.34	41.27	46.66	34.91	30.34	

Alwinton church 1 1/2 miles N.W.

RAINFALL AT

Biddleston

70

Lat.

Lon.

County of

Northumberland

Rain Gauge, by

Observer

P. Dodds

Diameter.5
Height.											1.
Altitude.											820
Year	1870	1871	1872	1873	1874	1875	1876	1877	1878	1879	MEANS.
January											
February.											
March											
April											
May											
June										# 4.37	
July										6.15	
August										4.01	
September.										1.31	
October68	
November										3.22	
December										1.10	
TOTALS											

1879 Shrubs 8ft high 20ft W.

Alwinton church 4 miles W.

Biddleston is situated at the foot of the
Cheviot Hills.

RAINFALL AT *Alnwick, Granton, Pyke*

Lat.....

Lon.....

County of...*Northumberland*

Rain Gauge, by.....

Observer *Fredk W. Collingwood Esq*

Diameter.....	<i>.8</i>										
Height.....	<i>4.4</i>										
Altitude.....	<i>534</i>				<i>517</i>						
YEAR.....	1870	1871	1872	1873	1874	1875	1876	1877	1878	1879	MEANS.
January.....	<i>1.96</i>	<i>1.88</i>	<i>2.86</i>	<i>2.46</i>	<i>2.20</i>	<i>3.29</i>	<i>1.14</i>	<i>4.11</i>	<i>3.14</i>	<i>1.40</i>	
February.....	<i>3.46</i>	<i>2.25</i>	<i>3.33</i>	<i>2.05</i>	<i>1.72</i>	<i>1.85</i>	<i>3.51</i>	<i>1.66</i>	<i>1.48</i>	<i>4.22</i>	
March.....	<i>1.13</i>	<i>1.47</i>	<i>3.28</i>	<i>1.46</i>	<i>1.84</i>	<i>1.20</i>	<i>3.00</i>	<i>4.49</i>	<i>1.39</i>	<i>1.68</i>	
April.....	<i>.72</i>	<i>3.64</i>	<i>4.02</i>	<i>.91</i>	<i>1.59</i>	<i>1.29</i>	<i>5.50</i>	<i>4.05</i>	<i>2.19</i>	<i>3.11</i>	
May.....	<i>1.62</i>	<i>.99</i>	<i>3.15</i>	<i>2.16</i>	<i>1.28</i>	<i>1.80</i>	<i>1.50</i>	<i>3.32</i>	<i>2.19</i>	<i>2.24</i>	
June.....	<i>1.53</i>	<i>2.81</i>	<i>1.84</i>	<i>1.10</i>	<i>1.61</i>	<i>1.81</i>	<i>2.51</i>	<i>1.87</i>	<i>2.64</i>	<i>4.73</i>	
July.....	<i>.83</i>	<i>4.51</i>	<i>4.33</i>	<i>1.75</i>	<i>2.15</i>	<i>2.00</i>	<i>.89</i>	<i>4.26</i>	<i>.92</i>	<i>6.82</i>	
August.....	<i>1.63</i>	<i>1.52</i>	<i>4.05</i>	<i>3.89</i>	<i>4.35</i>	<i>1.44</i>	<i>2.06</i>	<i>8.53</i>	<i>5.16</i>	<i>3.40</i>	
September.....	<i>1.26</i>	<i>2.31</i>	<i>6.37</i>	<i>2.67</i>	<i>2.66</i>	<i>3.00</i>	<i>4.26</i>	<i>2.79</i>	<i>2.79</i>	<i>1.06</i>	
October.....	<i>4.00</i>	<i>3.32</i>	<i>6.72</i>	<i>1.91</i>	<i>1.73</i>	<i>5.58</i>	<i>2.13</i>	<i>4.85</i>	<i>2.71</i>	<i>.92</i>	
November.....	<i>3.10</i>	<i>2.58</i>	<i>4.74</i>	<i>2.32</i>	<i>2.68</i>	<i>6.21</i>	<i>4.56</i>	<i>1.75</i>	<i>7.11</i>	<i>2.88</i>	
December.....	<i>4.54</i>	<i>2.89</i>	<i>6.18</i>	<i>.74</i>	<i>1.98</i>	<i>2.39</i>	<i>9.93</i>	<i>1.72</i>	<i>1.65</i>	<i>1.38</i>	
TOTALS.....	<i>25.38</i>	<i>30.17</i>	<i>50.87</i>	<i>23.42</i>	<i>25.79</i>	<i>31.86</i>	<i>40.99</i>	<i>43.40</i>	<i>33.37</i>	<i>33.84</i>	

C C C

RAINFALL AT *Alnwick Castle*

700

Lat.

Lon.

County of *Northumberland*

Rain Gauge, by

Observer

The Met. Council

Diameter									5		
Height									4		
Altitude									178		
Year	1870	1871	1872	1873	1874	1875	1876	1877	1878	1879	MEANS.
January									3.38	.91	
February. . .									1.27	5.68	
March99	1.14	
April									1.27	2.92	
May									3.87	2.58	
June									2.65	3.96	
July64	5.54	
August									5.05	4.43	
September ..									2.66	.92	
October									2.83	.83	
November ..									8.57	2.55	
December ..									4.03	1.90	
TOTALS ..									37.21	33.36	

RAINFALL AT Chewot Broadstruther

70

Lat..... Lon..... County of Northumberland
 Rain Gauge, by..... Observer E. P. Hughes

Diameter.....								.8			
Height.....					2.2		4.				
Altitude.....					1693			1692			
Year.....	1870	1871	1872	1873	1874	1875	1876	1877	1878	1879	MEANS.
January.....						3.75	2.25	3.50	2.75	1.13	
February.....						1.25	5.50	1.50	6.50	4.87	
March.....					# 2.00	1.50	2.75	2.25	2.50	1.75	
April.....					1.75	1.50	14.75	3.75	2.94	3.13	
May.....					1.38	1.87	1.25	4.87	4.75	4.00	
June.....					3.00	3.37	2.50	3.00	3.75	13.62	
July.....					2.87	2.50	1.13	13.88	1.25	13.88	
August.....					3.75	2.51	9.50	16.75	7.87	13.37	
September.....					4.13	3.75	17.00	3.25	4.00	1.38	
October.....					2.50	9.25	1.87	6.75	3.38	3.87	
November.....					3.75	3.50	3.50	2.75	6.75	6.75	
December.....					1.25	1.75	17.00	1.88	3.75	9.88	
TOTALS.....					26.38	36.50	79.00	64.13	50.19	77.63	

1879 Total appears to be from 10 to 15 inches
 too high

RAINFALL AT *Paston* [*Coldstream*]

700

Lat.

Lon.

County of *Northumberland*

Rain Gauge, by

Observer. *B. P. Selby*

Diameter....			8					8	.	.	
Height			3.4					1.	.	.	
Altitude			327					.	.	.	
Year	1870	1871	1872	1873	1874	1875	1876	1877	1878	1879	MEANS.
January				2.00	.96	1.86	1.18	3.80	3.06	1.42	
February....				1.98	1.62	1.37	2.56	.80	1.33	2.59	
March				1.26	1.24	.99	2.09	3.33	1.02	1.60	
April28	1.22	.83	4.65	3.88	1.81	2.39	
May				1.79	1.29	.94	.80	2.47	2.01	2.25	11.55
June				1.58	.75	1.37	1.58	2.77	1.94	3.76	
July				2.87	3.56	2.62	1.11	4.18	1.13	5.88	
August				2.69	3.00	1.58	1.65	8.21	5.68	2.58	
September ..			#	4.88	1.78	1.72	2.05	4.34	2.01	2.39	.80
October				4.26	4.33	2.55	3.76	1.22	4.38	2.52	.96
November ..				4.59	2.20	3.98	4.58	2.20	1.83	6.62	3.07
December ..				4.16	.91	4.91	2.01	9.07	1.55	3.51	1.35
TOTALS ..				23.67	26.80	23.96	32.45	39.21	33.02	28.65	

1876 April 28th 1.94 in Decr 21st 2.20 in between
10 a.m. Decr 20th and 10 p.m. Decr 21st (36 hrs) 3.40 in
1877 Gauge moved during the year

Kirknewton church 4 miles S.E.

RAINFALL AT *Wooler Millfield*

Lat.....

Lon.....

County of.....

Northumberland

Rain Gauge, by.....

Observer.....

G. H. Gray Esq.

Diameter5										
Height4	.9	.6					.4	.6	.8	
Altitude	200		200 ^π								
YEAR	1870	1871	1872	1873	1874	1875	1876	1877	1878	1879	MEANS.
January.....	1.31	.52	2.95	2.94	1.45	2.29	1.31	3.93	3.21	.43	2.034
February.....	3.30	3.02	2.96	1.69	1.46	.68	3.31	1.71	.72	2.43	2.128
March.....	.93	1.39	3.13	1.35	1.10	1.70	2.51	3.59	1.28	1.64	1.862
April.....	.95	4.04	4.13	.35	1.26	.94	3.85	2.88	1.68	2.15	2.223
May	1.10	1.12	3.19	1.85	1.68	1.33	.80	2.83	2.06	2.01	1.827
June.....	2.22	2.82	1.99	1.08	1.11	2.26	2.33	1.78	1.80	3.98	2.137
July80	2.80	3.34	2.92	2.68	1.92	1.07	4.06	.96	6.13	2.668
August.....	1.43	1.47	3.18	3.46	2.92	1.53	3.08	8.38	6.12	2.44	3.401
September.....	.94	4.00	7.23	1.80	1.83	2.72	3.14	1.94	2.16	.57	2.633
October.....	3.62	2.32	5.46	4.43	2.01	3.98	1.68	3.65	1.88	.62	2.965
November.....	2.65	3.65	5.59	1.38	4.40	4.46	2.36	1.47	7.29	1.80	3.505
December.....	4.59	1.98	4.77	1.53	3.38	2.51	8.62	1.33	2.35	1.53	3.259
TOTALS	23.84	29.13	48.22	24.78	25.28	26.32	34.06	37.55	31.51	25.73	30.642

1871 G on Lawn away from trees or shelter, exposed on all sides

RAINFALL AT *Bamburgh N. Sunderland*

Lat..... Lon..... County of *Northumberland*
 Rain Gauge, by..... Observer *Rev^d J. R. Simpson*

Diameter	<i>.8</i>										
Height	<i>1.2</i>										
Altitude	<i>49.</i>		<i>70.</i>								
YEAR	1870	1871	1872	1873	1874	1875	1876	1877	1878	1879	MEANS.
January.....	<i>1.53</i>	<i>1.17</i>	<i>2.80</i>	<i>1.59</i>							
February.....	<i>2.78</i>	<i>2.31</i>	<i>2.75</i>	<i>1.88</i>							
March.....	<i>1.17</i>	<i>.93</i>	<i>3.11</i>	<i>1.99</i>							
April.....	<i>.40</i>	<i>3.53</i>	<i>2.24</i>	<i>.75</i>							
May.....	<i>1.19</i>	<i>1.37</i>	<i>1.98</i>	<i>1.99</i>							
June.....	<i>1.25</i>	<i>1.19</i>	<i>1.24</i>	<i>1.03</i>							
July.....	<i>1.07</i>	<i>2.82</i>	<i>2.88</i>	<i>2.90</i>							
August.....	<i>1.03</i>	<i>1.12</i>	<i>2.89</i>	<i>2.96</i>							
September.....	<i>.84</i>	<i>2.75</i>	<i>4.64</i>	<i>2.85</i>							
October.....	<i>2.35</i>	<i>2.26</i>	<i>6.99</i>	<i>3.21</i>							
November.....	<i>4.00</i>	<i>1.72</i>	<i>4.43</i>	<i>1.23</i>							
December.....	<i>4.96</i>	<i>1.46</i>	<i>3.91</i>	<i>.72</i>	<i>#</i>						
TOTALS	<i>22.57</i>	<i>22.63</i>	<i>39.86</i>	<i>23.10</i>							

C C C

RAINFALL AT *Belford Middleton Hall*

Lat.....

Lon.....

County of *Northumberland*

Rain Gauge, by.....

Observer

J. T. Lathur Esq. L.C.

Diameter	<i>L</i> <i>.10</i>
Height	<i>2</i>	.	.	.	<i>2.6</i>	<i>3</i>	<i>x</i>
Altitude	<i>240</i>	<i>510</i>
YEAR	1870	1871	1872	1873	1874	1875	1876	1877	1878	1879	MEANS.
January.....	<i>1.30</i>	<i>1.45</i>	<i>3.98</i>	<i>1.39</i>	<i>90</i>	<i>1.94</i>	<i>.80</i>	<i>2.98</i>	<i>2.77</i>	<i>.91</i>	<i>1.842</i>
February.....	<i>.68</i>	<i>2.60</i>	<i>1.43</i>	<i>1.30</i>	<i>2.07</i>	<i>1.06</i>	<i>3.49</i>	<i>2.01</i>	<i>.98</i>	<i>3.38</i>	<i>1.900</i>
March.....	<i>1.02</i>	<i>1.11</i>	<i>1.29</i>	<i>1.60</i>	<i>1.63</i>	<i>.65</i>	<i>2.95</i>	<i>2.51</i>	<i>1.02</i>	<i>1.05</i>	<i>1.483</i>
April.....	<i>.72</i>	<i>4.20</i>	<i>3.30</i>	<i>.58</i>	<i>.84</i>	<i>1.08</i>	<i>3.93</i>	<i>3.16</i>	<i>1.12</i>	<i>2.17</i>	<i>2.110</i>
May	<i>.97</i>	<i>1.25</i>	<i>3.69</i>	<i>2.12</i>	<i>1.75</i>	<i>.38</i>	<i>1.01</i>	<i>2.68</i>	<i>1.87</i>	<i>2.28</i>	<i>1.800</i>
June.....	<i>1.09</i>	<i>2.11</i>	<i>2.26</i>	<i>1.17</i>	<i>.92</i>	<i>3.86</i>	<i>2.62</i>	<i>1.89</i>	<i>2.31</i>	<i>4.05</i>	<i>2.228</i>
July	<i>1.85</i>	<i>1.09</i>	<i>3.84</i>	<i>3.21</i>	<i>2.22</i>	<i>2.57</i>	<i>1.32</i>	<i>4.61</i>	<i>.76</i>	<i>6.15</i>	<i>2.762</i>
August.....	<i>.93</i>	<i>1.52</i>	<i>3.84</i>	<i>3.90</i>	<i>3.42</i>	<i>1.93</i>	<i>2.70</i>	<i>7.78</i>	<i>4.79</i>	<i>3.31</i>	<i>3.412</i>
September.....	<i>.98</i>	<i>4.09</i>	<i>4.43</i>	<i>3.88</i>	<i>1.76</i>	<i>2.16</i>	<i>3.17</i>	<i>2.28</i>	<i>2.48</i>	<i>.72</i>	<i>2.595</i>
October.....	<i>2.69</i>	<i>2.29</i>	<i>7.09</i>	<i>3.65</i>	<i>1.51</i>	<i>4.64</i>	<i>1.45</i>	<i>4.08</i>	<i>2.48</i>	<i>1.04</i>	<i>3.092</i>
November.....	<i>2.86</i>	<i>2.72</i>	<i>4.62</i>	<i>2.04</i>	<i>4.09</i>	<i>3.54</i>	<i>3.20</i>	<i>2.09</i>	<i>5.58</i>	<i>2.07</i>	<i>3.281</i>
December.....	<i>4.12</i>	<i>1.55</i>	<i>3.71</i>	<i>.97</i>	<i>3.09</i>	<i>1.32</i>	<i>6.95</i>	<i>1.89</i>	<i>3.39</i>	<i>1.03</i>	<i>2.802</i>
TOTALS	<i>19.21</i>	<i>25.90</i>	<i>43.48</i>	<i>25.81</i>	<i>24.20</i>	<i>25.13</i>	<i>33.59</i>	<i>37.96</i>	<i>29.55</i>	<i>28.16</i>	<i>29.307</i>

C C C

RAINFALL AT *Howick*

Lat.....

Lon.....

County of... *Northumberland*

..... Rain Gauge, by.....

Observer

Carl Gray N.G.

Diameter.....	.8
Height.....	.10
Altitude.....	121
YEAR.....	1870	1871	1872	1873	1874	1875	1876	1877	1878	1879	MEANS.
January.....	1.74	.94	2.85	1.24	1.59	2.99	.67	3.53	3.34	1.59	2.048
February.....	2.76	2.85	2.74	2.35	1.10	1.76	4.14	1.90	1.16	3.55	2.431
March.....	.97	.62	4.13	2.10	.72	.78	2.69	3.19	1.22	.84	1.726
April.....	.46	3.66	1.99	.80	1.46	1.03	3.66	4.05	1.11	2.15	2.037
May.....	1.48	1.28	2.82	1.49	2.39	.75	1.34	2.88	2.61	2.73	1.977
June.....	.78	1.39	1.47	1.19	.43	2.83	3.02	1.66	2.60	3.80	1.917
July.....	.62	4.15	2.70	3.11	1.96	2.33	1.53	3.46	.60	5.56	2.602
August.....	1.00	1.33	2.63	2.75	3.17	1.70	2.41	6.89	5.16	3.63	3.067
September.....	1.44	3.19	5.00	2.35	1.70	3.20	3.32	2.25	2.59	.86	2.590
October.....	2.88	2.95	6.88	3.23	1.31	3.56	1.65	4.48	2.48	.91	3.033
November.....	3.47	1.28	4.04	1.86	4.07	4.24	4.55	2.04	5.54	3.06	3.415
December.....	⁺ 5.39	1.88	4.07	.97	4.99	2.06	8.13	1.99	4.48	1.14	3.510
TOTALS.....	22.99	25.52	41.32	23.44	24.89	27.23	37.11	38.32	32.89	29.82	30.353

1871 Gauge about 1 mile W from the Sea & 10 yards S of a wall 10 ft. high 14 yds. W from a wall 10 ft. high 40 yds S & 80 yds W from a thin belt of deciduous trees

Howick church 500 yds E.S.E.

RAINFALL AT *Siderton Lillburn Tower*

Lat.....

Lon.....

County of *Northumberland*

Rain Gauge, by.....

Observer *E. J. Collingwood Esq.*

Diameter.....	<input checked="" type="checkbox"/> .10										
Height.....	6										
Altitude.....	300.										
YEAR.....	1870	1871	1872	1873	1874	1875	1876	1877	1878	1879	MEANS.
January.....	1.87	.31	2.88	1.88	1.33	1.86	1.01	3.65	2.38	1.00	1.817
February.....	2.76	2.43	2.62	2.12	1.50	3.18	2.79	2.50	2.26	3.00	2.516
March.....	1.19	.85	2.92	1.73	1.84	1.21	2.96	3.49	1.30	1.38	1.887
April.....	62	3.62	3.85	.48	.89	1.97	4.38	3.56	1.96	2.40	2.373
May.....	1.62	.90	2.52	1.50	2.09	1.11	1.17	3.71	2.46	2.05	1.913
June.....	1.26	2.84	1.50	1.04	.91	2.76	2.33	1.67	1.93	4.47	2.071
July.....	63	2.54	5.63	1.90	2.00	1.62	.81	2.89	1.06	7.04	2.612
August.....	1.92	1.24	3.42	3.73	3.16	1.54	2.84	5.84	3.74	2.72	3.015
September.....	1.05 ⁺	3.67	5.98	2.47	1.25	2.26	3.49	2.03	2.83	.80	2.553
October.....	3.43	2.73	5.98	3.22	1.80	3.81	1.43	4.02	3.01	.62	3.005
November.....	2.44	2.71	4.43	2.47	4.02	4.64	3.34	1.74	9.45	2.66	3.790
December.....	4.48 ⁺	1.60	4.86	1.34	3.44	2.89	9.80	1.30	7.13	.60	3.744
TOTALS.....	23.27	25.44	46.59	23.88	24.23	28.85	36.35	36.40	39.51	28.74	31.326

RAINFALL AT Wooler Middleton Hall, 70

Lat..... Lon..... County of... Northumberland
 Rain Gauge, by..... Observer... G. P. Ruyhet.....

Diameter.....								.5			
Height				1	-						
Altitude.....				500	510						
Year.....	1870	1871	1872	1873	1874	1875	1876	1877	1878	1879	MEANS.
January.....					1.69	2.67	1.77	3.75			
February.....					2.33	.80	2.40	2.50			
March.....					1.05	(1.77)	3.50	3.50			
April.....					2.49	1.27	4.50	3.50			
May					1.25	1.39	2.50	2.75			
June.....					2.20	1.20	2.50	2.75			
July					1.00	3.30	1.50	1.50			
August.....					2.10	1.00	2.50	4.75			
September.....					2.20	2.50	3.45	1.00			
October.....					2.40	5.35	3.00	2.25			
November.....					3.00	3.00	4.00	2.50			
December.....					5.40	2.75	5.50	2.00			
TOTALS					27.11	(27.00)	37.12	32.75	—		

1875 March amount computed by differentiation
 1878 imp

RAINFALL AT Felkington (Duddo)

70

Lat.....

Lon.....

County of *Northumberland*

Rain Gauge, by.....

Observer...

David Carr Esq

Diameter.....				5							
Height				10							
Altitude.....											
Year.....	1870	1871	1872	1873	1874	1875	1876	1877	1878	1879	MEANS.
January.....											
February.....											
March.....				<i>#</i> <i>* 1.68</i>							
April.....				<i>.64</i>							
May				<i>2.69</i>							
June.....				<i>1.32</i>							
July				<i>3.96</i>							
August.				<i>3.55</i>							
September.....				<i>3.39</i>							
October.....				<i>3.46</i>							
November.....				<i>1.50</i>							
December.....				<i>1.04</i> <i>#</i>							
TOTALS											

** No observations for first 5 days*