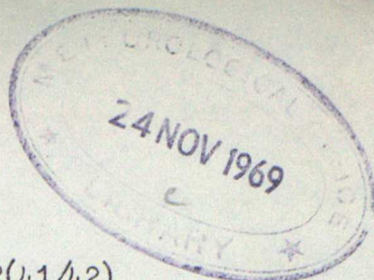


51



Decimal 551.542(41/42)  
Index 551.543.6

Meteorological Office  
Climatological Services (Met 0 3)  
Climatological Memorandum No. 51  
  
1931-60 Averages of Barometric Pressure  
at 0900 GMT reduced to Mean Sea Level  
  
for the British Isles  
  
by  
  
R.E. BOOTH and A.N. WALTON



MO Dupo 3a

Map of climatological districts showing places for which 1931-1960 pressure averages have been given.

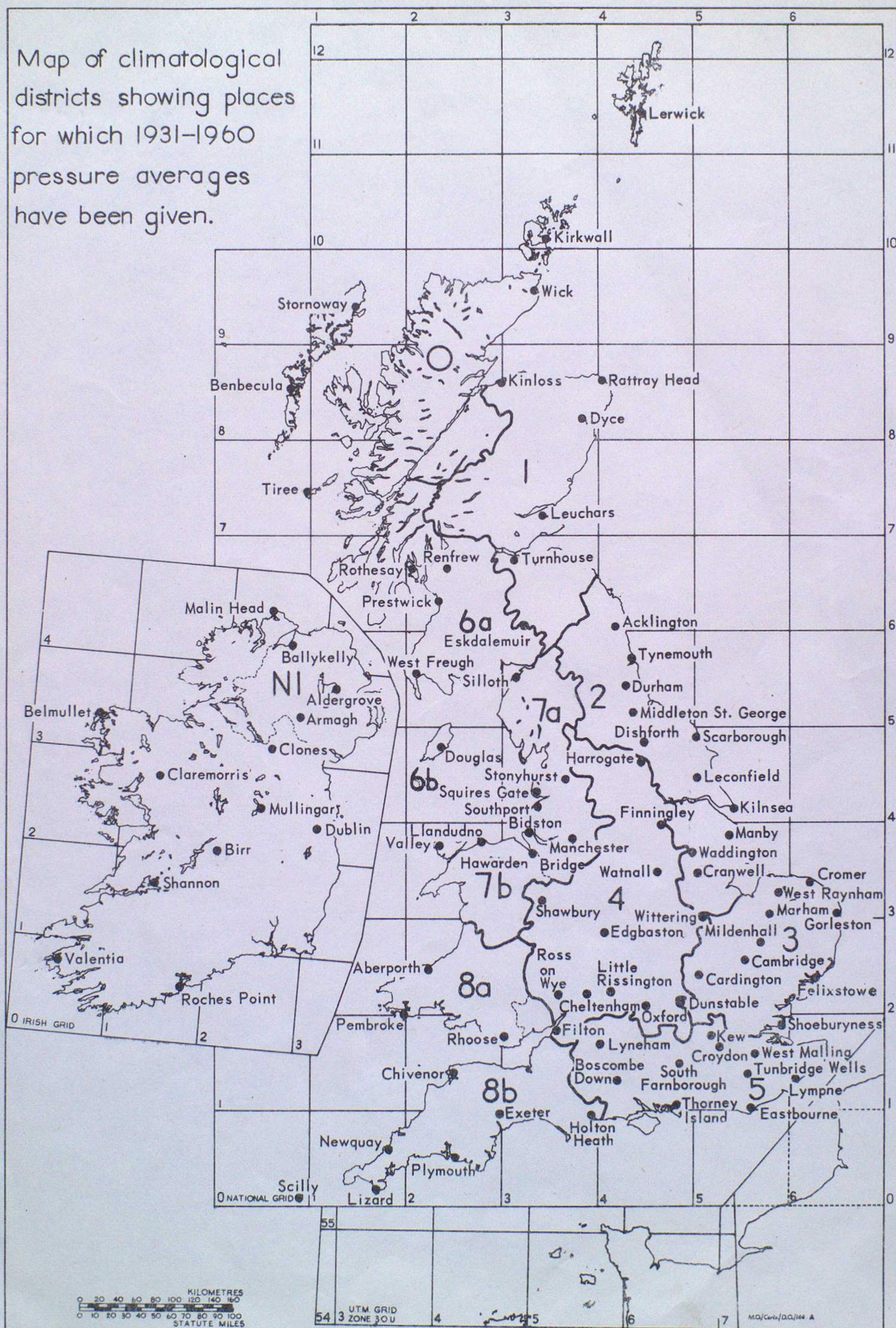
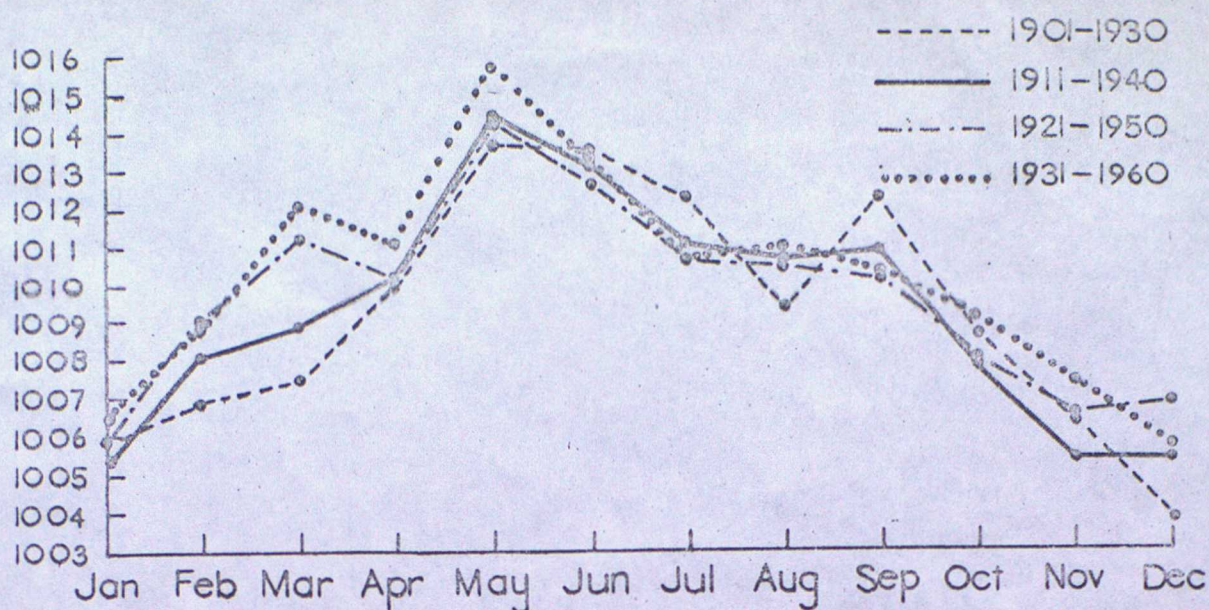
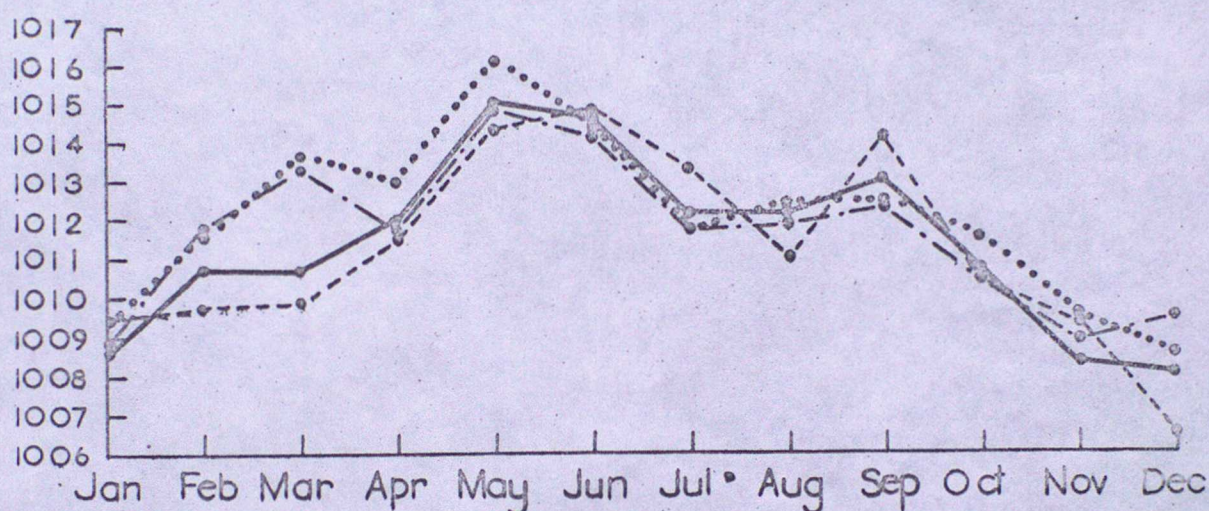


Fig 1. Comparison of 30-year averages

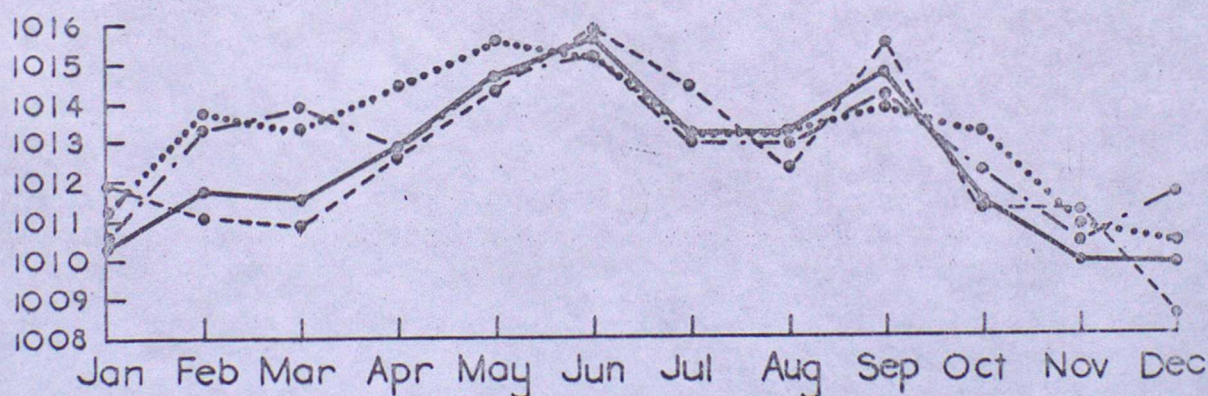
Lerwick



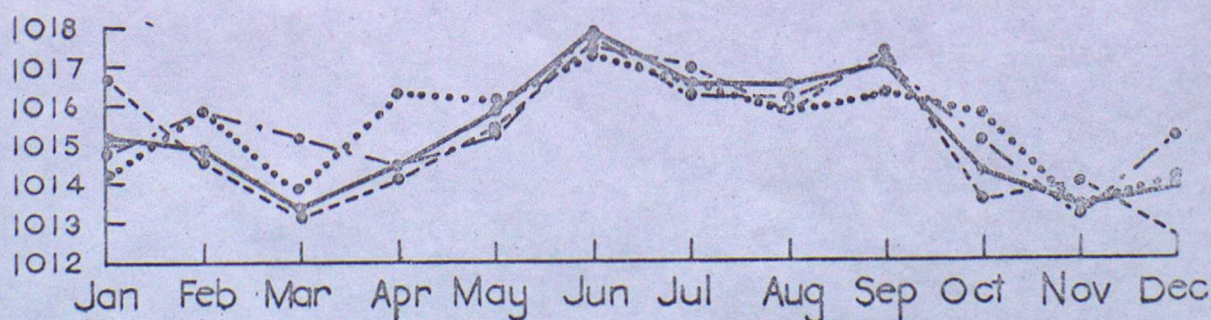
Aberdeen



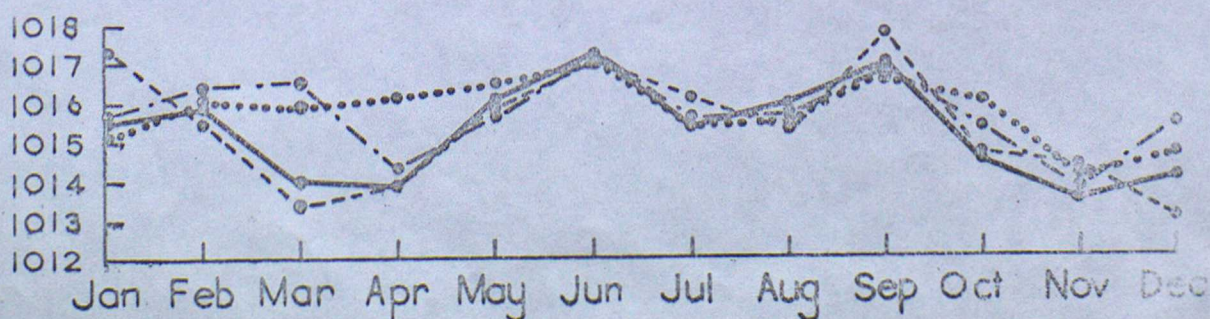
Armagh



Scilly



Kew



1931-60 Averages of Barometric Pressure at 0900 GMT  
reduced to mean sea level for the British Isles

by

R.E. BOOTH and A.N. WALTON

Introduction

The paper contains tables and maps of average 0900 GMT barometric pressure reduced to mean sea level covering the period 1931-60. It compares for various stations these averages with averages over previous 30 year periods and also comments on the highest and lowest pressures recorded in the British Isles.

Presentation

The mean pressure is expressed in millibars. A millibar = 1000 dynes  $\text{cm}^{-2}$  and is the pressure due to 750062 mm of mercury at 0°C and standard gravity 980.665  $\text{cm}/\text{sec}^2$ . Corrections for index error, gravity, temperature and height are applied to the barometer readings at the time of observation to obtain pressure at mean sea level. The averages given in Table I for 62 stations in England and Wales, 16 in Scotland and 13 in Ireland (see facing map) refer exclusively to the period 1931-60. The stations are arranged under districts as in the Monthly Weather Report. The maps following the table show the distribution of average pressure at mean sea level at 0900 GMT for each calendar month and for the year as a whole during the period 1931-60. They may be compared with similar maps for the period 1901-30 published in the Climatological Atlas of the British Isles M.O.488.

Correction for time of Observation

Before 1945 barometers at official meteorological stations were usually read at 0700 GMT, but the morning hour of observation for climatological purposes was then changed to 0900 GMT and has remained so for more than 20 years. A correction factor, based on the mean diurnal variation of pressure, has been applied to the readings taken before 1945 to make them comparable with readings made after that date. Apart from the rapid and irregular changes of pressure associated with the movement and development of weather systems, small regular fluctuations occur, having a 12 hourly period, the maxima being at 1000 and 2200 hours local time and the minima at 0400 and 1600 hours. These diurnal extremes occur at the same hour, local time, everywhere, the range being greatest at the equator and insignificant north of 60°N. At 52°N the range is about 0.8 mb.

Averages for previous periods

Fig 1 presents graphically monthly averages of pressure, reduced to mean sea level, at five stations for various 30 year periods. All the averages refer to 0900 GMT, values having been adjusted to this time where necessary. The values for 1901-30 were taken from the Climatological Atlas of the British Isles M.O.488, those for 1911-40 were computed especially for this comparison, those covering the period 1921-50, while not published, were used in the Monthly Weather Report from 1954-1965 and those for the period 1931-60 are for use in this report from January 1966.

/ It

It will be seen that, especially in the north, average pressure during the early spring has been increasing each decade (see Lerwick and Aberdeen) but this increase has been halted in the extreme south (see Scilly). Only small differences are apparent in the 30 year averages during the early summer but there is a tendency to the same kind of variation. In the early autumn the tendency seems to have been reversed in the north, the highest average September pressures being during the period 1901-30 (Lerwick and Aberdeen) but this tendency is only a temporary feature as by November the increase in mean pressure characteristic of the early spring has been renewed. Two maxima are clearly indicated in all the graphs, in the north one in May and the other in September (Lerwick and Aberdeen) but further south the first maximum is delayed until June. The first maximum is the more pronounced in the north, but in the south both maxima are nearly equal. It will be seen that mean pressure increases from north to south but the range of pressure over the year increases considerably towards the north.

#### Extreme Values

Table II gives the highest and lowest mean sea level pressure known to have been recorded at an official meteorological station in the British Isles making observations of pressure at one or more fixed hours a day. It is possible that pressures outside these limits have occurred at other times or at other places not recording pressure but the table gives a good indication of the range of values within which pressure may be expected to lie in any particular month.

It will be seen from the table that both the extreme maximum and minimum values occur in January and that while the upper extreme values seem to be lowest during August, lower extreme values are highest in June. The absolute monthly range of pressure is at a maximum during January and gradually decreases to a minimum of less than half the January range in July. Most of the extreme values are recorded in the northern half of the country, and it will be seen that there is a greater range in the monthly minimum values than in the maximum values - more than 50 mb against less than 20 mb respectively.

#### Acknowledgement

Data for the Irish Republic were compiled from values kindly supplied by the Meteorological Service, Dublin.

TABLE I

Monthly Averages of Mean Sea Level Barometric Pressure (mb)  
at 0900 GMT for various stations in the British Isles

	Lat.	Long.	Jan.	Feb.	Mar.	Apr.	May	Jun.	Jul.	Aug.	Sep.	Oct.	Nov.	Dec.	Year
<u>District 0 Scotland N</u>															
Benbecula	57 28N	07 22W	1007.4	1010.4	1011.8	1012.5	1015.1	1013.6	1011.3	1011.1	1011.0	1009.7	1007.8	1006.3	1010.7
Kirkwall	58 58N	02 54W	1007.1	1009.7	1012.3	1011.6	1015.2	1013.4	1010.8	1011.2	1010.7	1009.5	1007.6	1006.1	1010.4
Lerwick	60 08N	01 11W	1006.5	1008.8	1012.1	1011.1	1015.7	1013.2	1010.7	1011.0	1010.3	1009.1	1007.4	1005.7	1010.1
Stornoway	58 13N	06 20W	1007.1	1010.1	1011.9	1012.0	1015.4	1013.6	1011.2	1011.2	1010.9	1009.6	1007.7	1006.0	1010.5
Wick	58 27N	03 05W	1007.6	1010.1	1012.4	1012.0	1015.8	1013.7	1011.1	1011.5	1011.1	1010.0	1008.1	1006.7	1010.9
<u>District 1 Scotland E</u>															
Dyce	57 12N	02 12W	1009.4	1011.6	1013.6	1013.0	1016.1	1014.4	1011.7	1012.3	1012.4	1011.5	1009.5	1008.5	1012.0
Kinloss	57 39N	03 34W	1008.6	1010.8	1012.5	1012.5	1015.7	1013.7	1011.3	1011.6	1011.5	1010.5	1008.8	1007.4	1011.3
Leuchars	56 23N	02 52W	1010.1	1012.2	1013.7	1013.4	1016.1	1014.5	1011.9	1012.4	1012.8	1011.9	1009.9	1009.1	1012.3
Rattray Head	57 37N	01 50W	1008.5	1010.8	1013.1	1012.5	1016.0	1014.2	1011.6	1012.0	1011.9	1010.7	1008.9	1007.5	1011.5
Turnhouse	55 57N	03 21W	1010.6	1012.8	1014.0	1013.8	1016.2	1014.7	1012.3	1012.7	1013.2	1012.4	1010.4	1009.6	1012.7
<u>District 6a Scotland W</u>															
Eskdalemuir	55 19N	03 12W	1011.3	1013.3	1014.3	1014.1	1015.8	1014.8	1012.4	1012.9	1013.6	1012.9	1010.9	1010.5	1013.1
Prestwick	55 30N	03 35W	1010.9	1013.0	1014.3	1014.3	1015.9	1014.8	1012.6	1012.8	1013.4	1012.5	1010.4	1009.9	1012.9
Renfrew	55 52N	04 24W	1010.8	1013.0	1014.0	1014.1	1016.1	1014.8	1012.4	1012.8	1013.3	1012.5	1010.5	1009.7	1012.8
Rothsay	55 50N	05 02W	1010.4	1012.9	1013.3	1013.9	1015.8	1014.8	1012.6	1012.8	1012.9	1012.2	1010.4	1009.5	1012.6
Tiree	56 30N	06 53W	1008.5	1011.5	1012.3	1013.1	1015.4	1014.2	1011.9	1012.0	1012.0	1010.9	1008.7	1007.5	1011.5
West Freugh	54 51N	04 57W	1011.0	1013.3	1013.9	1014.5	1016.1	1015.3	1013.1	1013.4	1013.9	1013.3	1010.7	1010.3	1013.0
<u>District 6b Isle of Man</u>															
Douglas	54 10N	04 29W	1011.8	1014.0	1014.2	1015.0	1016.2	1015.8	1013.7	1013.6	1014.5	1013.8	1011.7	1011.3	1013.8
<u>District 2 England NE</u>															
Acklington	55 18N	01 38W	1011.0	1012.7	1014.3	1013.9	1016.1	1014.9	1012.5	1013.0	1013.6	1012.8	1010.7	1010.2	1013.0
Cranwell	53 02N	00 30W	1013.6	1014.9	1015.5	1015.5	1016.5	1016.3	1014.4	1014.5	1015.6	1014.9	1012.9	1013.1	1014.8
Dishforth	54 08N	01 25W	1012.5	1013.9	1014.9	1015.1	1016.5	1015.7	1013.5	1013.9	1014.8	1014.1	1011.9	1011.9	1014.0
Durham	54 46N	01 35W	1011.9	1013.4	1014.7	1014.4	1016.1	1015.2	1012.6	1013.3	1014.0	1013.2	1011.3	1011.1	1013.4
Kilnsea	53 57N	00 09W	1012.8	1014.0	1015.0	1014.9	1016.3	1015.9	1013.9	1014.0	1015.0	1014.2	1012.1	1012.3	1014.2
Leconfield	53 53N	00 26W	1012.5	1013.9	1014.9	1014.8	1016.2	1015.5	1013.4	1013.6	1014.7	1014.0	1012.0	1012.0	1014.0
Manby	53 21N	00 05E	1013.2	1014.4	1015.3	1015.3	1016.5	1016.0	1014.1	1014.2	1015.4	1014.5	1012.7	1012.8	1014.5

	Lat.	Long.	Jan.	Feb.	Mar.	Apr.	May	Jun.	Jul.	Aug.	Sep.	Oct.	Nov.	Dec.	Year
<u>District 2 England NE (cont.)</u>															
Middleton St. George	54° 31'N	01° 25'W	1011.9	1013.5	1014.8	1014.7	1016.3	1015.4	1013.1	1013.4	1014.3	1013.6	1011.3	1011.3	1013.6
Soarborough	54° 17'N	00° 24'W	1012.2	1013.5	1014.7	1014.6	1016.1	1015.4	1013.2	1013.5	1014.4	1013.6	1011.7	1011.7	1013.7
Tynemouth	55° 01'N	01° 25'W	1011.5	1013.2	1014.5	1014.5	1016.5	1015.3	1013.0	1013.3	1014.0	1013.2	1011.2	1010.8	1013.4
Waddington	53° 10'N	00° 31'W	1013.6	1014.9	1015.5	1015.4	1016.5	1016.3	1014.3	1014.5	1015.6	1014.9	1012.8	1012.9	1014.8
<u>District 3 England E</u>															
Cambridge	52° 12'N	00° 08'E	1014.4	1015.3	1015.7	1015.8	1016.4	1016.7	1014.9	1015.0	1016.1	1015.4	1013.6	1014.0	1015.3
Cardington	52° 07'N	00° 25'W	1014.5	1015.5	1015.6	1015.8	1016.4	1016.6	1015.2	1014.9	1016.0	1015.4	1013.6	1014.0	1015.3
Gromer	52° 56'N	01° 17'E	1013.7	1014.7	1015.6	1015.4	1016.1	1016.1	1014.5	1014.3	1015.4	1014.8	1012.9	1013.3	1014.7
Dunstable	51° 53'N	00° 33'W	1014.7	1015.7	1015.6	1015.9	1016.4	1016.8	1015.2	1015.1	1016.1	1015.6	1013.8	1014.3	1015.4
Felixstowe	51° 57'N	01° 20'E	1014.6	1015.5	1015.9	1015.8	1016.5	1016.8	1015.2	1015.0	1016.2	1015.5	1013.8	1014.2	1015.4
Gorleston	52° 35'N	01° 43'E	1014.1	1015.2	1015.8	1015.5	1016.4	1016.4	1014.7	1014.6	1015.7	1015.1	1013.3	1013.7	1015.0
Marham	52° 39'N	00° 34'E	1014.3	1015.3	1015.6	1015.5	1016.3	1016.4	1014.7	1014.7	1015.8	1015.1	1013.3	1013.7	1015.0
Mildenhall	52° 22'N	00° 28'E	1014.2	1015.1	1015.5	1015.6	1016.3	1016.4	1014.7	1014.7	1015.9	1015.3	1013.3	1013.7	1015.1
Shrewsbury	51° 32'N	00° 49'E	1015.1	1015.9	1016.1	1016.1	1016.6	1017.1	1015.6	1015.5	1016.6	1016.0	1014.2	1014.6	1015.8
West Rayham	52° 47'N	00° 44'E	1013.8	1014.6	1015.4	1015.3	1016.1	1016.1	1014.4	1014.3	1015.5	1014.9	1012.9	1013.2	1014.7
<u>District 4 Midland Counties</u>															
Cheltenham	51° 54'N	02° 03'W	1014.6	1015.8	1015.6	1016.2	1016.4	1016.8	1015.2	1015.3	1016.3	1015.6	1013.6	1014.1	1015.5
Edgbaston	52° 28'N	01° 56'W	1014.1	1015.4	1015.6	1015.9	1016.6	1016.7	1015.0	1015.0	1015.9	1015.4	1013.3	1013.6	1015.2
Filton	51° 31'N	02° 35'W	1014.8	1016.1	1015.6	1016.3	1016.6	1017.0	1015.6	1015.4	1016.4	1015.8	1013.9	1014.3	1015.7
Frimley	53° 29'N	01° 00'W	1013.1	1014.3	1015.1	1015.2	1016.3	1015.9	1013.9	1014.2	1015.1	1014.4	1012.3	1012.4	1014.4
Harrogate	54° 01'N	01° 33'W	1012.7	1014.0	1015.0	1014.9	1016.2	1015.7	1013.5	1013.8	1014.7	1014.0	1012.0	1011.9	1014.0
Little Rissington	51° 42'N	01° 42'W	1014.4	1015.6	1015.5	1015.8	1016.4	1016.8	1015.2	1015.2	1016.3	1015.9	1013.7	1014.1	1015.4
Oxford	51° 46'N	01° 16'W	1014.8	1015.8	1015.8	1016.2	1016.5	1016.9	1015.3	1015.3	1016.5	1015.9	1013.9	1014.4	1015.6
Ross-on-Wye	51° 55'N	02° 35'W	1014.3	1015.6	1015.4	1016.0	1016.5	1016.8	1015.2	1015.1	1016.1	1015.5	1013.4	1013.8	1015.3
Shawbury	52° 48'N	02° 41'W	1013.8	1015.3	1015.3	1015.8	1016.5	1016.5	1014.7	1014.9	1015.6	1015.1	1013.0	1013.1	1015.0
Watnall	53° 01'N	01° 15'W	1013.7	1015.0	1015.4	1015.7	1016.4	1016.2	1014.3	1014.5	1015.7	1015.0	1013.0	1013.3	1014.9
Wittering	52° 37'N	00° 27'W	1014.0	1015.2	1015.6	1015.7	1016.6	1016.5	1014.7	1014.8	1015.8	1015.2	1013.1	1013.4	1015.1
<u>District 5 England SE</u>															
Boscombe Down	51° 10'N	01° 45'W	1015.2	1016.3	1015.9	1016.4	1016.7	1017.3	1015.9	1015.7	1016.7	1016.2	1014.3	1014.8	1015.9
Groydon	51° 21'N	00° 07'W	1015.2	1015.9	1016.0	1016.2	1016.5	1017.1	1015.7	1015.5	1016.7	1016.1	1014.3	1014.7	1015.8
Eastbourne	50° 46'N	00° 17'E	1015.5	1016.0	1016.1	1016.4	1016.5	1017.4	1016.1	1015.8	1017.0	1016.3	1014.5	1014.9	1016.1
Kew	51° 28'N	00° 19'W	1015.1	1016.0	1015.9	1016.1	1016.5	1017.0	1015.5	1015.4	1016.6	1016.0	1014.1	1014.6	1015.7
Lympe	51° 05'N	01° 01'E	1015.5	1016.2	1016.1	1016.2	1016.5	1017.2	1015.9	1015.7	1016.8	1016.2	1014.5	1014.7	1016.0
Lyneham	51° 30'N	01° 59'W	1014.9	1016.0	1015.8	1016.3	1016.7	1017.3	1015.6	1015.4	1016.5	1015.9	1013.9	1014.4	1015.7

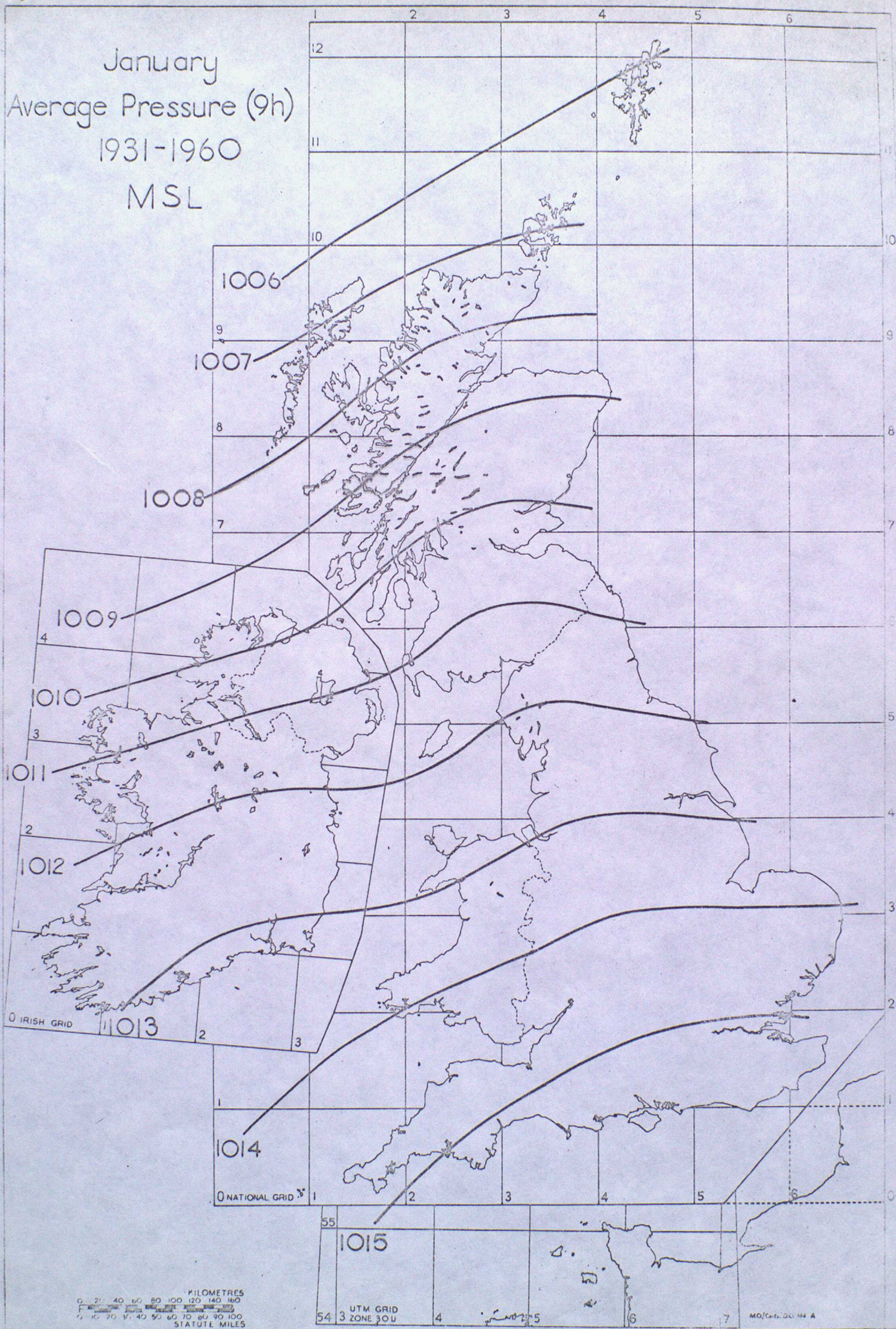
	Lat.	Long.	Jan.	Feb.	Mar.	Apr.	May	Jun.	Jul.	Aug.	Sep.	Oct.	Nov.	Dec.	Year
<u>District 5 England SE (cont.)</u>															
South Farnborough	51 17N	00 45W	1015.2	1016.1	1015.9	1016.3	1016.5	1017.1	1015.7	1015.5	1016.7	1016.1	1014.3	1014.8	1015.9
Thorney Island	50 49N	00 56W	1015.6	1016.3	1016.0	1016.5	1016.5	1017.4	1016.0	1015.7	1016.8	1016.2	1014.4	1015.0	1016.0
Tunbridge Wells	51 08N	00 16E	1015.5	1016.2	1016.0	1016.2	1016.3	1017.0	1015.6	1015.5	1016.8	1016.2	1014.4	1015.1	1015.9
West Malling	51 17N	00 24E	1015.2	1016.1	1016.0	1016.1	1016.4	1017.0	1015.5	1015.4	1016.7	1016.1	1014.3	1014.8	1015.8
<u>District 7a England NW</u>															
Bidston	53 24N	03 04W	1012.8	1014.5	1014.8	1015.3	1016.2	1016.1	1014.1	1014.1	1015.0	1014.3	1012.1	1012.2	1014.3
Manchester	53 29N	02 15W	1013.1	1014.6	1014.9	1015.2	1016.1	1015.8	1014.0	1014.1	1015.1	1014.4	1012.4	1012.7	1014.4
Silloth	54 52N	03 23W	1011.9	1013.4	1014.3	1014.7	1016.0	1015.2	1013.3	1013.4	1013.9	1013.2	1011.2	1010.7	1013.4
Southport	53 40N	02 58W	1012.9	1014.5	1014.8	1015.3	1016.2	1016.0	1014.0	1014.1	1015.0	1014.3	1012.1	1012.2	1014.3
Squires Gate	53 46N	03 02W	1012.7	1014.2	1014.8	1015.2	1016.2	1015.9	1013.9	1013.8	1014.7	1014.1	1011.9	1011.9	1014.1
Stonyhurst	53 51N	02 28W	1012.6	1014.1	1014.5	1015.5	1016.1	1016.0	1014.1	1014.0	1014.9	1014.2	1011.8	1011.7	1014.2
<u>District 7b North Wales</u>															
Hawarden Bridge	53 12N	03 01W	1013.2	1014.9	1015.0	1015.5	1016.3	1016.1	1014.3	1014.3	1015.2	1014.6	1012.5	1012.6	1014.5
Llandudno	53 20N	03 50W	1012.8	1014.6	1014.6	1015.4	1016.1	1016.2	1014.4	1014.3	1015.2	1014.3	1012.2	1011.9	1014.3
Valley	53 15N	04 32W	1012.3	1014.3	1014.0	1015.2	1015.9	1015.9	1014.1	1014.0	1014.7	1014.0	1011.6	1011.7	1014.0
<u>District 8a South Wales</u>															
Aberporth	52 08N	04 34W	1013.7	1015.1	1014.3	1015.6	1015.8	1016.2	1014.8	1014.3	1015.1	1014.7	1012.6	1012.8	1014.6
Pembroke	51 42N	04 57W	1014.1	1015.4	1014.4	1016.0	1016.0	1016.7	1015.3	1014.8	1015.7	1015.1	1012.9	1013.0	1015.0
Rhoose	51 24N	03 21W	1014.9	1016.0	1015.5	1016.3	1016.5	1017.1	1015.6	1015.3	1016.4	1015.9	1013.9	1014.1	1015.6
<u>District 8b England SW</u>															
Chivenor	51 05N	04 09W	1014.5	1016.0	1014.9	1016.2	1016.1	1016.9	1015.7	1015.4	1016.2	1015.6	1013.5	1013.8	1015.3
Exeter	50 44N	03 25W	1015.1	1016.3	1015.5	1016.5	1016.4	1017.2	1016.0	1015.6	1016.5	1016.0	1014.0	1014.6	1015.8
Holton Heath	50 43N	02 05W	1015.4	1016.4	1015.8	1016.5	1016.2	1017.2	1015.9	1015.6	1016.6	1016.2	1014.3	1015.0	1015.9
Lizard	49 57N	05 12W	1014.8	1016.1	1014.5	1016.4	1016.1	1017.5	1016.5	1015.9	1016.5	1015.9	1013.8	1014.3	1015.7
Newquay	50 25N	05 05W	1014.5	1015.9	1014.3	1016.1	1015.9	1017.3	1016.0	1015.3	1016.1	1015.6	1013.5	1014.0	1015.4
Mount Batten	50 21N	04 07W	1015.2	1016.4	1015.1	1016.5	1016.3	1017.5	1016.4	1015.9	1016.7	1016.0	1014.0	1014.7	1015.9
Scoily	49 56N	06 18W	1014.3	1015.8	1013.9	1016.3	1016.1	1017.4	1016.5	1015.8	1016.3	1015.7	1013.4	1014.0	1015.5
<u>Northern Ireland</u>															
Aldergrove	54 39N	06 13W	1011.1	1013.6	1013.6	1014.6	1015.9	1015.2	1013.3	1013.3	1013.8	1013.1	1010.8	1010.3	1013.2
Armagh	54 21N	06 39W	1011.3	1013.7	1013.4	1014.5	1015.6	1015.2	1013.2	1013.3	1013.8	1013.2	1010.8	1010.4	1013.2
Ballykelly	55 04N	07 01W	1010.0	1012.9	1012.9	1014.1	1015.4	1014.7	1012.7	1012.7	1013.0	1012.2	1010.0	1009.2	1012.5

	Lat.	Long.	Jan.	Feb.	Mar.	Apr.	May	Jun.	Jul.	Aug.	Sep.	Oct.	Nov.	Dec.	Year
<u>Irish Republic</u>															
Belmullet	54° 14'N	10° 00'W	1010.3	1013.1	1012.1	1014.4	1015.1	1015.1	1013.7	1013.3	1013.5	1012.5	1010.2	1009.5	1012.7
Birr	53° 05'N	07° 53'W	1012.0	1014.4	1013.2	1015.2	1015.5	1015.8	1014.2	1014.0	1014.5	1013.9	1011.6	1011.3	1013.8
Claremorris	53° 43'N	08° 59'W	1011.4	1014.1	1013.1	1015.2	1015.7	1015.7	1014.0	1013.8	1014.3	1013.8	1011.1	1010.6	1013.5
Clones	54° 11'N	07° 14'W	1011.4	1013.9	1013.6	1014.9	1015.9	1015.4	1013.6	1013.8	1014.1	1013.5	1011.2	1010.8	1013.5
Dublin	53° 26'N	06° 15'W	1012.2	1014.2	1013.7	1015.1	1015.9	1015.7	1013.9	1013.9	1014.5	1013.9	1011.7	1011.5	1013.9
Malin Head	55° 22'N	07° 20'W	1009.3	1012.3	1012.4	1013.5	1015.3	1014.5	1012.5	1012.5	1012.6	1011.6	1009.3	1008.4	1012.0
Mullingar	53° 31'N	07° 21'W	1012.3	1010.3	1013.5	1015.1	1015.8	1015.8	1013.9	1013.8	1014.4	1014.0	1011.7	1011.6	1013.9
Roche's Point	51° 48'N	08° 15'W	1013.1	1015.2	1013.6	1015.9	1015.8	1016.6	1015.3	1014.8	1015.3	1014.9	1012.4	1012.6	1014.6
Shannon	52° 41'N	08° 55'W	1012.5	1014.9	1013.5	1015.6	1015.6	1016.3	1014.9	1014.3	1014.9	1014.2	1011.7	1011.7	1014.2
Valentia	51° 56'N	10° 15'W	1012.6	1014.9	1012.9	1015.8	1015.6	1016.6	1015.6	1014.9	1015.2	1014.5	1012.1	1012.1	1014.4

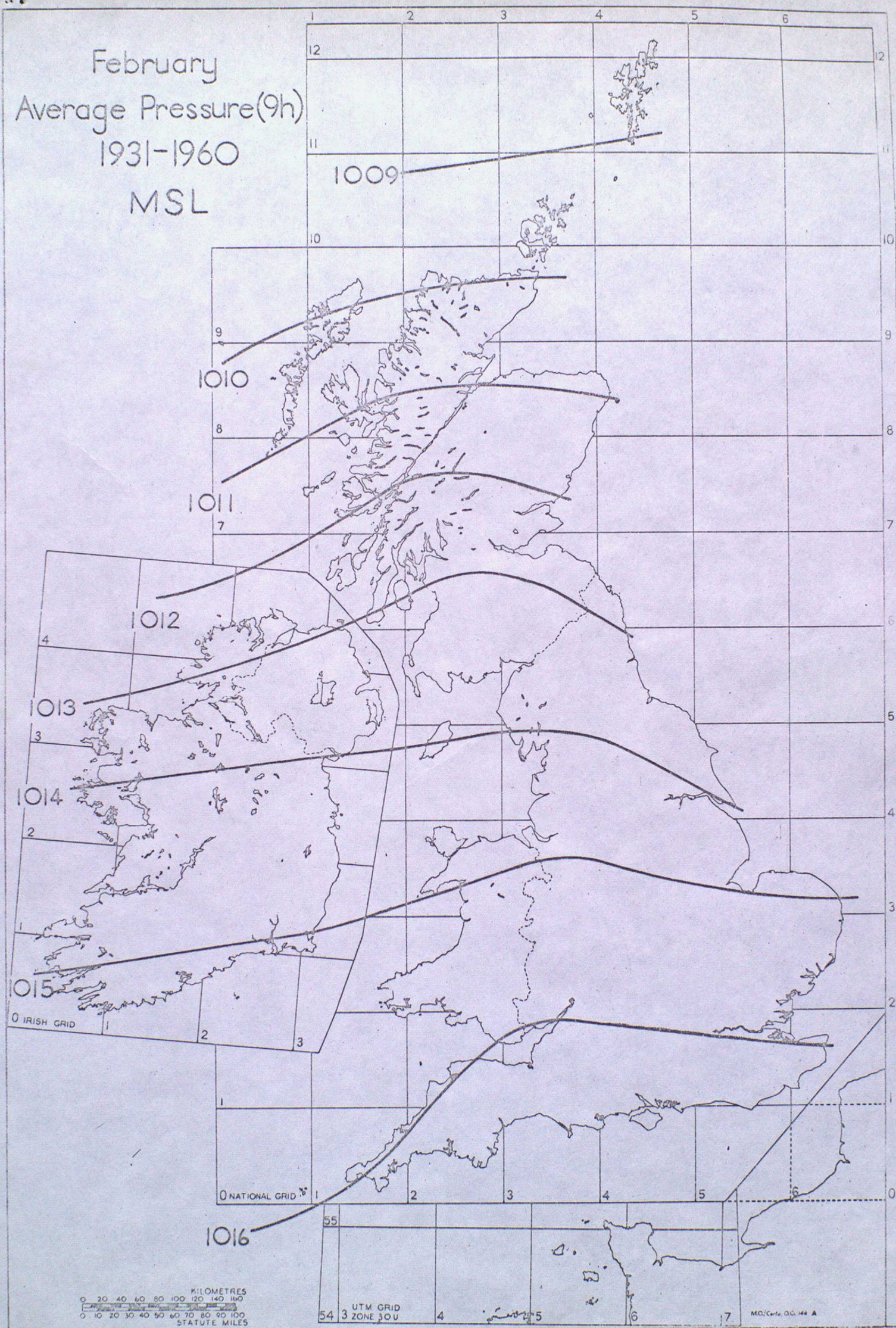
Monthly Maps of Mean Sea Level  
Barometric Pressure Distribution  
at 0900 GMT

1931 - 1960

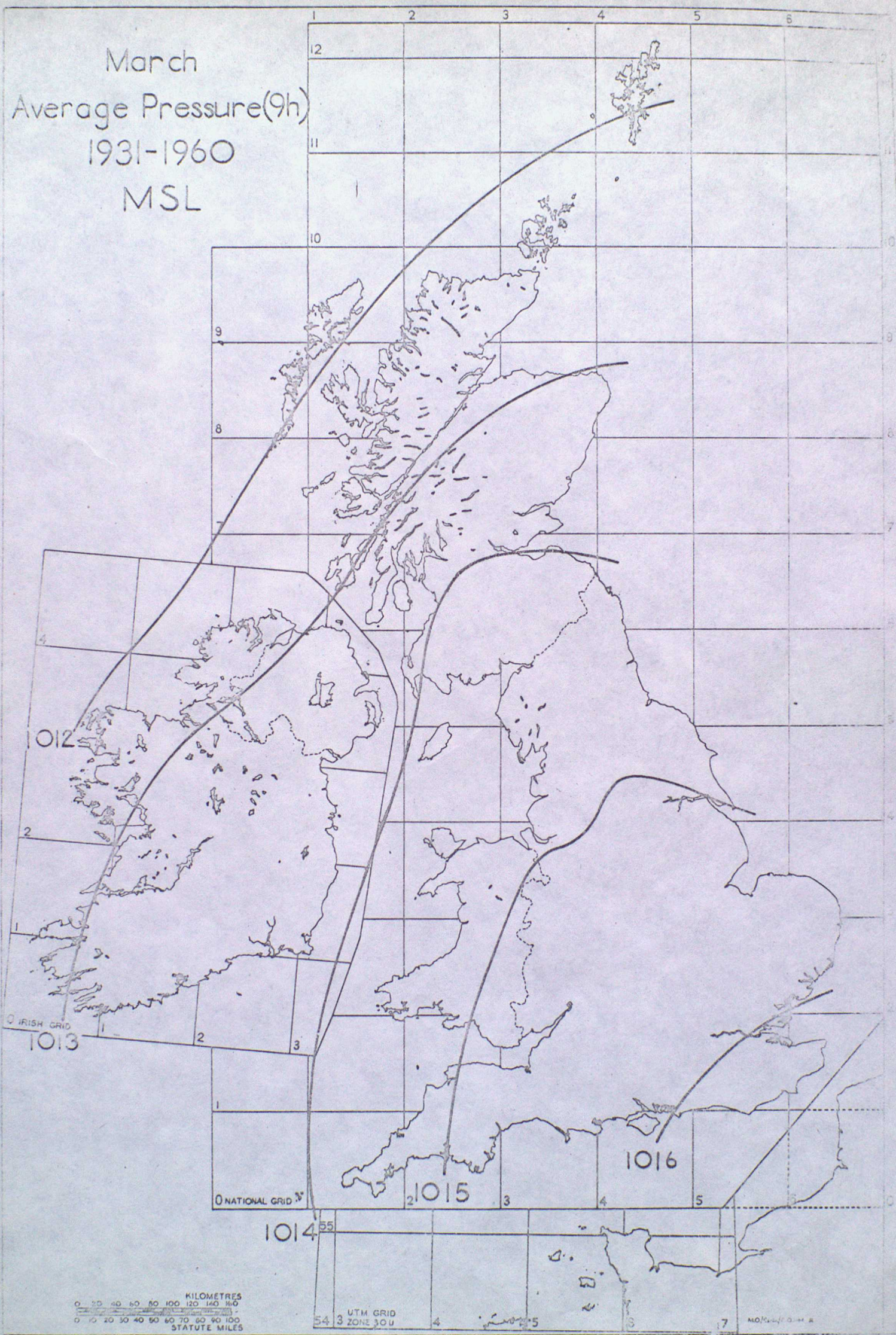
January  
Average Pressure (9h)  
1931-1960  
MSL



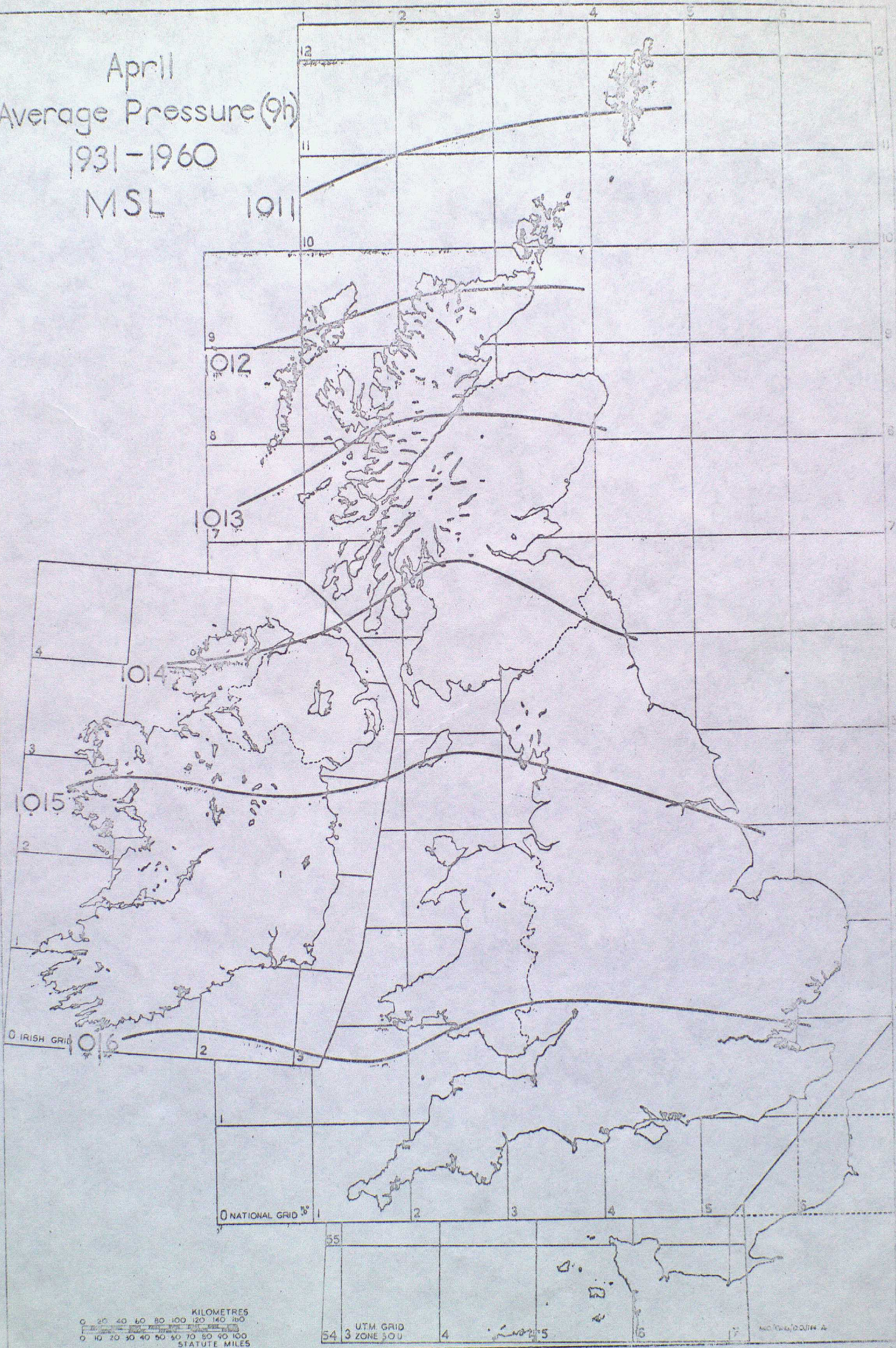
February  
Average Pressure(9h)  
1931-1960  
MSL



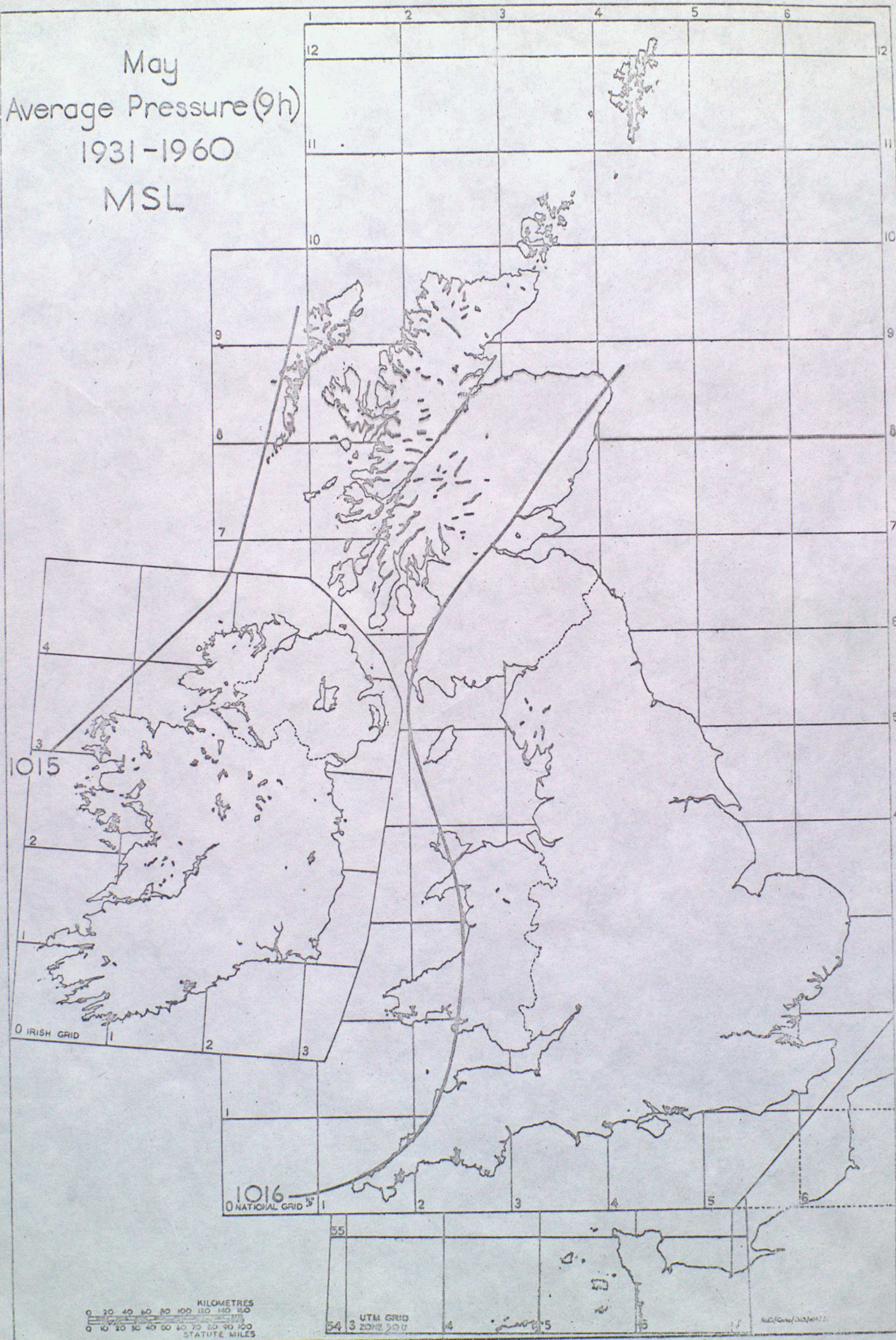
March  
Average Pressure(9h)  
1931-1960  
MSL



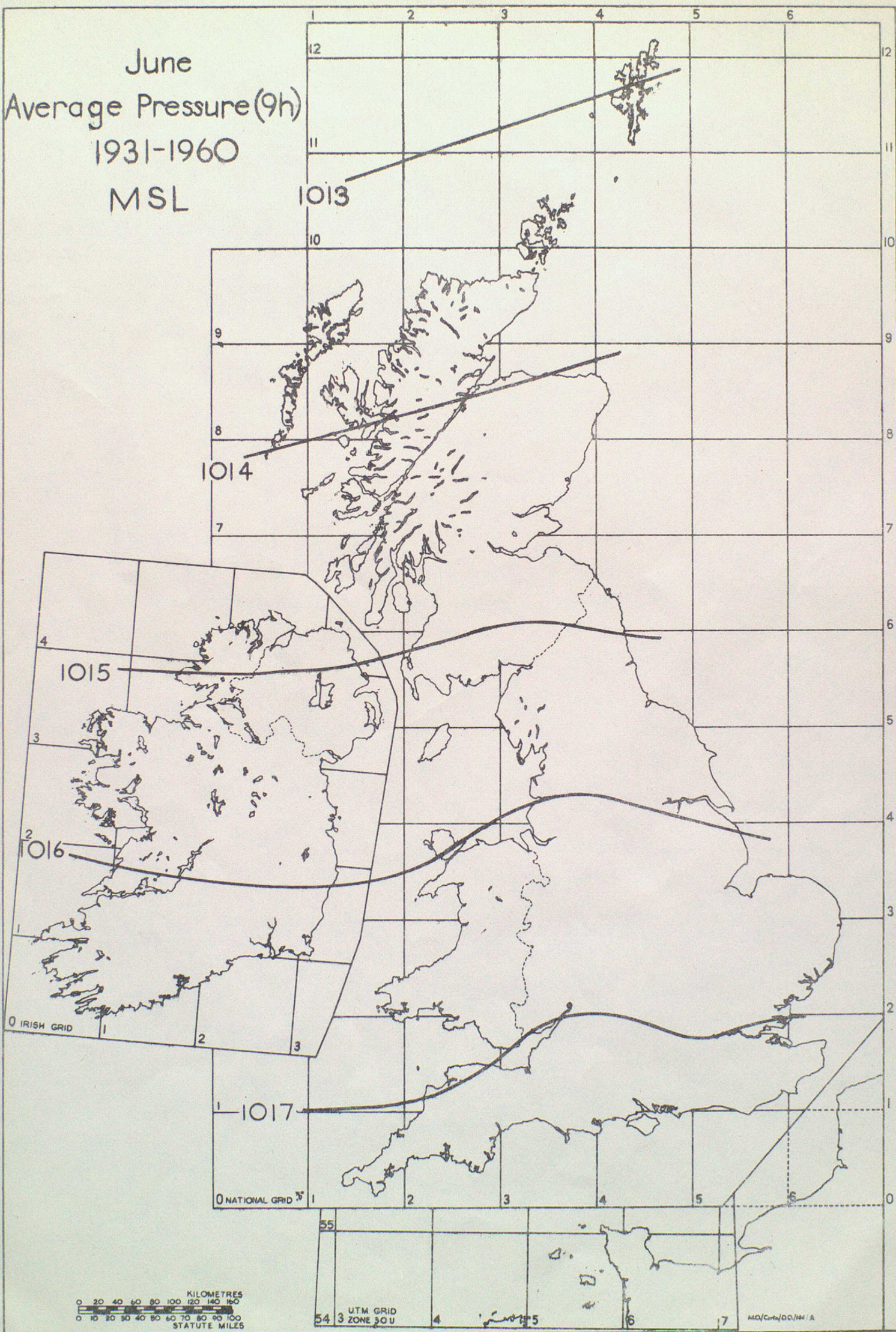
April  
Average Pressure (9h)  
1931-1960  
MSL



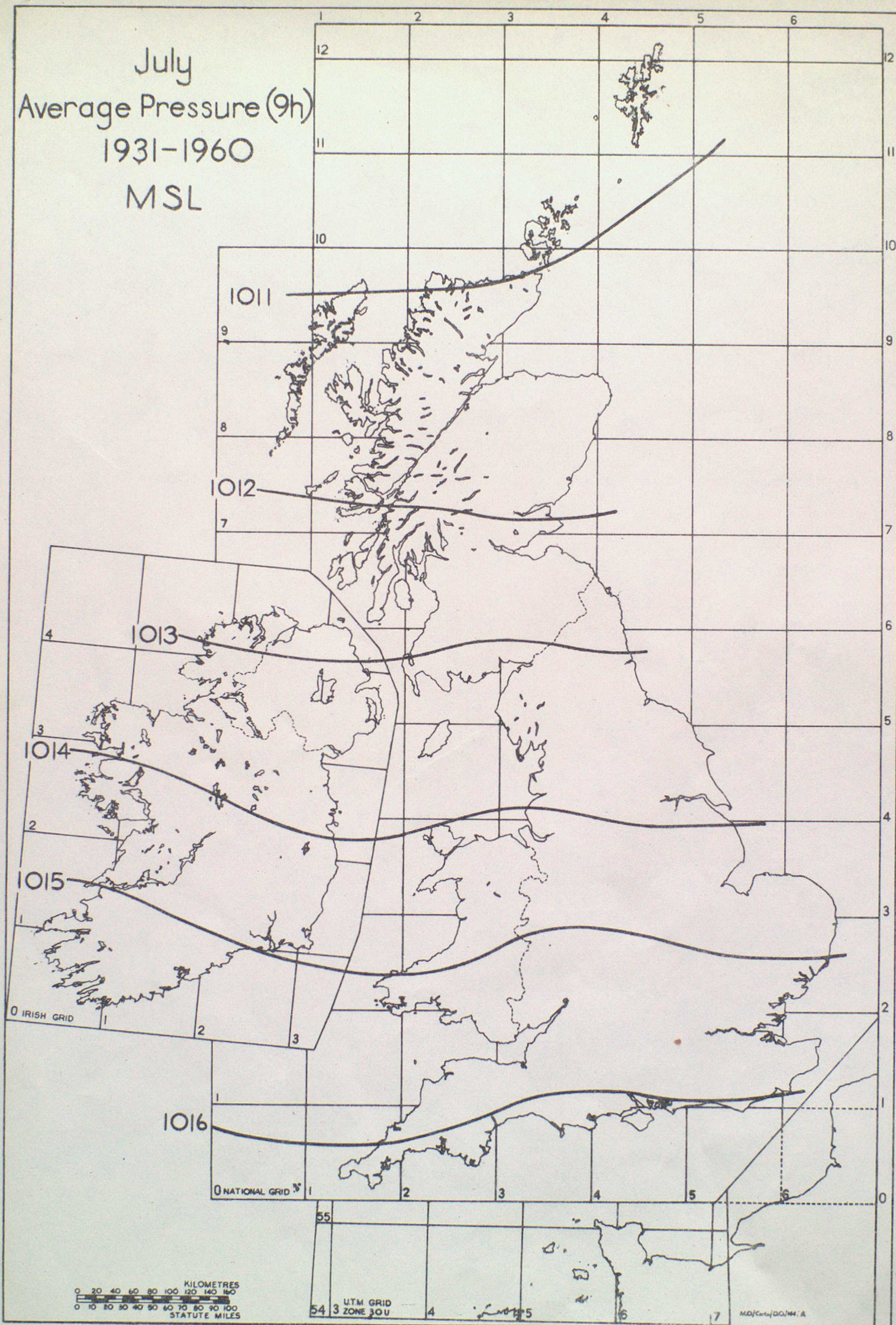
May  
Average Pressure (9h)  
1931-1960  
MSL



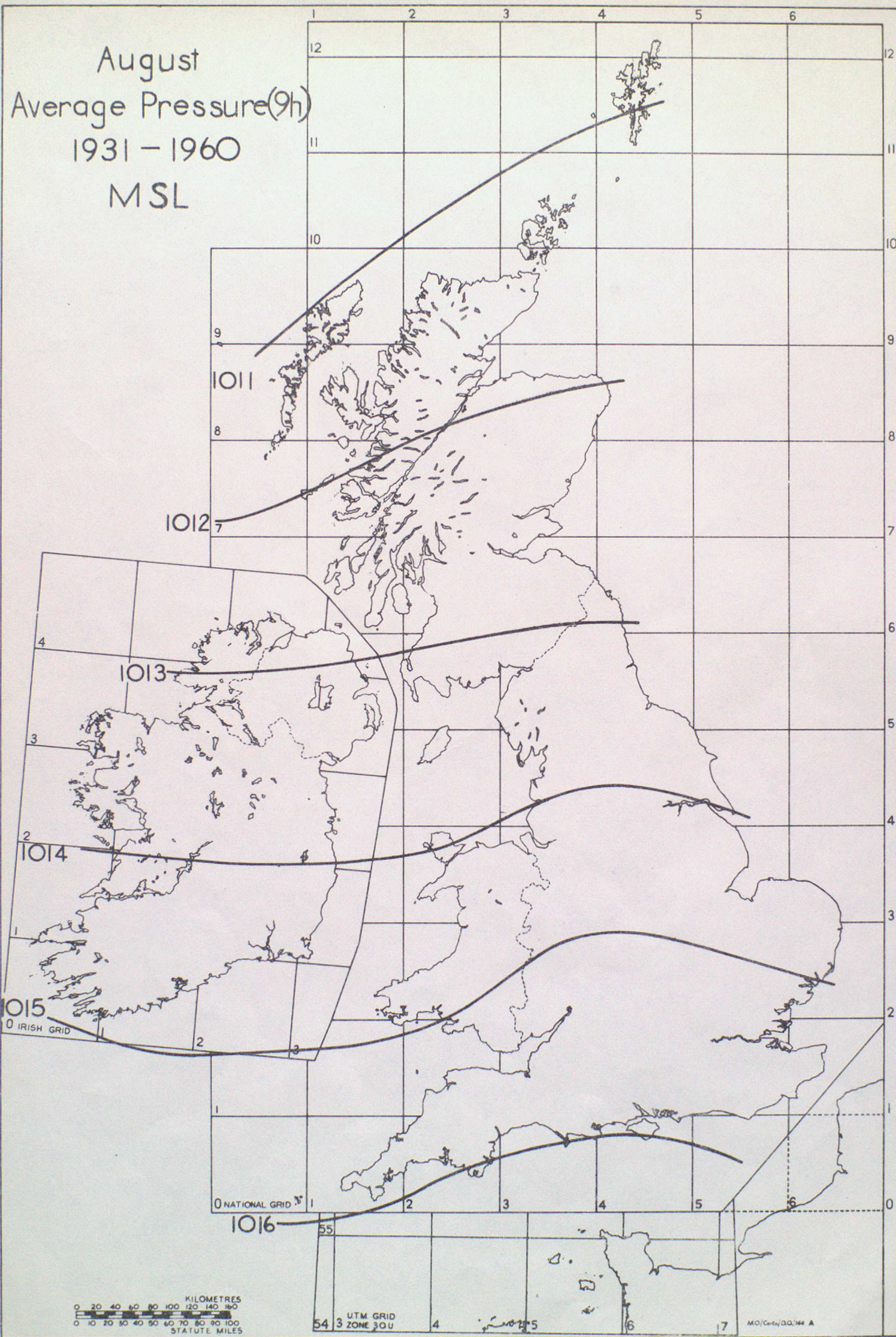
June  
Average Pressure(9h)  
1931-1960  
MSL



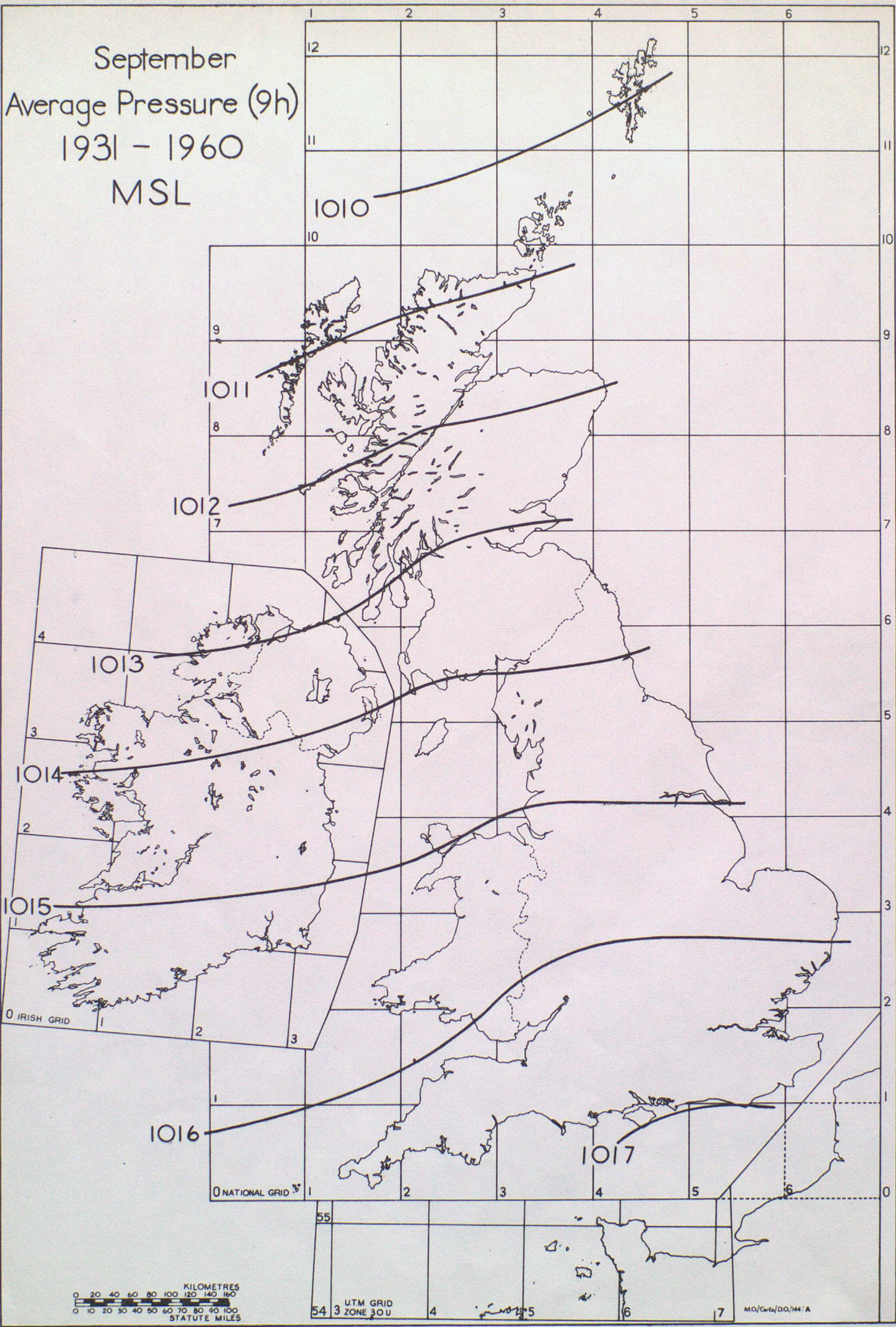
July  
Average Pressure (9h)  
1931-1960  
MSL



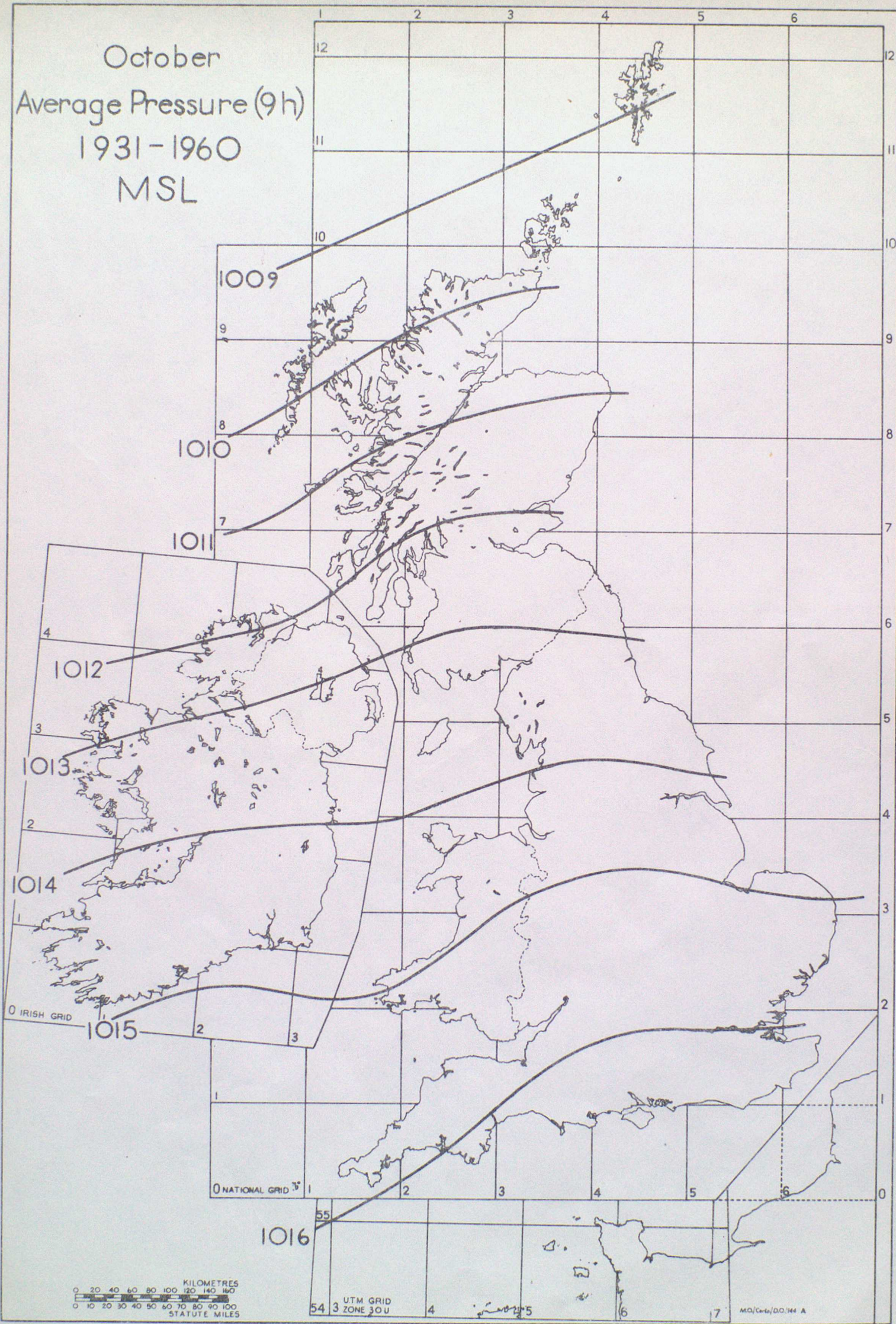
August  
Average Pressure(9h)  
1931 - 1960  
MSL



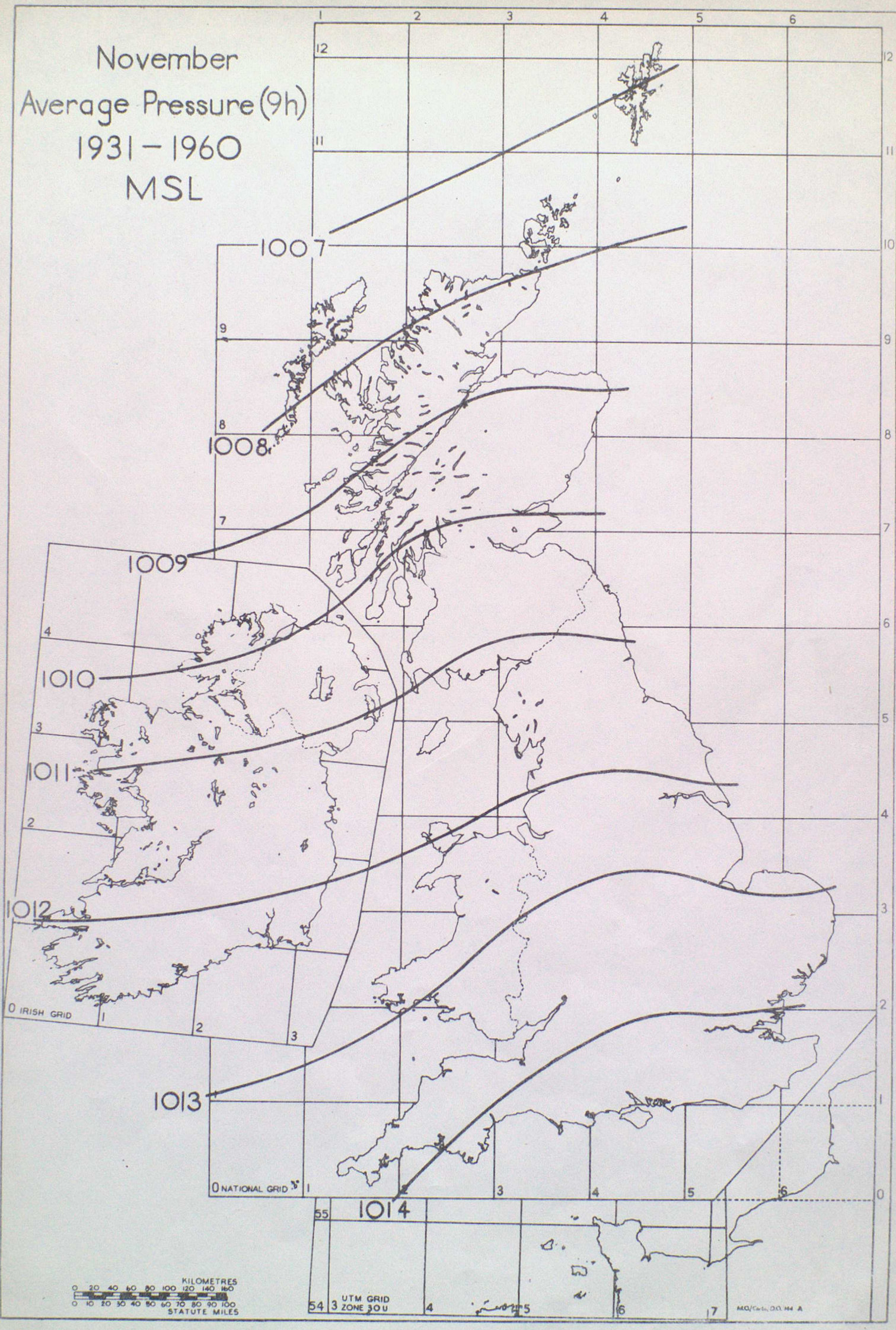
September  
Average Pressure (9h)  
1931 - 1960  
MSL



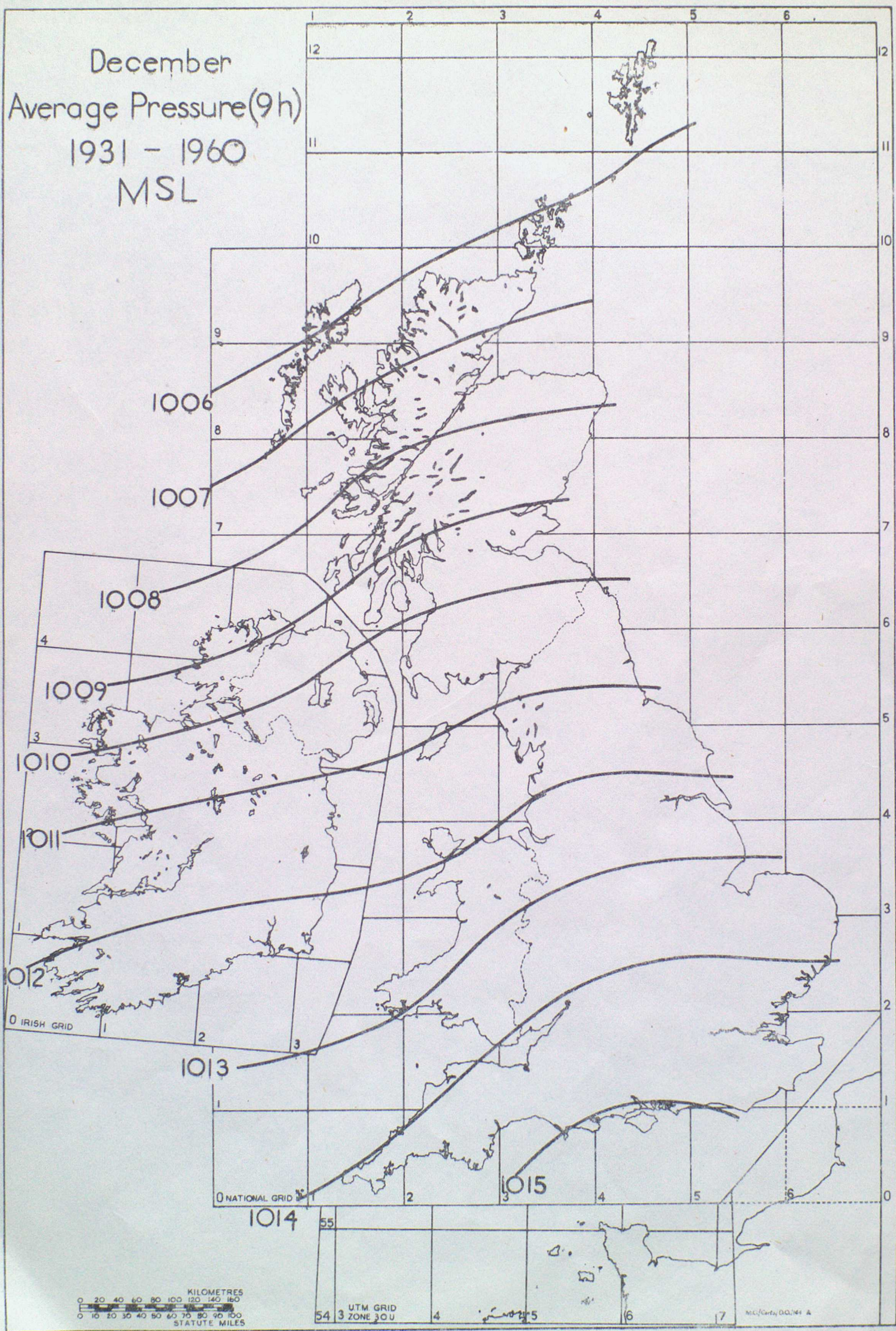
October  
Average Pressure (9h)  
1931-1960  
MSL



# November Average Pressure (9h) 1931-1960 MSL



# December Average Pressure(9h) 1931 - 1960 MSL



Annual  
Average Pressure(9h)  
1931-1960  
MSL

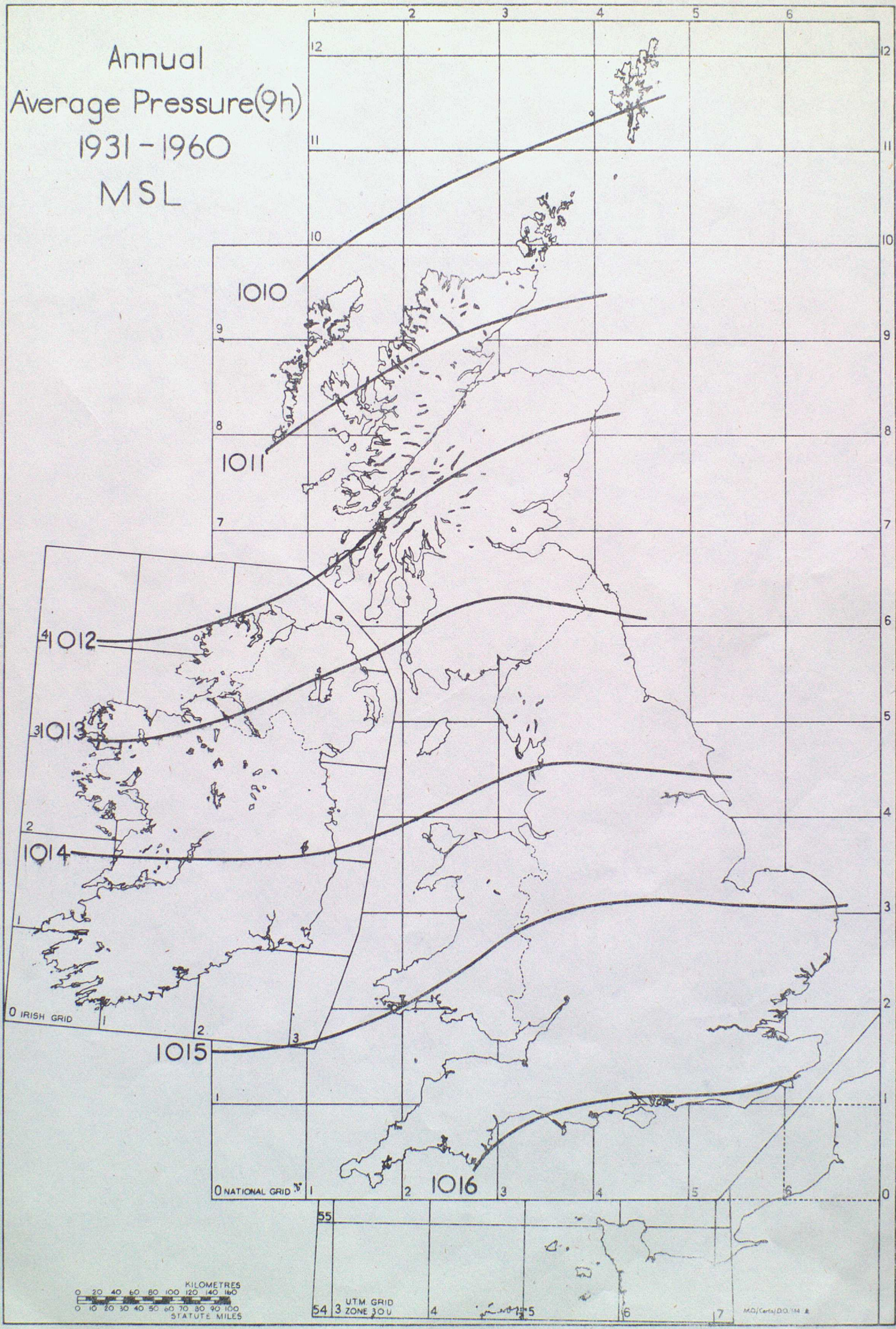


TABLE II

HIGHEST AND LOWEST MEAN SEA LEVEL PRESSURES (IN MILLIBARS AND INCHES) RECORDED IN  
THE BRITISH ISLES FROM 1870 TO 1965

	Jan	Feb	Mar	Apr	May	June	July	Aug	Sep	Oct	Nov	Dec
<u>Highest</u> Pressure	1054.7 mb 31.15 in	1051.1 mb 31.04 in	1047.1 mb 30.92 in	1044.5 mb 30.84 in	1042.2 mb 30.78 in	1043.1 mb 30.80 in	1038.3 mb 30.65 in	1036.7 mb 30.61 in	1038.6 mb 30.67 in	1045.6 mb 30.83 in	1044.5 mb 30.84 in	1051.9 mb 31.06 in
Place	Aberdeen	Aberdeen Nairn Stumburgh	Valentia	Eskdalemuir	Dublin	Clones	North Shields	Pembroke	Oxford Kew	Dyce	Benbecula	Wick
Date	1902	1902	1900	1938	1943	1959	1911	1949	1906	1956	1956	1926
<u>Lowest</u> Pressure	925.5 mb 27.33 in	942.3 mb 27.83 in	946.2 mb 27.94 in	952.9 mb 28.14 in	968.0 mb 28.58 in	976.8 mb 28.84 in	967.9 mb 28.58 in	967.0 mb 28.56 in	957.1 mb 28.26 in	946.8 mb 27.96 in	939.7 mb 27.75 in	927.2 mb 27.38 in
Place	Ochtertyre	Cork	Wick	Malin Head	Sealand	Wick	Sule Skerry	Cape Wrath	Claremorris	Cawdor Castle	Monach Lighthouse	Belfast
Date	1884	1951	1876	1948	1943	1944	1964	1957	1953	1891	1877	1886
Range in millibars	129.2	108.8	100.9	91.6	74.2	66.3	70.4	69.7	81.5	98.8	104.8	124.7

Conversion Table for Pressure in Millibars to Inches  
of Mercury at 0°C and Standard Gravity

1 mb = .0295306 in.      1 in. = 33.8632 mb.

mb.	0	1	2	3	4	5	6	7	8	9
950	28.05	28.08	28.11	28.14	28.17	28.20	28.23	28.26	28.29	28.32
960	28.35	28.38	28.41	28.44	28.47	28.50	28.53	28.56	28.59	28.62
970	28.64	28.67	28.70	28.73	28.76	28.79	28.82	28.85	28.88	28.91
980	28.94	28.97	29.00	29.03	29.06	29.09	29.12	29.15	29.18	29.21
990	29.24	29.26	29.29	29.32	29.35	29.83	29.41	29.44	29.47	29.50
1000	29.53	29.56	29.59	29.62	29.65	29.68	29.71	29.74	29.77	29.80
1010	29.83	29.86	29.88	29.91	29.94	29.97	30.00	30.03	30.06	30.09
1020	30.12	30.15	30.18	30.21	30.24	30.27	30.30	30.33	30.36	30.39
1030	30.42	30.45	30.48	30.51	30.53	30.56	30.59	30.62	30.65	30.68
1040	30.71	30.74	30.77	30.80	30.83	30.86	30.89	30.92	30.95	30.98
1050	31.01	31.04	31.07	31.10	31.13	31.15	31.18	31.21	31.24	31.27