

The forecast presented here is for November and the average of the November-December-January period for the United Kingdom as a whole.

This forecast is based on information from observations, several numerical models and expert judgement.

SUMMARY - PRECIPITATION:

Predictions for UK-mean precipitation for both November and the November-December-January period are similar to climatology and show a slight preference for near-normal values.

The probability that UK mean precipitation for November-December-January will fall into the driest of our five categories is about 15% and the probability that it will fall into the wettest category is about 20% (the climatological probability for each of these categories is 20%).

CONTEXT:

Predictability of UK precipitation on seasonal timescales is generally low. Furthermore, large scale influences are currently weak and models are in disagreement about the distribution of precipitation across Europe over the next three months, leading to a very broad range of predicted outcomes (see Figure P2) and therefore low confidence in the forecast.

Although the resulting probability for the driest of the five categories is lower than the climatological probability of 20%, the range is more evenly divided between wet and dry when considering wider categories (for example probabilities are fairly equally split between wetter and drier than average).

Fig P1

3-month UK outlook for precipitation in the context of the observed annual cycle

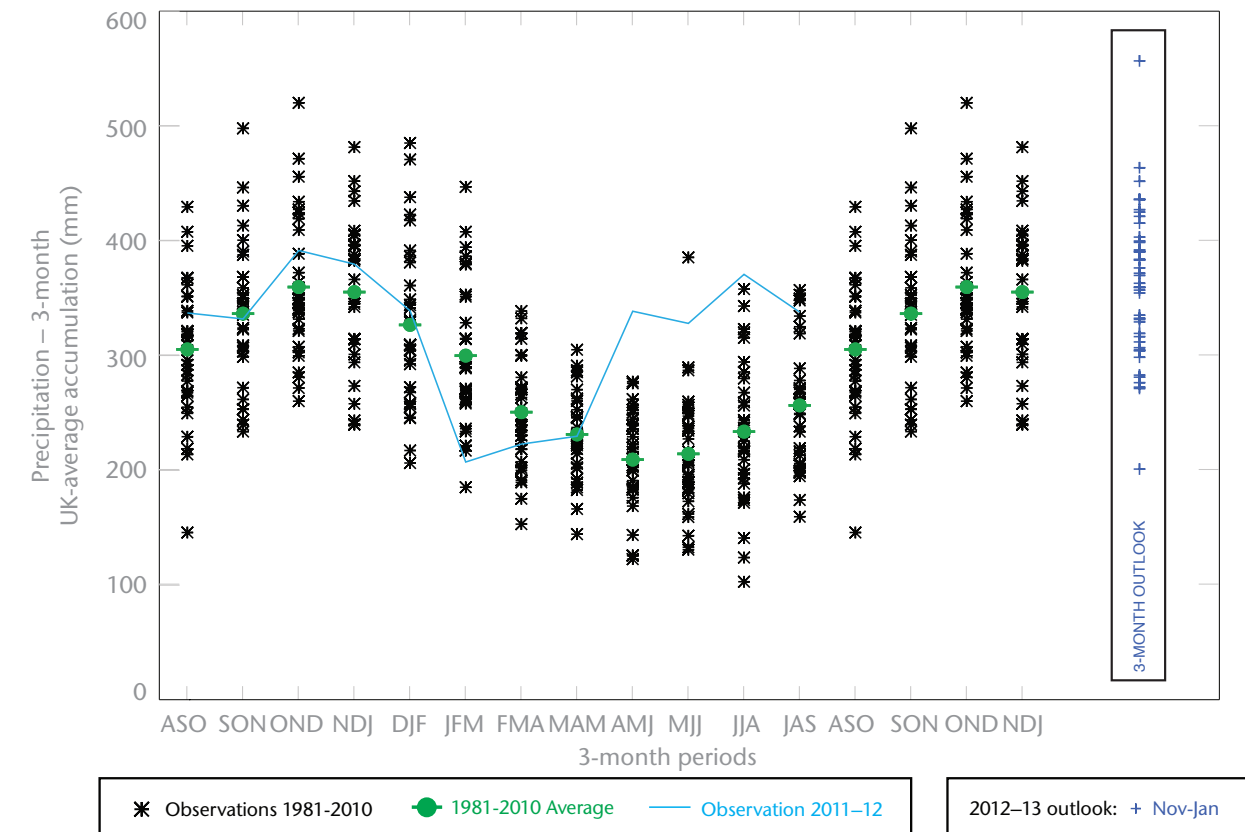


Fig P2

1-month and 3-month UK outlook for precipitation in the context of observed climatology

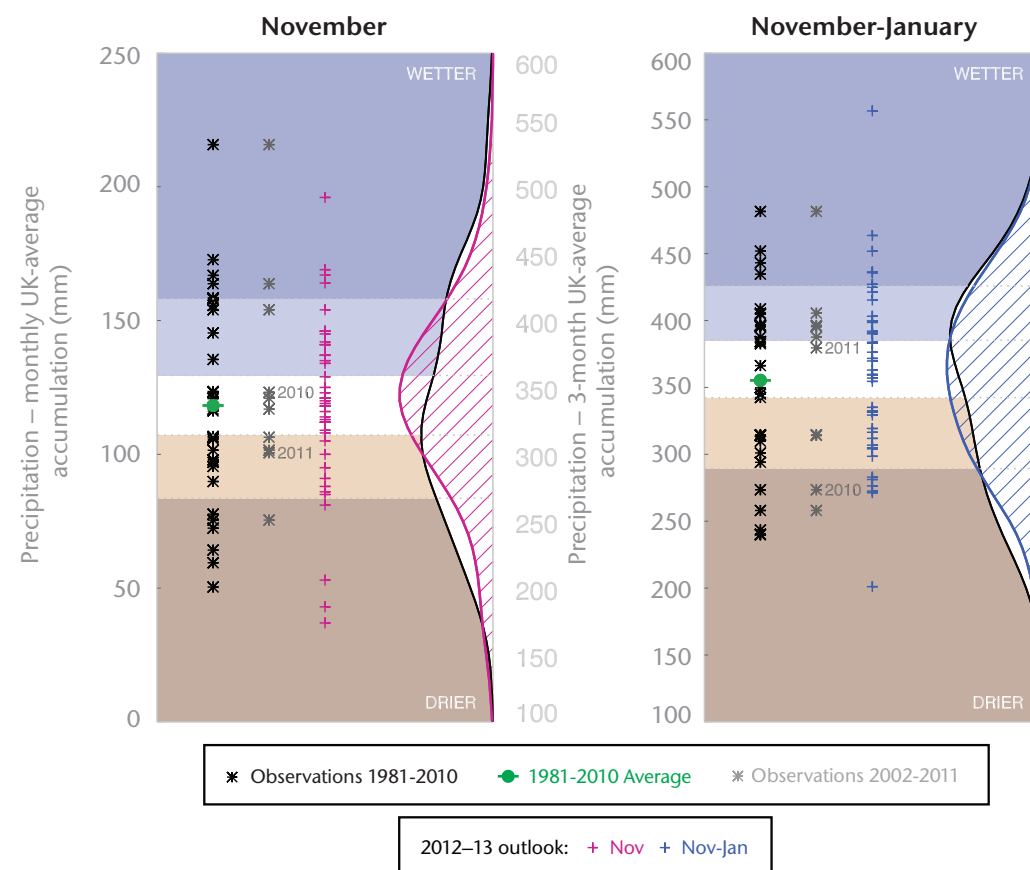
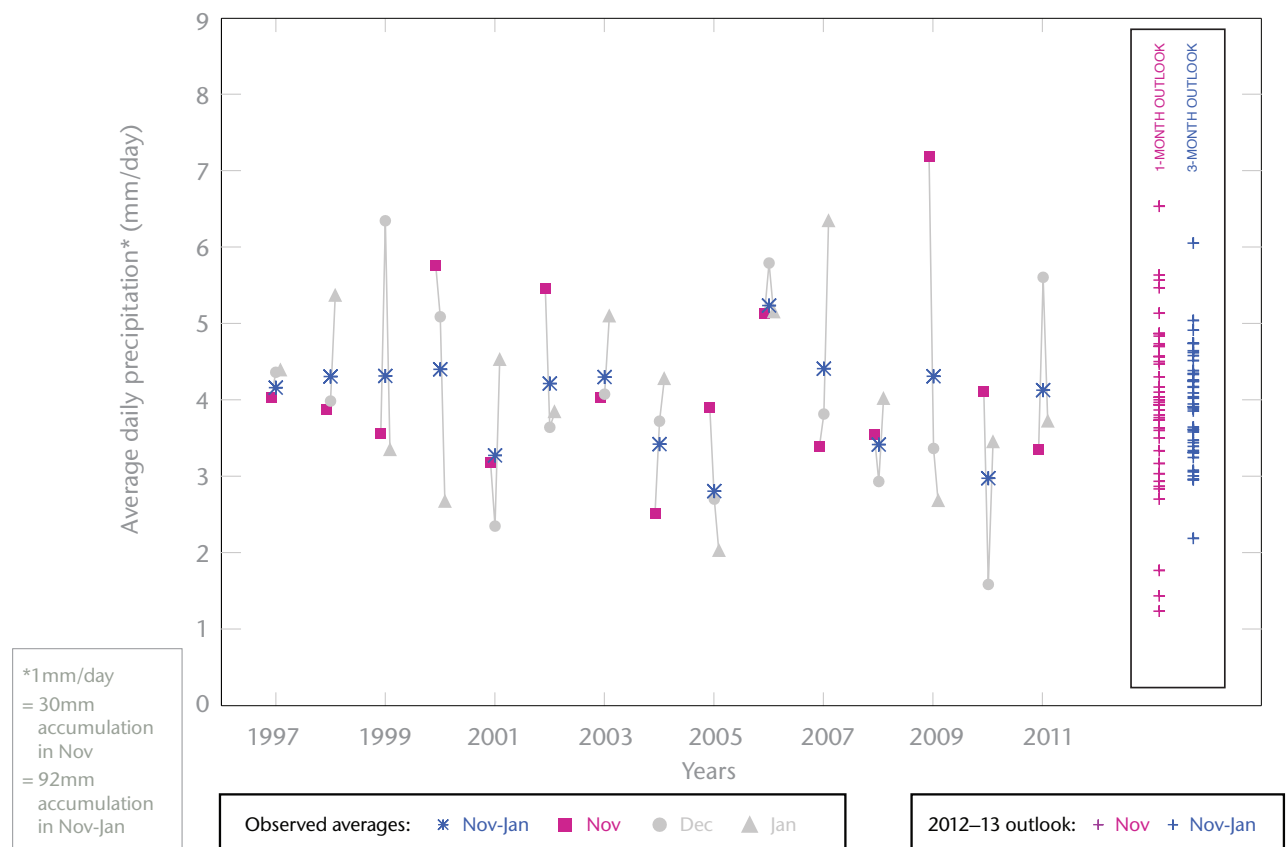


Fig P3

1-month and 3-month UK outlook for precipitation in the context of recent climatology: year-to-year and within-season variability



This Outlook provides an indication of possible temperature and rainfall conditions over the next 3 months. It is part of a suite of forecasts designed for contingency planners. The Outlook should not be used in isolation but should be used with shorter-range and more detailed (30-day, 15-day and 1-to-5-day) forecasts and warnings available to the contingency planning community from the Met Office.