

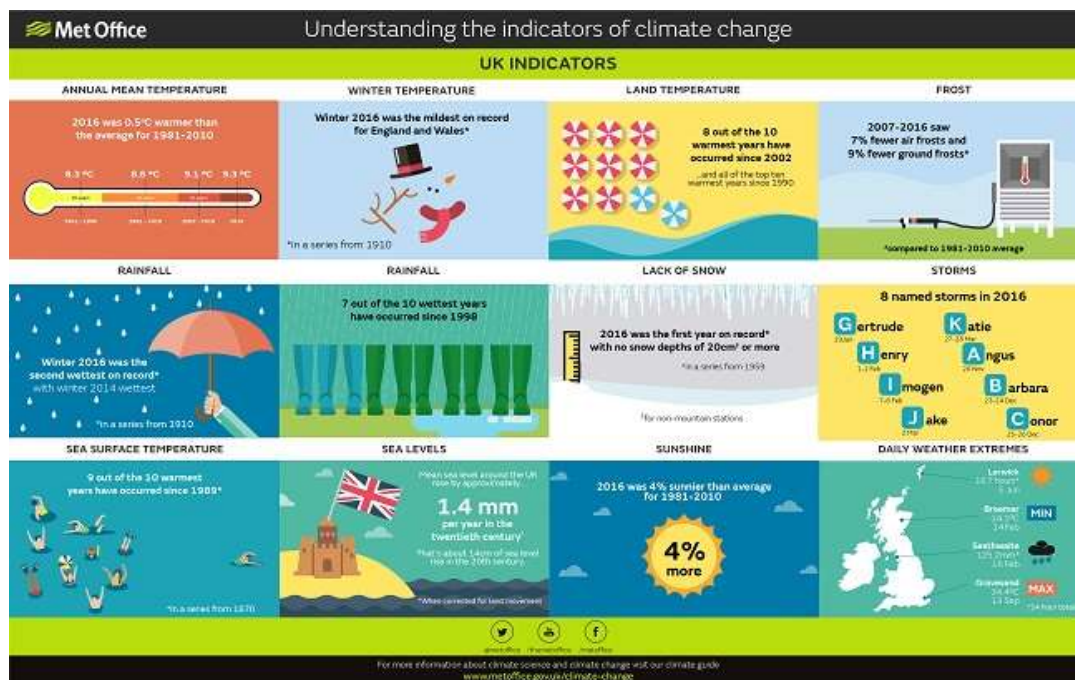
State of the UK Climate 2016

Author: Press Office

11:00 (UTC+1) on Thu 27 Jul 2017

Met Office State of the UK Climate report shows 2016 the 13th warmest year.

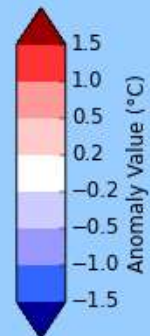
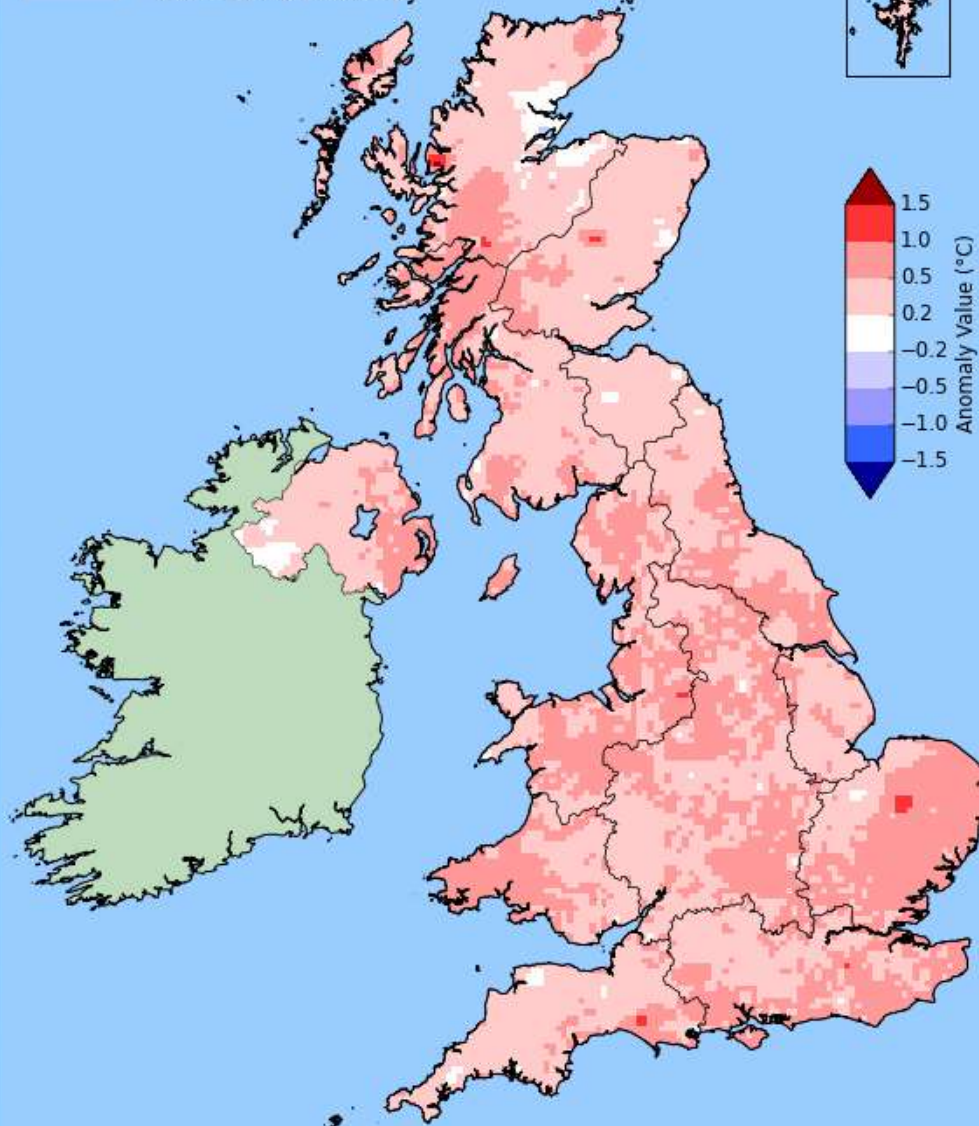
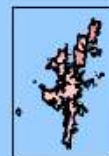
2016 has been 0.5 °C warmer than average and the last decade 0.3 °C warmer (1981-2010) over the UK as a whole and for many it was also sunny with sunshine levels 4% above the 30 year average (1981-2010) for the UK overall.

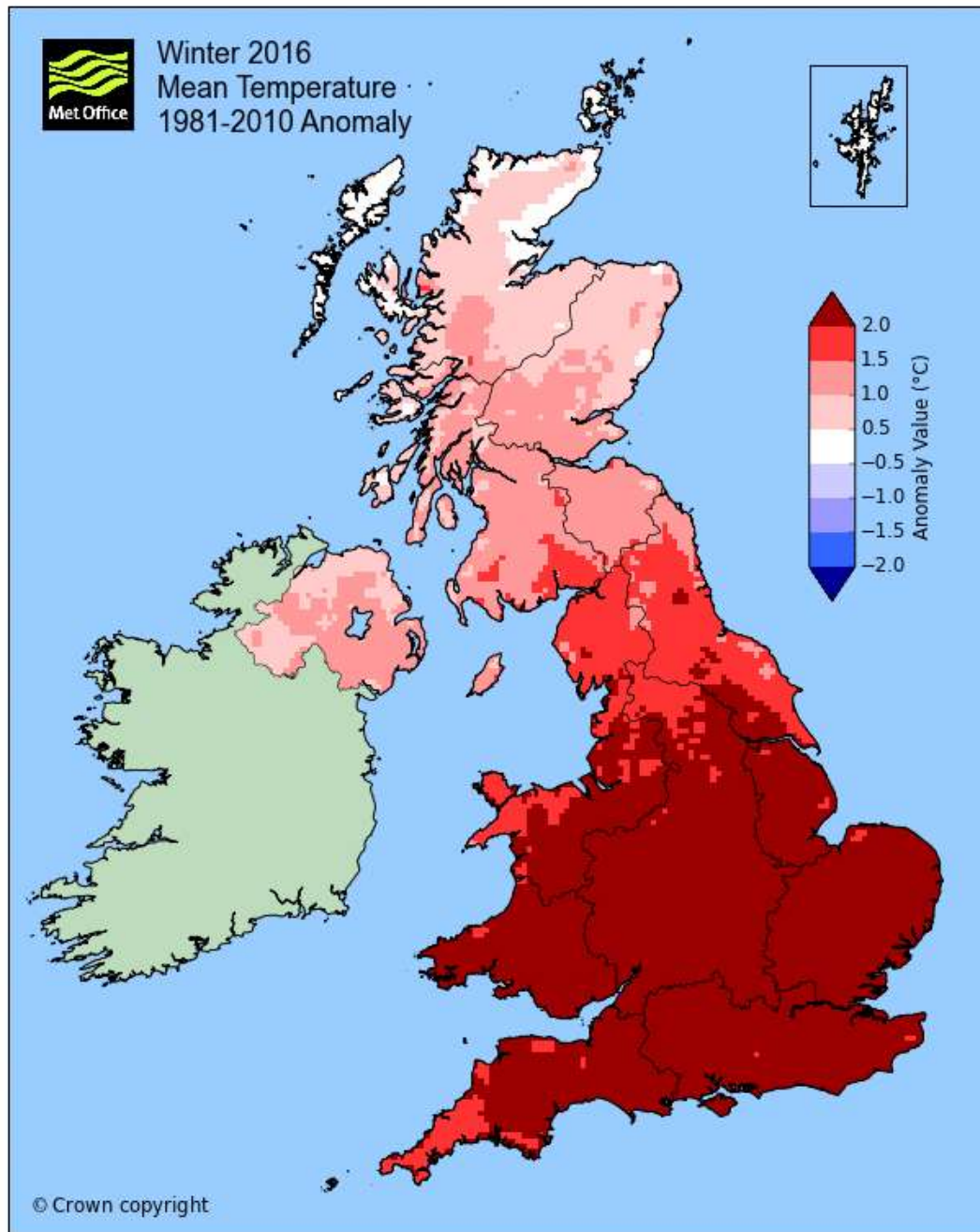


Mark McCarthy, Head of the Met Office's National Climate Information Centre, said: "Although 2016 may not be regarded as remarkable for temperature, it does feature within a notable decade for temperature records. The trend towards warmer temperatures is clear, but of course natural variation in our climate will always mean that increases are not always even year on year."



Year 2016
Mean Temperature
1981-2010 Anomaly





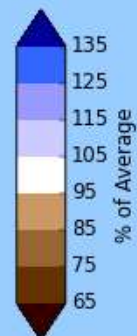
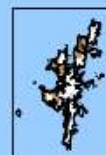
Winter 2016 (December 2015 to February 2016) was the mildest winter on record for England and Wales in records dating back to 1910, with the winter mean temperature more than 2 °C above the long-term average across the southern half of the UK. Over the last decade there have been seven per cent fewer air frosts and nine per cent fewer ground frosts, compared with the long-term average (1981-2010).

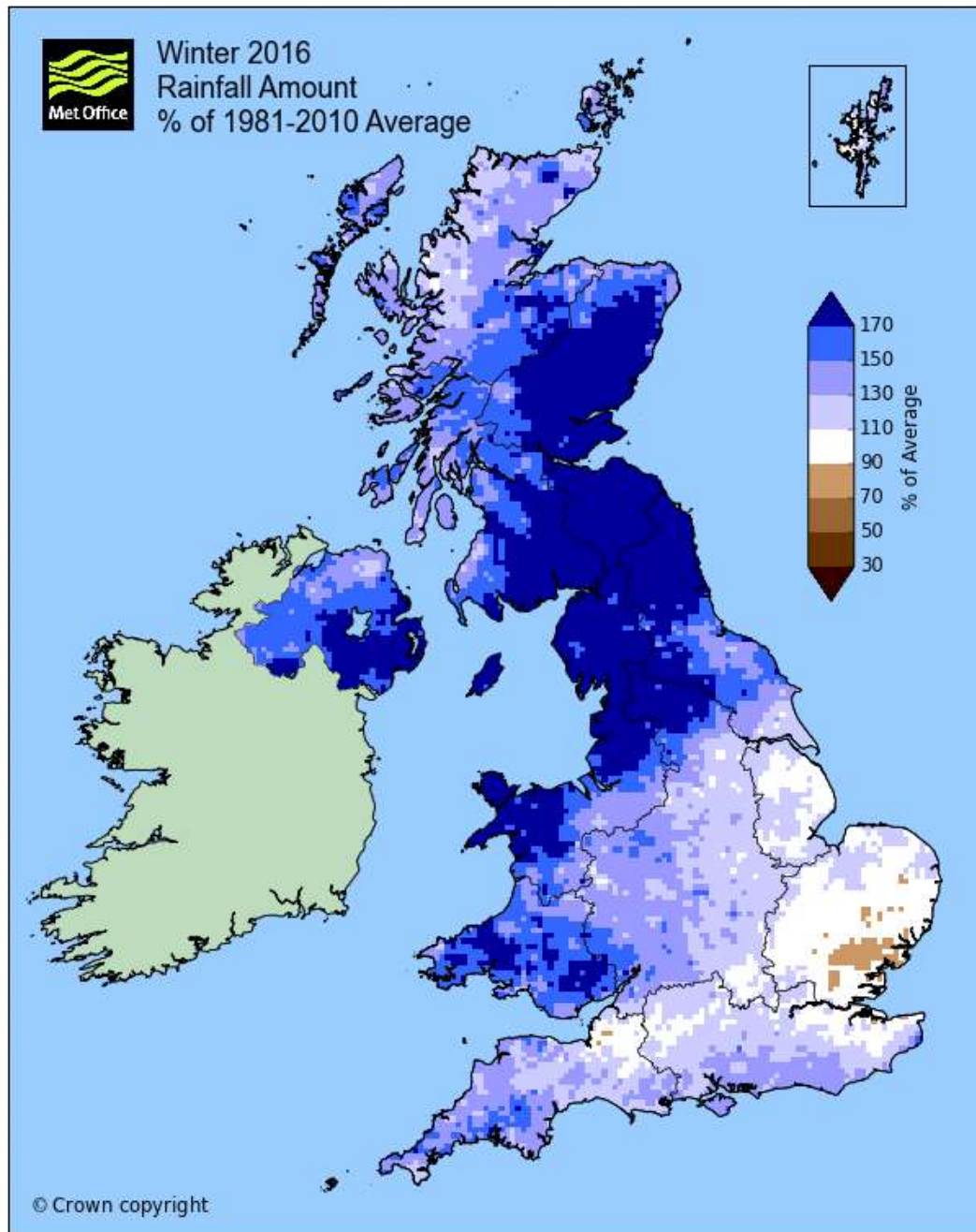
As far as UK precipitation is concerned the report shows that 2016 as a whole had 95% of expected rainfall. Winter 2016 was the second-wettest winter on record for the UK in records dating back to 1910, with winter 2014 wettest. In contrast, the second half of the year was notably dry, particularly in the south.

Although we saw some snow during 2016 it was not a particularly snowy year for the UK overall and it was the first year on record from 1959 where there was no observed snow depths of 20 cm or more.



Year 2016
Rainfall Amount
% of 1981-2010 Average





Figures show that in the past few decades there has been an increase in annual average rainfall over the UK, particularly over Scotland with the last decade 11% wetter than 1961–1990 average and 4% wetter than 1981–2010 average

Extremes for 2016

Extremes (09 - 09GMT)	Observation	Date	Station
Highest daily maximum temperature	34.4 °C	13 Sept	Gravesend, Kent
Lowest daily minimum temperature	-14.1 °C	14 Feb	Braemar, Aberdeenshire
Highest daily rainfall	125.2 mm	16 Feb	Seathwaite, Cumbria
Greatest snow depth (09 GMT)	19 cm	10 Jan	Leadhills, South Lanarkshire
Highest daily sunshine	16.7 hrs	5 Jun	Lerwick, Shetland
Highest gust speed	106mph	28 Mar	Needles Old Battery, Isle of Wight
Highest gust speed - mountain	148mph	1 Feb & 25 Dec	Cairngorm Summit, Inverness-shire

This report provides a summary of the UK weather and climate through the calendar year 2016 and is the third annual ‘State of the UK climate’ produced by the Met Office. It provides an accessible, authoritative and up-to-date assessment of UK climate trends, variations and extremes based on the latest available climate quality observational datasets.

You can find out the current forecast in your area using our [forecast](#) pages and by following us on [Twitter](#) and [Facebook](#), as well as using our [mobile app](#) which is available for iPhone from the [App store](#) and for Android from the [Google Play store](#).

Correction

A correction was made at 12:30 27/07/17 removing a reference to the Central England Temperature record showing 2007-2016 was the warmest decade in over three centuries as it is not correct.