



Met Office

# Met Office 3-month Outlook

Period: August – October 2020 Issue date: 23.07.20

The forecast presented here is for August and the average of the August-September-October period for the United Kingdom as a whole. The forecast for August will be superseded by the long-range information on the public weather forecast web page ([www.metoffice.gov.uk/public/weather/forecast/#?tab=regionalForecast](http://www.metoffice.gov.uk/public/weather/forecast/#?tab=regionalForecast)), starting from 3<sup>rd</sup> August 2020.

This forecast is based on information from observations, several numerical prediction systems and expert judgement.

## SUMMARY – PRECIPITATION:

For August and August-September-October as a whole, above-average precipitation is slightly more likely than below-average precipitation.

The probability that UK-average precipitation for August-September-October will fall into the driest of our five categories is around 20% and the probability that it will fall into the wettest of our five categories is between 20% and 25% (the 1981-2010 probability for each of these categories is 20%).

## CONTEXT:

As stated in the temperature Outlook, there is a relative lack of global drivers of UK weather patterns at this time of year, which causes predictability of precipitation amounts to be lower. This means there are typically only small shifts in the likelihood of above- and below-average precipitation.

It is therefore unsurprising that signals from the long-range models for August are weak and there is some disagreement between systems. Overall, however, there is a signal for lower-than-normal pressure near the UK and an increased likelihood of wetter-than-normal conditions (see left-hand graph of figure P2).

For August-September-October, signals are initially weak, with only a slightly greater-than-normal chance of low pressure prevailing across northern Europe. However, for the period as a whole, there is an increased likelihood of a stronger-than-normal westerly flow, and low pressure prevailing across northern Europe. This results in a modest increase in the likelihood of above-average rainfall (see right-hand graph of figure P2). The chances of below-average rainfall, however, are close to normal. Prolonged spells of dry weather are not precluded even if the Outlook period turns out to be wetter-than-normal overall.

Fig P2

1-month and 3-month UK outlook for precipitation in the context of observed climatology

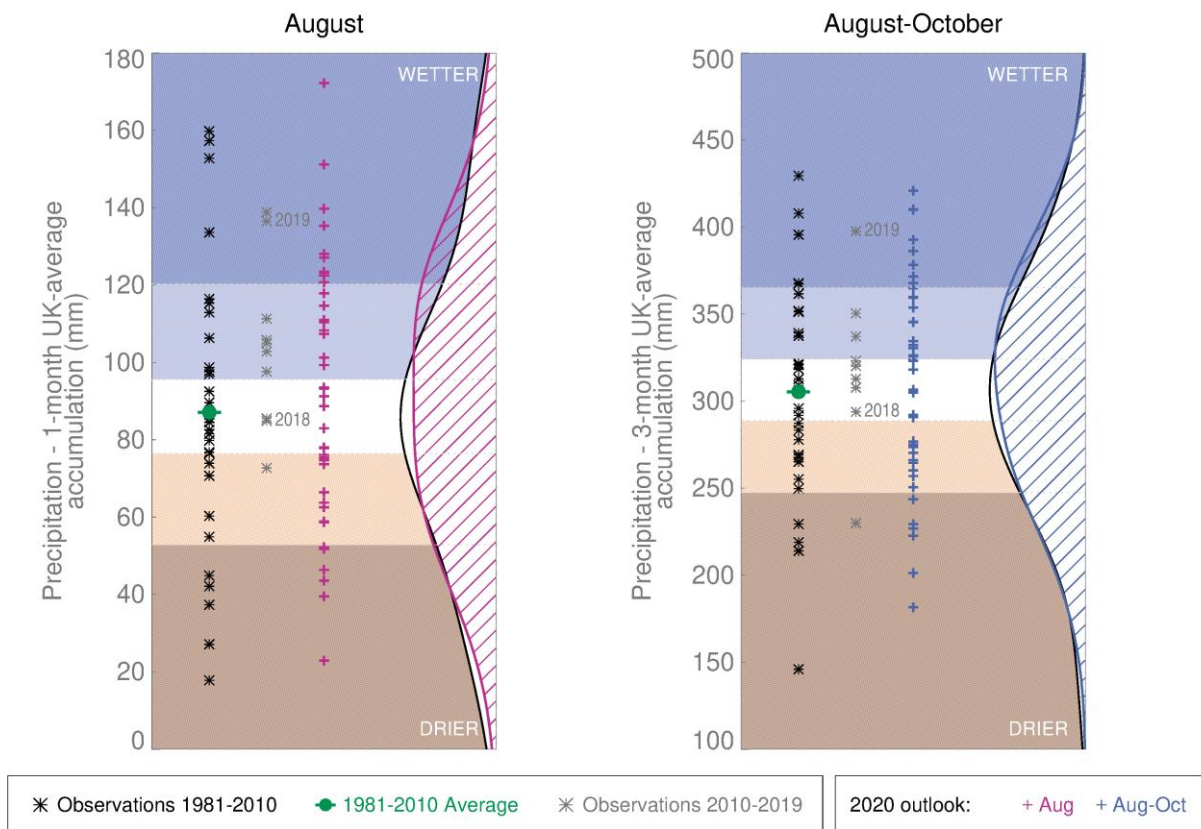


Fig P1

3-month UK outlook for precipitation in the context of the observed annual cycle

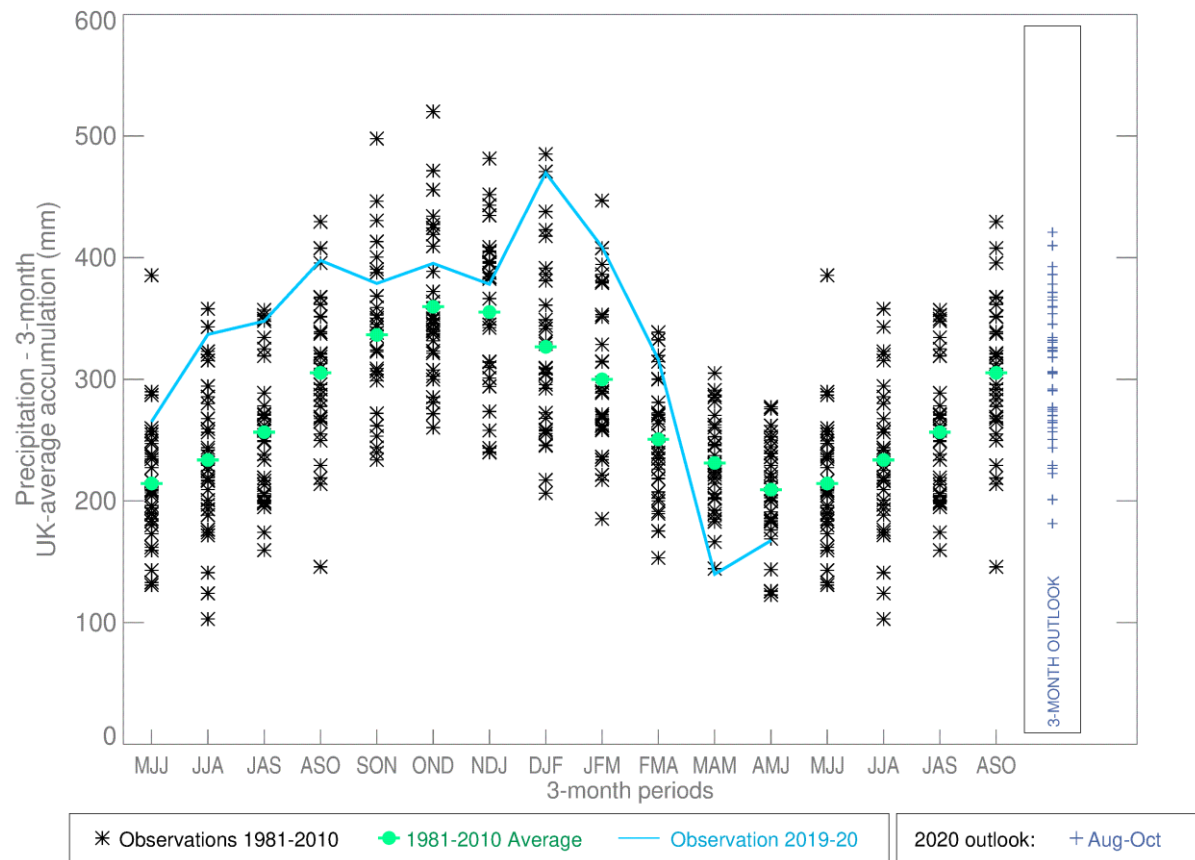
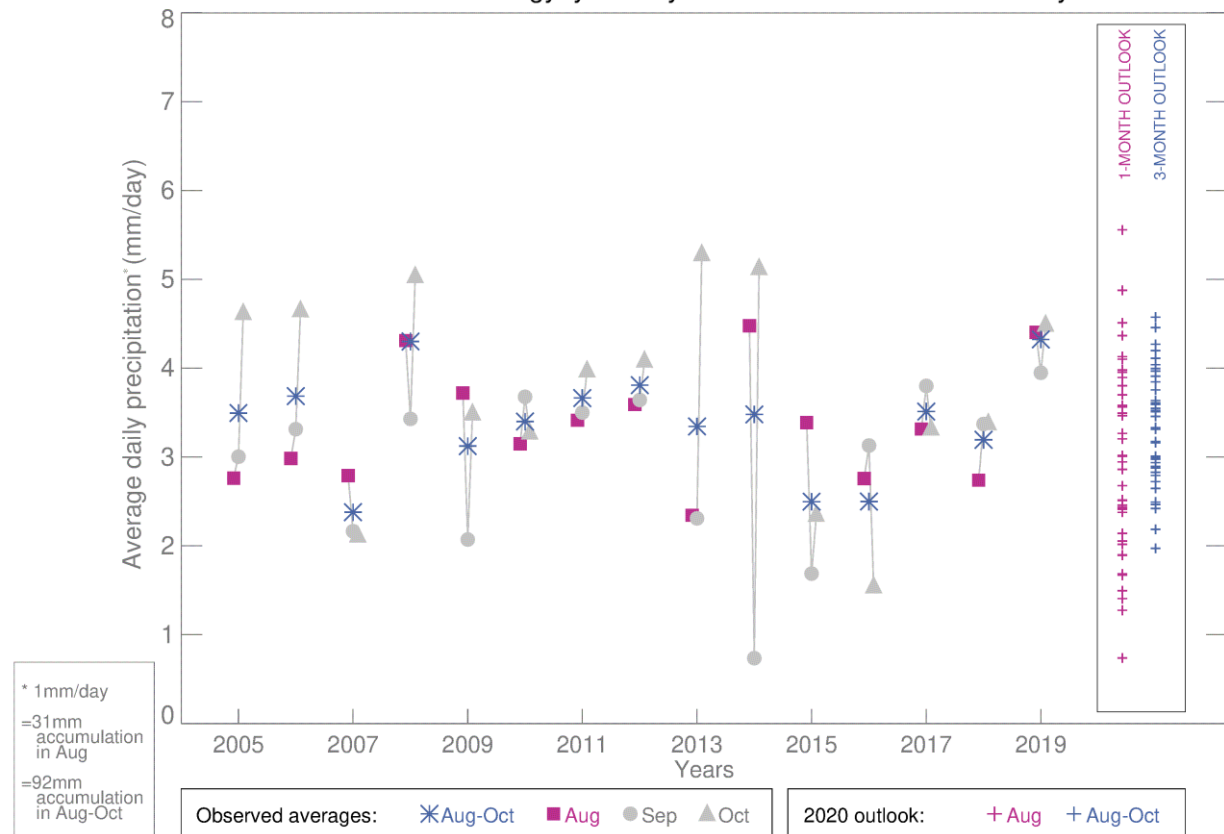


Fig P3

1-month and 3-month UK outlook for precipitation in the context of recent climatology: year-to-year and within-season variability



This Outlook provides an indication of possible temperature and rainfall conditions over the next 3 months. It is part of a suite of forecasts designed for contingency planners.

The Outlook should not be used in isolation but should be used with shorter-range and more detailed (30-day, 15-day and 1-to-7-day) forecasts and warnings available to the contingency planning community from the Met Office.