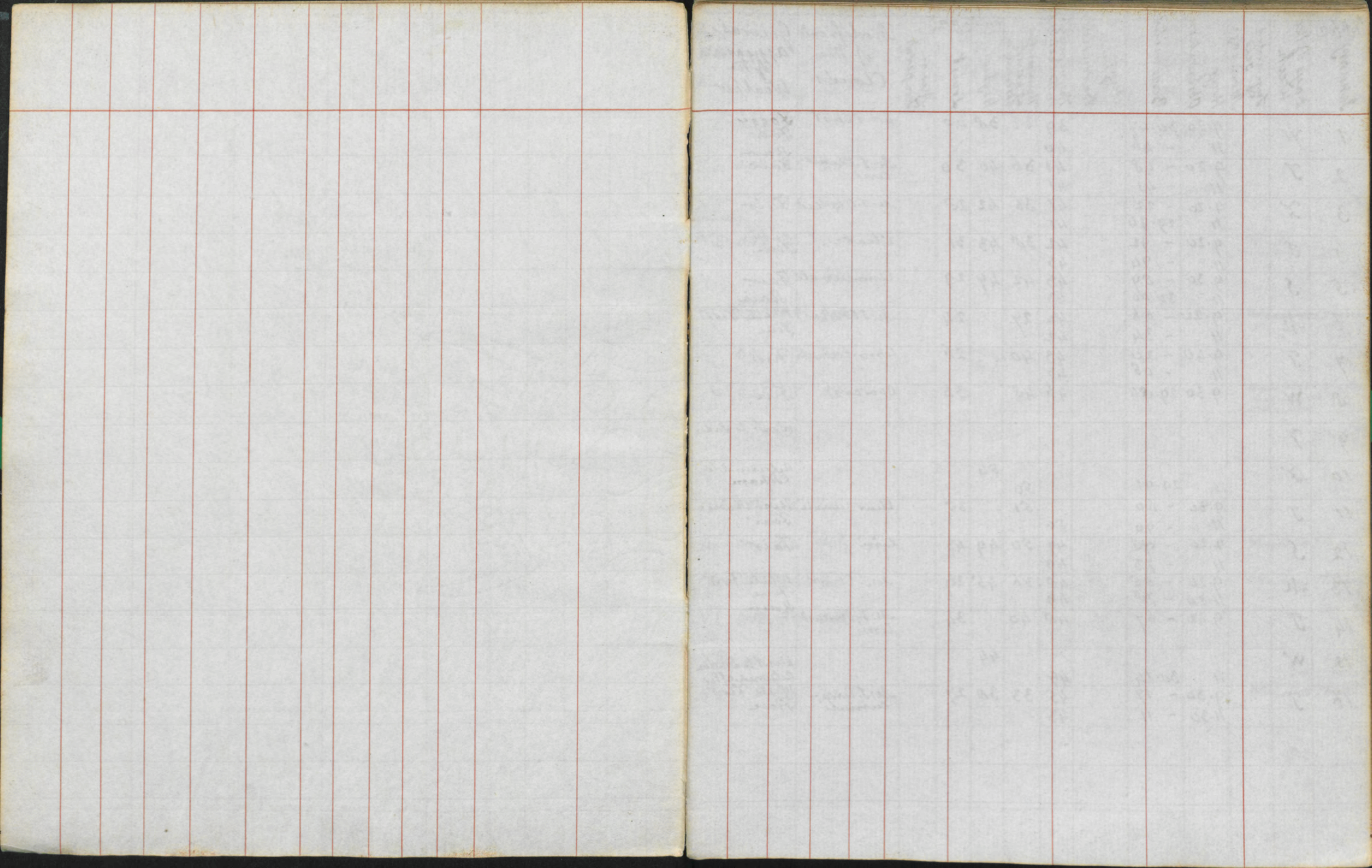


Cobham Lodge Surrey

HA - LODGE
(SURREY)

1862

COB
06



10/62 January	Days of the Week	Time rises & sets Moon age	Hour of Observation	Barometer	Height of the Barometer	Thermometer in the vestibule	Thermometer at height of observation	on the post Highest	Lowest	Mean Temperature	Modification of the Clouds	General appearance of the Weather	Direction of the Wind	Rain	Try	Wet	Miscellaneous Observations	Observations relating to Animals	Observations relating to Plants
1	W		9.20	30.47		39	33	30	30		Overcast	Foggy Fair	E		31	30			Russian violets
			11.	- 46		40													
2	T		9.20	- 48		41	36	40	30		M. J. Clear Ciri	Rain Fair	SE	0.02	35	35			
			11.	- 41		41													
3	F		9.20	- 22		41	36	42	20		M. J. Overcast	Fair	NW		34	34			
			11	29.94		41													
4	T		9.20	- 92		42	30	43	31		Clear	Rain Fine	NE	0.03	39	35			Woodcock gaps about 11 morning
			11.	- 94		43													
5	S		9.30	- 89		43	42	49	29		Cirro-cumuli	Fair	N		42	41			
			11.	30.00		43													
6	M		9.20	- 66		42	29		24		M. J. Overcast	White Frost Fine	N	0.00	29	20			Windows thining
			11	- 34		42													
7	T		9.40	- 20		43	40		26		Cirro-cumuli	Fine	N	0.01	39	30			
			11.	- 05		47													
8	W		9.30	29.80		46	40		36		Overcast	Fine	W	0.12	45	43			Hall door window checked on the outside
												Went to Lodon							
9	T																		
10	F							54				Returned to Colham							
				29.91			50												
11	T		9.30	- 60			51		35		Clear Cumuli	High wind Fair	JW	0.24	52	49			
			11.	- 90		50													
12	S		9.20	- 90		49	50	49	43		Ciri	Fair	JW		42	42			Windows thining
			11	- 73		49													
13	M		9.20	- 85		40	36	45	29		M. J. Clear	White Frost Fine	JW		36	35			Windows thining
			11.24	- 70		49													
14	T		9.40	- 67		40	40		34		M. J. Overcast Ciri	Rain	NE	0.12	39	30			
15	W							44											
			11	30.14		47						Went to Lodon							
16	T		9.30	- 17		45	33	30	27		M. J. Cirro-cumuli	Returned after White Frost Fine	NE		32	31			Windows thining
			11.30	- 11		43													
														0.62					

1862	January	Days of the Week	Time of day	Hours	Barometer	Mean of the Barometer	Thermometer in the shade	Thermometer at height of observation	Highest	Lowest	Mean temperature	Modification of the Clouds	General appearance of the Weather	Direction of the Wind	Rain	Dry	Wet	Miscellaneous Observations	Observations relating to Animals	Observations relating to Plants	
17	F		9.30	30.11		42	30	35	22			Overcast	White Frost Fine	E		29	28			Windows iced	
			11.20	-14		40											ice				
18	T		9.20	-16		38	29	35	19			Cirrocumuli	Very fine	E		29	28			Windows iced	
			11.30	-08		36											ice				
19	S		9.20	-04		35	21	31	17			Ciri	Fine	SE		23	23			Windows iced	
			11.30	29.92		36															
20	M		9.25	-81		36	30		20			Overcast	Fair	NE	0.02	29	27				
			11														ice				
21	T		8.									Overcast	Went to London Fleet or ear	E							
			10.30	29.60		37															
22	W		9.20	-55		39		40	25			Overcast Ciri	Rain Fair	JW	0.00	42	42			Windows in visible from outside	
			11.20	-70		41															
23	T		9.20	-77		41	39		33			Clear Cumuli Nimbus	Fair Rain	JW	0.03	38	38				
			11.	-56		42															
24	F		9.20	-55		45	50	52	36			Clear Cumuli	High Wind Rain	W	0.17	48	46			Erica herbacea	
			11	-60		47															
25	T		9.20	-72		47	46	47	43			Overcast	Rain	W	0.10	45	45				
			11.	30.20		47															
26	S		9.20	-33		44	32		25			Clear	White Frost	NW	0.25	32	31			Windows streaming	
27	M							47													
			10.30	30.14		45															
28	T		9.20	29.90		44	41		32			M: S. Overcast	Rain Fair	NW	0.03	39	39			Windows dewed	
			11.	-90		46															
29	W		9.20	-90		47	50	54	30			Overcast	Rain Fine	JW	0.05	49	47				
			11.	-86		48															
30	T		9.20	-84		49	51		46			Overcast Ciri	Wind-Fair	W	0.06	50	48			Eranthis hyemalis	
			11.	-80		50															
31	F		9.20	-83		51	54	55				Ciri	Rain Wind High wind	W	0.41	53	51			Arabis on the rock near the iron fence	
			11.	30.00																	
											</										

7862 February	Days of the Week	Day of the Month	Hour of Observation	Barometer	Mean of the Barometer	Thermometer in the vestibule	Thermometer up stairs observation	on the port Highest	Lowest	Mean temperat	Modification of the Clouds	General appearance of the Weather	Direction of the Wind	Rain	Dry	Wet	Miscellaneous Observations	Observations relating to Animals	Observations relating to Plants
1	S		9.40	30.00		52	53	55	40		Overcast	Wind Fair	W	0.02	52	50			Snowdrops
			11	- 10		53													
2	S		9.20	- 24		53	50		46		overcast	Fair	W						
			11.	- 22		53													
3	M		9.20	- 27		53	52	55	45		Overcast	Fair	W		51	50			
			11	- 32		54													
4	T		9.20	- 33		53	52	56	46		Overcast	Fine	W		51	50			arabis caucasica
			11	- 42		54													
5	W		9.20	- 20		53	50		45		Cirri	Fine	NW		49	47			Crocus
								56											
6	T		11.	- 10		52						Fine went to London	NW						
7	F		9.25	- 20		49	35	56	31		M: F. Clear Cumuli	Fine	NE		33	32			Windows. Streaming Frost Sea Kale
			11.	- 50		48						a little snow at night							Windows streaming
8	T		9.25	- 65		44	20	56	24		M: F Foggy	Fine	E		27	26 ice			
			11. 20	- 70		43													
9	S		9.25	- 70		41	20		19		M: F. Cirri	most beautif	E		22	22 ice			Windows closed
			11.	- 64		40													
10	M		9.30	- 62		41	37		31		Overcast	Fine	NE		34	34			
			11.	- 49		41						E. F							
11	T		9.30	- 40		40	34		22		M: F. Overcast	White Frost	N		32	31 ice			Windows steam
			11.	- 27		40						Fine							
12	W		9.30	- 10		42	42	46	31		M: F. Overcast	Fine	NE		40	40			
			11.	- 12		43													
13	T		9.30	- 16		43	30		35		Overcast Ciri	Fine	NE		36	35			
			11	- 16		43													
14	F		9.30	- 17		43	30		33		Overcast Ciri	Fine	E		36	35			
			11.	- 20		43													
														0.02					

1862	March	Days of the week	Time of day	Hour of observation	Barometer	Mean of the Barometer	Thermometer in the vestibule	Thermometer at the foot of the chimney	Highest	Lowest	Mean temperature	Modification of the Clouds	General appearance of the Weather	Direction of Wind	Rain	Leg	Wet	Miscellaneous Observations	Observations relating to animals	Observations relating to plants
1	T			10.15	30.00		44		47			Overcast	Fair	SE						
2	S			9.30	29.77		43	36	39	29		Overcast	Fair	NE		33	31	Lightning seen at night		Soft seed Helleborus felicifolius
3	M			9.30	- 42		41	36	41	21		M: T. Overcast	Snow showers	NW		33	32			windows streaming
4	T			10.40	- 50		41													
5	W			9.30	- 70		39	30	45	19		M: T. Clear	White frost Very fine	NW		30	30			Windows iced
6	F			11.	- 90		40					Clear. Cini	Very fine Wind, rain & hail Begin	NW		37	36			
7	S			9.30	30.00		41	39		20		Overcast		JW	0.37	53	52	Saw remains of ice & snow near Peter's place		Entrance window covered on outside
8	T			11.20	- 63		44	55	56	35		Overcast	Fair	JW	0.12	53	51			Last of the Easter Beanie beans.
9	F			9.30	- 53		40	54	50	46		Clear. Cumuli	Fine - about Thunder lightning Wind & rain	W		51	50			Nonpareils apples -
10	S			11.	- 59		52	53	63	46		Cumuli		SW	0.06	49	44			
11	M			9.30	- 59		54	50	52	43		Overcast	Fair	SW	0.13	47	46			
12	T			11.30	- 75		52					Overcast	Rain	W	0.17	49	40			
13	F			9.30	30.00		52	49	57			Overcast	Fair	SW	0.13	47	46			
14	S			11.	- 16		53					Overcast	Rain	W	0.17	49	40			
15	M			9.30	- 30		53	50	54	39		Overcast	Fair	W	0.17	49	40			
16	T			11.	29.85		53					Overcast	Fair	W	0.17	49	40			
17	F			9.30	- 83		53	51	55	42		Overcast	Rain	JW	0.01	49	49			
18	S			11.30	- 90		53					Overcast	Fair	JW	0.01	49	49			
19	M			9.30	30.03		52	40	54	39		M: S. Overcast	Fog - Fair	NE	0.02	45	44			
20	T			11.	- 19		53					M: S. Overcast	Foggy	E		42	42			
21	F			9.30	- 25		52	49	46	40		M: T. Overcast	Foggy	E		41	40			
22	S			11.	- 24		51					M: T. Overcast	Foggy	E		41	40			
23	M			9.30	-		50	43	40	40		M: T. Overcast	Foggy	E		41	40			
24	T			11.	- 16		50					M: T. Overcast	Foggy	E		41	41			
25	F			9.30	- 10		50	44		40		M: T. Overcast	Foggy	E		41	41			
26	S			11.	29.97		50					Rain						Sand heaps on the gravel in 7 places	Ribes sanguineum Helleborus viridis	

1862	April	Days of the Week	Ther. rises & sets	Moon's age	Hour of Observation	Barometer	Mean of the Barometer	Thermometer in the Vestibule	Thermometer at foot of observation	Highest	Lowest	Mean temperature	Modification of the Clouds	General appearance of the Weather	Direction of the Wind	Rain	Dry	Wet	Miscellaneous Observations	Observations relating to Animals	Observations relating to Plants
1	T				9.30	30.00		53	53	57	39		Overcast Cumuli	Fair	T	0.02	51	40			<i>Orobanchaceae</i> <i>Campanula trachelium</i> <i>Polanilla alba</i> <i>Muscari racemosa</i>
2	W				9.30	- 83		54	55	56	47		Overcast	Wind Rain	SW	0.10	54	53			<i>Narcissus</i> <i>Protophys</i> <i>Sella italica</i>
3	T				9.30	- 72		55	53	62	47		Clear. Cumuli	Very fine	NW	0.34	52	49	River out in the meadow		<i>Corydalis</i> <i>Galanthus</i> <i>Anemone pulsatilla</i> <i>Anemone hepatica</i> <i>Ranunculus alba</i> <i>Ranunculus japonica</i> <i>Narcissus</i> <i>Galanthus</i> <i>Doronicum</i> <i>Pulsatilla</i> <i>Macrorhiza</i> <i>Aquilegia vulgaris</i>
4	F				9.30	30.15		54	40	50	41		M: T Overcast	Very fine	NW	0.01	46	44			<i>Narcissus</i> <i>Protophys</i> <i>Sella italica</i> <i>Campanula trachelium</i> <i>Polanilla alba</i> <i>Muscari racemosa</i>
5	T				9.30	- 20		55	54	59	43		Clear. Cumuli	Fine	W		52	49	Dew		<i>Narcissus</i> <i>Protophys</i> <i>Sella italica</i> <i>Campanula trachelium</i> <i>Polanilla alba</i> <i>Muscari racemosa</i>
6	S				9.30	- 05		55	52	50	46		Overcast	Rain	W	0.02	51	50		Pe bird heard	<i>Erica mediterranea</i> <i>Helianthus</i> <i>Helianthus</i>
7	M				9.30	- 24		55	52	53	40		M: T Overcast	Fair	W	0.12	50	50	Heavy dew		<i>Erica mediterranea</i> <i>Helianthus</i> <i>Helianthus</i>
8	T				9.30	- 33		54	47	40	43		M: T Overcast	Fair. dull	SW		45	1.1			
9	W				9.30	- 20		52	45	40	40		Overcast	Rain	NE	0.23	42				
10	T				9.30	- 06			45	57	41		Overcast	Rain	SE	0.40	42				
11	F				9.30	- 22		51	43	49	42		Overcast	Rain	N		42				
12	T				9.30	- 37		48	40	49	27		Clear. Fibrous	Very fine	NE	0.02	30				
13	S				9.30	- 30		46	39	49	25		Clear. Cumuli	Fine	N		37				
14	M				9.30	- 30		46	45	49	27		Clear. Cumuli	Fair	N		42				
15	T				9.30	- 16		46	43	52	20		M: T Overcast	Fine	NE	0.01	40				

Thermometer on post during absence
Highest 57 Lowest 44
W. Feb. was 40
Rain in August 7.25
Sept. 7 Rain. 5h.
Sept. 8.

The last 2 of the
Broom & flower
as anquifolius
& calathodorus
ga crassifolia
sh/beans & last of the
over

Gmelina
windless dewed
just
aris

1862	April	Days of the Week	Ther- m- eter at Jett	Mo- on's age	Hour of Ob- serva- tion	Barometer	Mean of the Barometer	Thermometer in the Vestibule	Thermometer in the open air	Highest	Lowest	Mean temperat	Modification of the Clouds	General Appearance of the Weather	Dir- ect of the Rain	Wet	Dry	Miscellaneous Observations	Observat relating to Animals	Observat relating to Plants
1	T		9.30	30.00		53	53	57	39		Overcast Cumuli	Fair	T	0.02	51	40			Orob. verna Canad. & verna Potentilla alba Muscari racemosa	
2	W		9.30	- 83		54	55	56	47		Overcast	Wind Rain	SW	0.10	54	53			Narcissus propinquus Scilla italica	
3	T		9.30	- 72		55	53	62	47		Clear. Cumuli Cirrostrati	Very fine	NW	0.34	52	49		Rever on fir the meadows	Corydalis bulbosus anemone pallida anemone scabra Queltia alba Paeonia japonica Narcissus calathinus Double white pumpkin Androsace Mauro carpa anemone nemorosa Erica mediterranea alba Festularia melagris alba Berberis dulcis	
4	F		9.30	30.15		54	40	50	41		N: T Overcast	Very fine	NW	0.01	46	44			Narcissus usamp. Queltia aurea Philogyne triloba	
5	T		9.30	- 20		55	54	59	43		Clear. Cumi Cumuli	Fine Rain	W		52	49		Dew		
6	S		9.30	- 05		55	52	50	46		Overcast	Rain	W	0.02	51	50		P. bird heard		
7	M		9.30	- 24		55	52	53	40		N: T Overcast	Fair Foggy	W	0.12	50	50		Heavy dew		
8	T		9.30	- 33		54	47	40	43		Overcast.	Fair. dull	SW		45	44				
9	W		9.30	- 20		52	45	40	40		Overcast	Rain	NE	0.23	42	42		Nightingale	Cardamine pratensis The last 2 of the Broom & flower Acorns	
10	T		9.30	- 06			45	57	41		Overcast	Rain Fair	SE	0.40	43	43			Narcissus angustifolius calathinus Saxifraga crassifolia First French Beans & last of Tulare Wallflower	
11	F		9.30	- 22		51	43	49	42		Overcast	Rain Fine	N E		42	41		Swallows seen.		
12	T		9.30	- 37		48	40	49	27		Clear. Fibrous Cumi E. T.	Very fine	NE	0.02	30	34		Ice		
13	S		9.30	- 30		46	39	49	25		Clear. Cumuli	Fine	N		37	34				
14	M		9.30	- 30		46	45	49	27		Clear. Cumuli Cirrostrati	Fair	N		42	30			Orob. Gmelini winders dewed	
15	T		9.30	- 16		46	43	52	20		N: T Overcast	Fine	NE	0.01	41	39			Narcissus Fellaria	

1862	April	Days of the week	Time rises & sets of the Moon	Hour of observation	Barometer	Mean of the barometer	Thermometer in the shade	Thermometer without observation	Highest	Lowest	Mean temperature	Modification of the Clouds	General appearance of the Weather	Direction of the Wind	Rain	Dry	Wet	Miscellaneous Observations	Observations relating to animals	Observations relating to plants	
16	W			9.30 11	30.30 - 03		46 47	50	53	25		Overcast & Cirri cumuli	Fine	W		46	43			Fertilisaria Meleagris. Acer saccharinum Pachyrhizus procumbens Sorbis longuella Mespilus cana densis Taxi fraga cordifolia Pear Alyssum saxatile Fertilisaria pyrenaica Turinago turpava Anchusa bipinnatis Van geria primrose Swarth Almond Scilla comana Fritillaria grandiflora Ternstroemia Syringaria virginica Silybra spistabilis Laural - Last of the none bareils Vicia denia triloba	
17	T			9.30 11	29.98 30.30		48 50	52	58	43		Clear	Rain Very fine	NW	0.06	50	45				
18	F			9.30 11	- 31 - 30		50 52	55	50	40		Overcast & Cirri	Fine	NW		52	49				
19	T			9.30 11	- 30 29.98		52 52	57	59	46		Cirri	Fine - wind	W		55	52		Nightingale heard		
20	S			9.30 11	30.10 - 12		54 55	56	64	49		Overcast	Fine	W		54	52				
21	M			9.30 11	- 10 - 10		55 56	58	65	42		Clear. Cumuli	Fine	W		56	52				
22	T			9.30	29.90		56	60		45		Clear. Cirri Cirri cumuli Cirrostrati Nimbus	Rain Wind	TW		58	55		Deutropis quaster	a few Hawthorn in the Grape tree	
23	W			10.30	30.10		56		63				Want to London.	NW					Cowslips Doubled as primrose		
24	T			9.30 11	- 16 - 04		56 58	57	65	43		Cirri. cumuli	Very fine	W	0.14	55	51		Cuckoo heard	White P. com. Desbaria bulbifera Anemone pulsatilla	
25	F			9.30 11	- 00 - 05		58 61	61	77	47		Clear Cirro-cumuli & Strato	Thunder Rain Fine	W	0.17	58	50		Potapillies Sapauda Chrysanth.	Scilla nutans Stellaria Holostea Leucojum aestivum	
26	T			9.30 11	- 01 - 14		60 61	59	68			Cirri	Very fine	W	0.19	59	50		Mercurialis Festuca ascaticus Lymphytium Portia quadrifida Phlox subulata Ranunculus acris Atriplex phoenicea Waldschmidt Doronicum Vicia flavicarpa	Phyllis Euphorbia Silybistria bulbifera Sedum Lilium Ranunculus Atriplex Waldschmidt Doronicum Vicia	First Asparagus First Cucumber
27	S			9.30 11	- 19 - 23		60 57	59	71	40		Clear. Cumuli	Very fine	N		55	51		Saw Jupiter & Saturn near together.		
28	M			9.30 11	- 28 - 34		58 60	61	75	38		Clear. Cumuli	Very fine	W		57	53			Li Hla webs	
29	T			9.30 11	- 41 - 33		59 59	62	74	37		Clear	Very fine	NW		59	53			White, purple Little webs & Persian Lilacs	
30	W			9.30 11	- 27 - 13		60 61	62	80	39		Clear	Very fine	TW		59	54			Dodecatheon maudii	
															1.03						

1/1862	May	Day of Week	Supersat. & Morn. age	Hour of Observation	Barometer	Mean of the Barometer	Thermometer in the Vestibule	Thermometer at the top of Observation	Highest	Lowest	Mean temperature	Modification of the Clouds	General appearance of the Weather	Direction of the Wind	Rain	Dry	Wet	Miscellaneous Observations	Observations relating to Animals	Observations relating to Plants
1	T			9.30			62	77	52			Overcast	Rain very fine	W	0.03	58	55			<i>Staph. scutellariae campanulata alba</i> <i>Asperula odorata</i> <i>Glechoma hederacea</i> <i>Chelidonium majus</i> <i>Adonis vernalis</i> <i>Papaver cambricum</i> <i>Chelidonium majus</i> <i>Paeonia officinalis</i> <i>Ranunculus acris</i> <i>Delphinium consolida</i> <i>Hyoscyamus Scopolii</i> <i>Veronica prostrata</i> <i>Aethiops</i> <i>Ranunculus elyris</i> <i>Lupinus varius</i> <i>Geranium angustifolium</i> <i>Glechoma hederacea</i> <i>Guillemetia cerulea</i> <i>Alchemilla thymifolia</i> <i>Rhododendron</i>
2	F			9.30	- 20		62	58	60	51		Clear. Cumuli	Very fine	N	0.03	55	52			<i>Staph. scutellariae campanulata alba</i> <i>Asperula odorata</i> <i>Glechoma hederacea</i> <i>Chelidonium majus</i> <i>Adonis vernalis</i> <i>Papaver cambricum</i> <i>Chelidonium majus</i> <i>Paeonia officinalis</i> <i>Ranunculus acris</i> <i>Delphinium consolida</i> <i>Hyoscyamus Scopolii</i> <i>Veronica prostrata</i> <i>Aethiops</i> <i>Ranunculus elyris</i> <i>Lupinus varius</i> <i>Geranium angustifolium</i> <i>Glechoma hederacea</i> <i>Guillemetia cerulea</i> <i>Alchemilla thymifolia</i> <i>Rhododendron</i>
3	S			9.30	- 33		61	51	47	39		Overcast	Very fine	NE		47	46			<i>Staph. scutellariae campanulata alba</i> <i>Asperula odorata</i> <i>Glechoma hederacea</i> <i>Chelidonium majus</i> <i>Adonis vernalis</i> <i>Papaver cambricum</i> <i>Chelidonium majus</i> <i>Paeonia officinalis</i> <i>Ranunculus acris</i> <i>Delphinium consolida</i> <i>Hyoscyamus Scopolii</i> <i>Veronica prostrata</i> <i>Aethiops</i> <i>Ranunculus elyris</i> <i>Lupinus varius</i> <i>Geranium angustifolium</i> <i>Glechoma hederacea</i> <i>Guillemetia cerulea</i> <i>Alchemilla thymifolia</i> <i>Rhododendron</i>
4	S			9.30	29.90		59	67	78	47		Cum. Cirro-Overcast	Fine	JW		62	58			<i>Staph. scutellariae campanulata alba</i> <i>Asperula odorata</i> <i>Glechoma hederacea</i> <i>Chelidonium majus</i> <i>Adonis vernalis</i> <i>Papaver cambricum</i> <i>Chelidonium majus</i> <i>Paeonia officinalis</i> <i>Ranunculus acris</i> <i>Delphinium consolida</i> <i>Hyoscyamus Scopolii</i> <i>Veronica prostrata</i> <i>Aethiops</i> <i>Ranunculus elyris</i> <i>Lupinus varius</i> <i>Geranium angustifolium</i> <i>Glechoma hederacea</i> <i>Guillemetia cerulea</i> <i>Alchemilla thymifolia</i> <i>Rhododendron</i>
5	M			9.30	30.08		61	66	78	51		Clear. Cumuli	Very fine	JW	0.14	62	58			<i>Staph. scutellariae campanulata alba</i> <i>Asperula odorata</i> <i>Glechoma hederacea</i> <i>Chelidonium majus</i> <i>Adonis vernalis</i> <i>Papaver cambricum</i> <i>Chelidonium majus</i> <i>Paeonia officinalis</i> <i>Ranunculus acris</i> <i>Delphinium consolida</i> <i>Hyoscyamus Scopolii</i> <i>Veronica prostrata</i> <i>Aethiops</i> <i>Ranunculus elyris</i> <i>Lupinus varius</i> <i>Geranium angustifolium</i> <i>Glechoma hederacea</i> <i>Guillemetia cerulea</i> <i>Alchemilla thymifolia</i> <i>Rhododendron</i>
6	T			9.30	- 20		63	69	82	59		Overcast Cum.	Spitting Fine	NW		65	61			<i>Staph. scutellariae campanulata alba</i> <i>Asperula odorata</i> <i>Glechoma hederacea</i> <i>Chelidonium majus</i> <i>Adonis vernalis</i> <i>Papaver cambricum</i> <i>Chelidonium majus</i> <i>Paeonia officinalis</i> <i>Ranunculus acris</i> <i>Delphinium consolida</i> <i>Hyoscyamus Scopolii</i> <i>Veronica prostrata</i> <i>Aethiops</i> <i>Ranunculus elyris</i> <i>Lupinus varius</i> <i>Geranium angustifolium</i> <i>Glechoma hederacea</i> <i>Guillemetia cerulea</i> <i>Alchemilla thymifolia</i> <i>Rhododendron</i>
7	W			9.30	29.96		64	60	65	53		Overcast	Rain	W	0.85	59	57			<i>Staph. scutellariae campanulata alba</i> <i>Asperula odorata</i> <i>Glechoma hederacea</i> <i>Chelidonium majus</i> <i>Adonis vernalis</i> <i>Papaver cambricum</i> <i>Chelidonium majus</i> <i>Paeonia officinalis</i> <i>Ranunculus acris</i> <i>Delphinium consolida</i> <i>Hyoscyamus Scopolii</i> <i>Veronica prostrata</i> <i>Aethiops</i> <i>Ranunculus elyris</i> <i>Lupinus varius</i> <i>Geranium angustifolium</i> <i>Glechoma hederacea</i> <i>Guillemetia cerulea</i> <i>Alchemilla thymifolia</i> <i>Rhododendron</i>
8	T			9.30	- 08		61	59	65	47		Clear. Cumuli	Fair	W	0.77	57	53			<i>Staph. scutellariae campanulata alba</i> <i>Asperula odorata</i> <i>Glechoma hederacea</i> <i>Chelidonium majus</i> <i>Adonis vernalis</i> <i>Papaver cambricum</i> <i>Chelidonium majus</i> <i>Paeonia officinalis</i> <i>Ranunculus acris</i> <i>Delphinium consolida</i> <i>Hyoscyamus Scopolii</i> <i>Veronica prostrata</i> <i>Aethiops</i> <i>Ranunculus elyris</i> <i>Lupinus varius</i> <i>Geranium angustifolium</i> <i>Glechoma hederacea</i> <i>Guillemetia cerulea</i> <i>Alchemilla thymifolia</i> <i>Rhododendron</i>
9	F			9.30	29.84		60	55		46		Overcast	Rain Showers	W	0.58	53	51			<i>Staph. scutellariae campanulata alba</i> <i>Asperula odorata</i> <i>Glechoma hederacea</i> <i>Chelidonium majus</i> <i>Adonis vernalis</i> <i>Papaver cambricum</i> <i>Chelidonium majus</i> <i>Paeonia officinalis</i> <i>Ranunculus acris</i> <i>Delphinium consolida</i> <i>Hyoscyamus Scopolii</i> <i>Veronica prostrata</i> <i>Aethiops</i> <i>Ranunculus elyris</i> <i>Lupinus varius</i> <i>Geranium angustifolium</i> <i>Glechoma hederacea</i> <i>Guillemetia cerulea</i> <i>Alchemilla thymifolia</i> <i>Rhododendron</i>
10	S			10.30	- 80		57		65				Fair	W						<i>Staph. scutellariae campanulata alba</i> <i>Asperula odorata</i> <i>Glechoma hederacea</i> <i>Chelidonium majus</i>

1862	May	Days of the Week	Time of day	Hours of observation	Barometer	Mean of the Barometer	Thermometer in the shade	Thermometer exposed to observation	Highest	Lowest	Mean temperature	Modification of the Clouds	General appearance of the Weather	Direction of the Wind	Rain	Dry	Wet	Miscellaneous Observations	Observations relating to animals	Observations relating to plants
17	S		9.30	30.11	57	43	74					N.S. Clear Cumuli	Very fine	N		59	56			
			11.	- 22	59															
18	S		9.30	29.26	59	66	80	43				Overcast	Very fine	JW		62	58	Little webs		Clematis
			11.	- 24																
19	M		9.30	- 22		71	82	41				Ciri	Very fine	JW		65	60	Little webs	Bunium bulbocastanum	
			11.	- 11	63															
20	T		9.30	29.96	62	63	69	45				Overcast	Very fine	JW		62	58	Little webs	Aropa bella clonua	
			11.	- 86	62															
21	W		9.30	- 70	60	50	60	40				Overcast	Rain	S	0.04	49	48		Lupinus arboreus yellow	
			11.	- 68	57								Shower						Papaver semperflorens double	
																			Paeonia fimbriata	
22	T		9.30	- 88	58	57	65	39				Clear Cumuli	Very fine	W	0.75	55	51		Feathered Hyacinth	
			11.	- 94	57								Shower						Papaver orientale + bracteatum	
23	F		9.20	- 93	58	57		47				Overcast		JW	0.01	55	54		Hygonium pictum	
			11.	- 97															Honey suckle	
24	S												Went to London	NW					Philadelphus syriaca	First strawberries from the pit
			11.	30.14	61		69					Very fine							Scanthus proterus	
25	S		9.20	- 19	60	60	69	45				Clear Cumuli	Very fine	W		57	53		Malva maculata	
			11.	- 22	61														aconitum napellus - helix	
26	M		9.20	- 25	60	62	69	41				Clear Ciri	Very fine	SW	0.04	59	54		Echephelia eximia	
			11.	- 10	61							Cumuli							anchusa m. ornata - italica	
27	T		9.20	- 09	60	56	69	51				Overcast	Rain	JW		55	55		Hypericum Permedianum Vaseps	
			11.	- 04	61														Panvarium Myricum	
28	W		9.20	- 04	61	61	70					Overcast	Fine	W	0.05	60	58		Hernyocallis flavus	
			11.	- 02	62														Bigelalis purpurascens	
29	T		9.20	- 03	62	65	77	55				Ciri - Cumuli	Very fine	W		62	60		adlum moly	Many g. old.
			11.	29.84	63														aconitum yellow	
30	F		9.20	- 67	63	60	68	54				Overcast	Rain	W	0.04	59	59		Vesicaria thymata	
			11.	- 73	65								Fair						is in III	
31	S		9.20	30.00	63	58	68	54				Overcast	Very fine	N	0.04	57	55		Psichotria white	
			11.	- 15	63														Polanilla multifida	

3.66

1862	June	Days of the week	Therm. at 4 sets	Moons age	Hour of Observation	Barometer	Mean of the Barometer	Thermometer in the vestibule	Thermometer at hour of observation	Highest	Lowest	Mean temperature	Modification of the clouds	General appearance of the weather	Direction of Wind	Rain	Dry	Wet	Miscellaneous Observat.	Plants relating to Animals	Plants relating to
	1	S			9.20	30.15		62	64		40		Mod. Cumuli	Most beautiful	NE		60	57		Heuracium bifurcum allium	First peas
	2	M			11.	30.20		65		85				Very fine I went to London	W						
	3	T			9.20	- 22		64	66	69	43		Overcast	Fine	W		62	50		Ornithogalum flum croceum	
					11	- 25		63													
	4	W			9.20	- 28		62	64	74	44		Clear. Cumuli	Very fine	SW	0.01	61	50	Little webs.	Rose acacia	
						- 14		62													
	5	T			9.20	29.97		62	60		46		Overcast. Cum.	Rain	E					Rodonia pseudacacia Gorkenia rigens.	
					11.	- 83		62													
	6	F			9.20	- 80		62	64		52		Clear. Cumuli	Fair	SW	0.25	60	50		Scilla pseudacacia Andropogon White	
					11.	- 77		62						Windy Rain							
	7	T			9.20	- 62		63	60	70	55		Clear. Cumuli	Wind	SW	0.04	64	63		Spiraea alba	
					11.	30.00		63													
	8	S			9.20	30.00		63	62	72	50		Clear. Cumuli	Rain Fine	W	0.05	60	50		Silene Tris Lysium Boagolaskia Scilla capitata Andropogon	

1862	June	Days of the Week	Therm. in Vestibule	Therm. in Room of observation	Highest	Lowest	Mean Temperature	Modification of the Clouds	General appearance of the Weather	Direction of Wind	Rain	Dry	Wet	Miscellaneous Observations	Observations relating to animals	Observations relating to plants
16	M		30.00	60	75				I went to London							<i>Androsalata</i> <i>Plantago coronopus</i>
17	T		10.36 - 20 9.20 - 21 11. - 06	61	60	74	45	Clear. Cumuli	Fine Fair Rain			61	60	Little webs		<i>Thalictrum angustifolium</i> <i>Aucubia pedunculata</i>
18	W		9.20 - 03	60	50		47	Clear Cumuli	Fair Rain	N	0.10	57	52			<i>Spergula peltifera</i> <i>Veronica longifolia</i> <i>Verbascum</i>
19	T		- 11	61		70			I went to London Fair Rain	NW						<i>Anemone</i> 1x <i>Pyronia grandiflora</i> <i>Althea</i>
20	F		9.20 - 09 11. - 03	61	59	63	47	Overcast	Fair	NW	0.03	57	52			<i>Polygala trifoliata</i> <i>Scilla maritima</i> <i>Lysimachia verticillata</i>
21	T		9.20 - 00 11. 29.90	60	60	63	50	Overcast	Fair	NW		57	54			<i>Oenothera lutea</i> <i>Scilla maritima</i> <i>Scilla maritima</i> <i>Scilla maritima</i>
22	S		9.20 - 90 11. - 90	60	61	66	50	Overcast	Fine	N		50	51			<i>Potentilla laevigata</i> <i>Cotyledon umbilicatus</i> <i>Fumaria</i>
23	M		9.20 - 94 11. 30.07	61	50	74	52	Overcast	Rain Fine	NW	0.04	56	52			<i>Pulsatilla nuttalliana</i> <i>Stenactis</i>
24	T		9.20 - 08 11. - 14	62	62	72	46	Overcast	Very fine	SW		60	57			<i>Erigeron heliophyllum</i> <i>Desmodium illinoense</i>
25	W		9.20 - 20 11. - 20	62	60	67	45	Overcast	Very fine	NW		63	57			<i>Delphinium macrophyllum</i> <i>Gratiola officinalis</i> <i>Galium aparine</i>
26	T		9.15 - 21 11. - 10	62	67	74	49	Ami	Very fine	W						<i>Filium</i> <i>Filium</i> <i>Anemone</i>
27	F		9.15 - 00 11. 29.93	62	50	58	50	Overcast	Very fine	NW		56	49			<i>Solidago nemoralis</i> <i>Anemone</i> <i>Malva</i>
28	T		9.15 - 99 11. 30.15	61	50	65	41	Clear Cumuli	Very fine	NW	0.02	57	52			<i>Cerastium tomentosum</i> <i>Silene</i> <i>Veronica</i> <i>Wahlenbergia</i>
29	S		9.20 - 15 11. - 07	61	65	71	42	Overcast	Fine	NW		60	54			<i>Coreopsis</i> <i>Mitella</i> <i>Thalictrum</i>
30	M		9.20 - 00 11. - 10	61	61	69	52	Clear. Cumuli	Very fine	N	0.05	50	52			<i>Carduus marianus</i>
											1.90					

1862	July	Day of the week	Time of day	Hour of day	Observation	Barometer	Thermometer in shade	Thermometer at hour of observation	Highest	Lowest	Mean temperature	Modification of the clouds	General appearance of the weather	Direction of Wind	Rain	Dry	Wet	Miscellaneous Observations	Observations relating to Animals	Observations relating to Plants
1	T		9.20	30.10		62	63	69	47			Overcast	Fine	W		61	58			<i>Pium umbellatum</i> <i>Malva tomentosana</i> <i>Campanula trachelium</i>
2	W		9.20	- 00		62	61		50			Overcast	Wind-Rain	W		60	57			<i>Cicer arvense</i> First dwarf beans <i>Sylvestris</i> in VII
3	T		9.20	- 34		61	60		59			Overcast	Rain	W	0.01	50	54			<i>Alstroemeria orange</i> yellow <i>Centauria maculosa</i> heptals <i>Oxyria chrysanthemum</i> orals <i>Veronica paniculata</i>
4	F		9.20	- 04		61	62	71	44			Clear. Cumuli		JW	0.25	60	55			<i>Antirrhinum</i> in VIII <i>Thymus asper</i> <i>Antirrhinum</i> <i>Thymus asper</i> <i>gibbaulis</i> <i>Centauria scabra</i> <i>Lychnis viscaria</i> <i>Hemerocallis carnea</i>
5	T		9.20	- 82		62	60	72	51			Overcast	Spitting	SW	0.01	61	50			<i>Thymus asper</i> <i>gibbaulis</i> <i>Centauria scabra</i> <i>Lychnis viscaria</i> <i>Hemerocallis carnea</i>
6	S		9.20	- 64		63	64	72	52			Overcast	Fine	SW	0.17	60	55			<i>Thymus asper</i> <i>gibbaulis</i> <i>Centauria scabra</i> <i>Lychnis viscaria</i> <i>Hemerocallis carnea</i>
7	M		9.20	- 77		63	63	70	52			Overcast	Fair	W	0.03	62	56			<i>Thymus asper</i> <i>gibbaulis</i> <i>Centauria scabra</i> <i>Lychnis viscaria</i> <i>Hemerocallis carnea</i>
8	T		9.20	30.03		64	60	76	52			Clear. Cumuli	Very fine	W	0.06	61	55			<i>Thymus asper</i> <i>gibbaulis</i> <i>Centauria scabra</i> <i>Lychnis viscaria</i> <i>Hemerocallis carnea</i>
9	W		9.20	- 21		64	61		53			Overcast	Spitting	W						<i>Thymus asper</i> <i>gibbaulis</i> <i>Centauria scabra</i> <i>Lychnis viscaria</i> <i>Hemerocallis carnea</i>
10	T								60			Clear. Cumuli	Very fine	NW						<i>Thymus asper</i> <i>gibbaulis</i> <i>Centauria scabra</i> <i>Lychnis viscaria</i> <i>Hemerocallis carnea</i>
11	F		9.20	30.04		61	59	66	41			Clear. Cirro-cu	Fine	NW	0.22	50	51			<i>Thymus asper</i> <i>gibbaulis</i> <i>Centauria scabra</i> <i>Lychnis viscaria</i> <i>Hemerocallis carnea</i>
12	S		9.20	- 67		62	62	70	51			Overcast	Very fine	W	0.37	61	59			<i>Thymus asper</i> <i>gibbaulis</i> <i>Centauria scabra</i> <i>Lychnis viscaria</i> <i>Hemerocallis carnea</i>
13	S		9.20	- 90		62	60	76	47			Clear. Cumuli	Most beautiful	JW	0.05	60	63			<i>Thymus asper</i> <i>gibbaulis</i> <i>Centauria scabra</i> <i>Lychnis viscaria</i> <i>Hemerocallis carnea</i>
14	M		9.40	- 00		62	70	75	56			Clear. Cumuli	Very fine	JW		66	61			<i>Thymus asper</i> <i>gibbaulis</i> <i>Centauria scabra</i> <i>Lychnis viscaria</i> <i>Hemerocallis carnea</i>
15	T		9.20	- 00		63	63	75	49			Clear. Cumuli	Fine	W		61	55			<i>Thymus asper</i> <i>gibbaulis</i> <i>Centauria scabra</i> <i>Lychnis viscaria</i> <i>Hemerocallis carnea</i>
16	W		9.20	- 98		63	63	70	48			Clear. Cumuli	Shower Wind	W		64	63			<i>Thymus asper</i> <i>gibbaulis</i> <i>Centauria scabra</i> <i>Lychnis viscaria</i> <i>Hemerocallis carnea</i>

July	Days of the Week	Supersaturation of air	Moon's age	Hazy or Cloudy	Barometer	Mean of the Barometer	Thermometer at 6 AM	Thermometer at 10 AM	Highest	Lowest	Air Temperature	Modifier of the Clouds	General Appearance of the Weather	Direction of Wind	Rain	Dry	Wet	Miscellaneous Observations	Observations relating to Animals	Observations relating to Plants
17	F				9.20 - 30.02	63	64	70	46			Cumuli & Cirro-cumuli	Very fine Shower	NW	0.09	62	59			Lupinus pubescens. Podaleia palestina Ruscus aculeatus Peperomia major Achillea eupatoria Lupinus albus Sweet peas yellow Linnaea elegans agrostis Lupinus Onchitis Lathyrus Erysimum tricolor Fragaria Sedum spectabile Sedum portulacastrum Gnaphalium margaritaceum Epilobium halleri Phlox sp. adonidifolia Malva alba Scabiosa atropurpurea Aconitum napellus Actinomyces pedicularis Dracontopanax ciliatum Caltha palustris
18	F				9.20 - 04	63	63	74	54			Clear-Cumuli Fine		W	0.03	65	63			
19	T				9.20 - 18	63	64	67	53			Overcast Ciri	Very Fine	SW		69	54			
20	S				9.20 - 22	63	63	72	48			Clear-Cumuli Wind	Very fine	W		62	55			
21	M				9.20 - 28	63	62	71	49			Clear-Cumuli	Very fine	W		59	53			
22	T				9.20 - 36	63	66	73	41			Clear Cumuli Cirro cumuli	Very fine Rain	NW		57	52			
23	W				9.20 - 09	63	62	64	51			Fog.	Overcast Spelling Fair Rain	W	0.07	60	59			Japonica variegata Citharus indivisus Papaver argemone Oxyuris chysanthemoides Red beech
24	T				9.20 - 17	64	61	72	49			Overcast Spelling Fine		W	0.03	60	58			
25	F				9.20 - 16	64	64	76	55			Clear-Cumuli	Very fine	W	0.01	66	59			Scandix brachycarpa Lyngbya v. n. 222 Salt of Elton pine straw berries Lathyrus sativus wh. & blue Urtica dioica Vicia leuco-perma Mimodora elatensis Phalangium rufipes Agallia caerulea Veronica nigra Eleusine scabra Helianthus abrotanifolius Carnation
26	T				9.20 - 24	65	71	80	45			Clear	Very fine	W		66	60		Little webs.	
27	S				9.20 - 19	65	65	76	50			Clear-Cumuli	Very fine	N		64	57			
28	M				9.20 - 28	64	65	81	42			Clear Cumuli	Very fine	NW		61	55			
29	T				9.20 - 21	64	65	78	45			Clear.	Very fine	W		62	56		Not on hills	
30	W				9.20 - 20	63	66	77	53			Overcast	Rain Very fine	W	0.03	57	54			
31	T				9.20 - 26	65	65	73	49			Overcast Ciri	Very fine	W		62	58			

1.	1862	August	Days of the Week	Ther. tips & sets	Moon's age	Hour of Observation	Barometer	Mean of the Barometer	Thermometer in its vestibule	Thermometer against sky thermometer	on the point Highest Lowest Mean temperature	Modification of the Clouds	General appearance of the Weather	Dirct of the Wind	Rain	Dry	Wet	Miscellaneous Observations	Observations relating to animals	Observations relating to plants
1		F		9.20	30.20		65		80			Clear firm	Very fine	W		64	58			Polygonum. Cymosum Aster laevis Agrostemma G. Thago Lilia marta. Salvia viscosa Salpiglossis & framinea Salpiglossis tropaeopurpurea? Polygala chamaecrista Helianthus diversicatus Hibiscus vitifolia Valerianaella Dactylis ochrus Aster solidaginis Sedum canadensis amblyolepis setigera Rhabdium stellatum Panicum purpurascens Nigella damascena Althea canna Vicia grandiflora Linaria cathartica Dracopis virginiana Marechalis
2		T		9.20	- 11		67	61	79	47		Overcast.	Very fine	W		60	50			Glaucium luteum Corniola litorea Helianthus californicus Centropogon chinensis Ipomoea Helenium Polygonum cymosum Aspidistra Porrasteria securidaca Chinese Anemone Lycopodium formosense alba Alisma officinalis Alchemilla alpina Epiphanes virginica Polypodium scolopendriaefolium Astragalus latifolius Solidago Fleradrumma alba Actinomeris helianthoides Barrhausia rubra Solidago arguta Cultury the Oats Pocockia eratica Anemone pulchra Anemone white Statice gmelini Hesperaloe parviflora Gypsophila saxifraga
3		S		9.20	- 20		65	63	78	45		Clear. Cumuli	Very fine	W	0.16	62	56	Little webs.		
4		Th		9.20	- 17		65	67		45		Clear. Cumuli	Very fine	W		63	56			
5		T		10.	29.86		67		75				Went to London	SW						
6		W		9.20	- 90		65	61	70	50		Clear. Cumuli	Fair Showery.	W		60	55			
7		T		9.20	- 52		65	63	70	53		Cumuli Nimbri	High wind Heavy rain	SW	0.22	64	61			
8		F		9.20	- 69		63	64	69	50		Clear. firm	Showers Thunder Rain	SW	0.37	62	56	Peel June cutting apples		
9		T		9.30	- 88		63	61	68	52		Overcast firm	Very fine	W	0.10	59	55			
10		S		9.20	- 13		63	62	68	45		Overcast	Very fine	NW		59	55			
11		Th		9.20	- 25		63	64	67	53		Overcast	Fine	NW		60	56			
12		T		9.30	- 30		62	64	72	47		Overcast.	Fine	W		63	57			
13		W		9.20	- 15		64	65	71	50		Overcast	Very fine Rain	W		63	59			Zinnia multiflora rubra Blue Zinnias
14		T		9.20	29.95		64	62		54		Overcast	Showery	SW	0.28	60	59			Zinnia tenuiflora Bidens chilensis.
15		F		9.20	- 92		65		70			Overcast	Showery E S	W	0.11	63	60			Found a Helix Pomatia in the Hosley Chalk pit & brought it put it on the rock in the garden
16		T		9.20	- 92		64	65	67	50		Clear. Cumuli	Rain	NE	0.24	62	59	Little webs		

17062	August	Days of the Week	Time rises & sets	Moons age	Hour of Observation	Barometer	Mean of the Barometer	Thermometer in the vestibule	Thermometer out house of observation	Highest	Lowest	Mean temperature	Modification of the Clouds	General appearance of the Weather	Direction of the Rain	Dry	Wet	Rain or Frost	Miscellaneous Observations	Observations relating to Animals	Observations relating to Plants	
17	S			9.20	29.92		63	59	60	53			Overcast	Rain	NW	1.11	57	57	12 o'clock or 1 1/2			<i>Therm. americana cubra</i>
18	M			9.30	30.05		62	58	69	53			Overcast	Fine	W	0.34	57	55	1.47			<i>Silphium erythrocaulon</i>
19	T			9.30	- 12		62	67	75	45			Clear Cumuli	Very fine	W		63	58		Little webs		<i>Helianthus decapetalus</i>
20	W			9.30	- 14		63	68	75	49			Cumuli	Very fine	W		62	58		Little webs		<i>Althea cannabina</i>
21	T			9.30	- 11		64	69	77	52			Clear Cumuli	Very fine	W		64	59		Little webs		<i>Cotichicum autumnale</i> <i>Elsholtia cristata</i>
22	F			9.30	- 04		64	62	72	54			Clear Cumuli	Most beautif.	NW		60	55		Williams	<i>Solidago canadensis</i>	
23	F			9.30	- 28		64	64	72	43			Clear Cumuli	Most beautif.	W		58	53		Peach.	<i>Podolepis gracilis</i>	
24	S			9.20	- 38		62	62	79	46			Clear Cumuli	Most beautif.	W		63	57		Little webs		<i>Asplenium platyneuron</i> <i>Asplenium adnigrum</i> <i>Asplenium platyneuron</i> <i>Asplenium platyneuron</i>
25	M			9.20	- 40		63	66	77	43			Fibrous Cumuli	Most beautif.	NE		63	55		Little webs		<i>Red & White Mistletoe</i> <i>White Aster IV</i> <i>Yellow looks on the Elms</i>
26	T			9.20	- 70		63	62	63	45			Fibrous Cumuli	Most beautif.	NE		63	58		Little webs		<i>Calceola suavelens IV</i> <i>Lupinus nanus</i> <i>Thalictrum lanale</i>
27	W			9.20	- 04		64	63	75	54			Overcast	Fine	E		61	57		Smell London		<i>Horzoneria tigris tana</i> <i>Hieracium bifurcum</i>
28	T			9.20	- 22		60	62	76	44			M. J. Cumuli	Heavy dew	E		58	55		Little webs		<i>Chondrilla purpurea</i> <i>Aster spectabilis</i>
29	F			9.20	- 63		63	62	70	39			M. J. Cumuli	Very fine	E		58	56		Little webs		<i>Chondrilla purpurea</i> <i>Aster spectabilis</i>
30	T			9.20	- 27		61	62	73	41			Clear Cumuli	Very fine	N		58	55		Little webs		<i>Chondrilla purpurea</i> <i>Aster spectabilis</i>
31	S			9.20	- 20		63	65	71	51			Cirro-cumuli	Fine	E		60	56		Little webs		<i>Chondrilla purpurea</i> <i>Aster spectabilis</i>

3.01 on 9 days

17 1862	September	Days of the Week	Drizzles & Sleet	Moon's age &c	Hour of observation	Barometer	Mean of the Barometer	Thermometer in the vestibule	Thermometer at hour of observation	Highest	Lowest	Mean temperature	Modification of the Clouds	General appearance of the Weather	Direction of Wind	Rain	Dry	Wet	Rain at Cousins	Miscellaneous Observations	Observations relating to Animals	Observations relating to Plants
1	M				9.20	30.18		61	59	66	40		Overcast foggy	Fair	E		56	54		Balloon seen at Cousins 5.30 - descended near West Point Knapp Hall		Catalpa bungeifolia
2	T				9.20	29.96		63	60	72	52		Clear. Cumuli cini	Rain	E	0.05	60	59				Amaranthus caudatus red.
3	W				9.20	- 77		61	58	65	49		Clear. Cumuli nimbo	Rain Showery Fine	W	0.18	59	52				First Fig.
4	T				9.20	- 92		61	60	70	40		Clear. Cumuli nimbo	Fine	NE	0.02	59	54				Leaves falling
5	F				9.20	- 91		61	53	70	39		Overcast	Foggy Fair	E		55	53		Small London		Cypripedium virginicum
6	T				9.20	- 08		60	60	70	48		M.T. Clear. Cumuli nimbo	Very fine	NW		59	54				Aster dumosus Spectabilis
7	S				9.20	- 11		61	62	72	50		Clear. Cumuli nimbo	Very fine Showery	W		61	58		Garden meadow flooded at 11 by moon light as if it was a lake - E. S.		Aster nova boracensis Stri Lago bicolor
8	M				9.20	- 22		62	64	71	48		Overcast	Fine	NW		63	60				Calliopsis pedata
9	T				9.20	- 26		63	56	73	54		Overcast	Fine	NW		63	59				
10	W				9.20	- 06		64	56	63	54		Overcast	Heavy rain before 6	N	0.34	54	54	0.59			
11	T				9.20	- 20		60	55	68	35		Clear. Cumuli nimbo	Heavy dew	NW		54	50				
12	F				9.20	- 28		60	58	69	39		Clear. Fibus cini	Dew. Fine	W		56	53				Put 6 Helix pomatia brought by Mrs Jennings from Oberwesel on the Rhine, on Rock near the bridge.
13	S				9.20	- 16		61	63	70	53		Clear. Cumuli nimbo	Fine	W		60	57				
14	S				9.20	- 94			62		56		Overcast. Nimbo	Spitting Rain	SW	0.01	60	57				Variegated Cereus
15	M				9.20	30.08		63	64	78	52		Clear. Cumuli nimbo	Fine	E	0.06	63	60	0.11			
16	T				9.20	- 32		63	60	68	51		Overcast cum	Very fine	SE		58	55				The Canadian Strawberry in bloom & fruit.
																66						

1862	Days of the Week	Therms & Hrs	Hourly Observations	Barometer	Mean of the Barometer	Thermometer in the shade	Thermometer out of house	on the floor	High	Low	Mean temperature	Modification of the Clouds	General appearance of the Weather	Direction of the Wind	Rain	Dry	Wet	Rain in the bottle	Miscellaneous Observations	Observations relating to animals	Observations relating to plants
17	W		9.20	30.45		62	60	66	42			M: S. Overcast	Fine	NE		58	55				
18	T		11.	- 50		62						M: S. Overcast	Foggy. Very fine	E		54	52				White Colchicum
19	F		9.20	- 52		60	57	60	34			E. S.		E		61	50				
20	F		11.	- 52		61	63	73	46			Clear Cumuli	Fine	E		61	57				
21	S		9.20	- 42		60	64	71	49			Clear Cumuli	Fine	E		61	57				
22	M		11.	- 35		63						Overcast	Mist	NE		57	56				
23	T		9.20	- 34		62	59	63	55			M: S. Overcast	Fine	NE		55	51				
24	W		11.	- 35		61						Clear Cumuli	Fine	NE		56	53				
25	T		9.20	- 24		59	57	70	33			M: S. Cumuli	Overcast	N							
26	F		11.	- 20		61						Overcast	Fair								
27	S		9.20	- 10		60	60	71	44			Overcast	Heavy shower about 8.		0.13	60	59	0.18			
28	S		11.	- 00		61	60	68	49			Overcast	Fair			63	61				
29	M		9.20	- 00		62	65	69	40			Cumuli	Rain		0.06	62	61				
30	T		11.	- 05		64	62	68	53			E. S.	Fine		0.03	59	59	0.09			
			9.20	- 02		63	62	70	53			Overcast.	Misty-dew		0.03	59	59	0.09			
			11.	- 03		64							Fine			62	61	0.88			
			9.20	29.99		64	63	66	56				Fine		0.80	62	61	0.88			
			11.	- 90		64															
			9.20	- 94		64	62	67	53			Clear Cumuli	Fine	S	0.25	62	59	0.22			
			11.	30.03		63															
															1.93						
																</					

October	Days of the Week	Thermometer at day & night	Hourly observations	Barometer	Moisture of the Barometer	Thermometer in the vestibule	Thermometer at hour of observation	Highest	Lowest	Average temperature	Modification of the Clouds	General appearance of the Weather	Direction of the Rain	Dry	Wet	Rain or Corn	Miscellaneous Observations	Observations relating to animals	Observations relating to plants
1	W	9.20 11.	30.18 30.30	61	54	40					No. T. Clear Fine	N	0.06			0.07			
2	T	9.20 11.	- 26 - 26	62	63	65	50				overcast Fair	J	0.01	61	58				
3	F	9.20 11.	- 40 - 50	63	64	71	58				Clear Cumuli Fine	JW	0.01	63	64			Silene prostrata	
4	T	9.20 11.	- 55 - 50	63	60	63	40				overcast Fine	E		59	57				
5	S	10. 11.	- 55 - 36	62	60	60	50				No. T. Cumuli Very fine	E		58	56				
6	M	9.20 11.	- 23 - 10	62	62	70	50				No. T. Overcast Misty	E		59	58			a perfectly white little daisy on the lawn	
7	T	9.20 11.	- 16 - 27	61	53	46					Clear Cumuli Very fine	NE		51	40		windows dewed.		
8	W	9.25 11.	- 42 - 43	60	50	65	47				Overcast Foggy Very fine	SE	0.20	56	54				
9	T	9.20 11.	- 43 - 30	60	50	65	40				Clear-Cirri Very fine	E		57	55			First forced mushrooms.	
10	F	9.20 11.	- 24 - 16	59	57	72	44				No. T. Clear Heavy dew Thermostat light rain	J		55	55			Last of the peaches	
11	T	9.20 11.	- 01 - 30	61	58	64	51				Clear Cirrostrati Rain Fine	J	0.35	57	57				
12	S	9.20 11.	29.96 - 82	61	61	70	52				Overcast Rain	JW		61	60				
13	M	9.20 11.	- 95 99	60	57	63	49				Overcast-Cirri Fair Rain	J	0.20	56	53	0.95		Ranunculus laciniatus	
14	T	9.20 11.	30.03 29.94	61	62	71	53				Overcast Fine	J	0.05	61	58			amaryllis lutea	
15	W	9.20 11.	- 81 - 99	63	60	72	58				Clear-Cirro cumuli Fair-Rain	JW		66	63				
16	T	9.20	30.11 - 17	60	55	59	44				Clear-Cirrostrati Very fine	NW	0.00	52	50		windows streaming		

October 1862	Days of the Week	Sun rises & sets Monsage	Hour of Observation	Barometer	Mean of the Barometer	Thermometer in the Vestibule	Thermometer at height of observation	Highest	Lowest	Mean temperature	Modification of the Clouds	General appearance of the Weather	Direction of Wind	Rain	Try	Wet	Rain or Cossine	Miscellaneous Observations	Observations relating to animals	Observations relating to plants
17	F		9.20 11.	29.77 - 83		59 57	55 52	56 52	45 42		Overcast	High wind & rain	SW	0.13	54	54				
18	T		9.20 11.	- 82 - 74		57 55	52 52	52 42			Overcast	Rain	NE	0.26	55	52				
19	S		9.20 11.	- 85 - 26		54 55	49 55	57 36			Overcast	Rain High wind	NW	0.89	48	45		River our very high flood.		
20	M		9.20 11.	- 40 - 70		55 55	50 50		41		Clear Cirro cumuli	Wind Rain Fair Very fine	NW	0.84	49	45	2.17			
21	T		11	30.01		54		56					SW						Galastites tomentosa	
22	W		9.20 11.	29.66 - 59		55 55	55 55	59 40			Overcast	Rain Fair	SW	0.07	55	54				
23	T		9.20 11.	- 50 - 58		55 55	53 53	55 43			Cirro cumuli	Fine	W	0.03	51	47			Aster grandiflorus.	
24	F		9.20 11.15	- 76 - 94		54 54	48 54	54 33			Clear	Fine	NW		47	44		Windows closed		
25	T		9.20 11.	30.06 29.90		52 53	47 53		32		Overcast	Fine Rain	N	0.02	46	44		Windows threatening		
26	S		9.20 11.20	- 74 30.05		55 55	55 55		53		Overcast	Rain Fair	SW	0.31	54	54			Two coves on Lees perpetuated.	
27	M		9.20 11.	- 08 29.97		54 56	53 53	57 40			Overcast	Fine	SW	0.05	52	49	0.48			
28	T		9.30 11.	- 90 - 94		56 55	52 52	58 39			Overcast	Fine	NW	0.08	50	48				
29	W		9.30 11.	30.02 - 08		58 54	40 51	51 40			M: T Overcast	Fine	NW	0.04	45	44				
30	T		9.30 11.	- 04 29.89		51 53	36 52		28		M: T Overcast	Fog	N	0.05	34	34		Hygrometer water frozen		
31	F		9.30 11.	- 83 - 93		53 55	52 55	56 34			M: T Overcast	Rain Fair	NW SW	0.05	51	50				
														3.78						
														21						

1862 November	Days of the Week	Temperature & State of Sky	Hour of Observation	Barometer	Height of the Barometer	Thermometer in Shade	Thermometer at Hour of Observation	Highest	Lowest	Mean Temperature	Modification of the Clouds	General Appearance of the Weather	Direction of Wind	Rain	Dry	Wet	Rain or Crossed	Miscellaneous Observations	Observations relating to Animals	Observations relating to Plants
1	S		9.20	30.00		54	52	56	47		Overcast	Fair	E		50	50		a large circle round the moon at night		
2	S		9.20	30.04		56	55	58	40		Clear. Cirrocumuli	Fair	SE	0.20						
3	M		9.20	- 15		56	50	57	43		Overcast N.F.	Foggy	N		49	49				
4	T		9.20	- 03		52	50	57	37		Overcast Ciri	Fine	JW	0.02	50	48				
5	W		9.30	- 18		56	47		45		Overcast	Rain	SE	0.43	45	45				
6	T		9.30	- 20		54	40	46	35		N.F.	Overcast Fog	NE	0.11	38	38	0.51	a large circle round the moon in the morning		
7	F		9.30	- 31		51	36	44	31		N.F. Fibrous Ciri.	Foggy	NE	0.16	40	40				
8	T		9.30	- 43		49	37		27		N.F. Cirro-cumuli	Fine	NE	0.01	37	37				
9	S		9.30	29.99		52	52	54	36		Overcast	Rain: Wind	JW		51	49		a burst of 9 little grapes from my vineyard.		
10	M		9.30	- 55		52	47	54	36		Clear. Cirrocumuli Hail Shower	Fair	SW	0.11	46	43	0.28	brought in this day. Primrose		
11	T		9.30	- 61		44	32	47	26		Clear. Cirro-strati	White Frost Fine	NE	0.06	33	30			Wigwags & the same	
12	W		9.30	30.04		46	34	42	24		N.F. Clear	White Frost	NE		33	31			Windows dewed	
13	T		9.25	- 22		45	28	39	20		N.F. Clear	White Frost	NE		28	28			Windows dewed	
14	F		9.25	- 00		43	33		21		N.F. Fog	Fog	NE		31	30				
15	T		9.25	- 14		44	39	45	30		Cirro-cumuli	Fine	NE	0.04	40	38		Muscari racemosum		

[illegible]

December 62	Days of the week	Sun rises & sets	Moon age	Hour of Observation	Barometer	Mean of the Barometer	Thermometer in the shade	Thermometer at hour of observation	Highest	Lowest	Mean Temperature	Modification of the Clouds	General Appearance of the Weather	Direction of the Wind	Force of the Wind	Dry	Wet	Rain or Cozy	Miscellaneous Observations	Observations relating to Animals	Observations relating to Plants
1	M			9.20	29.80		45	44	49	30		Overcast	Fine	JW	0.04	42	42	0.17			
				11.	- 70		46														
2	T			9.30	- 67		46	43	47	35		Clear. Cirri	Fine	TE		43	42				
				11.	- 70		48					Cirrostratus									
3	W			9.20	- 80		48	45	51	38		Cirro cumuli	Fair	TE	0.01	45	43				
				11.	- 78		49					Cirrostratus									
4	T			9.20	- 89		48	47		43		Overcast	Fine	JW	0.04	46	45		a reddish color on the moon about 11.		
				11.	30.01		50														
5	F			9.20	- 10		51	50		45		Clear. Cirro cumuli	Light Rain	JW		50	49				
				11.	- 10		51														
6	T			9.20	- 09		53	55	57	48		Overcast	Wind Rain	J	0.08	53	52				
				11.	- 05		53														
7	S			9.30	- 14		53	51	56	42		Clear. Cirri	Fine	SW	0.18	51	50			Trees bare of leaves	
				11.	- 10		55														
8	M			9.30	- 10		53	47	45	38		Clear	Fine	NE	0.22	42	39	0.60			Windows steaming
				11.	- 24		52														
9	T			9.20	- 24		51	43		38		Cirrostratus	Fair	W		43	40			Primrose	
				11.	- 00								Rain								
10	W			9.20	- 07								Very fine		W						
				11.	- 05		51						Went to London								
11	T			9.30	- 10		50	45		34		Clear. Cirro cumuli	Fine	W	0.25	43	42				Windows steaming
				11.	29.95		50						Rain								
12	F			9.25	30.29		40	35		29		Cirri	White Frost	N	0.17	36	35				Windows steaming
				11.	- 38		47					E. S	Very fine								
13	T			9.25	- 13		40	46	48	32		Overcast	Wind Rain	JW	0.02	44	44				
				11.	- 23		48						Fair								
14	S			9.20	- 44		46	33	45	27		Clear	White Frost	NE	0.12	32	32				Windows steaming
				11.	- 48		46						Very fine						Northern Lights seen this evening		
15	M			9.20	-		46	42	45	30		Overcast	Fair	JW	0.01	40	39	0.62			
				11.	- 44		46														
16	T			9.30	- 40		45	41	52	31		Clear. Cumuli		JW		41	39				
					- 40		46														
1.14																					

1862 December	Days of the Week	Highs & Lows Thermometer	Hourly Observation	Barometer	Mean of the Barometer	Thermometer in the Vegetable	Thermometer in the House	Highest	Lowest	Mean Temperature	Modification of the Clouds	General Appearance of the Weather	Direction of the Wind	Rain	Dry	Wet	Rain or Comets	Miscellaneous Observations	Observations relating to Animals	Observations relating to Plants
17	W		9.30 11	30.40 - 45		46 40	50	53	39		Overcast	Fair Rain	SW		51	49				
18	T		9.30 11	- 43 - 09		47 40	44	53	31		Overcast	Rain High Wind	NW SW	0.13	42	41				Windows freezing
19	F		9.30 11	29.80 - 06		49 49	50		41		Clear-Cumuli	Wind	SW	0.03	49	44				
20	T		9.30 11	- 60 - 84		47 47	40		35		Overcast	Very high Wind	SW NW		49	46				Anemone Corymbosa in bloom
21	S		9.20 11	- 90 30.11		45 45	37		21		Clear-Cumuli	Fair Hail	NE		37	34				
22	M		9.20 11	- 23 - 19		44 39	37		31		Overcast	Fair Snow or hail at night	NE		37	35	0.10			
23	T		9.30 11.15	- 10 - 27		39 45	43		33		N.S. Overcast	Foggy Fair	NW	0.12						
24	W		9.30 11.15	- 32 - 33		45 46	45		33		Overcast Cumi	Heavy dew Fine	NW							
25	T		9.30 11.15	- 40 - 46		47 48	46		41		Clear	Most beautiful	NW							
26	F		9.30 11.30	- 41 - 44		48 49	47		39		Overcast	Very fine	SW					Diverging beams		
27	T		9.30 11.20	- 50 - 34		48 49	45		35		Overcast	Fair	W							
28	S		9.30 11.15	- 27 - 02		49 49	49		30		Clear-Cumuli	Most beautiful	W							The last of the grapes
29	M		9.30 11.20	29.70 - 35		49 49	48		44		Overcast	High Wind Rain	W	0.03			0.17			Windows closed
30	T		9.30 11.20	- 60 - 89		49 49	39		35		Clear	Very fine	W	0.13						
31	W		9.30 11.20	30.20 - 27		47 48	35		31		Clear	White frost	W	0.02				a little snow?	Brought in Laurestinus Anemone Cornu White Puss' lagoon China rose bush Erica herbacea Polyanthus Red Primrose	Windows string
													1.60							

1861
Stonington

Jan 1	7 days	77
Feb 11		2.31
March 16	—	2.26 $\frac{1}{2}$
April 7	—	98
May 9	—	1.59
June 11		1.16
July 16		6.01
Aug 7		53
Sept 14		2.97
Oct 6		1.09
Nov 13		4.07
Dec 8		1.29
125		25.03 $\frac{1}{2}$

1862
Stonington

Jan 1	8 ^{day}	1.09
Feb 9	—	1.62
March 10		5.94
Apr 17	—	7.06
May 11	—	2.58
June 7		1.47
July		1.83
Aug 10		2.06 $\frac{1}{2}$
Sept 11	—	1.86 $\frac{1}{2}$
Oct 15	—	2.54
Nov 12	—	1.61
Dec 9		1.79
Jan. 22		80 $\frac{1}{2}$

Howards
Climate of
London
vol. 2. 316.

	January	February	March	April	May	June	July	August	September	October	November	December
Mean of greatest heat by day	40.20	44.53	40.00	53.37	64.06	68.36	71.50	71.23	65.66	57.06	47.22	42.56
Mean of greatest cold by night	31.36	33.70	35.31	39.42	46.54	49.75	53.04	53.94	48.67	43.51	36.49	33.90
Difference or Solar variation	8.82	10.93	12.77	15.95	17.52	18.61	17.66	17.29	16.99	13.55	10.73	8.76
Mean temperature	36.34	39.60	42.01	47.61	55.40	59.36	62.97	62.90	57.70	50.79	42.40	38.71
Barometer ranges in mean	30.40 28.97	30.42 29.07	30.40 29.10	30.23 29.15	30.25 29.34	30.20 29.45	30.10 29.49	30.19 29.43	30.23 29.33	30.21 29.05	30.36 28.90	30.40 28.95
Difference	1.43	1.35	1.30	1.08	0.91	0.83	0.69	.76	.90	1.16	1.46	1.45
Mean height	29.79	29.874	29.87	29.814	29.812	29.90	29.80	29.854	29.883	29.736	29.725	29.745
Prevailing Winds	N to N	N to W	N to E	N to E	N to W	N to N	W to N	W to N	N to W	N to W	N to W	W
Proportionate evaporation	1.032	1.647	2.234	2.726	3.096	3.507	4.111	3.962	3.060	2.268	1.160	1.12
Mean of De Luce's Hygrometer	80	75	67	60	57	52	52	52	64	71	80	80
Average rain at surface	1.959	1.402	1.299	1.692	1.022	1.920	2.637	2.125	1.921	2.522	2.990	2.427
Average number of days on which rain falls	14.4	15.8	12.7	14	15.8	11.0	16	16.3	12.3	16.2	15.	1.77
Average of frosty nights in ten years	majority	3 ~ 22 11	5 ~ 23 12	6						on 4	11 or 12	15

Daniells
Essay
upon the
Climate of London

	January	February	March	April	May	June	July	August	September	October	November	December
Mean temperature	36.1	38	43.9	49.9	54	58.7	61	61.6	57.8	48.9	42.9	39.3
Mean highest	39.6	42.4	50.1		62.9	69.4	69.2	70.1	65.6	55.7	47.5	43.2
Mean lowest	32.6	33.7	37.7		45.1	48.1	52.2	52.9	50.1	42.1	38.3	35.4
Utmost range of the Therm.	52 11	53 21	66 24	74 29	70 33	90 37	76 42	82 41	76 36	68 27	62 23	55 17
Average power of the sun	4.4	10.1	16	28.1	30.5	39.9	25.0	33.1	32.7	27.5	6.8	5.4
Utmost intensity of its rays	12.	36	49	47	57	65	52.5	59.5	54	43	23.5	12.5
The cold produced by radiation from the earth	3.5	4.7	5.5	6.2	4.2	5.2	3.6	5.2	5.4	4.8	3.6	3.5
The greatest effect	10.	10.	10	14	13	17	13	12	13	11	10	11
The mean force of the vapours in atmosphere	0.234	.239	.272	.322	.354	.410	.468	.481	.432	.336	.286	.261
Dew point	34.3	34.9	39	43.5	46.1	50.7	54.5	55.3	52.3	44.8	40.5	37.6
Mean degree of dryness	1.8	3.1	4.9	6.4	7.9	8.	6.5	6.3	5.5	4.1	2.4	1.7
State of the air saturation	939	905	831	783	769	762	811	819	827	870	910	952
Average degree of greatest daily dryness	3.5	6.1	9.6	12.8	15.6	16.	13.7	12.4	11.1		4.7	3.3
Average degree of least saturation	878	816	715	651	597	597	658	677	702		845	888
Quantity of rain	1.403	0.746	1.440	1.786	1.853	1.830 2.516	1.453	2.193	2.073	2.400	2.426	
Amount of evaporation	0.413	0.733	1.408	2.290	3.286	3.760	3.293	3.527	2.620	1.488	0.770	0.516
Height of the barometer	29.921	30.067	29.843	29.881	29.898	30.020	29.874	29.891	29.931	29.774	29.776	29.693
Its mean range.	1.60	1.36	1.26	1.11	1.09	0.64	0.79	0.73	0.88	1.38	0.92	1.13

The following Table has been calculated from Observations made in the Parish of Cobham Surrey during the 8 Years from 1833 to 1840.

	January	February	March	April	May	June	July	August	September	October	November	December	
Thermometer	Utmost range	60	60	66	85	86	93	98	94	82	79	66	63
	10 below zero	14	16	17	23	33	33	32	27	21	16	4	
	Mean temperature	38,38	39,84	42,02	46,25	55,25	61,31	63,00	64,83	56,32	49,87	43,64	38,90
	Mean highest	52,6	54,7	60,1	71,3	79,8	88,5	89,2	85,8	76,0	68,4	58,8	57,5
	Mean lowest	14,6	20,6	20,5	23,0	30,3	37,8	39,2	36,7	32,3	25,8	21,8	18,8
	Difference Solar variation	38,	34,1	39,6	48,3	49,5	50,7	50,	49,1	43,7	42,6	37,	38,7
Barometer	Utmost range	30,83	30,62	30,68	30,53	30,62	30,42	30,47	30,48	30,58	30,71	30,48	30,66
		28,97	28,62	28,70	29,02	29,42	29,29	29,37	29,11	28,99	28,98	28,67	29,04
	Mean height	29,986	29,819	29,915	29,999	29,960	30,008	30,039	30,023	31,182	29,997	29,822	30,038
	Mean highest	30,59	30,44	30,47	30,41	30,42	30,35	30,36	30,35	30,34	30,50	30,38	30,50
	Mean lowest	29,17	29,04	29,24	29,34	29,54	29,55	29,57	29,42	29,26	29,24	29,00	29,28
	Difference	1,42	1,40	1,23	1,07	,88	,80	,79	,93	1,08	1,26	1,38	1,22
Rain	Greatest quantity	4,08	4,09	3,58	3,10	2,31	2,65	5,47	3,50	5,74	4,77	3,94	3,53
	Least quantity	0,26	0,37	0,32	0,21	0,60	0,93	0,30	0,83	0,90	0,24	1,60	0,20
	Mean quantity	1,747	2,071	1,417	1,231	1,196	1,918	2,212	1,800	2,911	2,242	2,778	1,643
	Greatest No. of days	26	23	23	22	18	22	20	15	25	21	23	25
	Least No. of days	9	10	8	4	4	11	6	3	12	8	11	7
	Mean number	16,	16,7	15,3	12,8	11,8	14,5	13,3	10,8	17,	14,6	17,2	15,3

The barometer is in a vestibule. No corrections of any kind have been made in registering the barometer.

The mean temperature, mean highest and mean lowest, have been calculated from observations made on registering thermometers hung on a post, two feet eight inches from the grass, facing the north, and in no way sheltered.

The rain was measured by Howard's rain gauge, which is placed near the post on which the thermometers hang, about six inches from the ground.

The following Table has been calculated from Observations made in the Parish of Cobham Surrey during the 15 Years from 1826 to 1840

		January	February	March	April	May	June	July	August	September	October	November	December
The monthly temperature	Utmost range	60 10 below zero	62	74	85	86	93	98	94	83	79	66	63
	Mean	36.65	39.46	43.05	47.28	53.54	60.92	63.38	61.71	56.57	50.67	44.07	39.23
	Mean highest	51.4	56	62.6	71.1	80.6	86.6	89	85.6	76.5	64.3	59.6	55.9
	Mean lowest	14	19.6	21.5	24.3	29.8	37.6	40	38.1	32.7	26.8	21.0	19.5
	Difference of variation	37.4	36.4	41.1	46.8	50.8	49.0	49	47.5	43.8	37.5	38.6	36.4
Barometer	Utmost range	30.83	30.62	30.68	30.59	30.62	30.51	30.50	30.48	30.60	30.71	30.58	30.70
	Mean height	29.973	29.999	29.980	29.931	29.954	30.016	30.024	29.651	30.636	30.023	29.857	29.927
	Mean highest	30.51	30.46	30.46	30.38	30.38	30.35	30.35	30.35	30.38	30.48	30.42	30.52
	Mean lowest	22.58	29.15	29.25	22.65	29.54	29.57	29.58	29.45	29.35	29.31	29.14	29.28
	Difference	7.96	1.31	1.21	7.73	.84	.78	.77	.90	1.03	1.17	1.28	1.24
Rain	Greatest Quantity	4.69	4.09	3.58	5.63	3.03	3.18	5.47	4.14	5.74	4.77	3.94	3.53
	Least Quantity	.26	.29	.24	.21	.60	.48	.30	.83	.63	.24	1.01	.28
	Mean Quantity	1.688	1.676	1.469	1.729	1.629	1.854	2.408	2.100	3.049	2.368	2.310	1.848
	Greatest No of days	26	23	23	25	18	23	23	21	25	23	23	25
	Least No of days	7	3	4	4	3	4	4	3	8	7	9	7
	Mean Number	13	13.7	13.4	13	10.9	14.1	13.4	12.5	15.2	14.6	15.2	15.6

The barometer is in a vestibule. No corrections of any kind have been made in registering the barometer.

The mean temperature, mean highest and mean lowest, have been calculated from observations made on registering thermometers hung on a post, two feet eight inches from the grass, facing the north, and in no way sheltered.

The rain was measured by Howard's rain gauge, which is placed near the post on which the thermometers hang, about six inches from the ground.

