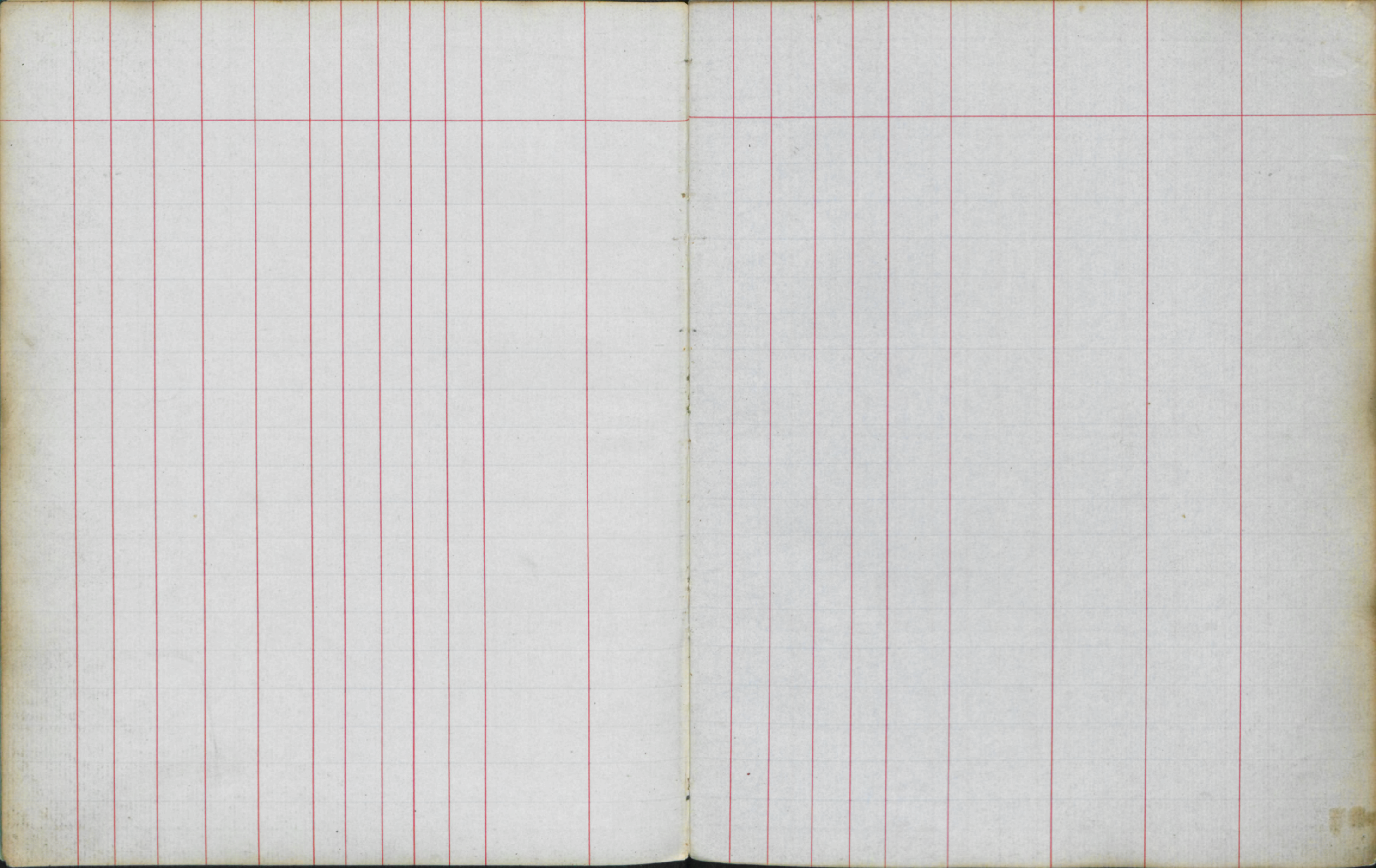
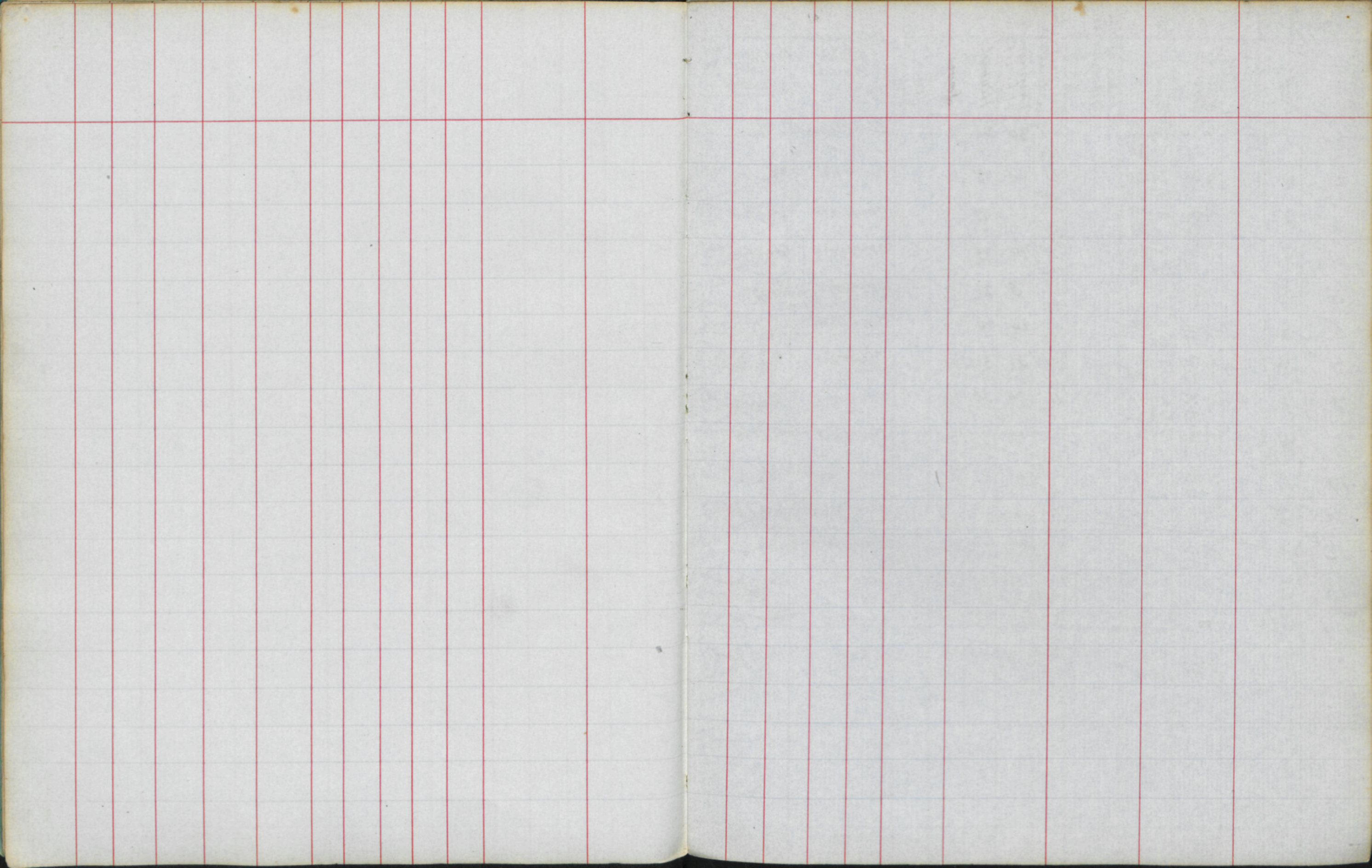


1867

COB

11





January 1867	Days of the week	Sun rises Sets Moon Age	Hour of Observation	Barometer	Mean of the Barometer	Thermometer in shade	Thermometer at hour of observation	Highest	Lowest	Mean Temperature	Modification of the Clouds	General appearance of the Weather	Direction of the Wind	Rain	Dry	Wet	Mr. Faby's Gauge	Miscellaneous Observations	Observations relating to animals	Observations relating to plants
1	T		9.30 11	29.44 50		44 43	30	24	21		Clear Cumuli	Fine	NE		29	28		White frost a little snow in the night		
2	W		9.30 11	29.40 39		31 40	24	30	14		Overcast	Fair	NE		24	24		Thawing very fast		
3	T		9.30 11	- 34 - 81		34 38	22	33	3		Overcast	Fair	NE					Snow 8 inches deep by 11 past on the lawn		
4	F		9.30 11	- 96 30-3		30 35	12	33	9		Overcast	Fair	NE		10	10		Snow on the ground		
5	T		9.30 11	- 8 - 10		32 29	5	21	3 below Zero		Overcast	Foggy	E		2 below Zero	2 below Zero		Snow on the ground		
6	S		9.30 11	- 10 30		40 40	20	20	5		Overcast		SE		19	19		Thawing		
7	M		9.30 11	- 1 29.86		36 40	51	51	40		Overcast	Rain	SW	80 Snow drain	50	50	86 mutual Snow + rain	Snow nearly gone River out 20 inches deep	across the Road by the Bridge	
8	T		9.30 11	29.16 28.94		45 40	52	56	47		Overcast	Rain	SW	24	52	51		Very high wind & Rain		
9	W		9.30 11	29.25 20		49 40	43	53	38		Overcast	Rain	SW	2	43	42		Snow all gone		
10	T		9.30 11	- 1 24		40 40	41	47	30		Clear Cumuli	Fine	N	34	40	30				
11	F		9.30 11	- 60 76		40 46	35	42	25		Clear Cumuli	Very fine	NE		34	33				
12	T		9.30 11	- 87 80		44 42	32	42	18		Clear Cumuli	Fair	NW		31	30		Snow a flake White frost		
13	S		9.30 11	- 67 75		40 40	26	35	12		Clear	Very fine	NE		25	25		Windows so cold could not be through them	Ground covered with Snow	
14	M		9.30 11	- 87 92		38 38	15	31	7		Clear	Very fine	E		17	17		Snow still on the ground		
15	T		9.30 11	- 90 30.1		35 35	22	29	12		Clear	Very fine	E		22	21		Windows ice	Snow on the ground	

January 1867	Days of the week	Supplies Set Moon's age	Hour of Observation	Barometer	Mean of the Barometer	Thermometer in the vestibule	Thermometer at hour of observation	Highest	Lowest	Mean Temperature	Modification of the clouds	General appearance of the weather	Direction of the Wind	Rain	Dry	Wet	Wet Thermometer Gauge	Miscellaneous Observations	Observations relating to Animals	Observations relating to plants
16	W		9.30 11	30. 29.90		35 35	32	32	20		Clear Cumuli	Very fine	NW		33	33		Snow still on the ground		
17	T		9.30 11	-90 -60		35 35	28	37	12		Overcast	Fair	NE		27	27		Snow still on the ground		
18	F		9.30 11	-50 -50		35 35	28	32	21		Overcast	Snowing	NE		25	25		Ground covered with snow		
19	T		9.30 11	-70 -92		35 35	27	32	11		Overcast Thick fog	the whole day	NE		25	25		ground covered with snow		
20	S		9.30 11	-96 -97		36 36	31	32	20		Overcast	Fair	E		29	29		ground covered with snow		
21	M		9.30 11	-93 -93		36 36	30	33	25		Overcast	Fair	E		28	28		High wind snow on the ground		
22	T		9.30 11	-96 30.10		36 35	26	33	22		Overcast	Fair	E		23	23		Snow still on the ground	Snow on the cedars full	
23	W		9.30 11	30.10 29.8		35 39	51	51	24		Overcast	Foggy	SW		48	48		Thawing fast		
24	T		9.30 11	-74 -63		42 45	54	54	45		Overcast	Rain	SW	24 melted snow	52	52	85	Snow all gone		
25	F		9.30 11	-63 61		46 48	48	56	37		Overcast	Foggy Rain	NW		47	47				
26	T											Fair	SW					Went to London		
27	S		9.30 11	29.90 30.2		51 51	55	55	35		Overcast	Fair	SW	19	54	53				
28	M		9.30 11	30.13 -3		52 52	52	56	40		Overcast	Fair	SW	2	51	49	23			
29	T		9.30 11	-7 -13		53 51	40	35	33		Clear Cumuli	Very fine	NW		48	44		High wind		
30	W		9.30 11	30 29.96		52 52	51	53	44		Overcast	Fair	W		50	40				
31	T		9.30 11	29.70 30.20		53 51	43	53	35		Clear	Very fine	NW		42	30		High wind		

February 1869	Days of the week	Uses of the thermometer	Hour of observation	Barometer	Mean of the barometer	Thermometer in the shade	Thermometer at hour of observation	Highest	Lowest	Mean temperature	Modification of the clouds	General appearance of the weather	Direction of the wind	Rain	Sky	Wet	No. of days in the year	Miscellaneous observations	Observations relating to animals	Observations relating to plants
1	F		9.30 11	30.30 -21	53 51	40	49	30			Overcast	Fair	S	46	46	45				
2	T		9.30 11	-20 -40	53 50	47	53	22			Clear Cumuli	Very fine	N		29	30		Went to London		
3	S		9.30 11	-43 -40	53 50	47	53	20			Clear Cumuli	Very fine	N		39	30		White frost		
4	M		9.30 11	-41 29.00	51 51	40	40	25			Overcast	Rain	SW	3	47	46	51			Two explosions about 3 in the morning
5	T		9.30 11	-66 -60	50 49	46	50	34			Clear Cumuli	Very fine	NW		45	43				
6	W		9.30 11	-20 -5	51 51	49	53	30			Clear Cumuli	Very fine	SW	20	40	46		High wind very high and dark in night		
7	T		9.30 11	-21 -70	50 40	42	51	33			Clear Cumuli	Very fine	NW		41	40		High wind		
8	F		9.30 11	-64 -53	40 50	54	54	30			Overcast	Fair	SW	12	53	52		High wind		
9	T		9.30 11	-60 30-2	52 51	50	56	41			Clear Cumuli	Very fine	W		40	46				
10	S		9.30 11	-10 -14	52 52	51	54	42			Overcast	Fair	SW	19	50	40				
11	M		9.30 11	29.96 30.17	53 52	42	54	36			Clear Cumuli	Very fine	NW	22	42	39	70	Windows dewed		
12	T		9.30 11	-30 -33	52 52	52	52	39			Overcast	Fair	NW		50	49				
13	W		9.30 11	-43 -47	54 53	40	53	44			Overcast	Fair	W		46	45		Heavy dew Windows dewed		
14	T		9.30 11	-40 -46	53 52	47	53	44			Overcast	Foggy	SE		45	45		Spitting		
15	F		9.30 11	-40 -10	53 53	52	54	30			Clear Cumuli	Fine	S		51	47				

February 1869	Days of the week	Supplies: Sets Message	Hour of observation	Barometer	Mean of the Barometer	Thermometer in the vestibule	Thermometer at head of stairs	Highest.	Lowest	Mean Temperature	Modification of the Clouds	General appearance of the weather	Direction of the Wind	Rain	Sky	Wet	Wet by the gauge	Miscellaneous Observations	Observations relating to Animals	Observations relating to Plants
16	T		9.30 11	30.10 29.91		53 53	44	56	45		Clear cumuli	Very fine	SW	21	51	50				
17	S		9.30 11	- 97 30.08		55 55	51	58	41		Overcast	Foggy	SE	35	49	40		Heavy dew		
18	M		9.30 11	- 30 30.50		55 54	40	57	41		Overcast	Fog	NE	.1	46	46	62	Heavy dew		
19	T		9.30 11	30.54 - 50		54 53	40	50	40		Overcast	Fog	SE		46	46		Heavy dew		
20	W		9.30 11	29.40 - 57		54 54	50	52	42		Clear Cirro cumuli	Fine	NW		50	57				
21	T		9.30 11	30.64 - 65		54 53	50	57	40		Overcast	Fair	NW		47	40				
22	F		9.30 11	- 64 - 60		54 53	50	52	42		Overcast	Fine	W		49	47				
23	T		9.30 11	- 54 - 60		54 54	51	52	48		Overcast	Fine	NW		49	46				
24	S		9.30 11	- 50 - 44		44 43	49	54	34		Overcast	Fair	NW		47	46				
25	M		9.30 11	- 36 - 36		53 51	45	54	35		Clear Cirro cumuli	Very fine	NW		44	42				
26	T		9.30 11	- 20 - 11		53 52	44	52	41		Overcast	Foggy Rain	NE	.1	42	42				
27	W		9.30 11	- 34 - 40		49 40	45	45	33		Overcast	Fair	NE		41	39				
28	T		9.30 11	- 20 - 30		50 49	40	42	35		Overcast		NW		41	40				

1867

1867	Days of the week	Sun rises & sets	Hour of observation	Barometer	Mean of the barometer	Thermometer in the vestibule	Barometer at foot of observation	Highest	Lowest	Mean temperature	Modification of the clouds	General appearance of the weather	Direction of the wind	Rain	Dry	Wet	No. of days gauge	Miscellaneous Observations	Observations relating to animals	Observations relating to plants
1	F		9.30 11	30.46 -60		40 47	39	47	22		Clear Cumuli	Fair	NE	-	36	35		White frost foggy		Crocus
2	T		9.30 11	-70 -80		46 45	39	43	20		Clear Cumuli	Fine	E		36	35				
3	S		9.30 11	-80 -76		45 44	38	43	25		Clear Curri	Very fine	E		36	34				
4	M		9.30 11	-66 -67		45 45	41	40	34		Overcast	Fine	E		40	46				
5	T		9.30 11	-47 -20		46 46	41	47	33		Overcast	Spitting	NZ		39	30				
6	W		9.30 11	-12 29.94		47 46	39	49	20		Overcast	a little snow falling	E		37	35				Sun eclipsed 8.45
7	T		9.30 11	29.83 -74		45 44	36	42	20		Clear Cumuli	Fair	E		33	32		ground covered with snow		
8	F		9.30 11	29.74 -70		44 44	40	44	38		Clear Cumuli	Fine	NE	9 melted snow	36	35				
9	T		9.30 11	-66 -65		44 45	42	45	25		Clear Cumuli	Fair	SE		30	35		white frost		
10	S		9.30 11	-44 -20		46 45	45	46	35		Overcast	Thick fog	SE	40	44	44		wind trace in the night		
11	M		9.30 11	-60 -72		46 44	38	46	35		Overcast	Foggy	E	5	37	36	55			
12	T		9.30 11	-80 -25		46 46	35	45	31		Overcast	Snowing	SE	9	34	34				
13	W		9.30 11	-94 30.1		44 42	34	38	20		Overcast	Fair	E		31	31				
14	T		9.30 11	29.70 -64		43 43	30	39	31		Overcast	Snow + rain	E	26 melted snow	34	34		Ground covered with snow		
15	F		9.30 11	-73 -83		42 42	35	38	30		Overcast	Snowing	E	12 melted snow	34	34		snow still on the ground		
																			Numerous ruts from Sir R. Fredericks tree town.	

1867	March	Days of the week	Time rise & sets	Hours of observation	Barometer	Mean of Barometer	Thermometer in vestibule	Thermometer in shade	Highest	Lowest	Mean Temperature	Modification of the Clouds	General Appearance of the Weather	Direction of the Wind	Rain	Dry	Wet	Mr. Deane's Gauge	Miscellaneous Observations	Observations relating to Animals	Observations relating to Plants
16	J			9.30 11	29.93 30-2		42 41	35	41	22		Clear Cirro Cumuli	Very fine	NE	3	34	33		White frost Snow still on the ground		
17	S			9.30 11	30-2 -11		41 41	35	44	20		Clear Cumuli	Very fine	E		34	34		a little snow still on the ground	The peas descended from some foreigner, and old building near Glastonbury came up in pots	
18	M			9.30 11	29.70 -62		41 40	35	38	29		Overcast	Snowing	SE	1	31	31	61 melted snow	Snow still on the ground		
19	T			9.30 11	-60 -51		41 41	36	36	31		Overcast	Snow & rain	E	6	35	35		Snow still on the ground in places		
20	W			9.30 11	30.1 -7		41 42	37	38	32		Overcast	Fair	E	20	36	35		Snow on the hills		
21	T			9.30 11	29.80 91		43 43	41	42	25		Clear Cumuli	Very fine	E		38	37		Snow on the hills		
22	F			9.30 11	29.92 -70		44 43	41	46	31		Overcast	Snow in the night	SE	8	39	39		Ground partly covered with snow		
23	J			9.30 11	29.88 -90		46 45	51	53	48		Overcast	Fair	SE	7	44	44		Snow gone		
24	S			9.30 11	-60 -67		54 55	54	57	45		Clear Cirro cumuli	Very fine	SW	10	54	53				
25	M			9.30 11	-75 -84		53 53	44	61	42		Overcast	Fair	SW		53	52	63			
26	T			9.30 11	-63 -52		54 53	54	55	44		Clear Cumuli	Very fine	W	20	53	50		High wind		
27	W			9.30 11	-58 -53		54 53	51	59	40		Overcast	Fair	SW	1	59	58				
28	T			9.30 11	-50 -54		54 53	51	59	33		Clear Cumuli	Very fine	W		45	44				
29	F			9.30 11	-64 -72		53 51	50	56	32		Clear Cumuli	Very fine	SW		47	44				
30	J			9.30 11	-81 -89		52 51	50	54	33		Overcast	Rain & Hail	SW		48	44		Thunder Lightning		Scilla romana Fritillaria persica Fritillaria Berberis Darwini Daphne mezereum
31	S			9.30 11	-90 30.24		51 48	47	54	34		Clear Cirro cumuli	Very fine	N	-9	44	40				

1864
April

	Day of the Week	Time of observation	Barometer	Mean of the Barometer	Thermometer in the vestibule	Thermometer at hour of observation	Highest	Lowest	Mean temperature	Modification of the Clouds	General appearance of the weather	Direction of the Wind	Rain	Dry	Wet	Net barometer gauge	Miscellaneous Observations	Observations relating to Animals	Observations relating to Plants
1	M	9.30 11	30.50 - 54		50 49	53	54	26		Clear Cumuli	Very fine		31	50	45				
2	T																		
3	W																		
4	T																		
5	F																		
6	S																		
7	S																		
8	M																		
9	T																		
10	W	9.30 11	29.94 30.5		56 53	53	57	39		Clear Cumuli	Fine	W	14	50	48	40			
11	T	9.30 11	29.71 60		54 53	51	58	41		Clear Cumuli	Fine	NW		40	45		High wind		
12	F	9.30 11	30.10 - 32		53 52	57	57	31		Clear Cumuli	Very fine	W		51	47				
13	S	9.30 4+	30.26 - 12		54 53	48	51	39		Overcast	Rain Fair	W	13	47	47				
14	S	9.30 11	- 5 29.74		54 54	52	56	46		Overcast	Rain	SW	5	51	50		High wind		
15	M	9.30 11	- 90 - 64		54 54	53	54	39		Clear Cumuli	Fine	NW	15	52	50	39			

1867	April	Days of the week	Supposed sets hours age	Hour of observation	Baromet	Mean of the baromet	Thermometer in the vestibule	Thermometer hour of observation	Highest	Lowest	Mean Temperature	Modification of the Clouds	General appearance of the Weather	Direction of the Wind	Rain	Day	Wet	No. of days' gauge	Miscellaneous Observation	Observation relating to Animals	Observations relating to plants
16	T			9.30 11	29.64 -89		54 54	49	59	42		Overcast	Rain Fair	S W		47	46				
17	W			9.30 11	-80 -94		56 56	57	50	47		Overcast	Foggy Fine	SW	2	54	52			Nightingales heard	
18	T			9.30 11	-94 30.5		56 57	52	53	44		Clear Cumuli	Very fine	SW		59	56				
19	T			9.30 11	-5 29.77		54 58	61	66	50		Clear cumuli	Very fine	SW		58	56				
20	T			9.30 11	29.70 -50		60 59	60	67	51		Overcast	Rain Fine	SW		59	58			Cuckoo heard martins	
21	S			9.30 11	-51 -53		59 58	50	60	37		Clear Cumuli	Very fine	NW	31	59	56		High wind		
22	M			9.30 11	-46 30.16			53	54	38		Clear Cumuli	Very fine	NW	.6	52	46	39			
23	T			9.30 11	29.75 -92		56 57	57	59	48		Clear Cumuli	Very fine	W	10	58	55		Black cloud NE		
24	W			9.30 11	-90 -85		59 58	62	67	46		Clear Cumuli	Very fine	SW	.6	58	54		High wind		
25	T			9.30 11																	
26	T			9.30 11																	Borago laxiflora Heliofila Fuchsia Japonica Jussiaea rostrata Berberis pinnata Ficus Kipshum
27	T			9.30 11	29.83 -70		55 56	66	64	41		Overcast	Fair Haze & rain a part of	S	.19	52	52			at 7 a beautiful sky clouds tipped with gold	
28	S			9.30 11	-68 -99		58 55	56	62	31		Overcast	Fine	SE	1	51	48		Little webs		
29	M			9.30 11	-90 30.2		57 55	63	66	34		Clear Cumuli	Very fine	SE		50	47				
30	T			9.30 11	-1 29.84		56 55	56	68	38		Overcast	Rain	SW	.5	55	54		Thunder thigh.		

May	Days of the week	Sun rises Sets Moon sets	Hour of Observation	Barometer	Mean of the Barometer	Thermometer in the vestibule	Thermometer at the hour of observation	Highest	Lowest	Mean Temperature	Modification of the clouds	General appearance of the weather	May 9 1867	Rain	Dry	Wet	No. of Foggy gauge	Miscellaneous Observations	Observations relating to Animals	Observations relating to Plants
1	W		9.30 11	29.94 30.6		57 56	55	65	42		Clear Cumuli	Fine		6	53	51				
2	T		9.30 11	30.14 17		57 56	65	65	33		Clear Cumuli	Very fine	W		58	55		Heavy dew		
3	F		9.30 11	-24 -25		57 57	63	73	46		Clear Cumuli	Very fine	S		40	45		Heavy dew		
4	T		9.30 11	-25 -26		57 59	66	75	42		Clear Cumuli	Very fine	SW		62	58		Streamers		
5	S		9.30 11	-20 -14		60 60	67	75	42		Clear Cumuli	Very fine	SE		60	54		Streamers		
6	M		9.30 11	-10 -8		64 63	74	79	50		Clear Cumuli	Very fine	SE		69	62	64			
7	T		9.30 11	-10 -14		67 67	77	85	59		Clear Cumuli	Very fine	SW		73	69				
8	W		9.30 11	-14 -5		67 68	80	88	48		Clear	very fine	SE		74	70		Heavy dew		
9	T		9.30 11	-5 -10		60 67	69	80	45		Clear Cumuli	very fine	W		64	66				
10	F		9.30 11	-10 -2		67 67	76	77	61		Clear Cumuli	Very fine	SW		68	64				
11	T		9.30 11	29.84 60		60 66	66	68	52		Clear Cumuli	Very fine	W	15	64	60		Thunder lightning about 3		
12	S		9.30 11	29.80 68		60 62	66	71	57		Overcast	Rain	E	4	55	54				
13	M		9.30 11	29.56 72		63 61	53	61	46		Overcast	Foggy Fair	E	3	49	47	24			
14	T		9.30 11	29.86 88		60 56	50	58	42		Overcast	Fine	E	8	48	46				
15	W		9.30 11	-80 98		56 55	48	58	41		Overcast	Foggy	SE		44	42				

1867 May	Days of the week	Time and to Moon age	Hour of Observation	Barometer	Mean of the barometer	Thermometer in the vestibule	Thermometer at the hour of observation	Highest	Lowest	Mean for period	Modification of the Clouds	General Appearance of the Weather	Direction of the Wind	Rain	Dry	Wet	No. of Inches of Rain	Miscellaneous Observations	Observations relating to Animals	Observations relating to Plants
16	Tu		9.30 11	30.6 -14	5	55 53	55	55	40		Overcast	Fair	NE		40	45		Heavy cloud from N E 72 o'clock		
17	W		9.30 11	-14 -23		54 53	62	62	37		Clear Cumuli	Very fine	NW		51	54				
18	T		9.30 11	-24 20		55 54	61	63	32		Clear Cumuli	very fine	SE		56	54		Little webs		
19	S		9.30 11	-10 -10		56 66	70	76	39		Clear Cumuli	very fine	W		63	50		Little webs		
20	M		9.30 11	29.93 -92		50 50	61	73	49		Clear	Fine	NW	.9	50	56	16			
21	T		9.30 11	-83 -74		50 50	52	67	40		Overcast	Rain	NE		51	50				
22	W		9.30 11	-96 30.8		50 54	50	52	31		Overcast	Fine	NW	16				Iron & steel		
23	T		9.30 11	-20 -18		54 52	47	56	29		Overcast	Fair	NE		45	41				
24	W		9.30 11	-26 -26		53 51	50	56	26		Clear Cumuli Overcast	Fair	NE		45	42				
25	T		9.30 11	-26 -19		53 52	56	64	46		Clear Cumuli	Very fine	SE		54	53				
26	S		9.30 11	-1 29.94		54 52	50	59	47		Overcast Rain	Fair	SE	.27	54	52				
27	M		9.30 11	-76 -76		50 50	60	71	40		Clear Cumuli	Fine	SW	5	59	56	52			
28	T		9.30 11	-76 -93		50 59	62	70	46		Clear Cumuli	Fine	SW	4	59	56				
29	W		9.30 11	30.1 -10		63 62	71	73	50		Clear Cumuli	Fine Showers	SW		65	62				
30	T		9.30 11	30.2 -12		64 63	69	80	51		Clear Cumuli	Very fine	SW		64	66		Little webs		
31	W		9.30 11	30.20 -25		64 62	51	75	43		Clear Cumuli	Fine	SW		50	56		Little webs		

1864 June	Days of the week	Sun rises Moon sets Ltz	Hour of Observation	Barometer	Mean of the Barometer	Thermometer in the shade at 10 o'clock	Thermometer at 10 o'clock at 10 o'clock	Highest	Lowest	Mean Temperature	Modification of the Clouds	General appearance of the weather	Direction of the Wind	Rain	Dry	Wet	Mr. Peabody's Gauge	Miscellaneous Observations	Observations relating to animals	Observations relating to plants
1	T		9.30 11	30.26 -	64 64	71	70	44			Clear Cumuli	Very fine	SW		68	63		Little webs.		
2	S		9.30 11	28 -10	67 66	76	83	46			Clear	Very fine	SE		70	65		Little webs		
3	M		9.30 11	30.3 29.90	69 66	81	88	55			Overcast		NE	.85	58	57	.85	Thunder Lightning Rain in the night		
4	T		9.30 11	30.1 -10	65 64	64	66	46			Clear Cumuli	very fine Showers	NW		62	58				
5	W		9.30 11	-10 -4	64 61	56	70	45			Overcast	Rain	S	17	56	56				
6	T		9.30 11	29.99 -93	63 62	63	63	51			Clear Cumuli	Fine	SW	35	60	57				
7	F		9.30 11	-90 88	64 62	62	71	50			Clear Cumuli	Fine	SW		69	67				
8	T		9.30 11	30.3 -24	64 64	60	69	46			Clear Cumuli	Very fine	N	16	67	64				
9	S		9.30 11	30.23 -29	63 62	64	70	49			Clear Cumuli	very fine	NW		61	58		Fine sunset		
10	M		9.30 11	30.40 -43	63 64	72	78	56			Clear	very fine	W		68	64	70			
11	T		9.30 11	30.43	64 67	77	85	46			Clear Cumuli	Very fine	S		72	68		Little webs		
12	W		9.30 11	30.33 -26	69 69	79	89	66			Clear Cumuli	Very fine	NW		76	72				
13	T		9.30 11	-25 -25	70 66	61	86	52			Overcast Rain	Fair	SW	4	59	58				
14	F		9.30 11	-24 -7	66 64	63	66	49			Clear Cumuli	Fine	SW		60	56				
15	T		9.30 11	-1 12	64 61	58	69	48			Clear Cumuli	very fine			56	53				

1864 June	Days of the week	Sun rises & sets Moons age	Hour of observation	Barometer	Mean of the Barometer	Thermometer in the shade	Thermometer at hour of observation	Highest	Lowest	Mean Temperature	Modification of the clouds	General appearance of the weather	Wind	Rain	Day	Wet	Air Therm. Gauge	Miscellaneous Observations	Observations relating to Animals	Observations relating to Plants
16	S		9.30 11	30.19 - 21		62 60	57	64	40		Overcast	Fair	NW		55	54				
17	M		9.30 11	- 25 - 20		62 60	61	66	46		Clear cumuli	Fine	NW	L	57	54	10	Little birds		
18	T		9.30 11	- 30 - 23		62	69	70	44		Clear cumuli	very fine	NW NW		64	59				
19	W		9.30 11	- 23 - 20		65 64	66	78	56		overcast	Foggy Fine	SE		62	60				
20	T		9.30 11	- 14 - 17		64 63	53	70	65		Overcast	Foggy	NW		60	50				
21	F		9.30 11	- 19 - 24		64 60	57	72	50		Overcast	Fair	NW		55	52				
22	T		9.30 11	- 20		64	61	72	40		Clear	very fine	NW		56	54		Little birds		
23	S		9.30 11	- 26 - 20		64 63	60	80	43		Clear cumuli	Very fine	W		63	57				
24	M		9.30 11	- 11 - 13		66 63	63	79	46		Overcast	Very fine	N		59	56				
25	T		9.30 11	- 22 - 24		65 64	69	72	43		Clear Cirro-cumuli	very fine	E		65	59		Little birds		
26	W		9.30 11	- 70 -		66 64	73	81	40		Clear very fine	very fine	SE		69	50				
27	T		9.30 11	- 14 -		64 62	64	78	40		Overcast	Fine	N		59	56				
28	F		9.30 11	- 60 -		60 64	66	80	50		Overcast	Fair	NE		61	50				
29	T		9.30 11	- 66 61		65 63	65	76	35		Clear Cirro-cumuli	Very fine	N		62	56		White frost		
30	S		9.30 11	- 43 - 25		66 65	74	84	43		Clear cumuli	very fine	SE		66	60				

1867 July	Days of the week	Thermometer into Noonage	Hour of observation	Barometer	Mean of the Barometer	Thermometer in the shade	Thermometer at hour of observation	Highest	Lowest	Mean Temperature	Mean Dew point	Modification of the Clouds	General appearance of the weather	Direction of the Wind	Rain	Day	Wet	Mo. & Vapors & Fog	Miscellaneous Observations	Observations relating to Animals	Observations relating to Plants
1	M		9.30 11	30.8 - 2		64 66	76	91	45			Clear Cumuli	Very fine	SW		71	63				
2	T		9.30 11	29.98 90		68 67	87	90	56			Overcast	Fine	SW	25	65	63		Rain in the morning		
3	W		9.30 11	- 98 30.10		68 67	67	70	56			Overcast	Fine	SW		64	62				
4	T		9.30 11	- 14 8		68 67	64	77	56			Overcast	Fine	SW	6	62	60				
5	F		9.30 11	- 4 18		68 66	65	76	56			Clear Cumuli	very fine	SW		62	60				
6	T		9.30 11	- 28 33		67 65	66	72	41			Clear Cumuli	Very fine	SW		54	61		Little webs		
7	S		9.30 11	- 32 40		66 65	68	70	50			Clear Cumuli	Very fine	SW		64	68		Finey Turkey		
8	M		9.30 11	- 42 44		67 65	71	77	45			Clear Cumuli	very fine	SE		64	59	34	Little webs		
9	T		9.30 11	- 43 44		67 65	68	82	44			Clear Cumuli	very fine	SE		64	60		Little webs		
10	W		9.30 11	- 40 40		67 60	78	83	43			Clear	Very fine	E		66	60		Little webs		
11	T		9.30 11	- 34 30		68 66	74	89	43			Clear Cumuli	very fine	SE		67	62		Little webs		
12	F		9.30 11	- 20 5		69 67	73	91	51			Overcast	Fine	S		67	61		Little webs		
13	T		9.30 11	- 94		69 67	67	89	49			Overcast	Spitting	S		63	60				
14	S		9.30 11	- 94 90		68 67	70	80	64			Clear Cumuli	very fine	SW		66	57		Thunder lightning after noon		

1867 July	Days of the Week	Time of sunrise to moonage	Hour of observations	Barometer	Mean of the Barometer	Thermometer in the shade	Thermometer at noon	Thermometer observation	Highest	Lowest	Mean temperature	Modification of the Clouds	General appearance of the weather	Direction of the Wind	Rain	Dry	Wet	No. of days in the month	Miscellaneous observations	Observations relating to animals	Observations relating to plants
15	M		9.30 - 11	29.98 - 75		69 65	60	75	50	5		Overcast	Rain	S	26	59	58	28			
16	T		9.30 - 11	60 - 73		65 65	63	67	54			Overcast	Fair	W	37	62	57				
17	W		9.30 - 11	73 - 83		65 64	63	68	51			Clear Cumuli	Fair	W	64	62	56		High wind		
18	T		9.30 - 11	95 - 80		65 64	60	71	55			Overcast	Fine	SW	30	60	59				
19	F		9.30 - 11	74 - 78		65 64	63	71	49			Clear Cumuli	Fine	SW	5	62	66				
20	J		9.30 - 11	93 - 99		66 65	65	69	50			Clear Cumuli	Very fine	W		62	65				
21	S		9.30 - 11	90 - 87		65 65	72	72	57			Clear Cumuli	Very fine	W		69	63				
22	M		9.30 - 11	84 - 85		67 66		76	53			Overcast Rain	Fine	SW	7	64	63	1.49			
23	T		9.30 - 11	88 - 84		68 66	64	76	53			Clear Cumuli	Thunders	SW	70	64	60				
24	W		9.30 - 11	80 - 84		67 66	64	75	50			Clear Cumuli	Very fine	W	5	64	67				
25	T		9.30 - 11	90 - 94		65 65	70	72	41			Clear Cumuli	Very fine	SW		65	63				
26	F		9.30 - 11	88 - 80		64 62	57	78	52			Overcast	Rain	NE	1.68	53	55				
27	J		9.30 - 11	30.2 - 13		53 61	56	57	46			Clear Cumuli	Fine	SW	46	55	50				
28	S		9.30 - 11	13 - 24		62 61	61	65	41			Clear Cumuli	Very fine	W		59	53				
29	M		9.30 - 11	20 - 24		62 62	60	77	42			Clear Cumuli	Very fine	W		57	53	2.31			
30	T		9.30 - 11	22 - 18		63 61	62	74	40			Clear Cumuli	Very fine	W		57	64		Little webs		
31	W		9.30 - 11	16 - 18		62 60	70	75	43			Clear	Very fine Sunny	SE		65	61		Little webs		

31
4.29

August 1867	Days of the week	Surveys sets	Hour of observations	Barometer	Mean of the Barometer	Thermometer in the shade	Thermometer in the sun	Highest	Lowest	Mean Temperature	Modification of the Clouds	General Appearance of the Weather	Direction of the Wind	Rain	Sun	Wind	Wet by Gauge	Miscellaneous Observations	Observations relating to Animal	Observations relating to Plants.
1	T		9.30 11	30.6 - 10		62 60	59	81	44		Overcast	Fair	E		52	49				
2	F		9.30	- - - 14		63 61	57	60	45		Overcast	Fair	NW		62	65				
3	T		9.30 11	- 16 - 20		60 60	67	67	40		Clear Cirrocumuli	Very fine	NE		63	50				
4	S		9.30 11	- 29 - 37		60 62	74	70	40		Clear Cumuli	Very fine	SW		60	59				
5	M		9.30	- 20 - 17		64 64	72	76	47		Clear Cirro Cumuli	very fine	NE					Went to London		
6	T												W	71	60	50				
7	W		9.30 11	29.90 - 94		64 63	61	77	46		Overcast	Rain	W	27	64	60				
8	T		9.30 11	30.90 29.88		65 64	66	67	52		Clear Cumuli	Fair	W	11	64	50				
9	F		9.30 11	- 93 - 98		66 65	66	74	55		Clear Cumuli	Fine	SW		65	60		Little rabbits		
10	T		9.30 11	30.20 - 31		66 61	69	78	41		Clear Cumuli	Very fine	W		69	65				
11	S		9.30 11	30.10 - 27		68 68	68	78	46		Clear Cumuli	Fine	W		72	65	59			
12	M		9.30 11	- 28 - 26		68 67	75	85	57		Clear Cumuli	Very fine	S		77	72				
13	T		9.30 11	- 24 - 22		70 70	81	87	54		Clear	Very fine	SW		74	69				
14	W		9.30 11	- 14 - 18		72 72	80	93	61		Clear Cumuli	very fine								

August 1867	Days of the week	Turn rises sets	Message	Hour of day	Barometer	Mean of Barometer	Thermometer in the shade	Thermometer at hour of day	Highest	Lowest	Mean Temperature	Modification of the clouds	General appearance of the weather	Direction of the Wind	Rain	Dry	Wet	Mr. Gaby's Gauge	Miscellaneous Observations	Observations relating to Animals	Observations relating to Plants
15	T			9.30 11	29.80 - 86		79 60	64	69	54		Clear Cumuli	Very fine	W	16	66	67				
16	F			9.30 11	30.4 29.95		75 71	64	94	60		Overcast	Rain Fair	SE	42	64	62		Thunder lightning		
17	T			9.30 11	30.1 - 5		68 67	69	72	52		Overcast	Fair	SW		66	61				
18	S			9.30 11	- 8 - 20		69 68	69	75	59		Overcast	Fair	SW		66	63				
19	M			9.30 11	30.20 - 22		68 69	77	70	56		Clear	Very fine	SE		71	68	62	Thunder lightning evening		
20	T			9.30 11	- 16 - 5		71 69	65	83	61		Overcast	Fair	SW	50	65	62		Thunder lightning		
21	W			9.30 11	- 10 - 16		69 68	69	74	53		Clear Cumuli	Very fine	W		65	61				
22	T			9.30 11	- 19 - 20		68 66	66	76	57		Clear Cumuli	very fine	NW		63	58		Little webs heavy dew		
23	F			9.30 11	- 20 - 20		68 67	72	80	45		Clear Cumuli	very fine	SW		68	60		Little webs		
24	T			9.30 11	- 20 - 22		67 67	70	84	57		Clear Cumuli	very fine	SW		66	62				
25	S			9.30 11	- 23 - 20		69 67	68	81	64		Clear Cumuli	very fine	SW		66	62				
26	M			9.30 11	- 20 - 14		68 68	68	80	56		Overcast	Fair	SW		65	63	51			
27	T			9.30 11	- 12 - 18		66 64	61	74	45		Curro cumuli	Very fine	SW	12	59	58	55	Little webs		
28	W			9.30 11	- 27		65 64	65	72	43		Clear Curro cumuli	Very fine	W		61	56		Little webs		
29	T			9.30 11	- 32 34		65 65	70	72	58		Overcast	Fair	W		66	63				
30	F			9.30 11								Clear Cumuli	Fine						Went to London.		
31	T			9.30 11	30.32 - 8		68 67	80	81	55		Clear Cumuli	very fine	SW		71	64				

1.09

2.29

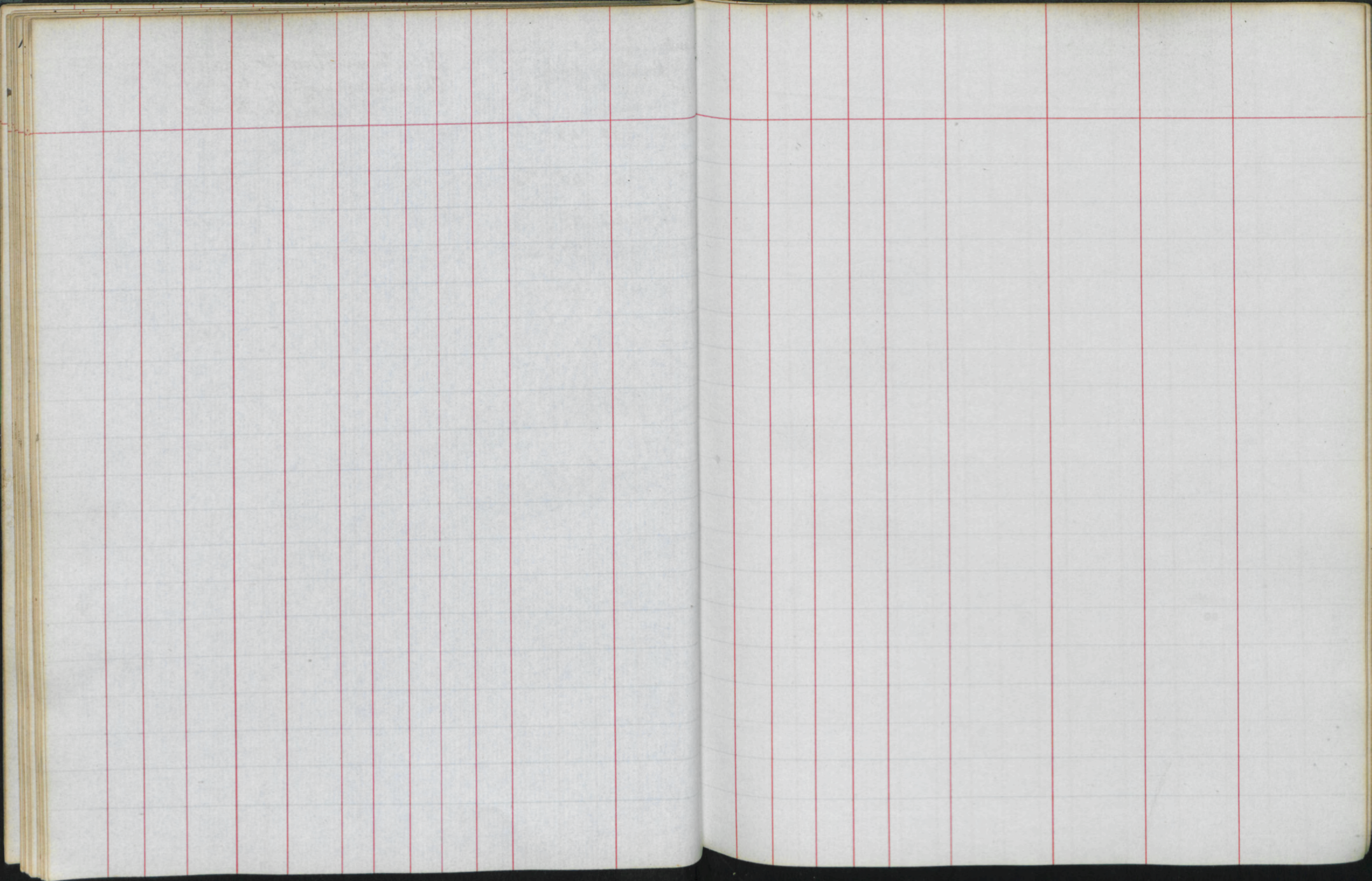
September 1867	Days of the week	Sun rises sets Noon day	Hour of Observation	Barometer	Mean of the Barometer	Thermometer in the vestibule	Thermometer at low observation	Highest	Lowest	Mean Temperature	Modification of the Clouds	General Appearance of the Weather	Direction of the Wind	Rain	Dry	Wet	No. of days gauge	Miscellaneous Observations	Observations relating to Animals	Observations relating to Plants
1	S		9.30 11	30.1 - 2		68 69	75	90	55		Clear Cumuli very fine	SW		70	66			Little webs		
2	M		9.30 11	- 12 - 24		70 68	74	81	50		Clear very fine	SW		68	64			Little webs		
3	T		9.30 11	- 9 - 8		71 70	73	86	60		overcast Fair	SW		65	60					
4	W		9.30 11	- 5 - 1		70 68	71	78	58		Clear Cumuli Fine	SW		66	63					
5	T																			
6	Th		4.30 11	- 2 29.98		66 65	65	74	52		Clear Cumuli Fine	SW	17	62	58					
7	T		9.30 11	29.98 30.7		65 65	65	71	53		Clear Cumuli Very fine	SW	4	63	57			High wind		
8	S		9.30 11	- 20 - 22		66 65	69	72	48		Clear Cumuli Very fine	SW		65	59			Little webs		
9	M		9.30 11	- 8 - 6		66 65	66	75	54		Clear Cumuli Very fine	W		63	58					
10	T		9.30 11	- 14 - 10		69 66	65	73	45		Overcast Fair	SW	45	62	60					
11	W		9.30 11	- 10 - 14		66 65	67	76	47		Overcast Fair	SW	4	63	61					
12	T		9.30 11	- 1 29.94		65 65	68	71	56		Clear Cumuli very fine	SW	18	66	63					
13	Th		9.30 11	30.2 - 8		64 60	66	75	51		Clear Cumuli very fine	W		60	57					
14	T		9.30 11	- 10 - 14		68 67	64	72	48		Clear Cumuli Very fine	SW		63	58					
15	S		9.30 11	- 12 - 15		65 64	63	71	50		Clear Cumuli Fine	SW	6	64	60					

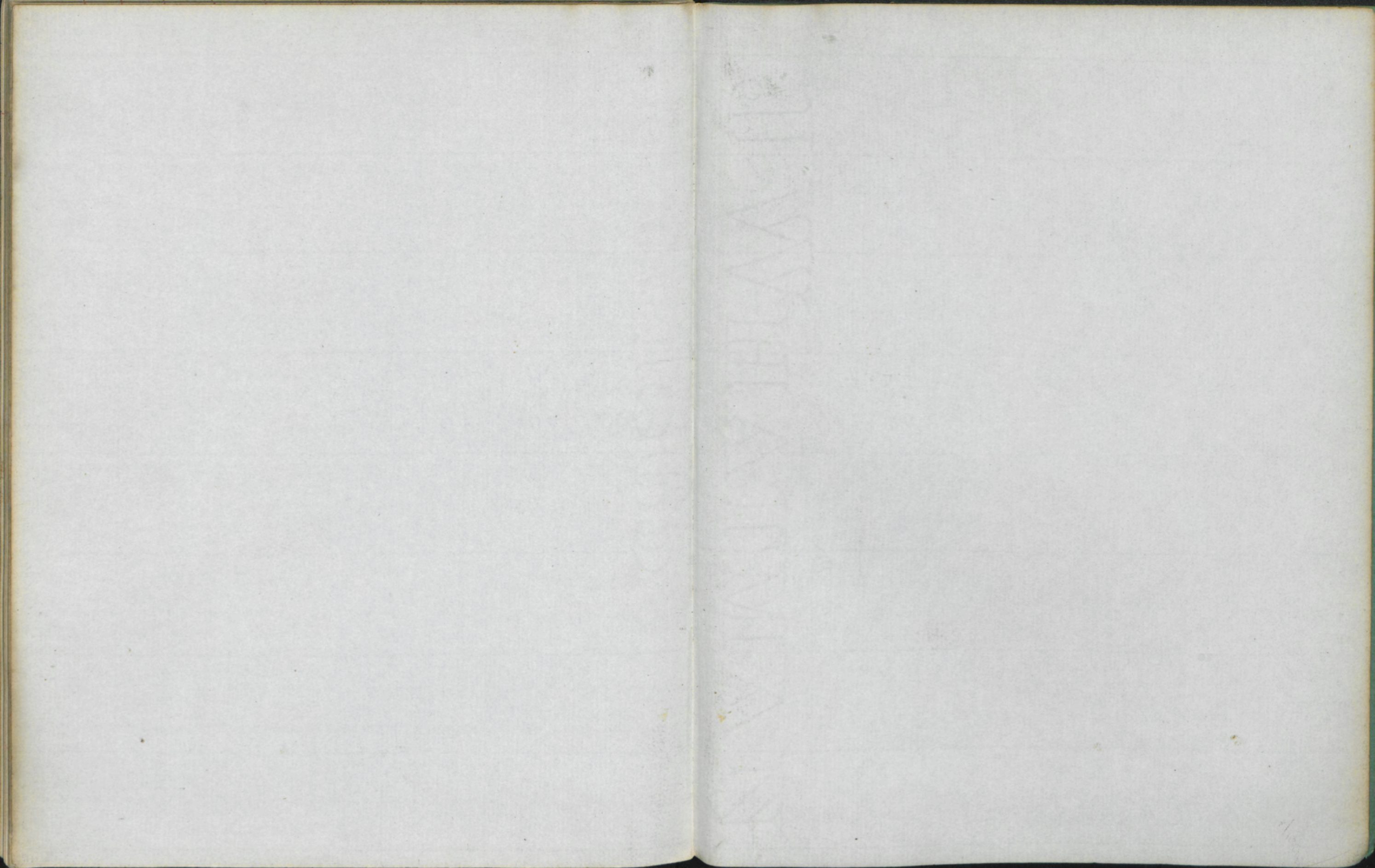
1864	Day of the week	Sun rises sets	Hours of observation	Barometer	Mean of the Barometer	Thermometer in the vestibule	Thermometer at hour of observation	Highest	Lowest	Mean Temperature	Modification of the Clouds	General appearance of the weather	Direction of the Wind	Rain	Dew	Wet	Wet by gauge	Miscellaneous Observations	Observations relating to Animals	Observations relating to plants
16	M		9.30 11	30.30 -31		64 61	58	70	41		Clear. Cumuli	Very fine	W		58	52				
17	T		9.30 11	30.32 -48		60 59	59	65	48		Clear Cumuli	very fine	NE		54	50				
18	W		9.30 11	-45 -47		61 60	60	64	46		Overcast	Fair	NE	.3	58	56				
19	T		9.30 11	-42 -33		61 60	60	67	46		Overcast	Foggy Fair	SE		60	65		Heavy dew		
20	F		9.30 11	-32 -31		61 60	55	69	40		Overcast	Fine	N		52	50				
21	J		9.30 11	-30 -28		62 61	63	73	47		Overcast	Foggy Fair	NE		55	52				
22	S		9.30 11	-32 -28		61 60	61	66	50		Overcast Rain	Fair	SW	16	60	58		Foggy Sun set		
23	M		9.30 11	-14 -10		61 60	56	65	44		Overcast	Fair	SW	8	52	50		Foggy Sun set.		
24	T		9.30 11	-12 -20		63 58	54	67	45		Clear Cumuli	Very fine	NW		56	50				
25	W		9.30 11	-53 -60		66 60	55	66	32		Overcast	Fine	N		52	49		White Frost		
26	T		9.30 11	-38 -60		57 56	55	63	35		Clear	Very fine	E		50	49		White frost Little webs		
27	F		9.30 11	-28 -30		59 58	67	61	46		Clear Cumuli very fine	Very fine	W		68	64				
28	J		9.30 11	-44 -38		60 59	63	67	46		Clear Cumuli	Very fine	NW		60	55				
29	S		9.30 11	-40 -38		60 60	63	66	48		Overcast	Fair	NW		58	56				
30	M		9.30 11	-32 25		62 63	63	65	51		Clear Cumuli	Fine	W		60	55				

94

121

[illegible]





1066. Cobham Lodge

Cobham Surrey

Rain fall for first week
of September into a gauge
of 5 inches diameter
Howards Gauge.

Monday Sept 3.	-	50
T - 4	-	4
W - 5	-	10
T - 6	-	7
F - 7	-	23
S - 8	-	16
S		

Mr Symons told me the
flow of my Library was
100 feet above the level of
the Thames at London Bridge
having ascertained by his
Instrument

